



**ALL0281 IEEE 802.11b/g
Wireless PCI Adapter**

Quick Installation Guide



Contents of Package:

- 2.4 GHz IEEE 802.11b/g Wireless PCI Adapter
- Manual and Drivers/Utility on CD

Note: If any of the above items are missing, please contact your reseller.

System Requirements:

A computer with an available 32-bit PCI slot

Windows XP, Windows 2000, Windows ME, or Windows 98SE

At least 32 MB of memory and a 300 MHz processor or higher

An 802.11g Access Point, or an 802.11g wireless adapter.

Introduction

The **802.11b/g Wireless PCI Adapter** is an advanced IEEE 802.11b/g compatible, high performance, wireless card that supports data transfer speeds of up to 54 Mbps in **802.11g** mode and 108 Mbps.

The **802.11b/g Wireless PCI Adapter** comes with software drivers for the most popular Microsoft Windows operating systems and can be integrated into a larger network, running Windows XP, Windows 2000, Windows ME, Windows 98SE, in **Infrastructure mode** (with an Access Point).

This manual provides a quick introduction to wireless technology and its application as it relates to networking. Take a moment to read through this manual and get acquainted with wireless technology.

Product Features

-
- Compatible with IEEE 802.11b standard to provide wireless Ethernet data rates of up to 11 Mbps data rate
- Compatible with IEEE 802.11g high rate standard to provide wireless 54 Mbps data rate
- Operation at 2.4 GHz frequency bands to meet worldwide regulations
- Dynamic data rate scaling at 1, 2, 5.5, and 11Mbps for IEEE 802.11b
- Dynamic data rate scaling at 6, 9, 12, 18, 24, 36, 48, 54 and 108 Mbps for IEEE 802.11g
- Maximum reliability, throughput and connectivity with automatic data rate switching
- Supports wireless data encryption with 64/128/152-bit WEP for security
- Supports infrastructure networks via Access Point
- Provides an extended omni-directional antenna with 2 dBi
- Supports DFS/TPC for European operation
- Supports PCI Local Bus 2.2 standard
- User-friendly configuration and diagnostic utilities

- Driver support for Windows 98SE, ME, 2000, and XP

LEDS

LED stands for Light-Emitting Diode. 802.11b/g Wireless PCI Adapter has two **LEDs**: **POWER** and **ACTIVITY**.

LED	LED Activity
Power	A steady light indicates a connection to a power source
Activity	A solid light indicates that the 802.11b/g Wireless PCI Adapter is in a ready state

Installation

This section shows you how to install the Utility if you are using the operating systems Windows 2000, ME, 98SE. Follow the instructions given below on how to install the hardware (**802.11b/g Wireless PCI Adapter**) and then the software (driver and utility). For those using Windows XP, the installation procedure will be the same until the utility installation. Windows XP has a built in utility for wireless devices. The configuration utility does not need to be installed for users using the XP operating system.

***Note:** Some screens may vary within different versions (XP, 2000, ME, 98SE) of the Windows operating system during the installation process. Windows 2000 is used in this version.*

System Requirements:

- A computer with an available 32-bit PCI slot
- At least a 300 MHz processor and 32 MB of memory
- Adapter Controller properly installed and working
- An 802.11b/g Access Point (for Infrastructure Mode)

1. Installing 802.11b/g Wireless PCI Adapter

- Turn off the computer
- Insert the 802.11b/g Wireless PCI Adapter into an available 32-bit PCI slot in your computer
- Restart your computer

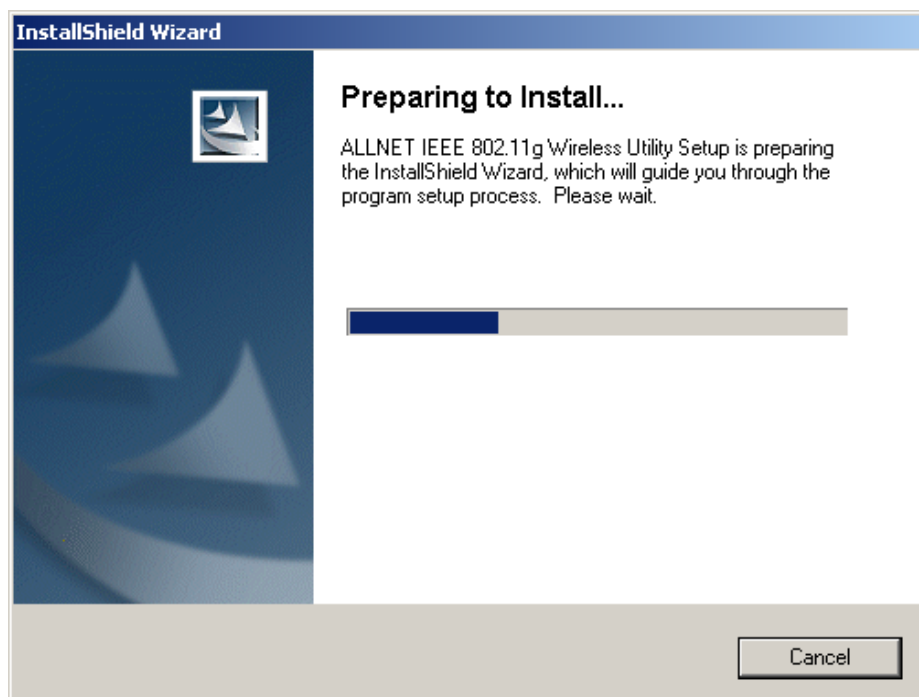
2. Installing the Configuration Utility

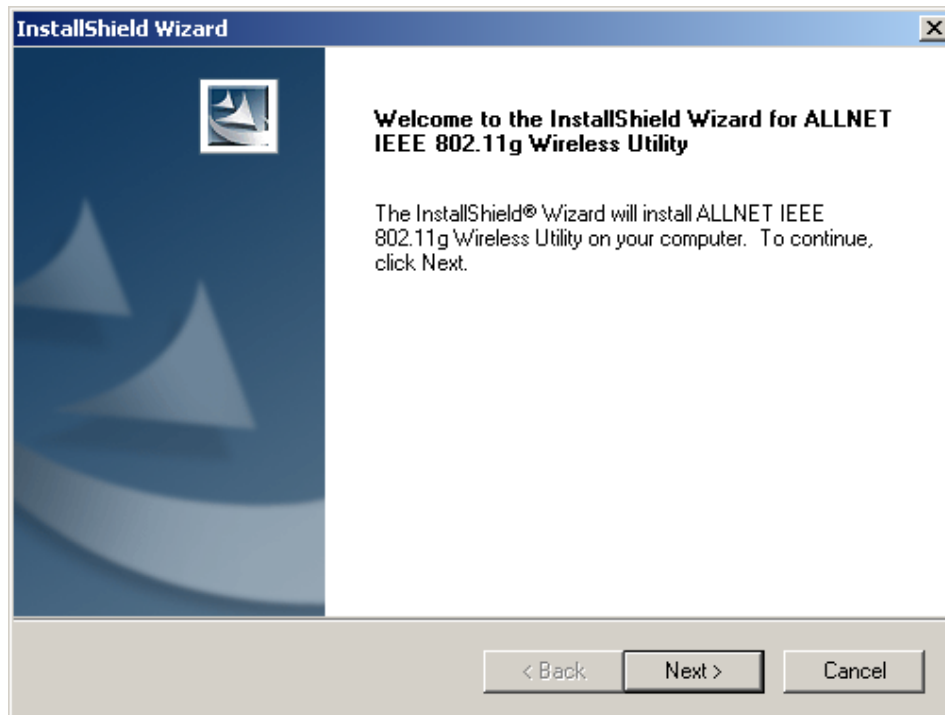
Look for the file named “Setup.exe” on the installation CD-ROM. Double-click on it to start the installation for the configuration utility.



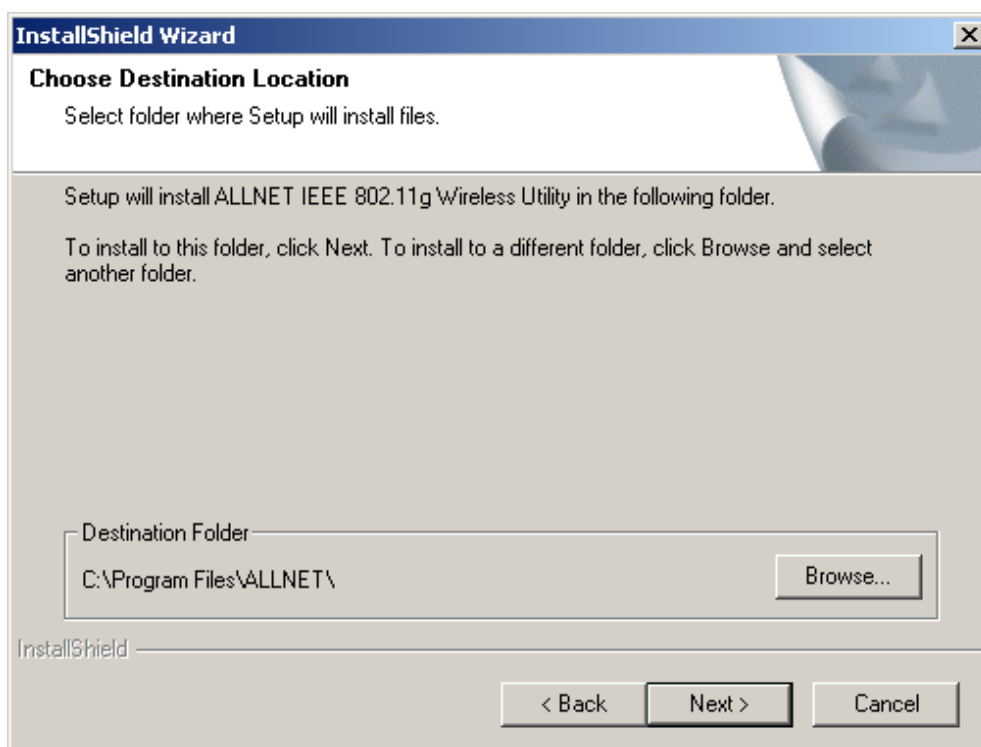
Setup.exe

- *This screen appears.*



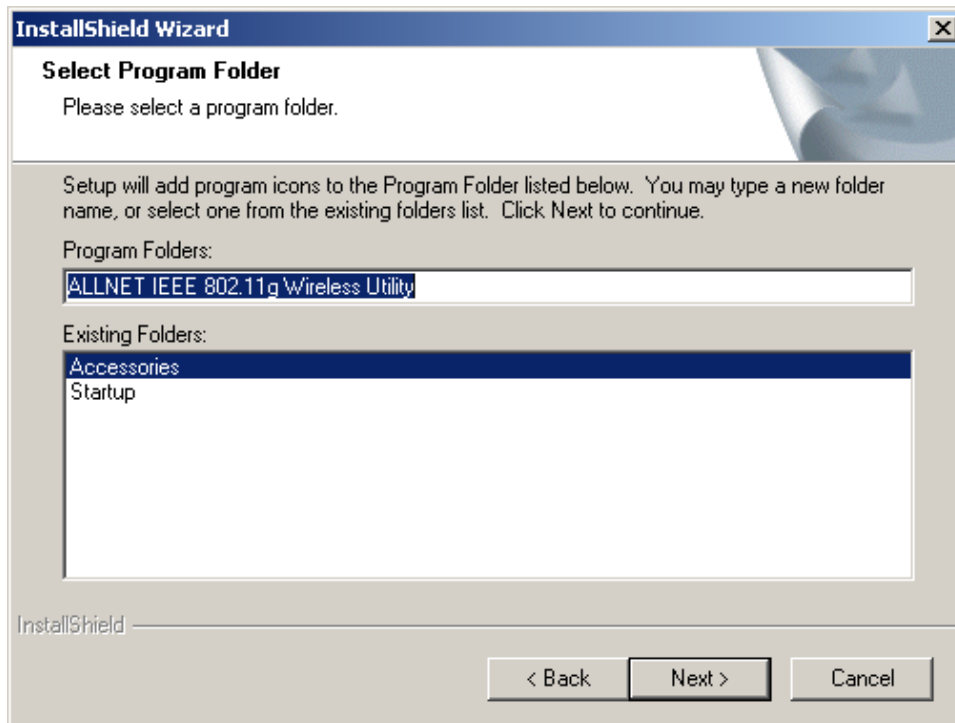


To install to the folder C:\Program Files\WLAN\ Utility click **Next**. Otherwise click on **Browse** to choose an alternate location.

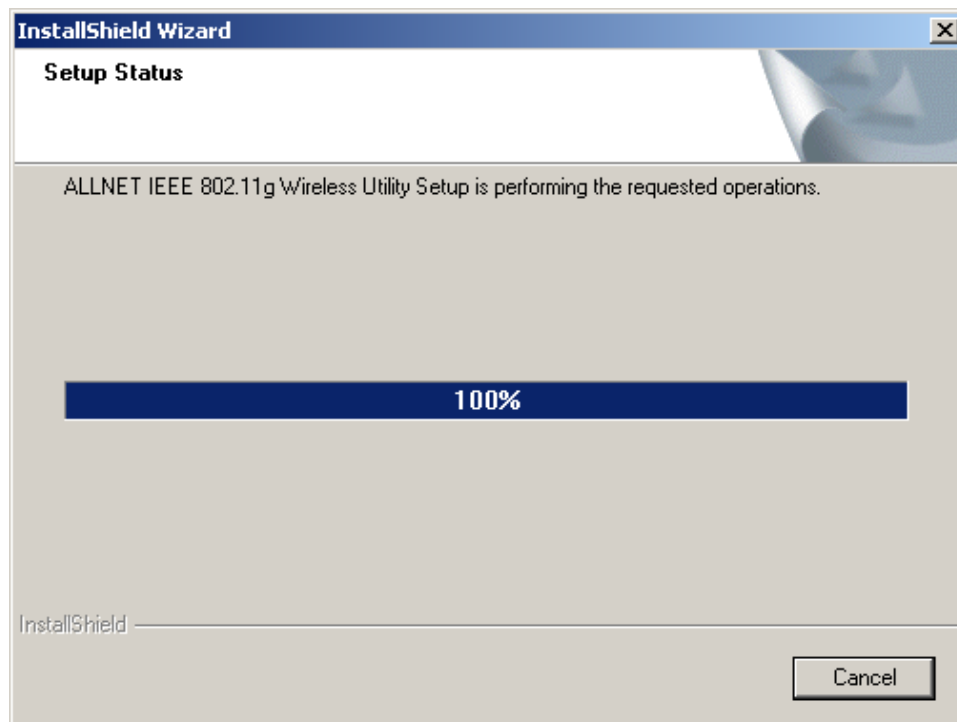


- Click **Next** to proceed with the utility installation.

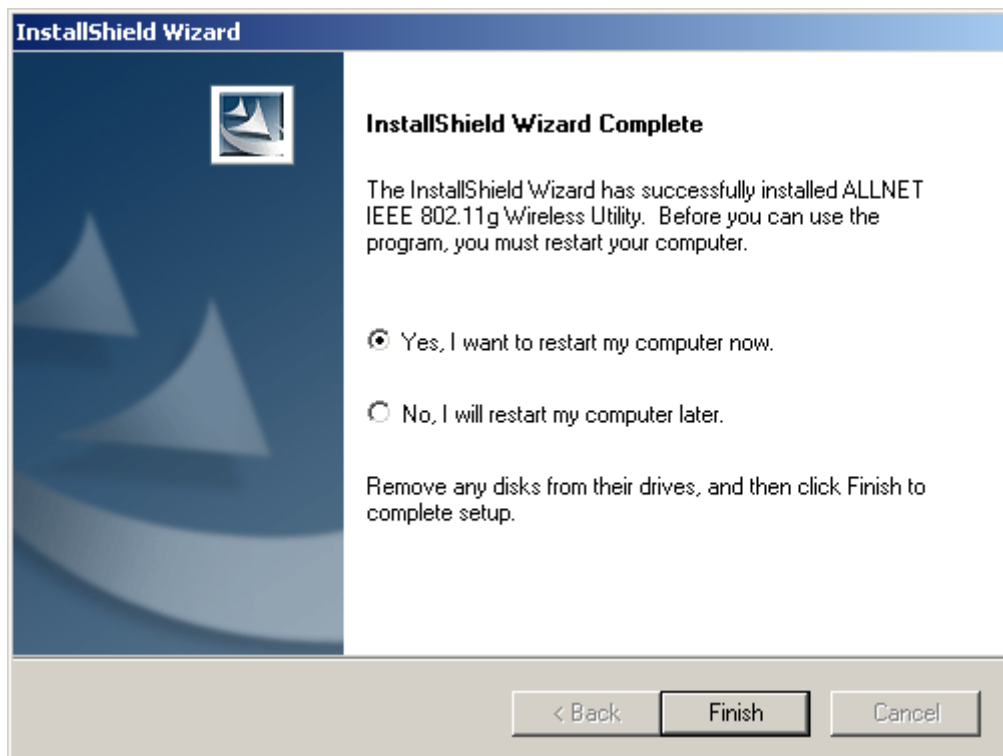
- The **Select Program Folder** will then appear. You may add a new folder you wish to contain a start up icon or choose one from the list provided. Click **Next** to proceed.



- The Setup Status screen will appear to inform you that the installation is in process, as seen below. This same screen will then alert you that all backup files have been removed.



- After WLAN Utility has been successfully installed, InstallShield Wizard will prompt you to restart your computer. Select “Yes, I want to restart my computer now,” and click on ***Finish***.



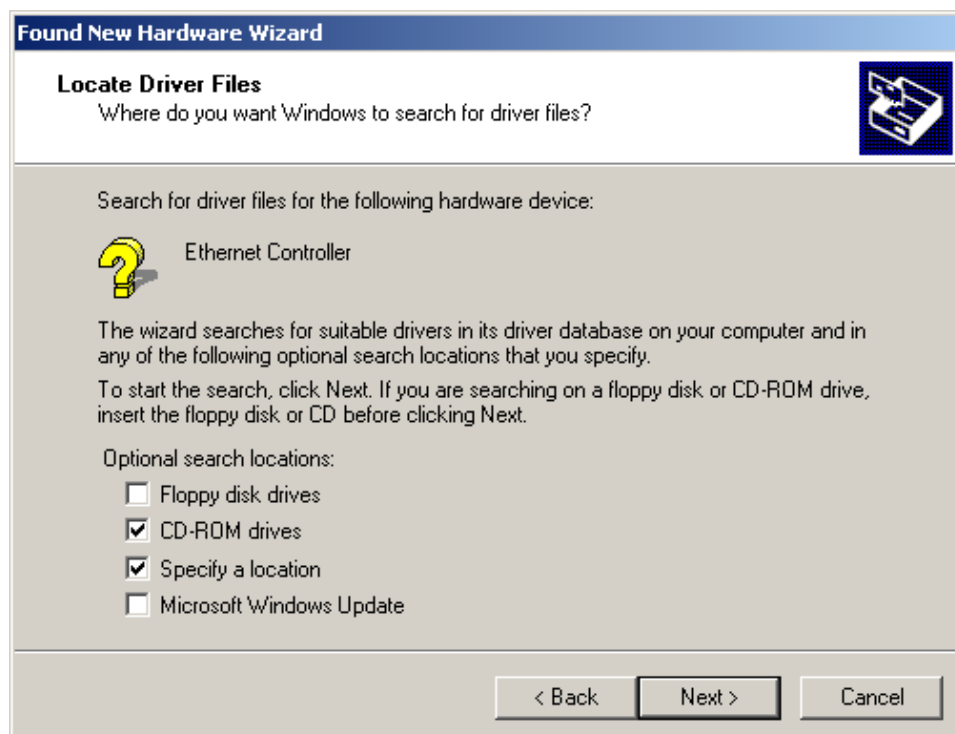
3. *Installing the Driver*

Installing the software involves two steps. The first is to install the driver and the second is to install the Configuration Utility.

- When the 802.11b/g Wireless PCI Adapter has been inserted into a PCI slot, the **Found New Hardware** screen appears.

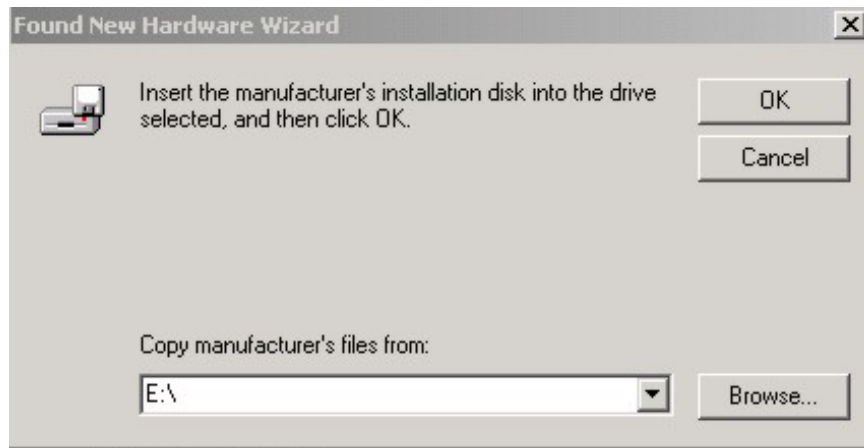


- Continue with the installation and the screen below should appear. Click on **Yes** to proceed with the installation.



Note: This window may not appear.

- Insert the Driver CD into the CD-ROM drive. If you have not inserted the Driver CD into the CD-Rom a prompt such as the one below will appear. Click **OK**.



- Otherwise the installation will continue with the following screen and come to completion.

