

ALL0265A Konfiguration „AP+WDS“-Mode

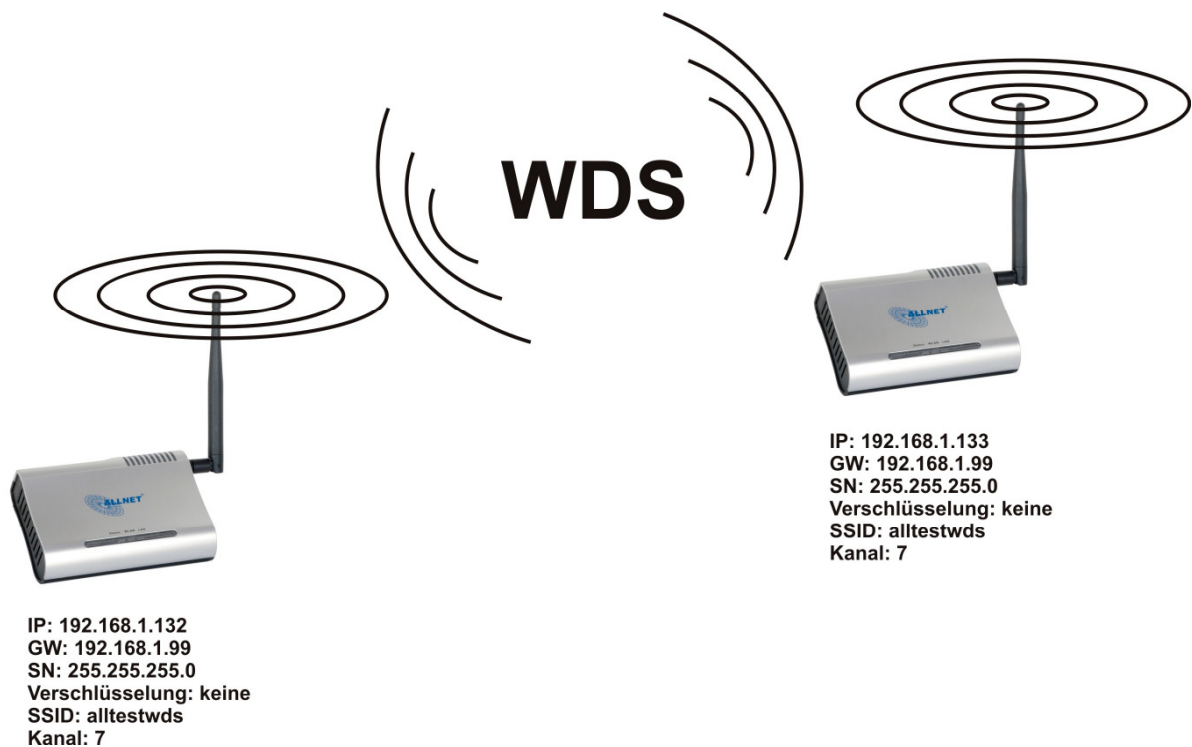
In der vorliegenden Musterkonfiguration wird die Verbindung von zwei ALL0265A über WDS beschrieben. Die Geräte stellen hierbei die Verbindung untereinander her; Clients können sich parallel auf dem Gerät einbuchen. Die Geräte werden somit im sogenannten „AP+WDS“-Mode betrieben.

Vorraussetzungen für den Betrieb über WDS

Um die Geräte wie oben beschrieben miteinander zu verbinden, müssen folgende grundlegende Regeln beachtet werden:

- Beide Geräte haben die selbe SSID
- Beide Geräte nutzen den selben Funkkanal
- Beide Geräte nutzen für WDS die selbe Verschlüsselung
- Beide Geräte haben unterschiedliche IP-Adressen im selben Subnetz

Testumgebung (grafische Darstellung)



Konfiguration der Accesspoints

Accesspoint #1

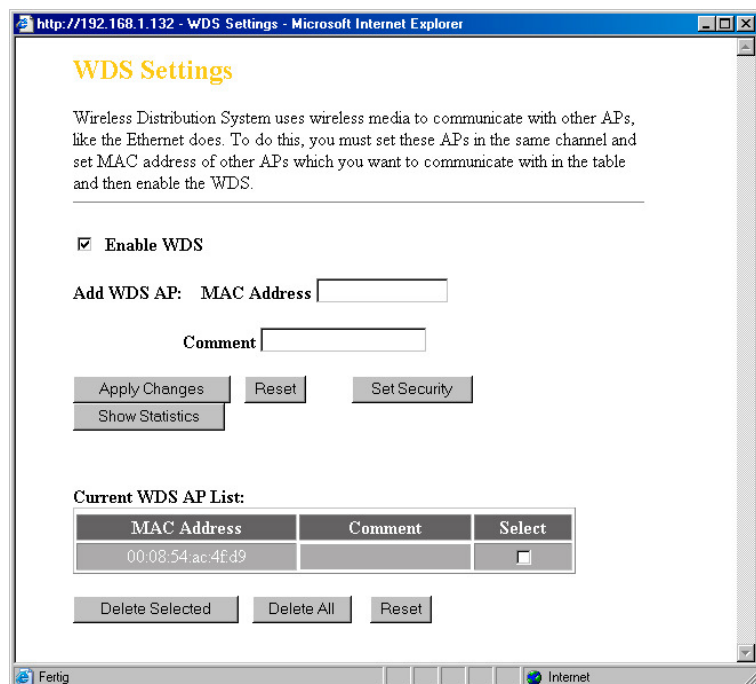
LAN-Einstellungen:

The screenshot shows the 'LAN Interface Setup' page in a Microsoft Internet Explorer browser. The browser's address bar shows 'http://192.168.1.132/home.asp'. The page title is '802.11g Wireless AP'. On the left, a 'Site contents' menu lists various options, with 'LAN Interface Setup' selected. The main content area is titled 'LAN Interface Setup' and contains a description: 'This page is used to configure the parameters for local area network which connects to the LAN port of your Access Point. Here you may change the setting for IP address, subnet mask, DHCP, etc..'. Below the description are several configuration fields: 'IP Address' (192.168.1.132), 'Subnet Mask' (255.255.255.0), 'Default Gateway' (192.168.1.99), 'DHCP Server' (Disabled), 'DHCP Client Range' (192.168.1.100 - 192.168.1.200) with a 'Show Client' button, 'DNS Server' (empty), 'Domain Name' (empty), '802.1d Spanning Tree' (Disabled), and 'Clone MAC Address' (000000000000). At the bottom of the form are 'Apply Changes' and 'Reset' buttons.

Basic Settings:

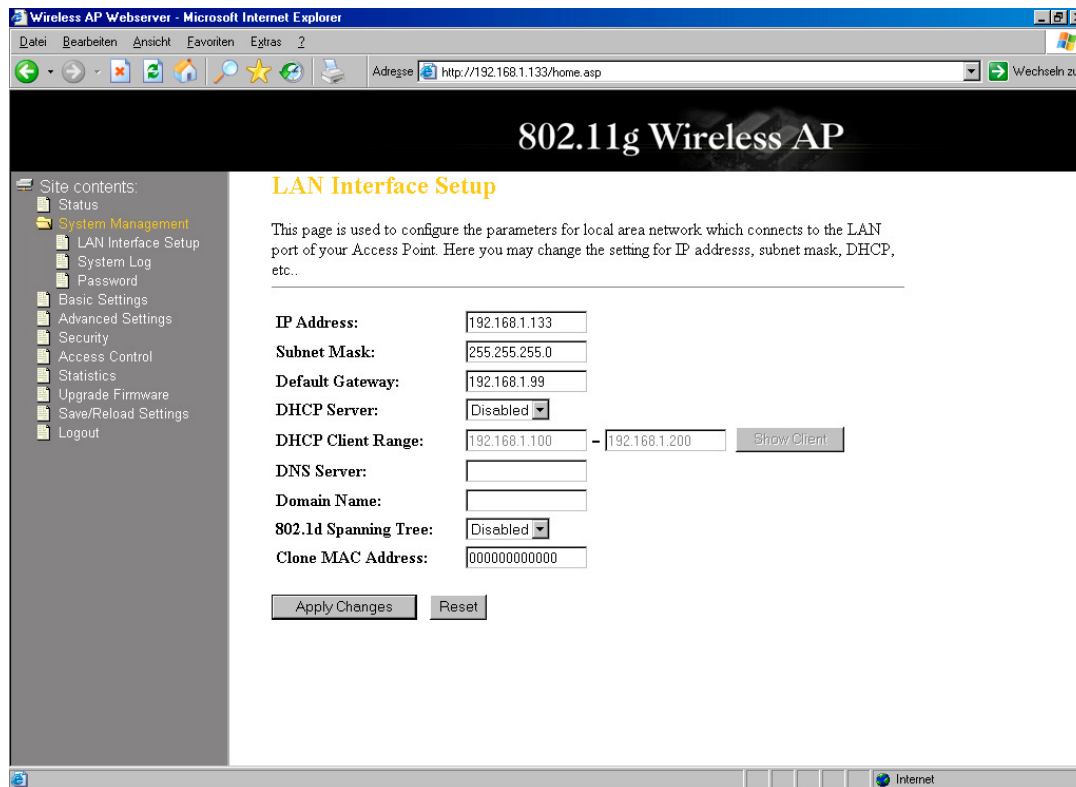
The screenshot shows the 'Wireless Basic Settings' page in a Microsoft Internet Explorer browser. The browser's address bar shows 'http://192.168.1.132/home.asp'. The page title is '802.11g Wireless AP'. On the left, a 'Site contents' menu lists various options, with 'Basic Settings' selected. The main content area is titled 'Wireless Basic Settings' and contains a description: 'This page is used to configure the parameters for wireless LAN clients which may connect to your Access Point. Here you may change wireless encryption settings as well as wireless network parameters.'. Below the description are several configuration fields: a checkbox for 'Disable Wireless LAN Interface' (unchecked), 'Band' (2.4 GHz (B+G)), 'AP Mode Type' (AP+WDS), 'SSID' (alltestwds), 'Country' (Europe(ETSI)), 'Channel Number' (7), 'Associated Clients' (Show Active Clients button), 'WDS Setting' (Show WDS Setting button), a checkbox for 'Enable Universal Repeater Mode (Acting as AP and client simultaneously)' (unchecked), and 'Root AP SSID' (empty). At the bottom of the form are 'Apply Changes' and 'Reset' buttons.

WDS-Setting:

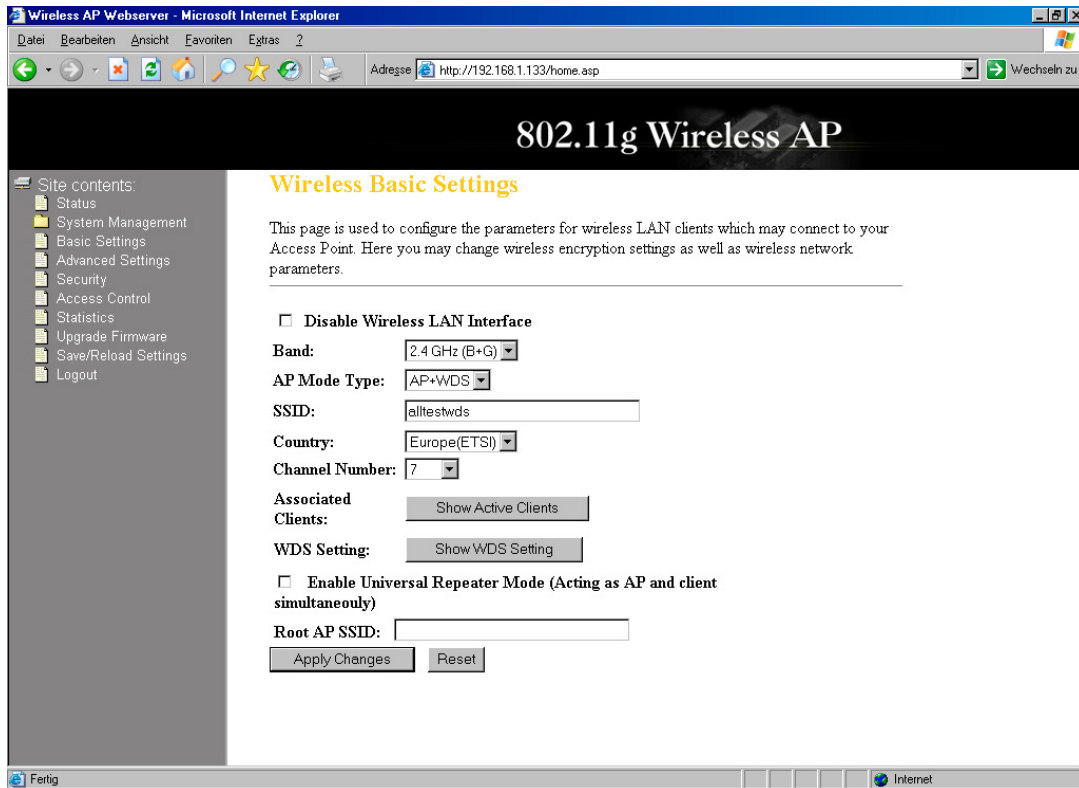


Accesspoint #2

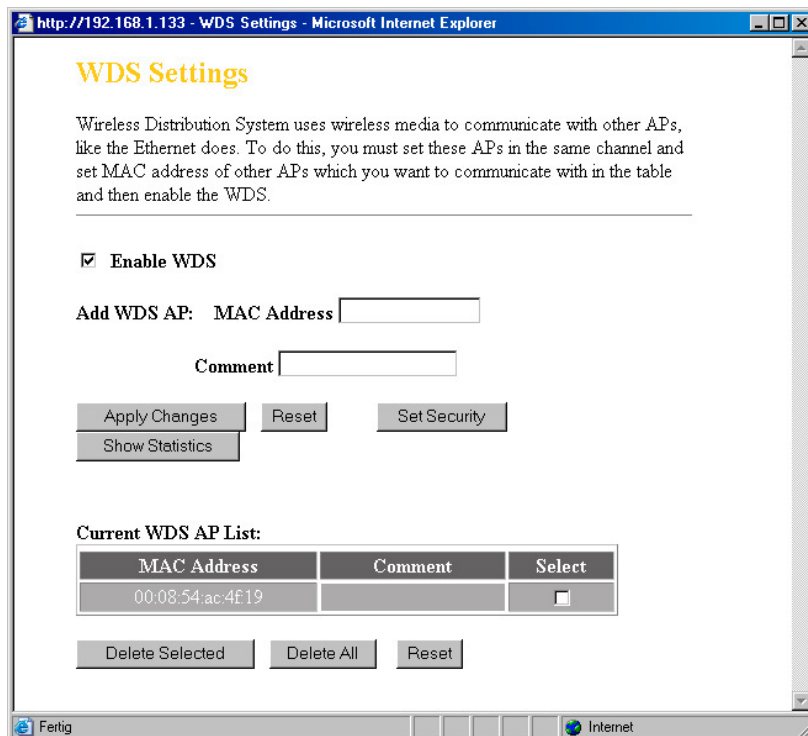
LAN-Einstellungen:



Basic Settings:



WDS-Setting:



Überprüfen der Verbindung

Sofern die WDS-Verbindung hergestellt wurde, können sie das über den Button „Show Statistics“ überprüfen. Hier werden ihnen die Informationen zu den übertragenen Paketen und zur aktuellen Verbindungsgeschwindigkeit zwischen den beiden Accesspoints angezeigt.

WDS AP Table

This table shows the MAC address, transmission, reception packet counters and state information for each configured WDS AP.

MAC Address	Tx Packets	Tx Errors	Rx Packets	Tx Rate (Mbps)
00:08:54:ac:4f:d9	1456	71	11326	54

Refresh Close

Fertig Internet