

VS201 Video Server Quick Guide

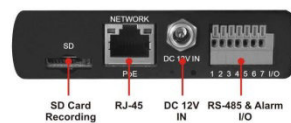
This Quick Guide is for quick installing and connecting the Video Server. For details, please refer to the Video Server's User Manual.

Video Server's Connectors

Front Panel



Rear Panel



Connector	Pin No.	Definition	Remarks
Power Output (DC 12V)	-	Power	Power Connection
Line Out	-	Audio Output	
MIC IN/ LINE IN	-	Audio Input and Microphone Input	
BNC Output	-	Analog Video Output to Monitor	
BNC Input	-	Analog Video Input to Video Server	
SD Card Socket	-	Micro SD Card Inserting Slot	
RJ-45	-	10/100 Mbps Ethernet/ PoE	
DC 12V IN	-	Power Input	
RS-485	1	D+	Alarm connection
	2	D-	
	3	GND	
	4	GND	
Alarm I/O	5	IN+	
	6	OUT-	
	7	OUT+	

Network Installation

Please follow the instructions below to complete network installation.

Ethernet Cable Connection

Connect one end of the CAT5 Ethernet cable to the RJ-45 connector of the video server, and the other end of the cable to the network switch or PC.



NOTE: In some cases, you may need to use an Ethernet crossover cable when connecting the video server directly to the PC.



NOTE: Check the status of the link indicator and activity indicator LEDs; if the LEDs are unlit, please check LAN connection.



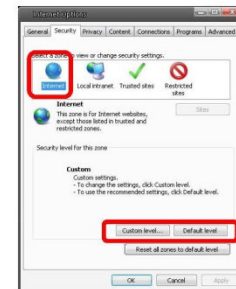
Green Link Light indicates good network connection.

Orange Activity Light flashes for network activity indication.

Before Login to the Camera

A client program will be automatically installed on your PC when connecting to the Camera. Before login to the Camera, please ensure downloading the ActiveX control is allowed by either changing the ActiveX controls and plug-ins or setting Internet's security level to default. For further details, please refer to the Video Server's user manual.

ActiveX Controls and Plug-ins Settings	Internet Security Level
Step 1: Start the Internet Explorer (IE). Step 2: Select <Tools> from the main menu of the browser. Then Click <Internet Options>. Step 3: Click the <Security> tab and select "Internet", and click <Custom level> to change ActiveX settings. Step 4: Set "ActiveX controls and plug-ins" items to <Prompt> or <Enable>.	Step 1: Start the IE. Step 2: Select <Tools> from the main menu of the browser. Then Click <Internet Options>. Step 3: Click the <Security> tab and select "Internet." Step 4: Down the page, press "Default Level" and click "OK" to confirm the setting. Close the browser window, and open a new one later for accessing the Camera



Camera Login

The Camera's default IP address is: **192.168.0.250**. Therefore, to access the Camera for the first time, set the PC's IP address as: 192.168.0.XXX; for example:

IP Address: 192.168.0.100

Subnet Mask: 255.255.255.0

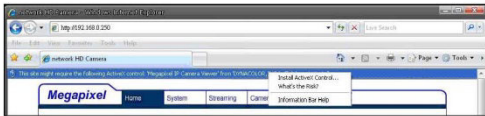
Login ID & Password

- Key in the Camera's IP address in the URL bar of the Web browser window and press "Enter."
- Enter the default user name (**Admin**) and password (**1234**) in the prompt request dialogue. Please note that user name is case sensitive.

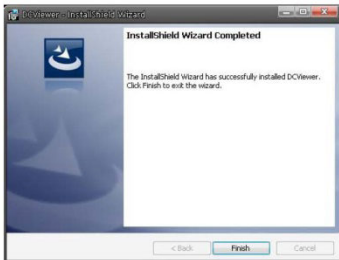
NOTE: If your device has the firmware version a20130430ANS or higher, the login data would be user name (**admin**) and password (**admin**)

Install the ActiveX control

- After connecting the Video Server to the Camera, the request for installing the ActiveX control will appear just below the URL bar.
- Right Click on the information bar, and press "Install ActiveX Control..." to permit ActiveX control installation.



- In the pop-up security warning window, click "Install" to start downloading DC Viewer software on the PC.
- Press "Finish" after DC Viewer installation is complete.



VS201 Video Server Quick Guide

Ver1.1

Browser-based Viewer

The main page of the Camera user interface is as shown below. Please note that the function buttons will vary depending on the camera model.

