

USB V.90 Fax/Modem

User Manual



FCC REGULATORY STATEMENTS

FCC Certification

USB 56K Fax/Modem

FCC ID: MQ4USM560

Made in Taiwan

The United States Federal Communication Commission (FCC) and the Canadian Department of Communications have established certain rules governing the use of modems and other electronic equipment.

FCC Part 68 Registration

This high speed USB 56K FAX/MODEM complies with FCC Part 68 rules, and the use of this modem is subject to the following restrictions:

1. The FCC has established rules which permit this device to be directly connected to the telephone network. Standardized jacks are used for these connections. This equipment should not be used on party lines or coin phones.
2. If this device is malfunctioning, it may also be causing harm to the telephone network; this device should be disconnected until the source of the problem can be determined and until repair has been made. If this is not done, the telephone company may temporarily disconnect service.
3. The telephone company may make changes in its facilities, equipment, operation and procedures; if such changes affect the compatibility or use of this device, the telephone company is required to give adequate notice of the situation with the FCC.
4. If the telephone company requests information on what equipment:
 - a. The telephone number to which this unit is connected.
 - b. The Ringer Equivalence Number (REN).
 - c. The USOC jack required.
 - d. The FCC Registration number.

Items (b) and (d) are indicated on the label. The Ringer Equivalence Number (REN) is used to determine how many devices can be connected to your telephone line. In most areas, the sum of the REN's of all the devices on any one line

should not exceed 5.0. If too many devices are attached, they may not ring properly.

FCC Part 15 Registration

This device complies with Part 15 of FCC rules. Operation is subject to the following two conditions:

- 1) This device may not cause harmful interface, and
- 2) This device must accept any interface received, including interface that may cause undesired operation.

This equipment has been tested and found to comply with the limits for a Class B digital device, pursuant to Part 15 of the FCC Rules. These limits are designed to provide reasonable protection against harmful interference in a residential installation. This equipment generates, uses and can radiate radio frequency energy, and if not installed and used in accordance with the instructions, may cause harmful interference to radio communications. However, there is no guarantee that interference will not occur in a particular installation. If this equipment does cause harmful interference to radio or television reception, which can be determined by turning off and on, the user is encouraged to try to correct the interference by one or more of the following measures:

- (1) Reorient or relocate the receiving antenna.

- (a) Increase the distance between the equipment and receiver

- (b) Connect the equipment into an outlet on a circuit different from that to which the receiver is connected.

- (2) Consult an experienced radio/TV technician for help.

CTR 21 pan-European Certification

This equipment has been approved in accordance with Council Decision 98/482/EC for pan-European single terminal connection to the public switched telephone network (PSTN). However, due to differences between the individual PSTNs provided in different countries, the approval does not, of itself, give an unconditional assurance of successful operation on every PSTN network termination point. In the event of problems, you should contact your equipment supplier in the first instance.

This device is designed to work with the notified networks in all EC member states. Nevertheless, some of the network services in individual countries might not be supported, but they will not affect the normal data and fax applications. For example, the metering charge service in Germany. Besides you may encounter difficulty of using PULSE dialing function in some of the countries, such as Nordic countries. This kind of network compatibility is dependent on the physical and software settings of this device. If the users are desired to use this device on those networks, they should contact the vendor or supplier first.

CONTENTS

INTRODUCTION.....	1
SPECIFICATIONS.....	1
SYSTEM REQUIREMENTS.....	1
PARTS NAMES AND FUNCTIONS.....	2
INSTALLATION.....	3
HARDWARE INSTALLATION	3
SOFTWARE INSTALLATION	3
SETUP DIAGNOSTICS.....	6
UNINSTALL	7
APPLICATIONS.....	8
USING BIT WARE TO SEND A FAX.....	8
INTERNET ACCESS.....	9
TROUBLE SHOOTING.....	11
APPENDIX A: AT COMMANDS SET	16
BASIC AT COMMANDS	16
RESULT CODES	26
AT& COMMANDS.....	30
AT\ COMMANDS - ERROR CORRECTION CONTROL	34
AT% COMMANDS	35
AT+MS COMMAND.....	36
AT* COMMANDS – BLACK LIST SUPPORT	39
APPENDIX B: S-REGISTERS.....	41
S-REGISTER SUMMARY	41

INTRODUCTION

The USB V.90 Fax/Modem complies with the Universal Serial Bus functionality built in Windows 98. It is compatible with Bell, ITU-T (formerly CCITT) and Hayes AT commands. With this USB V.90 Fax/Modem, you can enjoy all the benefit offered by USB technology and get a faster and easiest Internet access.

SPECIFICATIONS

Modem

V.90, K56flex 56Kbps, V.34+ 33.6Kbps, V.34 28.8Kbps, V.32bis 14.4Kbps.

V.42bis/V.42, MNP 2-5 data compression and error correction.

AT command set.

Fax

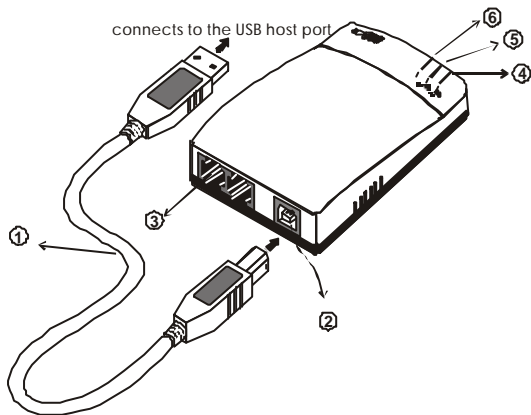
G3, V.17 14400bps, V.29 9600bps, Fax Service Class 1 compliant.

System Requirements

- A Pentium[®] processor-based personal computer 166MMX or above.
- At least 16 MB of RAM.
- An USB port
- Microsoft Windows 98.
- A CD-ROM drive.

Parts Names and Functions

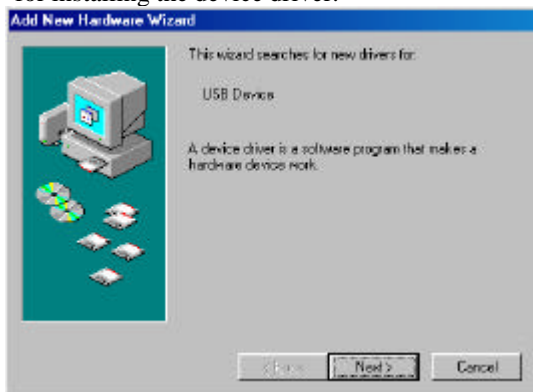
- ① **USB connection cable:** connects the USB host port with the USB V.90 FAX/MODEM.
- ② **USB-B:** USB device port.
- ③ **LINE** jack: connects to the phone line.
- ④ **OH** LED indicator: glows when it is in on-line status.
- ⑤ **Ready** LED indicator: glows when the device is well installed.
- ⑥ **Rx/Tx** LED indicator: blinks when the USB V.90 Fax/Modem is transmitting/receiving data.



INSTALLATION

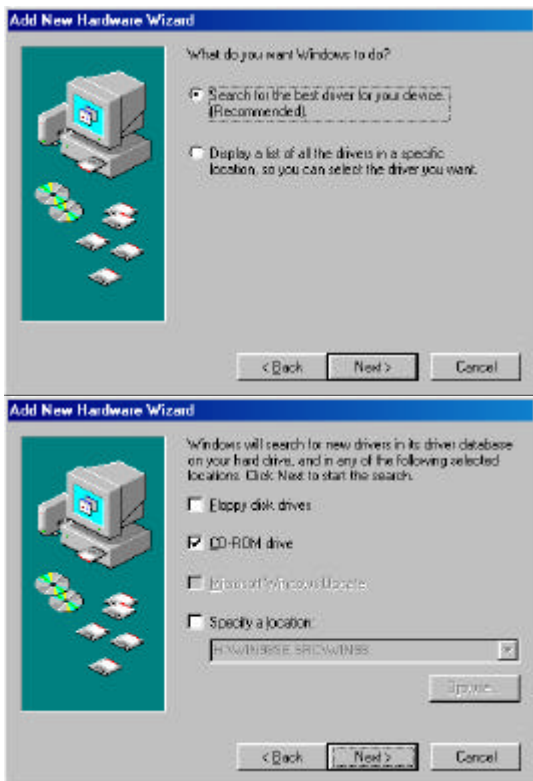
Hardware Installation

1. Locate the USB host port of your system. Align the USB connector toward the USB host port, push evenly and steadily until it is seated.
2. Connect another end of the USB connection cable to the device port (**USB B**) of your USB V.90 Fax/Modem until it clicks.
3. Connect your phone line to the **LINE** jack.
4. Windows 98 will automatically detect the new hardware device. Perform the following procedures for installing the device driver.

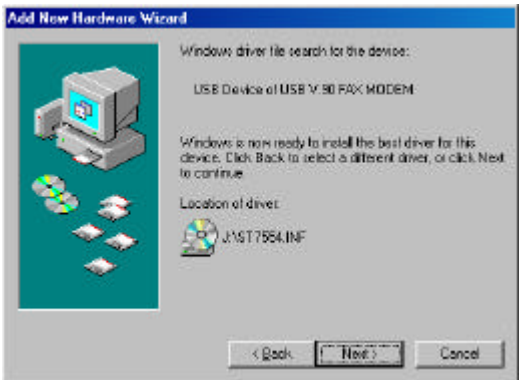


Software Installation

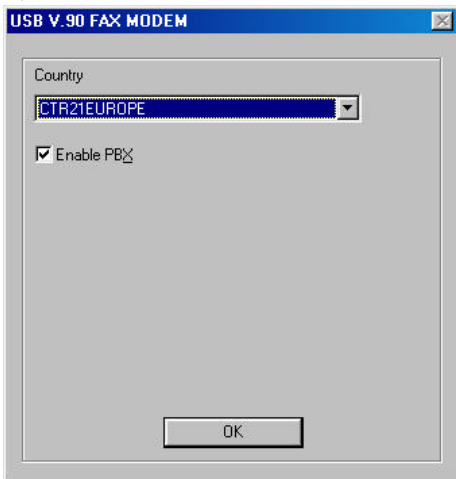
1. Insert the device driver compact disc into your CD-ROM drive. When the above figure appears, click **Next**.



2. The installation program will proceed automatically. Follow the on-screen instruction to continue.



3. When the following dialog box appears, select the country/location where you are, and check **Enable PBX**.

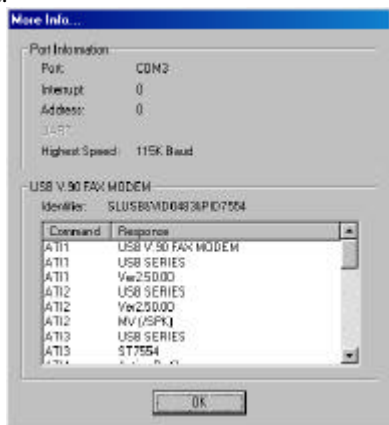


4. When finished, your system will be restarted to activate the new device.

Setup Diagnostics

You can perform the following steps to check if your USB V.90 Fax/Modem is well installed.

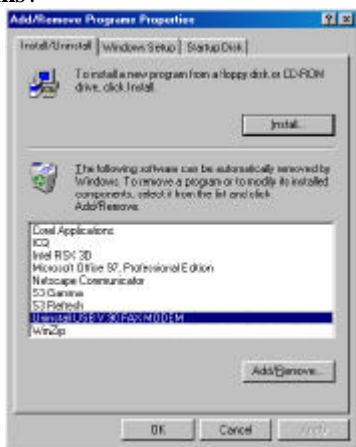
1. Go to the **Start** menu. Point to **Settings**. Click **Control Panel**. Double-click **Modems**.
2. When the **Modems Properties** dialog box appears, select the **Diagnostics** tab.
3. Select **USB V.90 FAX/MODEM** and click **OK**.
4. If the above screen does not at all include the USB V.90 FAX/MODEM, stop the diagnostics procedures, and skip to the following section titled “**Uninstall**”.
5. The USB modem is well installed if the information shown below can be found on the screen. Click **OK** to exit.



UNINSTALL

If for some reason, you have to uninstall the driver of USB V.90 Fax/Modem after installation, perform the following steps.

1. Go to the **Start** menu. Point to **Settings**. Click **Control Panel**. Double-click **Add/Remove Programs**.



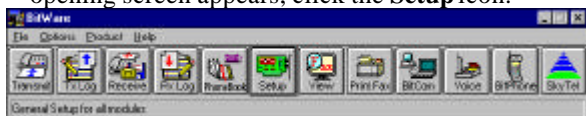
2. Point to **Uninstall USB V.90 FAX MODEM**. Click the **Add/Remove** button. And click **OK**.
3. Follow the on-screen instruction to finish.

APPLICATIONS

To use the USB V.90 Fax/Modem for data communication, for example, to send/receive faxes or to get onto the Internet, you may use any application software that you are familiar with. Or you may also choose to use the bundled application software that comes with the USB V.90 Fax/Modem. The following are examples for sending faxes and going to the Internet.

Using BitWare to Send a Fax

1. Be sure BitWare has been successfully installed in your system.
2. Go to the **Cheyenne BitWare** program. Double-click the Cheyenne BitWare icon. When the opening screen appears, click the **Setup** icon.

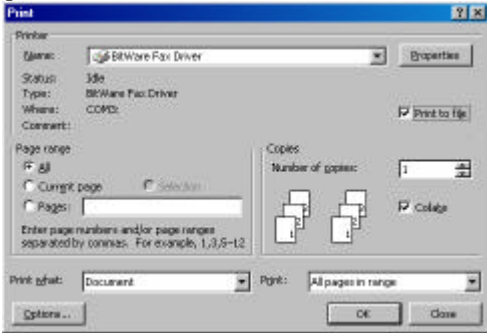


3. Select **Modem** when the **Setup** dialog box appears.

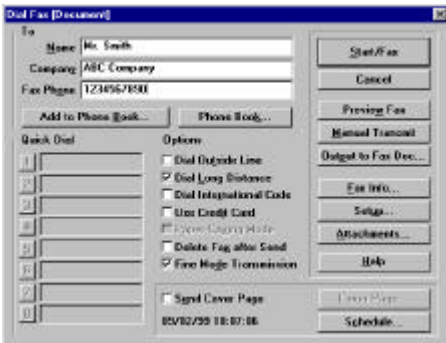


4. When the Modem Setup dialog box appears, press Auto Detect and click OK to continue. The BitWare Fax Driver is then successfully installed. Click **Close** to finish the setup.

5. Print the file you want to fax to file and set the printer to BitWare Fax Driver as shown below.

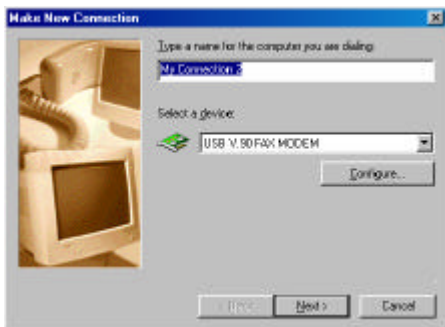


6. Click **Start** when the following dialog box appears. The fax will then be sent.



Internet Access

1. Go to **My Computer**.
2. Select **Dial-Up Networking**.
3. Double-click **Make a New Connection**, a dialogue box will appear for you to name the new connection and select the device. Name the new connection appropriately and click **Next**.



4. Enter the area code and phone number of your Internet Service Provider (ISP). Follow the on-screen instruction to proceed.
5. When finished, from the **Dial-Up Networking** window right-click your newly created connection. Select **Properties**. On the **Server Types** tab, enter the proper selections as shown below and click **OK** to finish the settings.



6. You are now ready to connect to the Internet.

TROUBLE SHOOTING

This chapter provides information on the most common problems, the possible causes, and the solutions.

The modem does not respond to AT commands.

- *Conflict of COMx: port setting with another device. Change the COMx: port of the USB 56K FAX/MODEM to a free port. Be sure to update your software COMx: port setting as well.*

The modem does not execute the command line.

- *Make sure you are typing 'AT' at the beginning of command line.*
- *Make sure the modem is not in Data Mode. type +++ if necessary.*
- *Make sure your software is set to the same COMx: port as the modem is.*

The modem does not give a response after an AT command was executed.

- *The echo and/or responses may be turned off by the ATE0Q1 commands.*

Use AT&V to check that.

Use ATE1Q0 then Enter to change them back.

- *Make sure the modem is in Command Mode rather than in Data Mode when you type the AT command.*

The modem gives an 'ERROR' response after an AT command was executed.

- *Make sure you did not type an invalid command.*
- *Make sure your command line is 40 characters or less in length.*

The modem goes off-hook and disables the telephone line.

- *The modem may be set to auto-answer mode when it rings.*

Typing ATSO=0, then Enter at the command line to disable the auto-answer mode.

The modem does not auto-answer the phone.

- *Make sure the software is configured to auto-answer the phone.*

Type ATSO=n then press Enter. The n stands for the number of rings the modem will answer on.

The software does not control the modem properly or can not detect the modem.

- *Make sure the software has been set up correctly. Check the initialization and dial strings.*
- *Some TSRs (programs that stay in memory after they are loaded) may conflict with the communications software.*

Restart your computer without loading any TSRs.

The characters on the screen are doubled.

- *Both the modem and the software have the echo feature turned on at the same time.*

Turn off the software echo feature off.

- *The remote modem is echoing your typed characters.*
- Type ATE1 then Enter at the command line. Then turn off the software echo feature.*

No text appears on the screen when in data mode.

- *The remote modem is not echoing your typed characters.*

Type ATE0 then press Enter at the command line. Then turn the software echo feature on.

- *Your software may not be set to use Full Duplex or the remote modem may not be set to use Full Duplex either.*
- *C:The remote modem may be waiting for you to type a command before it will reply with text.*

No text appears on the screen when in command mode.

If you can't see the characters you are typing, then type ATE1 then press Enter.

The modem does not dial a phone number after you execute the AT dial command.

- *If you are using touch tone dialing on a phone line that requires pulses, then it may not work.*
- Use ATDT in place of ATDP.*

When your communications software tells the modem to dial, it does not.

- *Make sure the software dialing prefix is ATDT.*
- *Make sure the software and modem are set to the same COMx: port.*
- *The modem may not have hung up the phone line since the last call.*

Change to command mode and type ATH then press Enter.

When dialing another modem, you receive a 'CONNECT' response, but nothing else.

- *The remote modem may be waiting for you to type a command. Or try to press Enter for logging on to the remote site.*

The modem speaker does not make any sound when you're connecting to another modem.

The software may have the speaker disabled.
Change the setting in your software or use the ATMn command to turn the speaker on.

The modem disconnects (looses the connection) in the middle of use.

- *The remote modem may have locked up.*
- *The telephone switch may have disconnected your call.*
- *Your software may have turned off the DTR signal.*

The modem does not connect with another modem.

-
- *There may be a problem with the remote modem if you do not hear the high pitched tone from the remote modem.*

Occasionally, the modem gives a burst of errors.

- *The telephone line may be noisy or bad.
Hang up the call and try to connect again for getting a better telephone line.*
- *If there are other telephones on the same line that your modem is using, someone may have picked up a telephone on that extension.*
- *Your telephone line may have the call waiting feature.
Try adding '*70,' to your ATDT dialing command line. If it doesn't help, ask your telephone company how to disable it temporarily.*

The modem gets errors in transmitted data randomly.

*Try to use V.42 or MNP1-4 if possible.
Connect the modems at a slower baud rate.*

After you download a file, it was not stored on your disk drive.

- *If both modems are using MNP or V.42 protocol, then the flow control may not be enabled.
Configure your software to use RTS/CTS flow control. That will cause your computer to pause long enough for the file to be stored to disk.*

The text on the screen is not legible.

- *Your software settings may not match the settings on the remote site.
Make sure your data bits, stop bits, and parity settings match the settings that the other computer is using. The two most common settings are: 8 data bits, None parity, and 1 stop bit (8,N,1) or 7 data bits, Even parity, and 1 stop bit (7,E,1).*
- *If the telephone line is very noisy, you may see corrupted data on your screen.*
- *Due to poor telephone line conditions, the modem may have fallen back to a slower communication speed. You*

may need to change the baud rate setting in your software to match this slower speed. To return the modem to the higher speed, disconnect the link and re-establish again.

When using V.42bis or MNP5, some features are disabled.

- *You may be using a non-streaming protocol, like Xmodem or Ymodem to transfer files. Those are fine unless you are using V.42bis or MNP5*

When using V.42bis or MNP5, you should use a streaming transfer protocol like Ymodem-G or Zmodem.

Configure your software to use hardware flow control (RTS/CTS ON).

When the modem is connecting to another modem, it reports a higher connect baud rate that it is really using.

- *The modem defaults to report the modem-to-computer baud rate when it responds with CONNECT.*

Go to command mode with your communication program (like Telix) and type ATW2, then press Enter. This tells the modem to report the modem-to-modem baud rate instead

APPENDIX A: AT COMMANDS SET

Basic AT Commands

A/ Re-execute Command

The modem repeats the last command line sent by the DTE. Usually used for re-dialing.

Note: This command should **not** be terminated by <CR>.

A Answer

The modem will go off-hook and attempt to answer an incoming call. Upon successful completion of handshake, the modem will go on-line in answer mode.

Notes:

If +FCLASS=0 is selected, the modem will enter the connect state after exchanging carrier with the remote system. If no carrier is detected within the period specified in S7, the modem hangs up. Any character entered while connecting will abort the connection process.

If +FCLASS=1, the modem will go off-hook in V21 answer mode. It will generate the V21 2100 Hz answer tone for 3 +/- 0.5 seconds, and following a delay of 70 ms, will proceed as if the +FTH=3 command were issued. At any stage up to (but excluding) the +FTH=3 command state, any character will abort the communication.

If +FCLASS=8 (#CLS=8), the modem will go off-hook and a voice session will take place.

Related S-Reg: S0

Bn CCITT Control

B0 Connect at V.22 1200 bps

Result codes:

OK n=0

Error Otherwise

Dn Dial

Directs the modem to go on-line, dial according to the string entered, and attempt to establish a connection.

The Dial String may consist of any of the characters described below:

- * T Tone dialing (first character in the string)
 - P Pulse dialing (first character in the string)
 - L Redial last dialed number (first character in the string)
 - 0-9 Digits 0 to 9.
 - * Asterisk (tone only)
 - # Hash (tone only)
 - W Wait for dial tone; the modem will wait for dial tone before dialing the digits following "W". S6 register will be used for timeout. (X3 or higher)
 - , (Comma); Pause for the time specified by S8 before resuming the dialing
 - ; (Semicolon) Return to command mode after dialing. This allows the user to issue additional AT commands while remaining off-hook. Actual call progress will be entered only after a dial command issued without the ";" terminator.
 - S=n Dial the number stored in the directory; n=0-3 (see &Z).
 - ! Flash; The modem will go on hook for a time defined by S24.
-

-
- @ Wait for silence; The modem will wait for at least 5 seconds of silence before resuming the dialing. If no such silence is detected before the expiration of the call abort timer (S7), the modem will terminate with NO ANSWER response (or BUSY if applicable). If answer tone arrives during execution of this parameter, the modem handshakes. (X3 or higher)
- (),< > (space) String format characters - ignored
- <i> any other character - ignored.

Notes:

If +FCLASS=0 is selected, the modem will attempt to connect with another data modem. The modem will use the time period specified in S6 and S7 as time-outs in the handshake process. If a timeout expires, the modem will go on-hook and respond with NO CARRIER response. The command will be aborted in progress if a DTE character is entered before completion of the handshake.

If +FCLASS=1, the modem will attempt to connect with a fax machine (or modem) by entering the HDLC V21 channel 2 receive state (as if +FRH=3 had been issued).

The command will be aborted upon receipt of a DTE character if the modem has not finished dialing. In this case the modem will go on-hook and return to command mode responding with NO CARRIER message. If the modem has finished dialing, It proceeds as if +FRH=3 command has been issued.

If +FCLASS=8 (#CLS=8), the modem will go off-hook in V21 answer mode. It will decide (based on timers) when the other side answers in voice and a voice session will take place.

Related S-Reg: S5,S6,S7,S16,S22,S28,S56

En Set local echo

The modem enables/disables echo of characters to DTE.

Parameter value is written to S13.

* E0 Disable command echo.

E1 Enable command echo.

Result codes:

OK n=0 or 1

Error Otherwise

Related S-Reg: S13

Hn Set ON/OFF hook

H0 Modem hangs up (goes on-hook).

* H1 Modem goes off hook.

Result codes:

OK n=0 or 1

Error Otherwise

In Identification/Information

I1 Modem Name, Vendor Name, Modem Version,

for example :

ModemX

ModemWorks Ltd.

Ver 1.10

I2 SW Provider /SW Version, for example

Smart Link Ltd.

Ver 1.20

I3 Chipset Vendor/Chipset ID, for example
 Chip Vendor Ltd.
 XY4220

I4 Modem active profile for example,
 Active Profile:
 S00=000 S01=000 S02=000 S03=000
 S04=000 S05=000 S06=000 S07=000
 S08=000 S09=009 S10=000 S11=000
 S12=000 S13=000 S14=000 S15=000
 S16=000 S17=000 S18=000 S19=019
 S20=000 S21=000 S22=000 S23=000
 S24=000 S25=000 S26=000 S27=000
 S28=000 S29=000 S30=000 S31=000
 S32=000 S33=000 S34=000 S35=000
 S36=000 S37=000 S38=000 S39=000
 S40=000 S41=000 S42=000 S43=000
 S44=000 S45=000 S46=000 S47=000

I5 Stored profile 0
 Active Profile 0:
 (Same format as above)

I6 Stored profile 1
 Active Profile 1:
 (Same format as above)

I7 Display stored phone numbers
 (See &Z command)

Ln Speaker volume

Select speaker volume.

L0 Low

L1 Low

* L2 Medium

L3 High

Result codes:

OK n=0-3

Error Otherwise

Related S-Reg: S30

Mn Speaker control

Select when the speaker is On/Off.

M0 Speaker always OFF

* M1 Speaker ON from start of dialing until
receiving carrier

M2 Speaker always ON

M3 Speaker OFF from end of dialing until
receiving carrier

Result codes:

OK n=0-3

Error Otherwise

Related S-Reg: S29

Nn Automode control

Enable/Disable Automode detection.

N0 Automode detection disabled. A subsequent
handshake will be conducted according to
the contents of S32.

* N1 Automode enabled. A subsequent handshake

will be conducted according to the Automode algorithm.

Result codes:

OK n=0 or 1

Error Otherwise

Related S-Reg: S31

On Returns to on-line data mode

This command is normally used to connect the DTE back after an escape (+++) has been issued.

O0 Return to on-line data mode.

O1 Return to on-line data mode, retrain first.

Result codes:

OK n=0-1

Error Otherwise

P Pulse dialing

Forces pulse dialing. Applies to subsequent dialing commands.

This command holds until the next T dial modifier or T command is received.

The modem will go off hook and attempt to answer an incoming call. Upon successful completion of handshake, the modem will go on-line in answer mode.

Related S-Reg: S16

Q Quiet result codes control

* Q0 Enable sending result codes to DTE.

Q1 Disable sending result codes to DTE.

Result codes:

OK n=0 or 1
Error Otherwise
Related S-Reg: S14

S Read/Write S-Register

This command has a few derivatives:

Sn=v Sets the value v (decimal) to S-register n
 (v=0-255)

Sn? Displays the value of S-register in decimal
 format (3 digits)

Note: Some registers are read-only

Result codes:

OK All parameters valid

Error Invalid S register or value. Trying to write
 to a read-only register

T Tone dialing

Forces tone dialing. Applies to subsequent dialing
commands.

This command holds until the next T dial modifier
or T command is received.

This command changes S14 to reflect the current
dialing mode.

Related S-Reg: S16

Vn Verbose/Numeric result codes

Select the time of result messages sent to the DTE.

For a list of result codes and verbal messages see X
command.

* V0 Short form (numeric) result codes to be sent
 to DTE.

V1 Long form (verbose) result codes to be sent
 to DTE.

Result codes:

OK n=0 or 1

Error otherwise

Related S-Reg: S15

Xn

Extended result codes

Select the subset of result codes to be used by the modem to the DTE.

If the modem is in fax mode (+FCLASS=1), the only message sent to indicate connection is "CONNECT" without a speed indication.

X0 Supported messages: OK, CONNECT, RING, NO CARRIER and ERROR, Blind call enabled.

X1 Supported messages: OK, CONNECT xxxx, RING, NO CARRIER and ERROR, Blind call enabled.

X2 Same as X1 + NO DIAL TONE message, Blind call disabled

X3 Same as X1 + BUSY message, Blind call enabled.

* X4 All messages supported, Blind call disabled (see list below).

Notes:

W,@ dial modifiers are ignored in X1, X2

S6 (Wait before dial) is ignored in X2, X4 if no W is specified in dial string

S6 is set to 0 means a blind call

Result Codes

Result Code	Message	X0	X1	X2	X3	X4
0	OK	*	*	*	*	*
1	CONNECT	*	*	*	*	*
2	RING	*	*	*	*	*
3	NO CARRIER	*	*	*	*	*
4	ERROR	*	*	*	*	*
5	CONNECT 1200	1	*	*	*	*
6	NO DIAL TONE	3	3	*	3	*
7	BUSY	3	3	3	*	*
8	NO ANSWER	3	3	3	*	*
9	CONNECT 0300	1	*	*	*	*
10	CONNECT 0600	1	*	*	*	*
11	CONNECT 2400	1	*	*	*	*
12	CONNECT 4800	1	*	*	*	*
13	CONNECT 7200	1	*	*	*	*
27	CONNECT 9600	1	*	*	*	*
14	CONNECT 12000	1	*	*	*	*
15	CONNECT 14400	1	*	*	*	*
16	CONNECT 16800	1	*	*	*	*
17	CONNECT 19200	1	*	*	*	*
18	CONNECT 21600	1	*	*	*	*
19	CONNECT 24000	1	*	*	*	*
20	CONNECT 26400	1	*	*	*	*
21	CONNECT 28800	1	*	*	*	*
22	CONNECT 31200	1	*	*	*	*
23	CONNECT 33600	1	*	*	*	*
24	CONNECT 34800	1	*	*	*	*
25	CONNECT 40000	1	*	*	*	*
26	CONNECT 42000	1	*	*	*	*

28	CONNECT 44000	1	*	*	*	*
29	CONNECT 46000	1	*	*	*	*
30	CONNECT 48000	1	*	*	*	*
31	CONNECT 50000	1	*	*	*	*
32	CONNECT 52000	1	*	*	*	*
33	CONNECT 54000	1	*	*	*	*
34	CONNECT 56000	1	*	*	*	*
35	CONNECT 57600	1	*	*	*	*
36	CONNECT 115200	1	*	*	*	*
37	CONNECT 230400	*	*	*	*	
38	CONNECT 460800	1	*	*	*	*
39	CONNECT 921600	1	*	*	*	*
40	CONNECT 32000	*	*	*	*	
41	CONNECT 34000	1	*	*	*	*
42	CONNECT 36000	1	*	*	*	*
43	CONNECT 38000	*	*	*	*	*
44	CONNECT 58000	*	*	*	*	*
45	CONNECT 60000	*	*	*	*	*
46	CONNECT 28000	*	*	*	*	*
47	CONNECT 29333	*	*	*	*	*
48	CONNECT 30666	*	*	*	*	*
49	CONNECT 33333	*	*	*	*	*
50	CONNECT 34666	*	*	*	*	*
51	CONNECT 37333	*	*	*	*	*
52	CONNECT 38666	*	*	*	*	*
53	CONNECT 41333	*	*	*	*	*
54	CONNECT 42666	*	*	*	*	*
55	CONNECT 45333	*	*	*	*	*
56	CONNECT 46666	*	*	*	*	*
57	CONNECT 49333	*	*	*	*	*
58	CONNECT 50666	*	*	*	*	*

59	CONNECT 53333	*	*	*	*	*
60	CONNECT 54666	*	*	*	*	*
70	FAX	*	*	*	*	*
71	DATA	*	*	*	*	*
100	VCON	4	4	4	4	*
101	DELAYED	4	4	4	4	*
102	BLACKLISTED	4	4	4	4	*
66	COMPRESSION: CLASS 5	-	*	*	*	*
67	COMPRESSION: V.42BIS	-	*	*	*	*
69	COMPRESSION: NONE	-	*	*	*	*
76	PROTOCOL: NONE	-	*	*	*	*
77	PROTOCOL: LAPM	-	*	*	*	*
78	PROTOCOL: MNP	-	*	*	*	*
1021	MODULATION: V.21	-	*	*	*	*
1022	MODULATION: V.22	-	*	*	*	*
1032	MODULATION: V.32	-	*	*	*	*
1034	MODULATION: V.34	-	*	*	*	*
1103	MODULATION: B103	-	*	*	*	*
1122	MODULATION: V.22BIS	-	*	*	*	*
1132	MODULATION: V.32BIS	-	*	*	*	*
1134	MODULATION: V.34BIS	-	*	*	*	*
1212	MODULATION: B212	-	*	*	*	*

+F4 +FCERROR

* * * * *

- <*> message will be generated when n has been selected
- <i> message will be replaced by message <l> when n has been selected
- <-> message will not be generated when n has been selected.

Related S-Reg: S56

Yn Select default configuration

Select the default user defined configuration.

Note: The default configuration is not loaded by Yn (See Zn)

Y0 Select user template 0

Y1 Select user template 1

* Y2 Select factory setting 0

Y3 Select factory setting 1

Related S-Reg: S161

Zn Select user defined configuration

Select the user defined configuration.

Z0 Select default user template (as defined by Yn)

Z1 Select user template 0

Z2 Select user template 1

Z3 Select factory setting 0 (&F0)

Z4 Select factory setting 1 (&F1)

Result codes:

OK n=0-5

Error Otherwise

Related S-Reg: S59

AT& Commands

&An Connect message format

Select the format of the CONNECT message.

* **&A0** no extra messages besides CONNECT
xxxxx

&A1 Add Modulation indicator:

V.21/ V.22/ V.22BIS/ V.32/ V.32BIS/ V.34/
V.34BIS/ B103/ B212

For example:

Modulation: V.34

&A2 Add Error Detection Protocol and Data
Compression indicators.

For example:

Protocol: LAPM/MNP/NONE

Compression: CLASS 5/V.42BIS/NONE

&A3 Add Modulation Indicator + Error Detection
Protocol + Data Compression indicators
(see above).

Related S-Reg: S70, S71

&Cn Control Carrier Detect (CD,RLSD) behavior

Controls the RLSD output behavior.

&C0 RLSD is assumed to be ON all the time

* **&C1** RLSD follows the carrier state

Result codes:

OK n=0 or 1

Error Otherwise

Related S-Reg: S60

&Dn Controls DTR behavior (NA)

Controls the DTR output behavior.

Note: This command is supported for

compatibility.

* It has no significance in Modio environment.

&D0 DTR is taken to be ON all the time

&D1 DTR drop causes entry to command mode without disconnect

&D2 DTR follows DTR circuit definition

&D3 DTR drop causes software reset (as in Z0)

Result codes:

OK n=0-3

Error Otherwise

Related S-Reg: S63

&En Connect message speed source

Select the requested source for the speed field in the CONNECT message.

* &E0 DCE Speed

&E1 DTE Speed

Note: Since a virtual port is involved, the DTE is not bound by any UART limitation, and may be theoretically set as high as 921600.

DTE speed is supported for compatibility only. It bears little significance in Modio environment.

Related S-Reg: S71

&Fn Sets factory configuration

Select one of the factory settings.

&F0 Select factory setting 0

&F1 Select factory setting 1

Result codes:

OK n=0-1

Error Otherwise

Related S-Reg: S59

&Hn Sets flow control

Select the user defined configuration.

&H0 Flow control disabled (NA)

* &H1 “HW” flow control RTS/CT S (emulation)

Result codes:

OK n=0-1

Error Otherwise

Related S-Reg: S62

&Kn Same as %Cn

&Pn Set pulse dial make/break ratio

* &P0 US & Canada 39%/61% (10 pps)

&P1 UK & Hong Kong 33%/67% (10 pps)

&P2 Same as 0, except at 20 pps

&P3 Same as 1, except at 20 pps

Result codes:

OK n=0-3

Error Otherwise

Related S-Reg: S28

&Rn Controls RTS behavior

Controls the RTS output behavior.

Note: This command is supported for compatibility.

It has no actual effect

&R0 RTS ignored

&R1 Modem receives data only on RTS (NA)

Result codes:

OK n=0 or 1

Error Otherwise

Related S-Reg: S61

&Sn Controls DSR behavior

Note: This command is supported for compatibility.

It has no actual effect.

&S0 DSR override (is assumed to be ON all the time)

&S1 DSR follows circuit definition

Result codes:

OK n=0 or 1

Error Otherwise

Related S-Reg: S64

&V Display Active profile, Stored Profiles, Stored Phone Numbers (Equivalent to I4-I7 combined)

&Wn Writes current configuration

&W0 Write to template 0

&W1 Write to template 1

Result codes:

OK n=0-1

Error Otherwise

Written to registry.

&Zn Stores dial string

Stores/Displays dial string (up to 47 characters)

&Zn=s Store dial string (n=0-4)

&Zn=L Store the last dialed string (n=0-4)

&Zn? Display the nth string

&ZL? Display the last dialed string
Written to registry.

AT\ Commands - Error correction control

\An Maximum MNP block Size

\A0 64 characters maximum block size

* \A1 128 characters maximum block size

\A2 192 characters maximum block size

\A3 256 characters maximum block size

Result codes:

OK n=0-3

Error Otherwise

Related S-Reg: S<basereg+1> of V.42 registers

\Bn Transmit break to remote (-)

In non-error correction mode, the modem will transmit a break signal to the remote modem with a length of n*100ms. If a number above 9 is entered, 9 is used.

Result codes:

OK if connected in data modem mode

Error if not connected or if connected in fax modem mode

\Kn Break Control (-)

Controls the response of the modem to a break received from DTE or a remote modem or the \Bn command.

The behavior parameter is written to Sxx

\K0 Enter on-line command mode, no break sent to remote modem

\K1 Clear data buffers and send break to remote

	modem
\K2	Same as 0
\K3	Send break to remote modem immediately
\K4	Same as 0
* \K5	Send a break to remote modem in sequence with transmitted data
Related S-Reg: S<basereg+x> of V.42 registers	
Result codes:	
OK	n=0-5
Error	Otherwise
\Nn	Error correction operating mode
\N0	Normal (Speed buffering) - No error correction
\N1	Direct (pass-through) 128 characters maximum block size
\N2	Reliable (error correction) mode. The Modem will attempt LAPM and then MNP
* \N3	Auto reliable mode. Same as \N2, but will fall back to Normal
\N4	LAPM error correction mode only, hang up upon failure.
\N5	MNP error correction mode only, hang up upon failure.
Result codes:	
OK	n=0-5
Error	Otherwise
Related S-Reg: S<basereg> of V.42 registers	

AT% Commands

%Cn Compression control

-
- %C0 Disable data compression
 - %C1 Enable MNP5 data compression
 - %C2 Enable V.42bis data compression
 - * %C3 Enable MNP5/V.42bis data compression

Result codes:

OK n=0-3

Error Otherwise

Related S-Reg: S<basereg+2> of V.42 registers

%En Line quality monitor control

Controls whether or not the modem will automatically monitor

the line quality and request a retrain (%E1), or fall back when

quality is insufficient or fall forward when line quality improves (%E2).

*

%E0 Disable line quality control

%E1 Enable line quality control and auto retrain

%E2 Enable line quality control and fallback/forward

Result codes:

OK n=0-3

Error Otherwise

Related S-Reg: S39

AT+MS Command

+MS Modulation select

This command selects the modulation, optionally enables/disables Automode, and optionally specifies

the lowest and highest connection rates.

The command format is:

AT+MS=

[<mod>][,<automode>][,<min_rate>][,<max_rate>]]]

<mod>	a decimal number specifying the preferred modulation (automode enabled), or the modulation (automode disabled).
<automode>	0/1 Automode disabled/enabled
<min_rate>	minimum rate for connection. If lower than the actual minimum rate for the selected modulation, the actual lowest supported rate will be taken.
<max_rate>	maximum rate for connection. If higher than the actual maximum rate for the selected modulation, the actual highest supported rate will be taken.

Table 1 - +MS command parameters

<mod>	Modulation	Possible rates
22	V.22	1200
122	V.22bis	2400,1200
32	V.32	9600, 4800
132	V.32bis	14400, 12000, 9600, 7200, 4800
34	V.34	33600, 31200, 28800, 26400, 24000, 21600, 19200,16800, 14400, 12000, 9600
56	K56Flex	32000,34000,36000 ,56000

90	V.90	29333, 30666,32000,56000
212	Bell 212	1200
103	Bell 103	300

Examples:

AT+MS=34,0,4800,33600	V.34, No Automode, Min. speed 4800, Max speed 33600
AT+MS=,1	Automode
AT+MS=32,1,,14400	V.32 Automode, Max speed 14400 (min speed as before)

Factory Settings: 90,1,300,56000

The requested modulation scheme will be written to S32

The requested min rate will be written to S33

The requested max rate will be written to S34

The actual rate may be read from S35

The actual modulation scheme may be read from S37

(The codes as specified in the Xn command)

Other derivatives of the +MS command:

AT+MS?	report current MS settings (e.g. 34,1,9600,33600)
AT+MS=?	list the supported values +MS:(22,122.....), (0,1), (300- 33600), (300-33600)

Result codes:

OK Syntax OK

Error Otherwise

Related S-Reg: S31-S37

AT* Commands – Black List Support

***Note:** The following command will always return OK as a result code.*

***B** Return Blacklisted numbers

Blacklisting is a country dependent parameter.

When no time-out is defined:

When a number is unsuccessfully called x successive times, it is blocked altogether, until next system reset.

Further calls will return **BLACKLISTED** code.

When time-out is defined:

When a number is unsuccessfully called x successive times, it is blocked temporarily until the time-out expires.

Calls within the time-out period will return **DELAYED** code.

Format:

No.	Called	Blocked	Phone
Index	# of calls	‘ ‘ (blank)	Phone number

- not blocked

(number still candidate for blacklist)

or

‘*’ (asterisk) - blacklisted/blocked

or

‘Xmin’ - # of min to time-out – delayed

Example 1: No time-out defined. Full blocking occurs

No.	Called	Blocked	Phone
1	5	*	t1234
2	3		t5678

Example 2: Time-out defined. Delay scheme used.

No.	Called	Blocked	Phone
1	5	2min	t1234
2	3		t5678

APPENDIX B: S-REGISTERS

S-Register Summary

S#	Function	Range	Units	PW	Default	AT Command
S0	Rings to Auto-Answer	0-255	rings		0	A
S1	Ring Counter	0-255	rings		0	
S2	Escape Character	0-255	ASCII		43	
S3	CR Character	0-255	ASCII		13	
S4	LF Character	0-255	ASCII		10	
S5	BS Character	0-255	ASCII		8	
S6	Wait Time for Dial Tone (Also wait before Blind Dialing)	2-255	s	*	2	D
S7	Wait Time for Carrier	1-255	s	*	60	D
S8	Pause Time for Dial (,)	0-255	s		2	D
S9	Carrier Detect Response Time	1-255	0.1s		6	

S10	Carrier Loss Disconnec t Time	1-255	0.1s	*	7	
S11	DTMF Tone duration	50-255	0.001s	*	100	D
S12	Reserved					
S13	Echo	0-1			1	E
S14	Quiet	0-1			0	Q
S15	Verbose	0-1			1	V
S16	Pulse/ Tone	0-1		*	1	T,P,D
S17	Reserved					
S18	Test Timer	0-255	s		0	&T
S19	System Inactivity Timer	0-255	min		0	
S20	Reserved					
S21	Break Length	0-9	100ms		9	\B
S22	Origin/Ans wer	0-1			0	
S23	XOFF Character (NA)	0-127	ASCII		19	
S24	Flash Timer	0-255	10 ms		20	