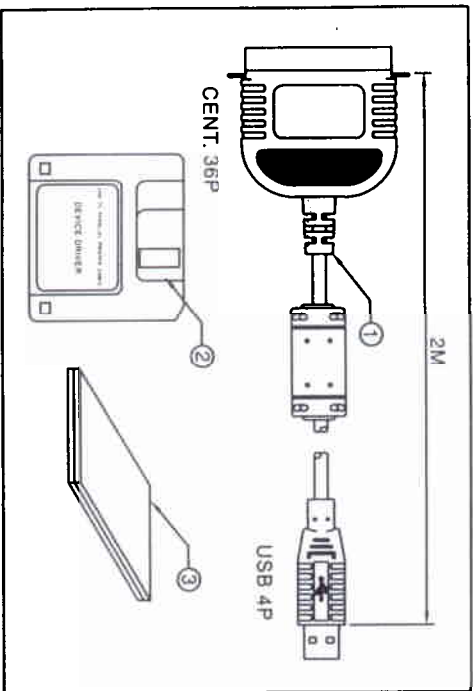


USB^{to} Parallel printer cable



This Package includes:

- | | | |
|---------------------------------------|---|----|
| 1. USB to Parallel printer cable assy | 1 | pc |
| 2. Device driver diskette | 1 | pc |
| 3. User's manual | 1 | pc |

Requirements:

- A. Host : available USB port.
- B. Printer : 36pin Centronic Parallel port.
- C. Windows 95, Windows 98 & Windows NT 5.0, Windows must be OSR 2.1 version, which contains USB supplement.

Installing the hardware:

- A. Start the Windows operating system.
- B. Plug the USB cable's Centronic 36pin side into the printer parallel port.
- C. Plug the USB cable's 4pin side to PC's USB port.
- D. Turn the printer power on, and begin the software installation.

USB^{to} Parallel printer cable

Installing the software

- A. Verify that USB channel is set up properly under Windows 95/98 system.
- B. Perform the Windows procedures for "installing new hardware", and insert the appropriate disk when required. (as FIG.1)

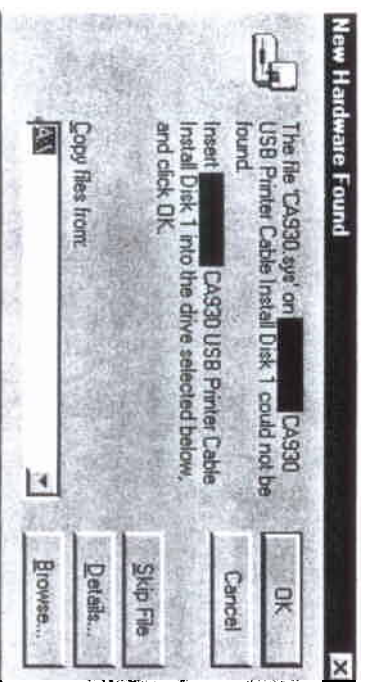


FIG.1

Troubleshooting Guide - USB Parallel Cable

Q: What operating systems with the USB to parallel cable work?

Windows 95 Rev. B, Windows 98 and Windows NT 5.0.

Q: How can I tell if my computer is USB ready?

Make sure the USB interface for your computers CMOS has been enabled (follow instructions in your computer's user manual on how to configure your CMOS).

Go to Start setting, Control Panel, System and click on Device Manager. You should have the last device as USB Serial Bus Controller. When you click on it you should have the USB Universal Host Controller and USB Root Hub. (as FIG.2)

If you don't have these 2 drivers then you need to install it from the disk.

Q: During the installation, a message comes up stating that it cannot find a designated file?

You may have the default drive as C: drive. Please designate the drive letter path as A: and click OK or press enter.

USB^{to} Parallel printer cable

Q: The port under the properties, Detail section is "CA930USB1"?

Try installing the printer driver again using the disk provided by the printer manufacturer.

Go to Control Panel, Printers icon, right click on the printer connected and select properties. Select Details and change port type to CA930USB1 (printer name) and click OK. (as FIG.3)

Q: Can I have more than one USB to Parallel adapter on my computer to allow more printers on my USB ports?

Yes, you can use multiple USB to Parallel devices therefore creating more than one CA930USB1 port. The limit is set by the limit of USB devices allowed on a computer.

Q: I have gone through all of the above troubleshooting steps and I still cannot print?

Run A: Cleanup.exe file from the Start run menu. Reboot the computer and follow the instructions for the NEW INSTALLATION. Try installing the printer driver again using the disk provided by the printer manufacturer.

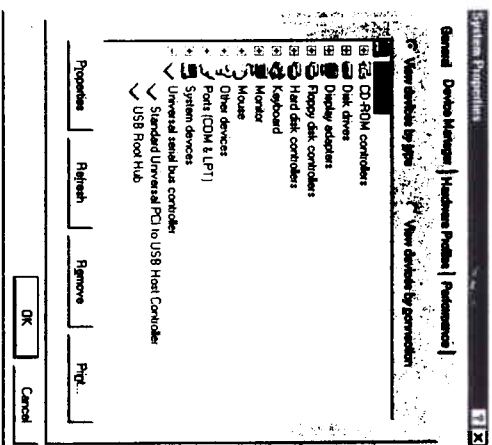


FIG.2

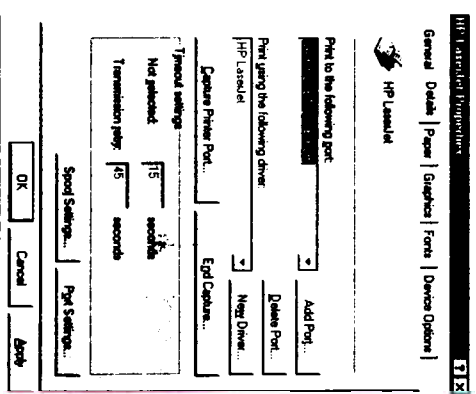


FIG.3