

SMT-Spider-Instruction

Überblick

SMT-Spider is a utility software that allows you to search and graphically display all Allnet full managed switches located on your LAN network, as shown in the following illustration:

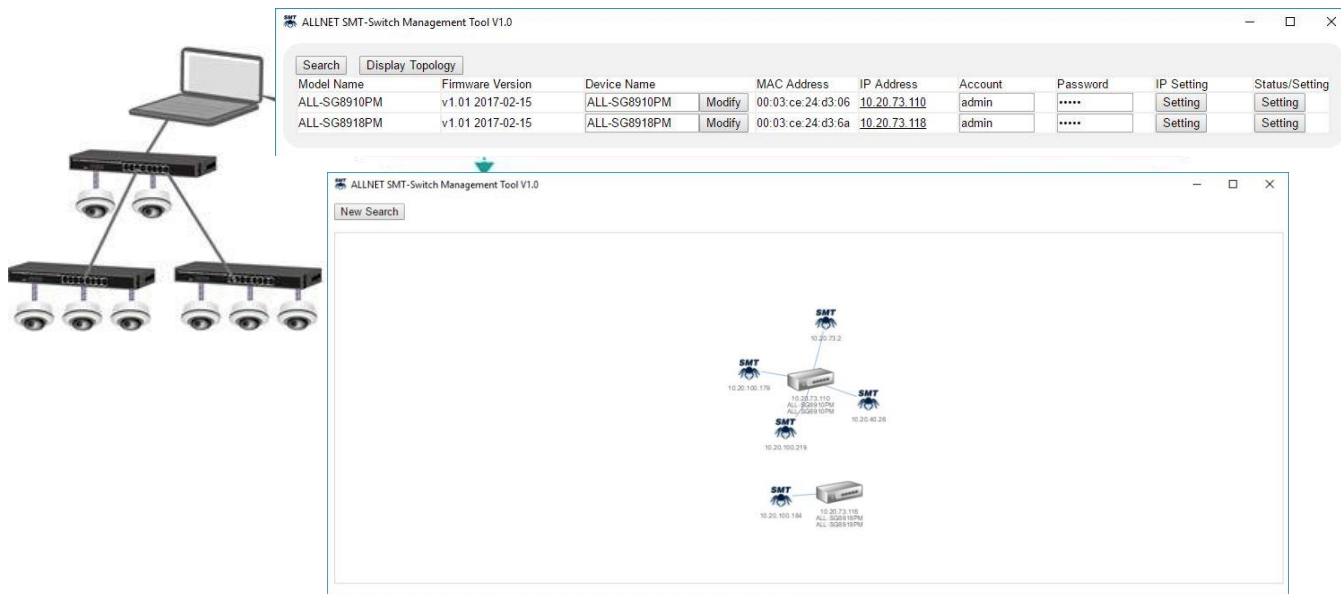


Abb 1 SMT-Spider

This guide is divided into 2 sections:

- ☐ Section A: Describes how to install SMT-Spiders on your PC
- ☐ Section B: Provides a brief guide to SMT spiders.



Note: Please note that SMT-spider only works on certain switch models with specific (or new) firmware. The switches and firmware which support SMT spiders are:

Model Name		F/W Version	
Full Management	PoE	ALL-SG8910PM	v1.01 2017-02-15
		ALL-SG8918PM	v1.01 2017-02-15
		ALL-SG8926v2PM	v1.01 2017-02-15
		ALL-SG8950PM	v1.01 2017-02-15
		ALL-SG8826PMX-10G	v1.01 2017-02-15
	Non PoE	ALL-SG8950M	v1.01 2017-02-15
		ALL-SG8826MX-10G	v1.01 2017-02-15

*** LACP/Filter/VeriPHY functions are removed, LLDP function is added**

If your switch or firmware is not listed here, SMT-Spider cannot find your switch on the LAN network.

Section A

This section of the Quick Start guide will show you how to install SMT-Spider. SMT-Spider supports operating systems such as Microsoft Windows (Win7, Win8 and Win10 32/64bits), Linux (Ubuntu 14.04 or higher) and Mac OS X (from OS X 11). Note that your PC must have at least 90 MB of hard disk space to install SMT spiders. The following section will guide you through the installation of SMT-Spiders on Microsoft Windows, Linux and Mac OS X.

Section A-1 installation of SMT-Spider for Microsoft Windows

Step 1 Double-click the SMT-Spider-Setup icon.



Abb. A-1-1 SMT-Spider Installation Software

Step 2 The default target directory is "c: \ Program Files (x86) \ SMT-Spider". You can change the directory of SMT Spiders by pressing the "Browse..." button.

Press the Next button to continue

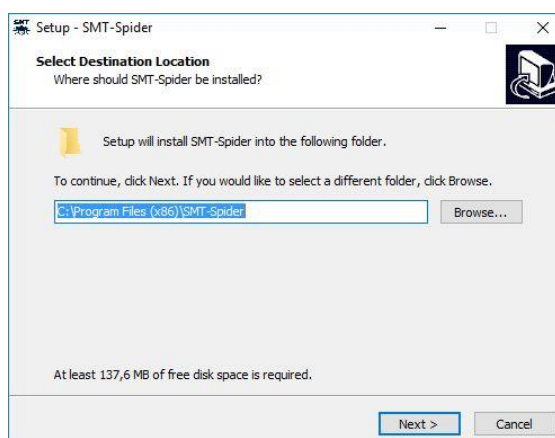


Abb. A-1-2 Wählen Sie das Installationsverzeichnis aus

Step 3 If the directory folder does not exist, the installation software asks if you want to create a file directory for SMT Spiders. Press Yes to proceed.

SMT-Spider-Instruction

Step 4 The installation software asks if you want to create a desktop shortcut. Press the Next button to proceed.

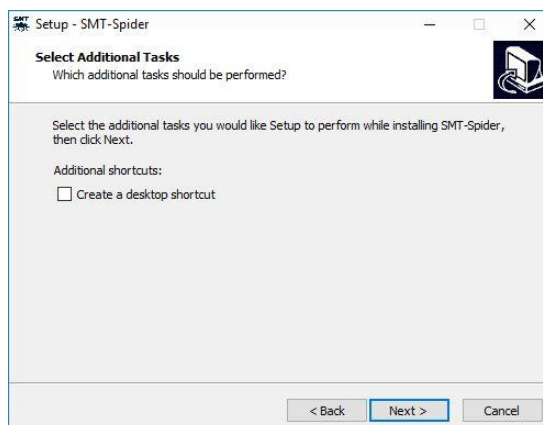


Abb. A-1-4 Erstellen der Desktopverknüpfung

Step 5 Click "Install" to start the installation of SMT-spiders.

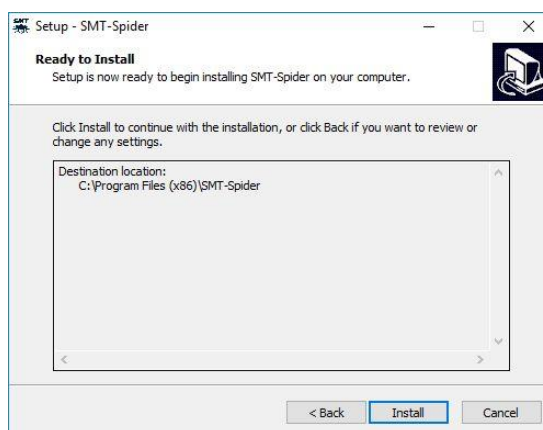


Abb. A-1-5 Starten der Installation von SMT-Spider

Step 6 Installation.

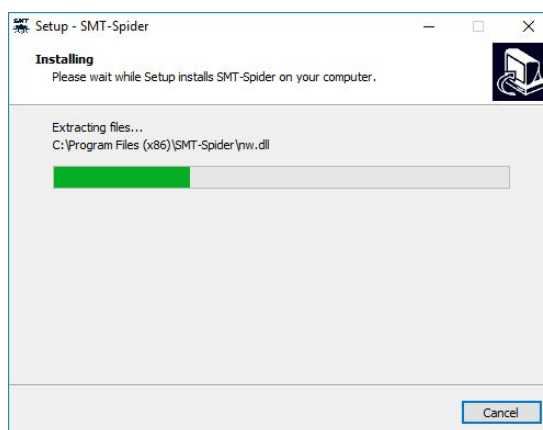


Abb. A-1-6 Installieren von SMT-Spider.

Step 7 Installation complete. Click the Finish button to complete the installation and start the SMT spider.

SMT-Spider-Instruction

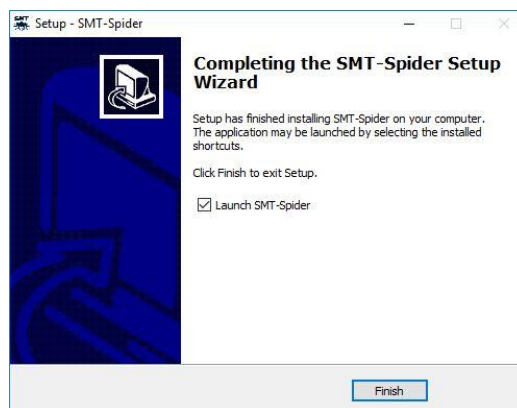


Abb. A-1-7 Installation abgeschlossen

Section A-2 Installation von SMT-Spider für Linux

Step 1 SMT-Spider's Linux version comes as "*.tgz" compression file. Please unpack the "*.tgz" file.



Abb. A-2-1 SMT-Spider Komprimierungsdatei

Step 2 After uncompressing the "*.tgz" file, double-click on the "app" file as shown in Fig. A-2-2.

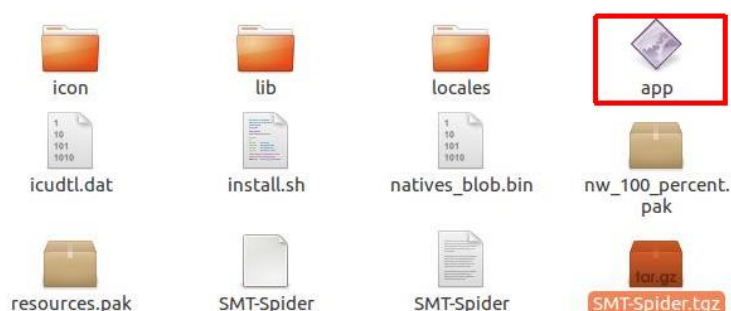


Abb. A-2-2 Wählen Sie das Installationsverzeichnis aus

Step 3 The icon of the SMT-spider file changes as shown in Figure A-2-3. To start SMT-Spider, simply double-click on the SMT-Spider-File with the SMT-spider icon.



Abb. A-2-3 Einstellung abgeschlossen

SMT-Spider-Instruction

Section A-3 Installation von SMT-Spider für MAC OS X

Step 1 SMT-Spider's Mac OS X version comes as "*.zip" compression file. Please unpack the "*.zip" file



Abb A-3-1 SMT-Spider Komprimierungsdatei

Step 2 To run the SMT-Spider, double-click on the SMT-spider file as shown in Figure A-3-2

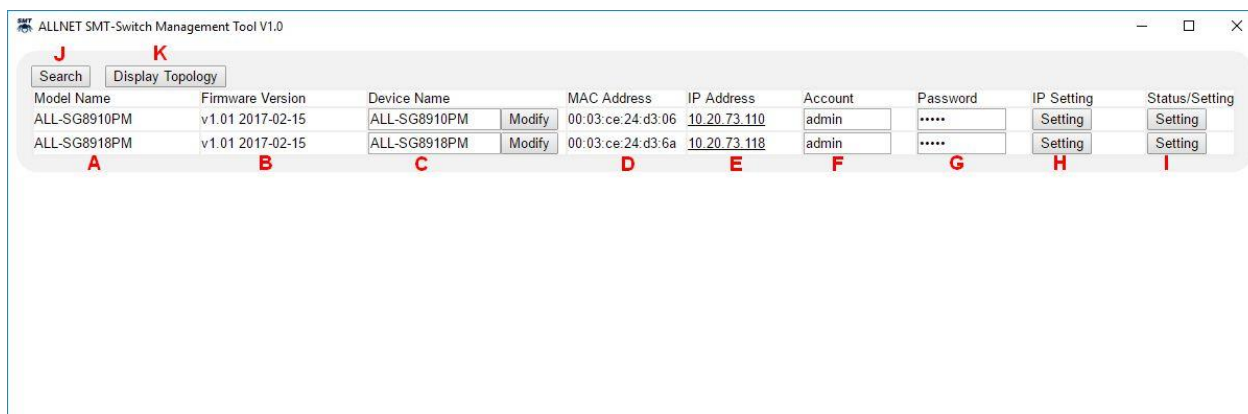


Abb. A-3-2 Einstellung abgeschlossen

Section B

In this section of the Quick Start guide you will learn how to use SMT-spiders.

When starting SMT-Spider, it will start searching for all eten switches that are connected to your LAN. All eten switches that SMT-Spider found will be displayed on the switch search result page.



Model Name	Firmware Version	Device Name	MAC Address	IP Address	Account	Password	IP Setting	Status/Setting
ALL-SG8910PM	v1.01 2017-02-15	ALL-SG8910PM <input type="button" value="Modify"/>	00:03:ce:24:d3:06	10.20.73.110	admin	*****	<input type="button" value="Setting"/>	<input type="button" value="Setting"/>
ALL-SG8918PM	v1.01 2017-02-15	ALL-SG8918PM <input type="button" value="Modify"/>	00:03:ce:24:d3:6a	10.20.73.118	admin	*****	<input type="button" value="Setting"/>	<input type="button" value="Setting"/>

A. Model Name: This field displays the model name of the switch.

B. Firmware version: This field shows the firmware version of the switch

C. Device Name: This field displays the device name. You can also change the name of the device in the field. The device name must consist of up to 16 alphanumeric characters and spaces. After you have finished the changes, click the "Modify" button to apply your settings

D. MAC Address: This field displays the MAC address of the switch.

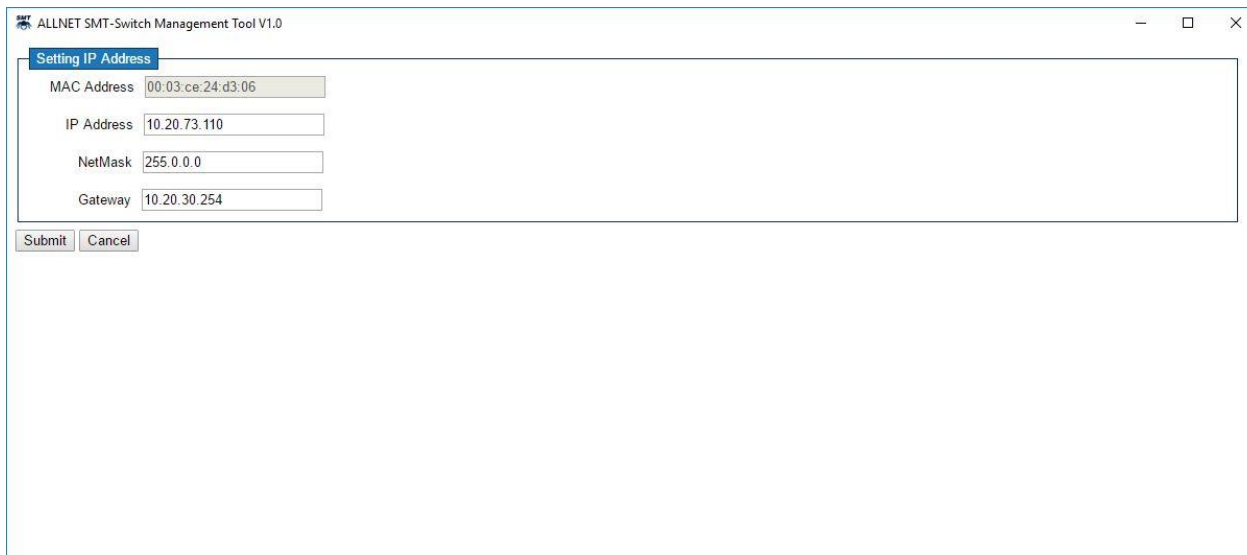
E. IP Address: This field displays the IP address of the switch. You can click the URL to access the Web-based configuration page of the switch

F. Account: Here you can enter the login user name of the switch. The default name is "admin".

G. Password: Here you can enter the login password of the switch. The default password is "admin".

H. IP Setting: You can press the "Setting" button to change the IP settings of each switch. When this button is pressed, SMT-Spider switches to the IP setting page, as shown in the following figure:

SMT-Spider-Instruction



The screenshot shows a window titled "ALLNET SMT-Switch Management Tool V1.0". Inside, there is a section titled "Setting IP Address". This section contains four input fields: "MAC Address" with the value "00:03:ce:24:d3:06", "IP Address" with "10.20.73.110", "NetMask" with "255.0.0.0", and "Gateway" with "10.20.30.254". Below these fields are two buttons: "Submit" and "Cancel".

Settings IP address

☒ MAC Address: This field displays the MAC address of the switch. The value of this field can not be changed.

☒ IP Address: The IP address of the switch. Here you can change the IP address of the switch.

☒ NetMask: The subnet mask of the switch. Here you can change the subnet mask of the switch

☒ Gateway: The gateway of the switch. Here you can change the gateway of the switch

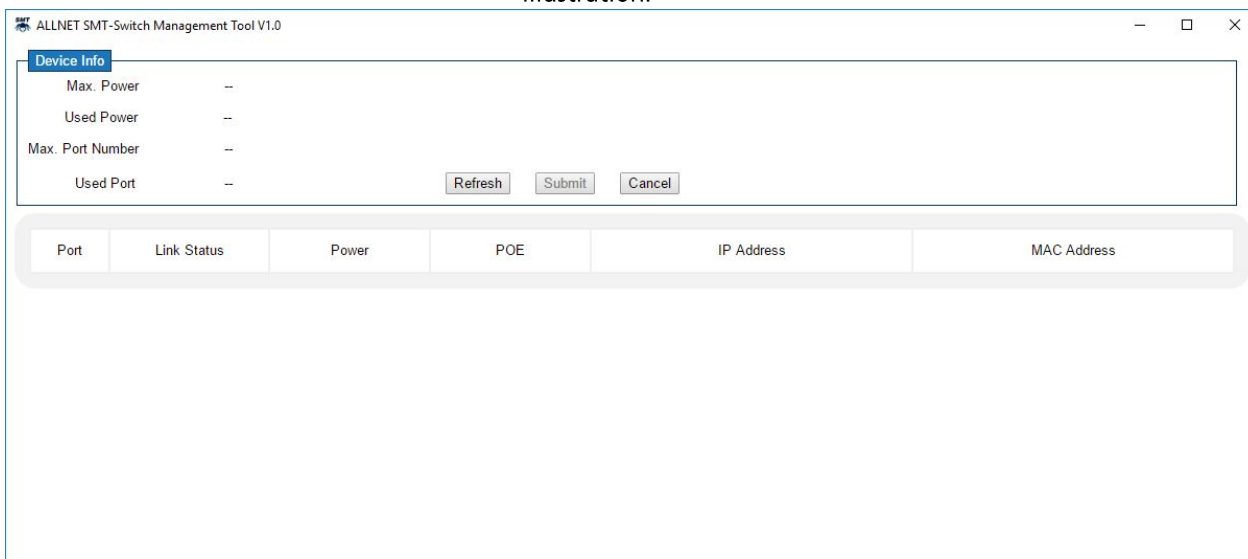
buttons

☒ Submit: Press this button to save the settings set here. SMT-Spider switches back to the search results page.

☒ Cancel: Press this button to cancel the setting set here. SMT-Spider switches back to the search results page.

SMT-Spider-Instruction

- I. Status/setting: You can press the setting button to change or display the Poe settings of each switch. When this button is pressed, SMT-spider switches to the Poe Settings page as shown in the following illustration:



ALLNET SMT-Switch Management Tool V1.0

Device Info

Max. Power --

Used Power --

Max. Port Number --

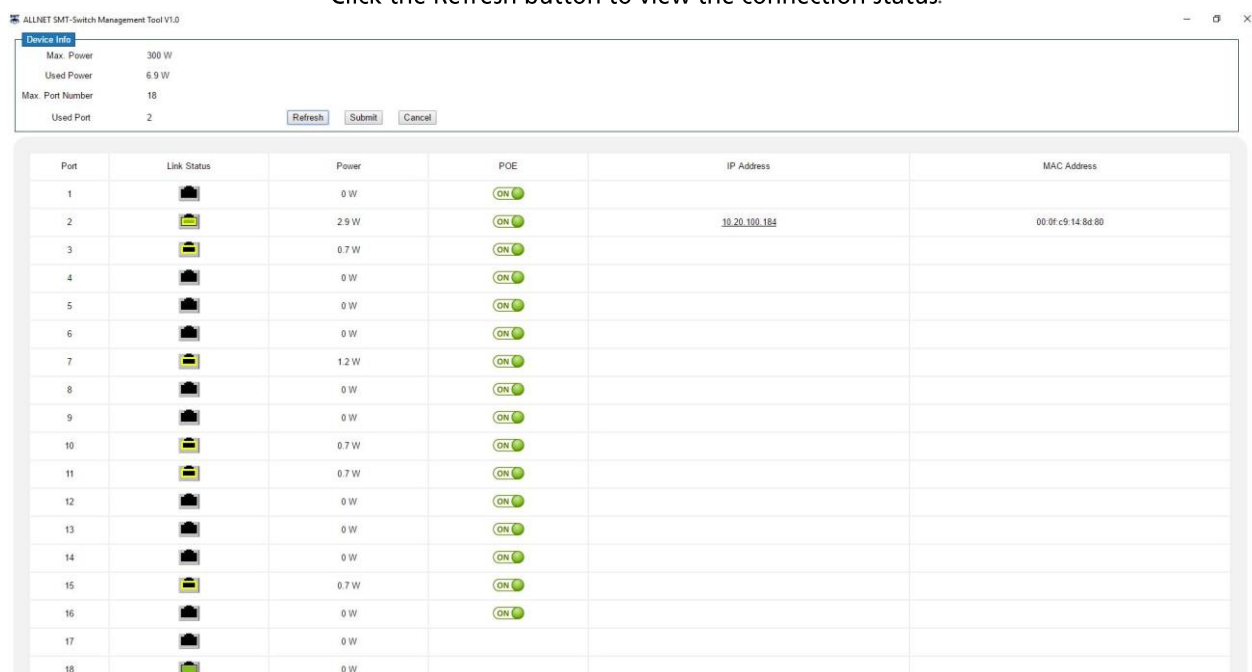
Used Port --

Refresh Submit Cancel

Port	Link Status	Power	POE	IP Address	MAC Address
------	-------------	-------	-----	------------	-------------

II.

Click the Refresh button to view the connection status.



ALLNET SMT-Switch Management Tool V1.0

Device Info

Max. Power 300 W

Used Power 6.9 W

Max. Port Number 18

Used Port 2

Refresh Submit Cancel

Port	Link Status	Power	POE	IP Address	MAC Address
1		0 W	ON		
2		2.9 W	ON	10.20.100.184	00:0f:c9:14:8d:80
3		0.7 W	ON		
4		0 W	ON		
5		0 W	ON		
6		0 W	ON		
7		1.2 W	ON		
8		0 W	ON		
9		0 W	ON		
10		0.7 W	ON		
11		0.7 W	ON		
12		0 W	ON		
13		0 W	ON		
14		0 W	ON		
15		0.7 W	ON		
16		0 W	ON		
17		0 W			
18		0 W			











Device Info

- Max power: This field shows the MAC address of the switch. The value of this field cannot be changed.
- used power: The current Poe power is displayed
- Max Port number: HDie Total port Count of the switch, including non-Poe ports.
- used Port: The number of ports currently in use.

Buttons

- Refresh: Updates the page and displays the new statuses.
- Submit: Press this button to save the settings you have set here. SMT-Spider switches back to the search results page.
- Cancel: Press this button to discard the setting you have set here. SMT-Spider switches back to the search results page.





SMT-Spider-Instruction

Port	Link Status	Power	POE	IP Address	MAC Address
1		0 W			
2		2.9 W		10.20.100.184	00:0f:c9:14:8d:80
3		0.7 W			
4		0 W			
5		0 W			

Poe Status Table

☐ Port: Port number.

☐ Link Status: This field shows the connection status for each port. The connection status of each port is indicated by different icons:

Link Status	Beschreibung
	No device connected to port.
	A network device is connected to the port. This port has only data link, not Poe.
	A network device is connected to the port. This port has Poe and data link
	A device is connected to the port. This port has only Poe, no data connection

☐ Power: The wattage of the Poe power is displayed.

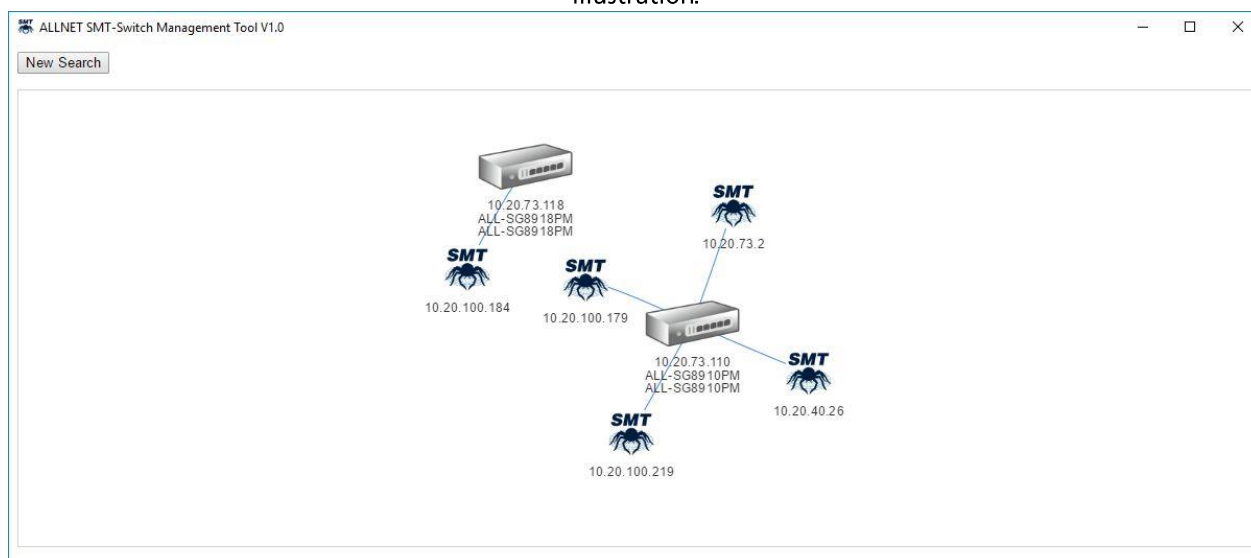
☐ Poe: This symbol allows you to enable/disable the Poe function on a specific port. To activate/deactivate the POE function, click on the icon and press the Submit button.

☐ IP Address: This field displays the IP addresses of the network device connected to the switch. You can click the URL to access the configuration Web page for each network device, if it exists.

☐ MAC Address: This field shows the MAC address of the network device connected to the switch.

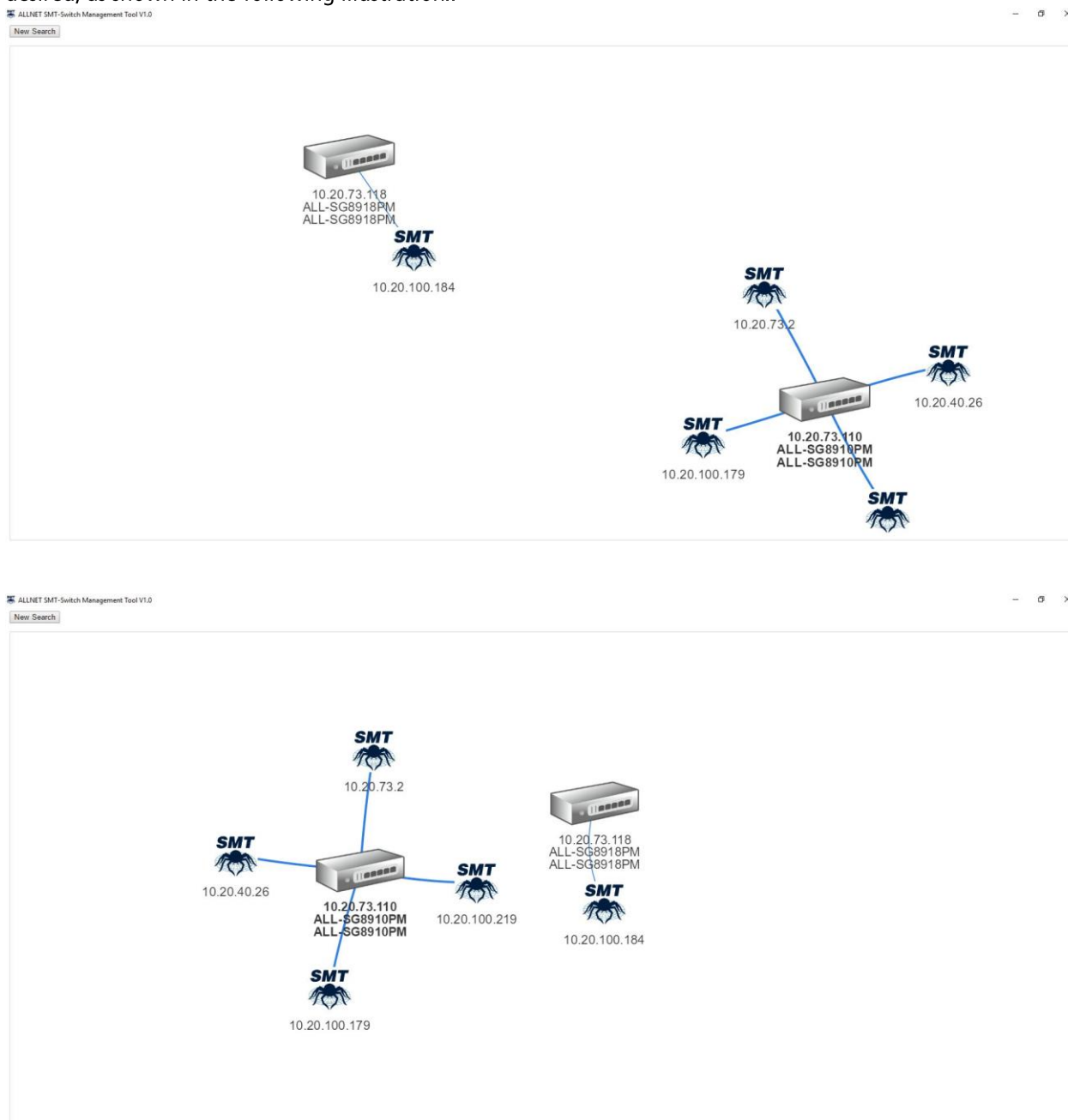
J. Search: Press this button to start a new search.

K. Display Topology: Press this button to view the topology of your network, as shown in the following illustration:



SMT-Spider-Instruction

You can easily change the appearance of the topology as desired by simply clicking and dragging the topology as desired, as shown in the following illustration.:



You can enter the configuration Web page of each switch or network device by clicking the icon, or return to the search results page by clicking the new Search button at the top left.