



**Gigabit Router with 1x PD WAN
and 4x PoE LAN 802.3af/at**

ALL-PR4014P



USER MANUAL

Table of Contents

Before Starting	4
Intended Readers	5
Icons for Note, Caution, and Warning	5
Chapter 1: Product Overview	6
1.1. Product Brief Description	7
1.2. Product Specification	8
1.3. Hardware Description	10
1.4. Hardware Installation	13
Chapter 2: Preparing for Management	14
2.1. Preparation for Web Interface	15
Chapter 3: Web Management	17
3.1. Web Management - Overview	18
3.2. Web Management	19
3.2.1. Web Management – Operation Mode	19
3.2.2. Web Management – Internet Settings	20
3.2.2.1. Internet Settings – WAN (Only Available in Gateway Mode)	20
3.2.2.2. Internet Settings – LAN	27
3.2.2.3. Internet Settings – DHCP Clients	31
3.2.2.4. Internet Settings – Routing (Only Available in Gateway Mode)	32
3.2.2.5. Internet Settings – VPN Pass Through	33
3.2.2.6. Internet Settings – QoS (Only Available in Gateway Mode)	34
3.2.2.7. Internet Settings – IPv6	37
3.2.3. Web Management – Firewall (Only Available in Gateway Mode)	39
3.2.3.1. Firewall – MAC/IP/Port Filtering (Only Available in Gateway Mode)	39
3.2.3.2. Firewall – System Security (Only Available in Gateway Mode)	41
3.2.3.3. Firewall – Content Filtering (Only Available in Gateway Mode)	42
3.2.3.4. Firewall – Port Forwarding (Only Available in Gateway Mode)	43
3.2.3.5. Firewall – Port Trigger (Only Available in Gateway Mode)	44
3.2.3.6. Firewall – DMZ (Only Available in Gateway Mode)	45
3.2.4. Web Management – Administration	46
3.2.4.1. Administration – Management	46
3.2.4.2. Administration – Upload Firmware	48
3.2.4.3. Administration – Settings Management	49
3.2.4.4. Administration – Status	50
3.2.4.5. Administration – Statistics	50

Table of Contents

3.2.4.6. Administration – PoE.....51

Appendix A: Product Safety52

Before Starting

In Before Starting:

This section contains introductory information, which includes:

- **Intended Readers**
- **Icons for Note, Caution, and Warning**

Before Starting

Intended Readers

This manual provides information regarding to all the aspects and functions needed to install, configure, use, and maintain the product you've purchased.

This manual is intended for technicians who are familiar with in-depth concepts of networking management and terminologies.

Icons for Note, Caution, and Warning

To install, configure, use, and maintain this product properly, please pay attention when you see these icons in this manual:



A **Note** icon indicates important information which will guide you to use this product properly.



A **Caution** icon indicates either a potential for hardware damage or data loss, including information that will guide you to avoid these situations.



A **Warning** icon indicates potentials for property damage and personal injury.

Chapter 1:

Product Overview

In Product Overview:

This section will give you an overview of this product, including its feature functions and hardware/software specifications.

- **Product Brief Description**
- **Product Specification**
- **Hardware Description**
- **Hardware Installation**

1.1. Product Brief Description

Introduction

This NAT router is a 4 Gigabit PSE (Power Source Equipment) LAN ports & 1 Gigabit (Powered Device) WAN port PoE+ NAT router that is designed for small or medium network environment to strengthen its network connection. This product is compact size, making it ideal for Desktop users with limited space.

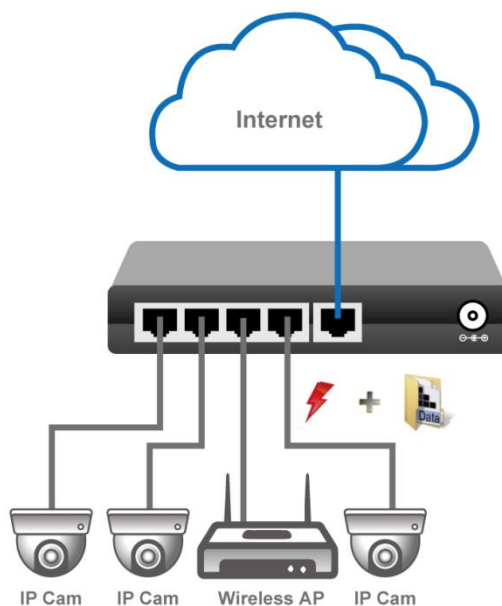
IEEE 802.3at Power over Ethernet (PoE) PSE & PD Ports

This NAT router features 4-port PoE+ IEEE 802.3at supplying up to 30 watts per port. This product can convert standard 100~240V/AC power into low-voltage DC that runs over existing LAN cable to power up IEEE 802.3at compliant network accessories. By adding this NAT router to existing networking, installing networking products such as Access Points and IP cameras can be easily managed and set up. Wireless device deployments are easily located with available power outlets and network administrators don't need to use heavy AC power adapters anymore.

When connected with a PSE to its PD WAN port, this NAT router can be power without its external power adaptor, therefore eliminating the need to find a power outlet for the router.

Various Type of WAN Connection

This router can accommodate different types of WAN connection provided by different ISPs (Internet Service Provider). The WAN connection types that this router supports include static IP (with a set of IP addresses provided by your ISP), dynamic IP (with cable modem), PPPoE (for DSL modem), L2TP and PPTP (both VPN connections).



1.2. Product Specification

Interface		
10M/100M/1000M RJ45 PSE LAN Ports		4
10M/100M/1000M RJ45 PD WAN Ports		1
System Capacity & Performance		
Processor		880 MHz, Dual-Core
L2 Cache		256 KB L2 Cache shared by Dual-Core
Key Software Features		
Operation Mode		Bridge/Gateway
Hardware NAT	Wired Speed	2Gbps
	L2 bridge	•
	IPv4 routing, NAT, NAPT	•
	IPv6 routing, DS-Lite, 6RD, 6to4	•
Accessible MAC Address Table Size		2K MAC entries with auto aging & learning capabilities
WAN	Static/Dynamic IP	•
	PPPoE	•
	PPTP/L2TP	•
VPN Pass-through		IPSec, L2TP, PPTP
QoS Features	SP (Strict-Priority), WFQ (Weighted Fair Queue), and SP+WFQ latency scheduler	•
	Max/Min Bandwidth Scheduler	•
	Ingress/Egress Rate Control	•
		•
Firewall	MAC/IP/Port Filtering	•
	Content Filtering	•
	Port Forwarding/Virtual Server	•
	Port Trigger	•
	DMZ	•
IPv4 and IPv6 multicast frames hardware forwarding		•
Jumbo Frame		9K
PoE		
IEEE 802.3 af/at		IEEE 802.3 af/at
Remote PoE On/Off per Port		•
Number of PSE LAN Ports		4
PD Alive		•
PD WAN Port		1 PD WAN Port
Mechanical		
Power Supply		External Power Adaptor or powered by PD WAN Port
Input Power		AC100~240V, 50/60Hz
LED		Power, PoE In/Out, Link/Act
Button		Reset Button
Operating Temperature		0°C to 50°C
Operating Humidity		90% (non-condensing)
Certification		CE, FCC

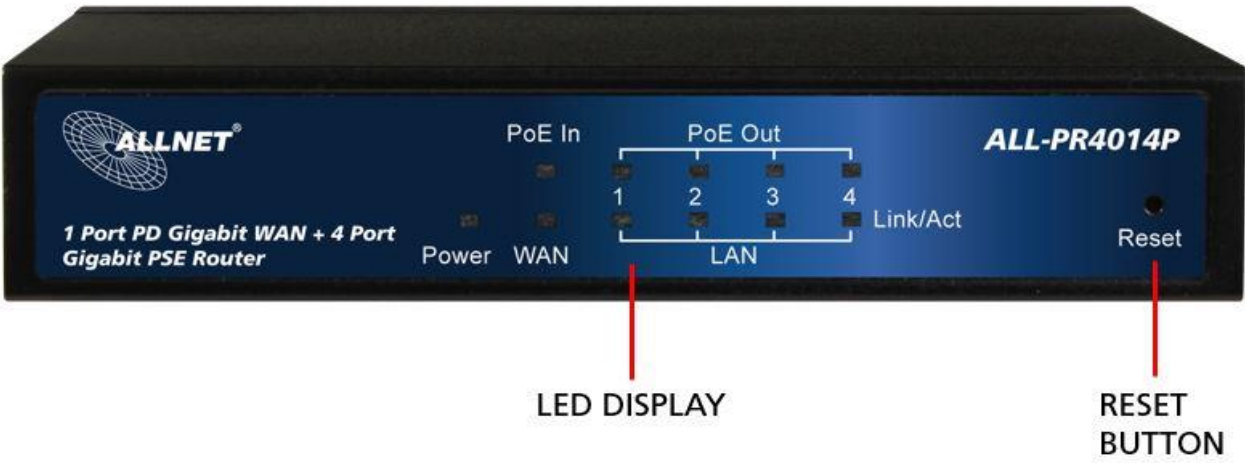
Standard	
IEEE 802.3 – 10BaseT	•
IEEE 802.3u - 100BaseTX	•
IEEE 802.3ab - 1000BaseT	•
IEEE 802.3af Power over Ethernet (PoE)	•
IEEE 802.3at Power over Ethernet (PoE+)	•
IEEE 802.3az - Energy Efficient Ethernet (EEE)	•
IEEE 802.3x - Flow Control	•
IEEE 802.1p - Class of Service	•

1.3. Hardware Description

This section mainly describes the hardware of this NAT router and gives a physical and functional overview.

Front Panel

The LED Indicators are located on the front panel.



LED Indicators

The LED Indicators present real-time information of systematic operation status. The following table provides description of LED status and their meaning.

LED	Status	Description
Power	On	Power on
	Off	Power off
PoE In	On	The NAT router is powered by PoE
	Off	The NAT router is off or not powered by PoE
WAN	On	WAN port Linked
	Flashing	Data activating
	Off	No device is attached
Link/ ACT	On	Linked
	Flashing	Data activating
	Off	No device is attached
PoE	On	Port is linked to Powered Device
	Off	No Powered Device is connected

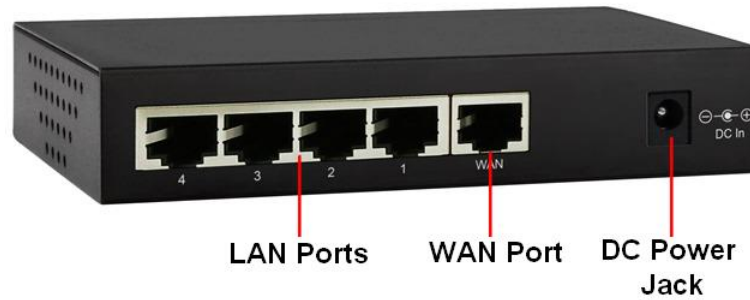
Chapter 1: Product Overview

Hardware Description

The reset button is located in the front panel as well. To reset all settings back to default value, please press and hold the reset button for 10 seconds.

Rear Panel

The LAN ports, WAN port and the DC power jack are located in the rear panel of the NAT router, as shown in the figure down below.



1.4. Hardware Installation

To install this NAT router, please place it on a large flat surface with a power socket close by. This surface should be clean, smooth, and level. Also, please make sure that there is enough space around this router for RJ45 cable, power cord and ventilation.

Ethernet cable Request

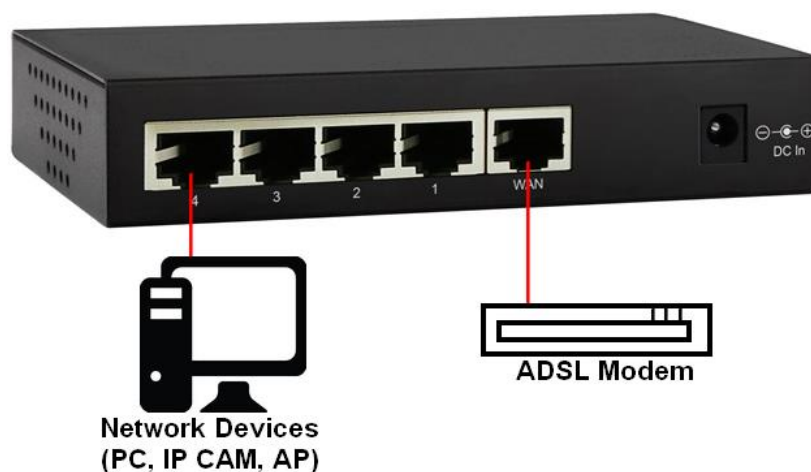
The wiring cable types are as below:

- 10 Base-T: 2-pair UTP/STP CAT. 3, 4, 5 cable, EIA/TIA-568 100-ohm (Max. 100m)
- 100 Base-TX: 2-pair UTP/STP CAT. 5 cable, EIA/TIA-568 100-ohm (Max. 100m)
- 1000 Base-T: 4-pair UTP/STP CAT. 5 cable, EIA/TIA-568 100-ohm (Max. 100m)
- PoE: To delivery power properly, it is recommended to use CAT 5e and CAT 6 cable. Ethernet cables of higher qualities can reduce the power lost during transmission.

For more information regarding to the product safety and maintenance guide, please refer to **Appendix A: Product Safety**.

Please connect your ADSL modem (or your Internet access device) to the router's WAN port. The LAN ports are for connecting to your network devices such as PC, IP CAM, or access points.

If you're connecting the router's WAN port to a PSE (Power Source Equipment), the router will be powered by the PSE instead of the DC power adaptor.



Chapter 2:

Preparing for Management

In Preparing for Management:

This section will guide your how to manage this product via management web page.

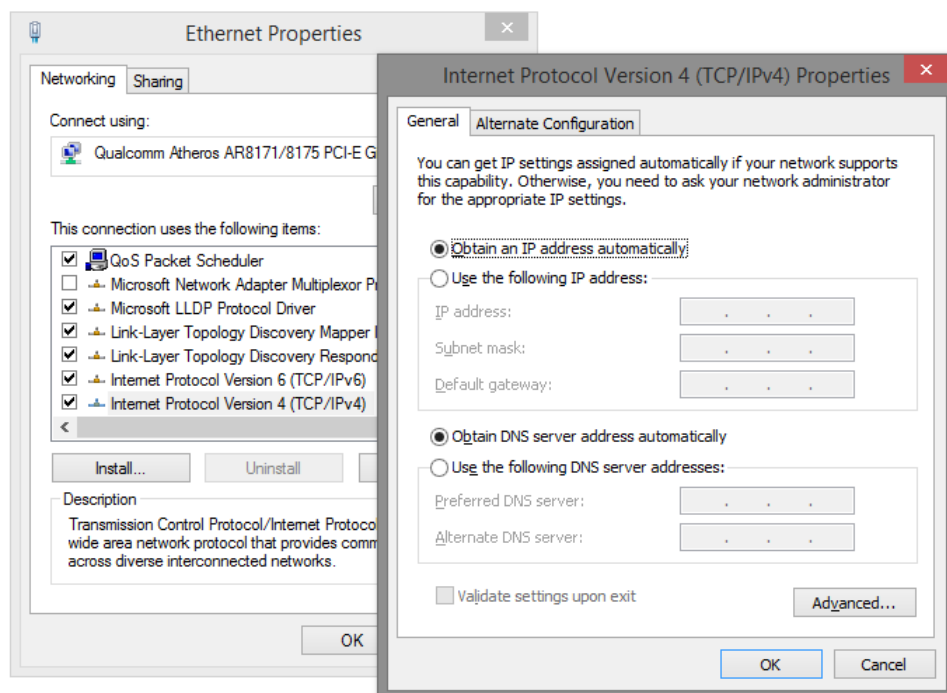
- **Preparation for Web Interface**

2.1. Preparation for Web Interface

The management web page allows you to use a web browser (such as Microsoft IE, Google Chrome, or Mozilla Firefox) to configure and monitor the router from anywhere on the network.

Before using the web interface to manage your router, please verify that your switch and your PC are on the same network. Please follow the steps down below to configure your PC properly:

1. Verify that the network interface card (NIC) of your PC is operational and properly installed, and that your operating system supports TCP/IP protocol.
2. Connect your PC with the switch via an RJ45 cable.
3. In default setting, the router is set to the "Gateway" mode. Under this mode, the router will assign IP addresses to devices that are connected to it. Please make sure that the setting of your PC's NIC is set to "Obtain an IP address automatically" as shown in the figure down below.



Chapter 2: Preparing for Management

Preparation for Web Interface

4. The router will assign a set of IP address to your PC. Please check the network connection detail information of your PC, and write down the IPv4 Default Gateway IP address. The default should be "192.168.2.1".
5. Launch the web browser (IE, Firefox, or Chrome) on your PC.
6. Type the default gateway IP address you've written down in step 4 in the web browser's URL field, and press Enter.
7. The web browser will prompt you to log in. The default username/password for the configuration web page is **admin/admin**.

Chapter 3:

Web Management

In Web Management:

As mentioned in *Chapter 2.1. Preparation for Web Interface*, This router provides a web-based management interface. You can make all settings and monitor system status with this management web page.

Configuration/Monitor options included in the management web page can be divided into the following 4 categories, which will be discussed in detail in this chapter:

- **Web Management – Operation Mode**
- **Web Management – Internet Settings**
- **Web Management – Firewall**
- **Web Management – Administration**

3.1. Web Management - Overview

This router's setting options can be divided into four main categories:

- **Operation Mode:** Here you can set the router to work under different modes. The modes available here include Bridget mode and Gateway mode.
- **Internet Settings:** This section of settings allows you to set WAN and LAN, as well as other settings regarding to network connection.
- **Firewall:** Firewall section allows you to make settings regarding to the router's firewall function, thus securing your network.
- **Administration:** This section contains settings regarding to the router's system, including system password, updating firmware, system reboot and reset all settings back to factory default.

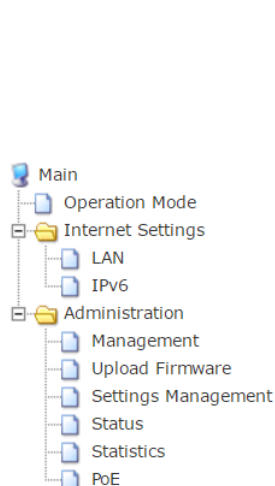
The following section will discuss all the functions in detail.

3.2. Web Management

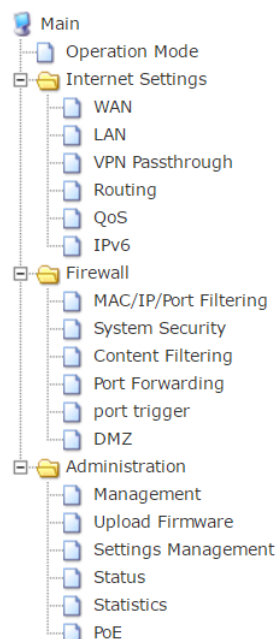
3.2.1. Web Management – Operation Mode

This router can run under two different modes, which are:

- **Bridge:** All ports are bridged into one single bridge interface, which means the router works as a switch, connecting all network devices together in a LAN network. Devices connected to the router running under Bridge mode won't acquire IP addresses via the router.
- **Gateway:** One of the ports will work as the WAN port and connect to the Wide Area Network (Internet), while other ports will work as LAN ports. Devices connected to the router running under Gateway mode will acquire IP addresses via the router.



Function Menu under Bridge Mode



Function Menu under Gateway Mode

As shown in the figures above, the function menu will change according to the router's running mode. Some of the functions available in the Gateway mode are not available in the router's Bridge mode.

Buttons

- **Apply:** Apply and save all the settings you've made on this page.
- **Reset:** Discard the setting you've made here.

3.2.2. Web Management – Internet Settings

3.2.2.1. Internet Settings – WAN (Only Available in Gateway Mode)

Here you can set the WAN connection for your router. Please note that this function is only available in router’s Gateway mode.

This router supports the following WAN connection:

- **Static Mode (Fixed IP):** The ISP (Internet Service Provider) provides a fixed set of IP address.
- **DHCP (Auto Config):** The router will acquire a set of IP address automatically via a DHCP server that’s connected to the router’s WAN port.
- **PPPoE (ADSL):** PPPoE stands for Point-to-Point Protocol Over Ethernet. ISP will provide you a set of account and password for connecting to the Internet.
- **L2TP:** Layer 2 Tunneling Protocol, a tunneling protocol used for virtual private networks (VPNs) and can work as Internet service provided by ISPs.
- **PPTP:** Point-to-Point Tunneling Protocol, another protocol used for virtual private networks, and can work as Internet service provided by ISPs.

Configuration web page will change according to the type of the WAN connection you’ve chosen.

Static Mode (Fixed IP)

Static Mode (fixed IP) ▾

Static Mode	
IP Address	192.168.2.195
Subnet Mask	255.255.240.0
Default Gateway	192.168.1.1
Primary DNS Server	192.168.1.1
Secondary DNS Server	192.168.1.1
MAC Address Clone	
Enabled	Disable ▾

ApplyCancel

IP Address

The fixed IP address for the router’s WAN connection interface.

Subnet Mask

The subnet mask for the router’s WAN connection interface.

Default Gateway

The gateway for the router’s WAN connection interface.

Primary/Secondary DNS Server

The primary/secondary DNS (Domain Name Server) IP address.

MAC Address Clone

Some ISPs only provide Internet service to a certain set of MAC address. You can input the MAC address manually or press the “Fill My MAC” button to copy the MAC address of your PC to the router.

Buttons

- **Apply:** Apply and save all the settings you’ve made on this page.
- **Cancel:** Discard all the settings you’ve made.

DHCP (Auto Config)

DHCP (Auto Config) ▾	
DHCP Mode	
Host Name (optional)	<input type="text"/>
MAC Address Clone	
Enabled	Enable ▾
MAC Address	<input type="text" value="00:00:00:00:00:00"/> <input type="button" value="Fill my MAC"/>
<input type="button" value="Apply"/> <input type="button" value="Cancel"/>	

Host Name

Here you can input the network host name. This field is optional and not a necessity.

MAC Address Clone

Some ISPs only provide Internet service to a certain set of MAC address. You can input the MAC address manually or press the “Fill My MAC” button to copy the MAC address of your PC to the router.

Buttons

- **Apply:** Apply and save all the settings you’ve made on this page.
- **Cancel:** Discard all the settings you’ve made.

PPPoE

PPPOE (ADSL) ▾	
PPPoE Mode	
User Name	pppoe_user
Password
Verify Password
Operation Mode	Keep Alive ▾
	On demand Mode: Idle Time 5 minutes
MAC Address Clone	
Enabled	Enable ▾
MAC Address	00:00:00:00:00:00 Fill my MAC
Apply Cancel	

User Name

The user name that the ISP provides.

Password/Verify Password

The password that the ISP provides. After inputting the password, please type in the password again in the "Verify Password" field.

Operation Mode

You can set the PPPoE operation mode via the scroll-down menu. The operation modes available include:

- **Keep Alive:** The router will keep the PPPoE connection, never disconnect.
- **On Demand:** The router will only make PPPoE connection when Internet connection is required. You can set the idle time here as well. The router will disconnect if Internet connection is not used after the set amount of time.
- **Manual:** The router will make PPPoE connection upon requested by the user manually.

MAC Address Clone

Some ISPs only provide Internet service to a certain set of MAC address. You can input the MAC address manually or press the "Fill My MAC" button to copy the MAC address of your PC to the router.

Buttons

- **Apply:** Apply and save all the settings you've made on this page.
- **Cancel:** Discard all the settings you've made.

L2TP

L2TP ▾	
L2TP Mode	
L2TP Server IP Address	<input type="text" value="l2tp_server"/>
User Name	<input type="text" value="l2tp_user"/>
Password	<input type="password" value="....."/>
Address Mode	Static ▾
IP Address	<input type="text" value="192.168.1.1"/>
Subnet Mask	<input type="text" value="255.255.255.0"/>
Default Gateway	<input type="text" value="192.168.1.254"/>
Operation Mode	Keep Alive ▾
	Keep Alive Mode: Redial Period <input type="text" value="60"/> seconds
MAC Address Clone	
Enabled	Disable ▾
<input type="button" value="Apply"/> <input type="button" value="Cancel"/>	

L2TP Server IP Address

The IP address of L2TP server.

User Name

The user name of the L2TP server.

Password

The password of the L2TP server.

Address Mode

This scroll-down menu allows you to set the mode for the router to acquire its WAN IP address.

- **Static:** The router will use the IP address settings you've made down below.
- **Dynamic:** The router will acquire a set of IP address from L2TP server.

Operation Mode

You can set the operation mode via the scroll-down menu.

- **Keep Alive:** The router will keep the L2TP connection, never disconnect.
- **Manual:** The router will make L2TP connection upon requested by the user manually.

MAC Address Clone

Some ISPs only provide Internet service to a certain set of MAC address. You can input the MAC address manually or press the "Fill My MAC" button to copy the MAC address of your PC to the router.

Buttons

- **Apply:** Apply and save all the settings you've made on this page.

- **Cancel:** Discard all the settings you've made.

PPTP

PPTP	
PPTP Mode	
PPTP Server IP Address	<input type="text" value="pptp_server"/>
User Name	<input type="text" value="pptp_user"/>
Password	<input type="password" value="....."/>
Address Mode	<input type="text" value="Static"/>
IP Address	<input type="text" value="192.168.1.1"/>
Subnet Mask	<input type="text" value="255.255.255.0"/>
Default Gateway	<input type="text" value="192.168.1.254"/>
Operation Mode	<input type="text" value="Keep Alive"/>
Keep Alive Mode: Redial Period <input type="text" value="60"/> seconds	
MAC Address Clone	
Enabled	<input type="text" value="Disable"/>
<input type="button" value="Apply"/> <input type="button" value="Cancel"/>	

PPTP Server IP Address

The IP address of PPTP server.

User Name

The user name of the PPTP server.

Password

The password of the PPTP server.

Address Mode

This scroll-down menu allows you to set the mode for the router to acquire its WAN IP address.

- **Static:** The router will use the IP address settings you've made down below.
- **Dynamic:** The router will acquire a set of IP address from PPTP server.

Operation Mode

You can set the operation mode via the scroll-down menu.

- **Keep Alive:** The router will keep the PPTP connection, never disconnect.
- **Manual:** The router will make PPTP connection upon requested by the user manually.

MAC Address Clone

Some ISPs only provide Internet service to a certain set of MAC address. You can input the MAC address manually or press the "Fill My MAC" button to copy the MAC address of your PC to the router.

Buttons

- **Apply:** Apply and save all the settings you've made on this page.

- **Cancel:** Discard all the settings you've made.

3.2.2.2. Internet Settings – LAN

LAN Interface Setup	
Hostname	
IP Address	10.10.10.254
Subnet Mask	255.255.255.0
LAN2	<input checked="" type="radio"/> Enable <input type="radio"/> Disable
LAN2 IP Address	
LAN2 Subnet Mask	
MAC Address	00:03:CE:25:7A:68
DHCP Type	Server
DHCP Start IP	10.10.10.100
DHCP End IP	10.10.10.200
DHCP Subnet Mask	255.255.255.0
DHCP Primary DNS	10.10.10.251
DHCP Secondary DNS	168.95.1.1
DHCP Default Gateway	10.10.10.254
DHCP Lease Time	86400
Statically Assigned	MAC: IP:
Statically Assigned	MAC: IP:
Statically Assigned	MAC: IP:
802.1d Spanning Tree	Enable
LLTD	Disable
IGMP proxy	Disable
UPNP	Enable
Router Advertisement	Disable
DNS proxy	Disable
Apply Cancel	

Host Name

The host name of the network.

IP Address

The IP address of the router.

Subnet Mask

The subnet mask IP address of the router.

LAN 2

Enable the second LAN on this router.

LAN 2 IP Address

LAN 2 IP address.

LAN 2 Subnet Mask

The subnet mask IP address of LAN 2.

MAC Address

The MAC address of the router.

Chapter 3: Web Management

Internet Settings - LAN

DHCP Type

You can enable or disable the DHCP server here with the scroll-down menu.

- **Disable:** Disable DHCP server. Devices connected to the router won't acquire IP address from the router.
- **Server:** Enable DHCP server. Devices connected to the router will acquire IP address from the router.

DHCP Start/End IP

The start/end IP address of the DHCP IP pool. The router will assign IP addresses starting from the DHCP Start IP.

DHCP Subnet Mask

The subnet mask IP address of DHCP.

DHCP Primary/Secondary DNS

The first and second DNS (Domain Name Server) for the router.

DHCP Default Gateway

The default gateway IP address for the DHCP server.

DHCP Lease Time

The lease time for the DHCP IP lease period.

Statically Assigned

Here you can bind a device to a certain IP address. Input the MAC address of the network device and the IP address that you would like to assign to. You can set up to 3 sets here.

802.1d Spanning Tree

Spanning tree is a protocol that will create a loop-free network. You can enable Spanning Tree here with the scroll-down menu.

LLTD

LLTD stands for Link Layer Topology Discovery, a protocol for network topology discovering.

IGMP Proxy

IGMP stands for Internet Group Management Protocol, a protocol for reducing video/audio streaming traffic load.

UPnP

UPnP stands for Universal Plug-n-Play, a protocol that allows all network devices to discover all devices on the network.

Router Advertisement

Router Advertisement allows the router to send advertisement packets for IPv6

network.

Chapter 3: Web Management

Internet Settings - LAN

DNS Proxy

When DNS proxy is enabled, system will relay DNS requests to the currently configured DNS server, and reply as a DNS resolver to the client devices on the network.

Buttons

- **Apply:** Apply and save all the settings you've made on this page.
- **Cancel:** Discard all the settings you've made.

3.2.2.3. Internet Settings – DHCP Clients

DHCP Clients				
Hostname	MAC Address	IP Address	Expires in	OS of Device
Lin_Writer	96:1B:D6	10.10.10.100	23:59:54	Microsoft Windows 8

Here the router will display all DHCP clients on the network.

Host Name

The host name of the network device.

MAC Address

The MAC address of the network device.

IP Address

The IP address of the router.

Expires in

The DHCP lease expire time of the DHCP client.

OS of Device

The operating system of the network device (if the network device is a PC).

3.2.2.4. Internet Settings – Routing (Only Available in Gateway Mode)

Static Routing Settings

You may add or remove Internet routing rules here.

Add a routing rule	
Destination	<input type="text"/>
Host/Net	Host <input type="button" value="v"/>
Gateway	<input type="text"/>
Interface	LAN <input type="button" value="v"/> <input type="text"/>
Comment	<input type="text"/>

Static routing allows you to route two networks of different network segment together.

Destination

The destination IP network or host address of this route.

Host/Net

This scroll-down menu allows you to select the static route as Host or Net.

Subnet Mask (When set to Net)

The subnet mask of the static route.

Gateway

The gateway of the static route.

Interface

The interface type of the static route. The interface types available here include LAN, WAN, and Custom.

Comment

Side note for the static route.

Buttons

- **Apply:** Apply and save all the settings you've made on this page.
- **Cancel:** Discard all the settings you've made.

3.2.2.5. Internet Settings – VPN Pass Through

VPN Pass Through	
L2TP passthrough	Disable ▾
IPSec passthrough	Disable ▾
PPTP passthrough	Disable ▾

VPN Pass Through function allows VPN data stream to pass through the router, allowing devices connected to the router to communicate with other devices not in the LAN network via VPN.

L2TP Pass Through

Enable L2TP pass through.

IPSec Pass Through

Enable IPSec pass through.

PPTP Pass Through

Enable PPTP pass through.

Buttons

- **Apply:** Apply and save all the settings you've made on this page.
- **Cancel:** Discard all the settings you've made.

3.2.2.6. Internet Settings – QoS (Only Available in Gateway Mode)

Quality of Service Settings

You may setup rules to provide Quality of Service guarantees for specific applications.

QoS Setup	
Quality of Service	Disable
Upload Bandwidth:	User defined Bits/sec
Download Bandwidth:	User defined Bits/sec
QoS Type:	AUTO QoS
QoSModel:	DRR
Reserved Bandwidth:	0% (10% is recommended)
<input type="button" value="Submit"/>	

QoS stands for Quality of Service. The router will regulate the network transmitting rate according to the settings you've made here.

Quality of Service

Here you can enable/disable QoS function or set the QoS type.

- **Disable:** Disable QoS function.
- **Enable – Bidirection:** Enable QoS function in bidirection mode.
- **Enable – Upload QoS Only:** Enable QoS function for uploading data stream.
- **Enable – Download QoS Only:** Enable QoS function for downloading data stream.

The setting web page will change according to the QoS setting you've enabled the QoS.

Quality of Service Settings

You may setup rules to provide Quality of Service guarantees for specific applications.

QoS Setup	
Quality of Service	Enable - Bidirection
Upload Bandwidth:	User defined Bits/sec
Download Bandwidth:	User defined Bits/sec
QoS Type:	AUTO QoS
<input type="button" value="Submit"/>	

Upload Bandwidth

Here you can set the bandwidth for uploading stream. You can set the bandwidth by the scroll-down menu or enter the bandwidth manually.

Download Bandwidth

Here you can set the bandwidth for downloading stream. You can set the bandwidth by the scroll-down menu or enter the bandwidth manually.

QoS Type

You can set the QoS type by the scroll-down menu. The QoS types include auto QoS or manual QoS. If you set the QoS type to manual QoS, the setting web page will change accordingly.

QoS Setup	
Quality of Service	Enable - Download QoS Only ▾
Upload Bandwidth:	User defined ▾ <input type="text"/> Bits/sec
Download Bandwidth:	User defined ▾ <input type="text"/> Bits/sec
QoS Type:	MANUAL QoS ▾
QoSModel:	DRR ▾
Reserved Bandwidth:	0% ▾ (10% is recommended)
QoS Download Settings	
Highest	Rate: 10% ▾ Ceil: 100% ▾
High	Rate: 10% ▾ Ceil: 100% ▾
Default	Rate: 10% ▾ Ceil: 100% ▾
Low	Rate: 10% ▾ Ceil: 100% ▾
<input type="button" value="Submit"/>	

QoS Model

Here you can set the QoS model with the scroll-down menu. The settings available here include:

- **DRR:** Deficit Round Robin.
- **SPQ:** Strict-Priority Queue.
- **DRR + SPQ:** A combination of ERR and SPQ.
- **Remark Only**

The setting web page will change according to the QoS model you've selected here.

DRR:

QoS Download Settings	
Highest	Rate: 10% ▾ Ceil: 100% ▾
High	Rate: 10% ▾ Ceil: 100% ▾
Default	Rate: 10% ▾ Ceil: 100% ▾
Low	Rate: 10% ▾ Ceil: 100% ▾
<input type="button" value="Submit"/>	

SPQ:

QoS Download Settings	
Highest	
High	
Default	
Low	
<input type="button" value="Submit"/>	

Chapter 3: Web Management

Internet Settings – QoS

DRR + SPQ:

QoS Download Settings			
Highest			
High			
Default	Rate: 10% ▾	Ceil: 100% ▾	
Low	Rate: 10% ▾	Ceil: 100% ▾	
<input type="button" value="Submit"/>			

Highest

Set the highest possible download bandwidth.

High

Set the high download bandwidth.

Default

Set the default download bandwidth.

Low

Set the minimal lowest download bandwidth.

Buttons

- **Submit:** Apply and save all the settings you've made on this page.

3.2.2.7. Internet Settings – IPv6

IPv6 Setup

IPv6 Connection Type	
IPv6 Operation Mode	Disable ▾
<div>Apply Cancel</div>	

IPv6 Operation Mode

The IPv6 operation mode. Modes here include:

- **Static IP Connection**
- **Tunneling Connection (6RD)**
- **Tunneling Connection (DS-Lite)**

The setting web page changes according to the operation mode you've chosen.

Static IP Connection

IPv6 Static IP Setup

LAN IPv6 Address / Subnet Prefix Length	<input type="text"/> / <input type="text"/>
WAN IPv6 Address / Subnet Prefix Length	<input type="text"/> / <input type="text"/>
Default Gateway	<input type="text"/>
<div>Apply Cancel</div>	

LAN IPv6 Address/Subnet Prefix Length

Here you can input the LAN IPv6 address and subnet prefix length.

WAN IPv6 Address/Subnet Prefix Length

Here you can input the WAN IPv6 address and subnet prefix length.

Default Gateway

Here you can input the default gateway in IPv6 format.

Tunneling Connection (6RD)

Tunneling Connection (6RD) Setup

ISP 6rd Prefix / Prefix Length	<input type="text"/> / <input type="text"/>
ISP Border Relay IPv4 Address	<input type="text"/>
<div>Apply Cancel</div>	

ISP 6rd Prefix/Prefix Length

Here you can input the ISP 6rd Prefix/Prefix length.

ISP Border Relay IPv4 Address

Here you can input the ISP border relay IPv4 address.

Tunneling Connection (DS-Lite)

Tunneling Connection (DS-Lite) Setup	
WAN IPv6 Address	<input type="text"/>
AFTR Server IPv6 Address	<input type="text"/>
Gateway IPv6 Address	<input type="text"/>

WAN IPv6 Address

Here you can input the IPv6 address for WAN port.

AFTR Server IPv6 Address

Here you can input the AFTR server's IPv6 address.

Gateway IPv6 Address

Here you can input the default gateway in IPv6 format.

Buttons

- **Apply:** Apply and save all the settings you've made on this page.
- **Cancel:** Discard all the settings you've made.

3.2.3. Web Management – Firewall (Only Available in Gateway Mode)

3.2.3.1. Firewall – MAC/IP/Port Filtering (Only Available in Gateway Mode)

MAC/IP/Port Filtering Settings

You may setup firewall rules to protect your network from virus, worm and malicious activity on the Internet.

Basic Settings	
MAC/IP/Port Filtering	Disable ▾
Default Policy -- The packet that don't match with any rules would be:	Dropped ▾
<input type="button" value="Apply"/> <input type="button" value="Reset"/>	

Basic Settings

MAC/IP/Port Filtering

Enable or disable MAC/IP/Port filtering function.

Default Policy

Set which action the router to take when a packet that doesn't match the filtering rules.

Buttons

- **Apply:** Apply and save all the settings you've made on this page.
- **Cancel:** Discard all the settings you've made.

IP/Port Filter Setting

IP/Port Filter Settings	
Mac address	<input type="text"/>
Dest IP Address	<input type="text"/>
Source IP Address	<input type="text"/>
Protocol	None ▾
Dest. Port Range	<input type="text"/> - <input type="text"/>
Src Port Range	<input type="text"/> - <input type="text"/>
Action	Drop ▾
Comment	<input type="text"/>

(The maximum rule count is 32.)

MAC Address

Input MAC address of a device here.

Dest./Source IP Address

The destination & source IP address.

Protocol

You can set the protocol for filtering rule here with this scroll-down menu.

Dest./Src. Port Range

Here you can input the range for destination and source port.

Action

Set which action the router to take when a packet that match the filtering rules.

Comment

Adding note for the filtering rule.

Buttons

- **Apply:** Apply and save all the settings you've made on this page.
- **Cancel:** Discard all the settings you've made.

IP/Port Filtering Rule Table

Current IP/Port filtering rules in system:									
No.	Mac Address	Dest IP Address	Source IP Address	Protocol	Dest Port Range	Source Port Range	Action	Comment	PktCnt
Others would be dropped.									-

This table lists all the IP/Port filtering rules.

Buttons

- **Delete Selected:** Delete the filtering rule that you've selected.
- **Reset:** Discard all the settings you've made.

3.2.3.2. Firewall – System Security (Only Available in Gateway Mode)

System Firewall Settings

You may configure the system firewall to protect itself from attacking.

Remote management	
Remote management (via WAN)	<input type="button" value="Enable"/>
Ping from WAN Filter	
Ping from WAN Filter	<input type="button" value="Disable"/>
Block Port Scan	
Block Port Scan	<input type="button" value="Disable"/>
Block SYN Flood	
Block Syn Flood	<input type="button" value="Disable"/>
Stateful Packet Inspection (SPI) Firewall	
SPI Firewall	<input type="button" value="Disable"/>

Remote Management

Enable this function to allow the user to access setting web page remotely via Internet.

Ping from WAN Filter

Enable this function so the router won't reply ping request via WAN connection.

Block Port Scan

Enable this function to block port scan.

Block SYN Flood

Enable this function to block SYN flood.

Stateful Packet Inspection (SPI) Firewall

Enable this function to enable stateful packet inspection firewall.

Buttons

- **Apply:** Apply and save all the settings you've made on this page.
- **Cancel:** Discard all the settings you've made.

3.2.3.3. Firewall – Content Filtering (Only Available in Gateway Mode)

Content Filter Settings

Webs Content Filter	
Filter:	<input type="checkbox"/> Proxy <input type="checkbox"/> Java <input type="checkbox"/> ActiveX
<input type="button" value="Apply"/> <input type="button" value="Reset"/>	

Webs URL Filter Settings

Current Webs URL Filters:	
No.	URL
<input type="button" value="Delete"/> <input type="button" value="Reset"/>	

Add a URL Filter:	
URL:	<input type="text"/>
<input type="button" value="Add"/> <input type="button" value="Reset"/>	

Webs Host Filter Settings

Current Website Host Filters:	
No.	Host(Keyword)
<input type="button" value="Delete"/> <input type="button" value="Reset"/>	

Add a Host(keyword) Filter:	
Keyword:	<input type="text"/>
<input type="button" value="Add"/> <input type="button" value="Reset"/>	

Web Content Filter

Here you can set the content of a website that will be blocked by the router.

Web URL Filter Settings

Here you can set the URLs that will be blocked by the router. Input the URL you would like to block, and press the Add button to add the new URL filtering rule.

Web Host Filter Setting

Here you can set the filtering keyword. Any website with the keyword will be blocked by the router.

Buttons

- **Add:** Adding a filtering rule.
- **Delete:** Delete the filtering rule that you've selected.
- **Apply:** Apply and save all the settings you've made on this page.
- **Reset:** Discard all the settings you've made.

3.2.3.4. Firewall – Port Forwarding (Only Available in Gateway Mode)

Port Forwarding

Port Forwarding

Disable ▾

IP Address

Port Range

Protocol

TCP&UDP ▾

Comment

(The maximum rule count is 32.)

Apply

Reset

Current Port Forwarding in system:

No.	IP Address	Port Range	Protocol	Comment
-----	------------	------------	----------	---------

Delete Selected

Reset

Port Forwarding

You can enable port forwarding here with this scroll-down menu. When enabled, the router will forward packets to a LAN IP when these packets are sent via the set port and protocol.

IP Address

The LAN IP address that the Internet packets will be forwarded to.

Port Range

The port range of the protocol.

Protocol

The protocols that will be forwarded, include UDP, TCP, and TCP&UDP.

Comment

Note for the port forwarding rule.

Current Port Forwarding in System

This table lists all the port forwarding rules currently set in the router.

Buttons

- **Apply:** Apply and save all the settings you’ve made on this page.
- **Delete Selected:** Deleting the selected port forwarding rule.
- **Reset:** Discard all the settings you’ve made.

3.2.3.5. Firewall – Port Trigger (Only Available in Gateway Mode)

Port Trigger	
Port Trigger	<input type="text" value="Disable"/>
Trigger Port Protocol	<input type="text" value="TCP"/>
Trigger Port	<input type="text"/>
Incoming Port Protocol	<input type="text" value="TCP"/>
Incoming Port	<input type="text"/>
Comment	<input type="text"/>

(The maximum rule count is 32.)

Current Port Trigger in system:					
No.	Trigger Protocol	Trigger Port	Incoming Protocol	Incoming port	Comment

Port Trigger

You can enable port trigger here with this scroll-down menu. When enabled, the router will forward packets sent via a certain port to another port.

Trigger Port Protocol

The triggering port protocol.

Trigger Port

The triggering port number.

Incoming Port Protocol

The incoming port protocol.

Incoming Port

The incoming port number.

Comment

Note for the port forwarding rule.

Current Port trigger in System

This table lists all the port trigger rules currently set in the router.

Buttons

- **Apply:** Apply and save all the settings you've made on this page.
- **Delete Selected:** Deleting the selected port trigger rule.
- **Reset:** Discard all the settings you've made.

3.2.3.6. Firewall – DMZ (Only Available in Gateway Mode)

DMZ Settings

You may setup a De-militarized Zone(DMZ) to separate internal network and Internet.

DMZ Settings	
DMZ Settings	Disable DMZ ▾
DMZ Address	<input type="text"/>
<input type="checkbox"/> Except TCP port 80	
<input type="button" value="Apply"/>	<input type="button" value="Reset"/>

DMZ Settings

You can enable the DMZ function with the scroll-down menu. When enabled, the router will allow all connection from the Internet to access a device on the LAN.

DMZ Address

The LAN IP address for the DMZ.

Buttons

- **Apply:** Apply and save all the settings you've made on this page.
- **Reset:** Discard all the settings you've made.

3.2.4. Web Management – Administration

3.2.4.1. Administration – Management

Administrator Settings	
Account	<input type="text" value="admin"/>
Password	<input type="password" value="....."/>
<input type="button" value="Apply"/> <input type="button" value="Cancel"/>	

Administrator Settings

Account

The login username for the setting web page.

Password

The login password for the setting web page.

Buttons

- **Apply:** Apply and save all the settings you've made on this page.
- **Cancel:** Discard all the settings you've made.

NTP Settings	
Current Time	<input type="text" value="Sun Jan 4 16:50:21 UTC 1970"/> <input type="button" value="Sync with host"/>
Time Zone:	<input type="text" value="(GMT-11:00) Midway Island, Samoa"/> ▼
NTP Server	<input type="text"/> ex: time.nist.gov ntp0.broad.mit.edu time.stdtime.gov.tw
NTP synchronization	<input type="checkbox"/>
<input type="button" value="Apply"/> <input type="button" value="Cancel"/>	

NTP Settings

Current Time

This field will display the current system time. You can press the "Sync with host" button to synchronize your PC's time to the router.

Time Zone

This scroll-down menu allows you to change the time zone of the system.

NTP Server

The URL or IP address for the NTP server.

Buttons

- **Apply:** Apply and save all the settings you've made on this page.
- **Cancel:** Discard all the settings you've made.

DDNS Settings	
Dynamic DNS Provider	None ▾
Account	<input type="text"/>
Password	<input type="password"/>
DDNS	<input type="text"/>

DDNS Settings

Dynamic DNS Provider

You can select the DNS service provider from the scroll-down menu.

Account

The login username for DDNS.

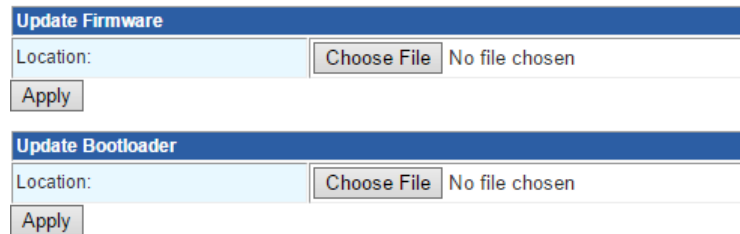
Password

The login password for DDNS.

Buttons

- **Apply:** Apply and save all the settings you've made on this page.
- **Cancel:** Discard all the settings you've made.

3.2.4.2. Administration – Upload Firmware



The screenshot displays two sections for firmware updates. The top section, titled 'Update Firmware', contains a 'Location:' text input field, a 'Choose File' button (which is disabled and shows 'No file chosen'), and an 'Apply' button. The bottom section, titled 'Update Bootloader', also contains a 'Location:' text input field, a 'Choose File' button (disabled, showing 'No file chosen'), and an 'Apply' button.

Here you can upload firmware to the router. Please note that during firmware uploading, the router must be ON at all times. Your PC and the router must be connected during the process as well.

Choose File

Choose the firmware file that is saved in your PC to upload to the router.

Buttons

- **Apply:** Upload the selected firmware file to the router.

3.2.4.3. Administration – Settings Management

Export Settings	
Select Configuration	All Configuration ▾
Export Button	Export

Export Settings

Select Configuration

Select the configuration file of the router that you would like to save on your PC.

Export

Press this button to start saving the configuration file you've chosen on the scroll-down menu.

Import Settings	
Reboot After Import Setting	<input checked="" type="radio"/> Immediately <input type="radio"/> Later
Settings file location	Choose File No file chosen
Import Cancel	

Import Settings

Reboot After Import Setting

Setting the router to reboot immediately or later after uploading the setting you've saved on your PC.

Settings File Location

You can select the file path of the configuration file on your PC by pressing the "Choose File" button.

Buttons

- **Import:** Start uploading configuration file to the router.
- **Cancel:** Discard all the settings you've made.

Load Factory Defaults	
Load Default Button	Load Default

Load Factory Defaults

Load Default Button

Press the "Load Default" button to reset all router's settings back to the default values.

3.2.4.4. Administration – Status

System Info	
Firmware Version	(Jan 18 2017)
System Up Time	2 hours, 37 mins, 48 secs
Operation Mode	Gateway Mode
Internet Configurations	
Connected Type	DHCP
WAN IP Address	192.168.1.189
Subnet Mask	255.255.240.0
Default Gateway	192.168.1.1
Primary Domain Name Server	192.168.1.1
Secondary Domain Name Server	192.168.1.1
MAC Address	:25:7A:66
Local Network	
Local IP Address	10.10.10.254
Local Netmask	255.255.255.0
MAC Address	:25:7A:A6

Here you can view the router's status.

3.2.4.5. Administration – Statistics

Memory	
Memory total:	124920 kB
Memory left:	94108 kB
WAN/LAN	
WAN Rx packets:	255127
WAN Rx bytes:	44062922
WAN Tx packets:	11
WAN Tx bytes:	1834
LAN Rx packets:	1560
LAN Rx bytes:	170718
LAN Tx packets:	4957
LAN Tx bytes:	1751847
All interfaces	
Name	eth2
Rx Packet	1605
Rx Byte	200158
Tx Packet	4960
Tx Byte	1752141
Name	eth3
Rx Packet	255127
Rx Byte	44062922
Tx Packet	11
Tx Byte	1834
Name	br0
Rx Packet	1560
Rx Byte	170718
Tx Packet	4957
Tx Byte	1751847

Here you can view statistics of the network.

3.2.4.6. Administration – PoE

PoE

PoE Status				
Port No.	Enable	Power Consumption (W)	PD Monitoring	PD IP
1	<input checked="" type="checkbox"/>	0	<input type="checkbox"/>	<input type="text" value="0.0.0.0"/>
2	<input checked="" type="checkbox"/>	0	<input type="checkbox"/>	<input type="text" value="0.0.0.0"/>
3	<input checked="" type="checkbox"/>	0	<input type="checkbox"/>	<input type="text" value="0.0.0.0"/>
4	<input checked="" type="checkbox"/>	0	<input type="checkbox"/>	<input type="text" value="0.0.0.0"/>

Enable

Check the check-box to enable the port's PoE function, or un-check the check-box to disable the port's PoE function.

Power Consumption (W)

This field displays the power consumption of the PoE port.

PD Monitoring

Check the check-box to enable the port's PD monitoring. The router will ping the PD connected to the port every 30 seconds. If the PD does not reply 3 times, the PoE port will do a PoE power cycle to reboot the PD.

PD IP

The IP address of the PD.

Buttons

- **Apply:** Apply and save all the settings you've made on this page.
- **Cancel:** Discard all the settings you've made.

Appendix A: Product Safety



This appendix describes safety issues regarding to this product. To use this product safely, it is highly recommended to read this appendix before installing and using this product.

Failure to follow these precautions and warnings might cause product malfunction, electrical shock, or even fire. If this product is working abnormally (e.g. generating smoke), please stop using this product and contact your distributor or retailer immediately.

DO NOT install this product under conditions listed below:

- DO NOT install this product in an environment with conditions exceeding its specified operating environment.
- DO NOT install this product in an environment that is subjected to direct sunlight or near any heating equipment.
- DO NOT install this product in an environment with extreme temperature changes. Extreme temperature changes, even within the product's operating temperature range, may cause malfunctions.
- DO NOT install this product in a location near any sources of water or liquid.
- DO NOT stack this product with other network devices directly on top of one another. Stacking network devices directly without applying a mounting rack will cause this product to overheat.
- DO NOT install this product on an unstable surface. Doing so might cause this product to fall, resulting malfunction.

Product Maintenance Guide:

- DO NOT disassemble this product. Doing so might cause malfunction and void your product's warranty.
- It is recommended to keep your product clear of dust. To remove dust from your product, please use a dry brush and brush it off gently.
- When not using this product, please store it in an environment with low humidity, cool temperature, and free of dust. Failure to do so might cause malfunction.
- Before powering up this product, please make sure that the electric power source meets this product's requirement. DO NOT use other power adapters if this product comes with its own power adapter in the package.

Appendix C: Glossary

ALLNET GmbH Computersysteme declares that the device **ALL-PR4014P** is in compliance with the essential requirements and other relevant provisions of Directive 2004/108/EC or 2014/30/EU. The Declaration of conformity can be found under this link: www.allnet.de/downloads.html

ALLNET GmbH Computersysteme
Maistrasse 2
82110 Germering

Tel.: +49 (0)89 894 222 - 22
Fax: +49 (0)89 894 222 - 33
Email: info@allnet.de

GPL Declaration for ALLNET products

DISCLAIMER_OF_WARRANTY

This Program is free software; you can redistribute it and/or modify it under the terms of the GNU General Public License as published by the Free Software Foundation; version 2 of the License.

This Program is distributed in the hope that it will be useful, but WITHOUT ANY WARRANTY; without even the implied warranty of MERCHANTABILITY or FITNESS FOR A PARTICULAR PURPOSE. See the GNU General Public License for more details.

You should have received a copy of the GNU General Public License along with this Program; if not, write to the Free Software Foundation, Inc., 59 Temple Place, Suite 330, Boston, MA 02111-1307 USA.

The full text of the GNU General Public License version 2 is included with the software distribution in the file LICENSE.GPLv2

NO WARRANTY

BECAUSE THE PROGRAM IS LICENSED FREE OF CHARGE, THERE IS NO WARRANTY FOR THE PROGRAM, TO THE EXTENT PERMITTED BY APPLICABLE LAW. EXCEPT WHEN OTHERWISE STATED IN WRITING THE COPYRIGHT HOLDERS AND/OR OTHER PARTIES PROVIDE THE PROGRAM "AS IS" WITHOUT WARRANTY OF ANY KIND, EITHER EXPRESSED OR IMPLIED, INCLUDING, BUT NOT LIMITED TO, THE IMPLIED WARRANTIES OF MERCHANTABILITY AND FITNESS FOR A PARTICULAR PURPOSE. THE ENTIRE RISK AS TO THE QUALITY AND PERFORMANCE OF THE PROGRAM IS WITH YOU. SHOULD THE PROGRAM PROVE DEFECTIVE, YOU ASSUME THE COST OF ALL NECESSARY SERVICING, REPAIR OR CORRECTION. IN NO EVENT UNLESS REQUIRED BY APPLICABLE LAW OR AGREED TO IN WRITING WILL ANY COPYRIGHT HOLDER, OR ANY OTHER PARTY WHO MAY MODIFY AND/OR REDISTRIBUTE THE PROGRAM AS PERMITTED ABOVE, BE LIABLE TO YOU FOR DAMAGES, INCLUDING ANY GENERAL, SPECIAL, INCIDENTAL OR CONSEQUENTIAL DAMAGES

Appendix C: Glossary

ARISING OUT OF THE USE OR INABILITY TO USE THE PROGRAM (INCLUDING BUT NOT LIMITED TO LOSS OF DATA OR DATA BEING RENDERED INACCURATE OR LOSSES SUSTAINED BY YOU OR THIRD PARTIES OR A FAILURE OF THE PROGRAM TO OPERATE WITH ANY OTHER PROGRAMS), EVEN IF SUCH HOLDER OR OTHER PARTY HAS BEEN ADVISED OF THE POSSIBILITY OF SUCH DAMAGES.

Written Offer for Source Code

For binaries that you receive from ALLNET GmbH Computersysteme on physical media or within the download of the offered firmware that are licensed under any version of the GNU General Public License (GPL) or the GNU LGPL, you can receive a complete machine-readable copy of the source code by sending a written request to:

ALLNET GmbH Computersysteme

Maistrasse 2

82110 Germering

Your request should include: (i) the name of the covered binary, (ii) the version number of the ALLNET product containing the covered binary, (iii) your name, (iv) your company name (if applicable) and (v) your return mailing and email address (if available). We may charge you a nominal fee to cover the cost of the media and distribution. Your request must be sent within three (3) years of the date you received the GPL or LGPL covered code. For your convenience, some or all of the source code may also be found at:

<http://www.allnet.de/gpl.html>

LICENSE.GPLv2

GNU GENERAL PUBLIC LICENSE

Version 2, June 1991

Copyright (C) 1989, 1991 Free Software Foundation, Inc. 51 Franklin Street, Fifth Floor, Boston, MA 02110-1301, USA Everyone is permitted to copy and distribute verbatim copies of this license document, but changing it is not allowed.

Preamble

Appendix C: Glossary

The licenses for most software are designed to take away your freedom to share and change it. By contrast, the GNU General Public License is intended to guarantee your freedom to share and change free software--to make sure the software is free for all its users. This General Public License applies to most of the Free Software Foundation's software and to any other program whose authors commit to using it. (Some other Free Software Foundation software is covered by the GNU Library General Public License instead.) You can apply it to your programs, too.

When we speak of free software, we are referring to freedom, not price. Our General Public Licenses are designed to make sure that you have the freedom to distribute copies of free software (and charge for this service if you wish), that you receive source code or can get it if you want it, that you can change the software or use pieces of it in new free programs; and that you know you can do these things.

To protect your rights, we need to make restrictions that forbid anyone to deny you these rights or to ask you to surrender the rights. These restrictions translate to certain responsibilities for you if you distribute copies of the software, or if you modify it.

For example, if you distribute copies of such a program, whether gratis or for a fee, you must give the recipients all the rights that you have. You must make sure that they, too, receive or can get the source code. And you must show them these terms so they know their rights.

We protect your rights with two steps: (1) copyright the software, and (2) offer you this license which gives you legal permission to copy, distribute and/or modify the software.

Also, for each author's protection and ours, we want to make certain that everyone understands that there is no warranty for this free software. If the software is modified by someone else and passed on, we want its recipients to know that what they have is not the original, so that any problems introduced by others will not reflect on the original authors' reputations.

Finally, any free program is threatened constantly by software patents. We wish to avoid the danger that redistributors of a free program will individually obtain patent licenses, in effect making the program proprietary. To prevent this, we have made it clear that any patent must be licensed for everyone's free use or not licensed at all.

The precise terms and conditions for copying, distribution and modification follow.

GNU GENERAL PUBLIC LICENSE

TERMS AND CONDITIONS FOR COPYING, DISTRIBUTION AND MODIFICATION

0. This License applies to any program or other work which contains a notice placed by the copyright holder saying it may be distributed under the terms of this General Public License. The "Program", below, refers to any such program or work, and a "work based on the Program" means either the Program or any derivative work under copyright law: that is to say, a work containing the Program or a portion of it, either verbatim or with modifications and/or translated into another

Appendix C: Glossary

language. (Hereinafter, translation is included without limitation in the term "modification".) Each licensee is addressed as "you".

Activities other than copying, distribution and modification are not covered by this License; they are outside its scope. The act of running the Program is not restricted, and the output from the Program is covered only if its contents constitute a work based on the Program (independent of having been made by running the Program). Whether that is true depends on what the Program does.

1. You may copy and distribute verbatim copies of the Program's source code as you receive it, in any medium, provided that you conspicuously and appropriately publish on each copy an appropriate copyright notice and disclaimer of warranty; keep intact all the notices that refer to this License and to the absence of any warranty; and give any other recipients of the Program a copy of this License along with the Program.

You may charge a fee for the physical act of transferring a copy, and you may at your option offer warranty protection in exchange for a fee.

2. You may modify your copy or copies of the Program or any portion of it, thus forming a work based on the Program, and copy and distribute such modifications or work under the terms of Section 1 above, provided that you also meet all of these conditions:
 - a) You must cause the modified files to carry prominent notices stating that you changed the files and the date of any change.
 - b) You must cause any work that you distribute or publish, that in whole or in part contains or is derived from the Program or any part thereof, to be licensed as a whole at no charge to all third parties under the terms of this License.
 - c) If the modified program normally reads commands interactively when run, you must cause it, when started running for such interactive use in the most ordinary way, to print or display an announcement including an appropriate copyright notice and a notice that there is no warranty (or else, saying that you provide a warranty) and that users may redistribute the program under these conditions, and telling the user how to view a copy of this License. (Exception: if the Program itself is interactive but does not normally print such an announcement, your work based on the Program is not required to print an announcement.)

These requirements apply to the modified work as a whole. If identifiable sections of that work are not derived from the Program, and can be reasonably considered independent and separate works in themselves, then this License, and its terms, do not apply to those sections when you distribute them as separate works. But when you distribute the same sections as part of a whole which is a work based on the Program, the distribution of the whole must be on the terms of this License, whose permissions for other licensees extend to the entire whole, and thus to each and every part regardless of who wrote it.

Thus, it is not the intent of this section to claim rights or contest your rights to work written entirely by you; rather, the intent is to exercise the right to control the distribution of derivative or collective works based on the Program.

Appendix C: Glossary

In addition, mere aggregation of another work not based on the Program with the Program (or with a work based on the Program) on a volume of a storage or distribution medium does not bring the other work under the scope of this License.

3. You may copy and distribute the Program (or a work based on it, under Section 2) in object code or executable form under the terms of Sections 1 and 2 above provided that you also do one of the following:
 - a) Accompany it with the complete corresponding machine-readable source code, which must be distributed under the terms of Sections 1 and 2 above on a medium customarily used for software interchange; or,
 - b) Accompany it with a written offer, valid for at least three years, to give any third party, for a charge no more than your cost of physically performing source distribution, a complete machine-readable copy of the corresponding source code, to be distributed under the terms of Sections 1 and 2 above on a medium customarily used for software interchange; or,
 - c) Accompany it with the information you received as to the offer to distribute corresponding source code. (This alternative is allowed only for noncommercial distribution and only if you received the program in object code or executable form with such an offer, in accord with Subsection b above.)

The source code for a work means the preferred form of the work for making modifications to it. For an executable work, complete source code means all the source code for all modules it contains, plus any associated interface definition files, plus the scripts used to control compilation and installation of the executable. However, as a special exception, the source code distributed need not include anything that is normally distributed (in either source or binary form) with the major components (compiler, kernel, and so on) of the operating system on which the executable runs, unless that component itself accompanies the executable.

If distribution of executable or object code is made by offering access to copy from a designated place, then offering equivalent access to copy the source code from the same place counts as distribution of the source code, even though third parties are not compelled to copy the source along with the object code.

4. You may not copy, modify, sublicense, or distribute the Program except as expressly provided under this License. Any attempt otherwise to copy, modify, sublicense or distribute the Program is void, and will automatically terminate your rights under this License. However, parties who have received copies, or rights, from you under this License will not have their licenses terminated so long as such parties remain in full compliance.
5. You are not required to accept this License, since you have not signed it. However, nothing else grants you permission to modify or distribute the Program or its derivative works. These actions are prohibited by law if you do not accept this License. Therefore, by modifying or distributing the Program (or any work based on the Program), you indicate your acceptance of this License to do so, and all its terms and conditions for copying, distributing or modifying the Program or works based on it.
6. Each time you redistribute the Program (or any work based on the Program), the recipient automatically receives a license from the original licensor to copy, distribute or modify the Program subject to these terms and conditions. You may not

Appendix C:

Glossary

impose any further restrictions on the recipients' exercise of the rights granted herein. You are not responsible for enforcing compliance by third parties to this License.

7. If, as a consequence of a court judgment or allegation of patent infringement or for any other reason (not limited to patent issues), conditions are imposed on you (whether by court order, agreement or otherwise) that contradict the conditions of this License, they do not excuse you from the conditions of this License. If you cannot distribute so as to satisfy simultaneously your obligations under this License and any other pertinent obligations, then as a consequence you may not distribute the Program at all. For example, if a patent license would not permit royalty-free redistribution of the Program by all those who receive copies directly or indirectly through you, then the only way you could satisfy both it and this License would be to refrain entirely from distribution of the Program.

If any portion of this section is held invalid or unenforceable under any particular circumstance, the balance of the section is intended to apply and the section as a whole is intended to apply in other circumstances.

It is not the purpose of this section to induce you to infringe any patents or other property right claims or to contest validity of any such claims; this section has the sole purpose of protecting the integrity of the free software distribution system, which is implemented by public license practices. Many people have made generous contributions to the wide range of software distributed through that system in reliance on consistent application of that system; it is up to the author/donor to decide if he or she is willing to distribute software through any other system and a licensee cannot impose that choice.

This section is intended to make thoroughly clear what is believed to be a consequence of the rest of this License.

8. If the distribution and/or use of the Program is restricted in certain countries either by patents or by copyrighted interfaces, the original copyright holder who places the Program under this License may add an explicit geographical distribution limitation excluding those countries, so that distribution is permitted only in or among countries not thus excluded. In such case, this License incorporates the limitation as if written in the body of this License.
9. The Free Software Foundation may publish revised and/or new versions of the General Public License from time to time. Such new versions will be similar in spirit to the present version, but may differ in detail to address new problems or concerns.

Each version is given a distinguishing version number. If the Program specifies a version number of this License which applies to it and "any later version", you have the option of following the terms and conditions either of that version or of any later version published by the Free Software Foundation. If the Program does not specify a version number of this License, you may choose any version ever published by the Free Software Foundation.

10. If you wish to incorporate parts of the Program into other free programs whose distribution conditions are different, write to the author to ask for permission. For software which is copyrighted by the Free Software Foundation, write to the Free Software Foundation; we sometimes make exceptions for this. Our decision will be guided by the two goals of preserving the free status of all derivatives of our free software and of promoting the sharing and reuse of software generally.

NO WARRANTY

11. BECAUSE THE PROGRAM IS LICENSED FREE OF CHARGE, THERE IS NO WARRANTY FOR THE PROGRAM, TO THE EXTENT PERMITTED BY APPLICABLE LAW. EXCEPT WHEN OTHERWISE STATED IN WRITING THE COPYRIGHT HOLDERS AND/OR

Appendix C: Glossary

OTHER PARTIES PROVIDE THE PROGRAM "AS IS" WITHOUT WARRANTY OF ANY KIND, EITHER EXPRESSED OR IMPLIED, INCLUDING, BUT NOT LIMITED TO, THE IMPLIED WARRANTIES OF MERCHANTABILITY AND FITNESS FOR A PARTICULAR PURPOSE. THE ENTIRE RISK AS TO THE QUALITY AND PERFORMANCE OF THE PROGRAM IS WITH YOU. SHOULD THE PROGRAM PROVE DEFECTIVE, YOU ASSUME THE COST OF ALL NECESSARY SERVICING, REPAIR OR CORRECTION.

12. IN NO EVENT UNLESS REQUIRED BY APPLICABLE LAW OR AGREED TO IN WRITING WILL ANY COPYRIGHT HOLDER, OR ANY OTHER PARTY WHO MAY MODIFY AND/OR REDISTRIBUTE THE PROGRAM AS PERMITTED ABOVE, BE LIABLE TO YOU FOR DAMAGES, INCLUDING ANY GENERAL, SPECIAL, INCIDENTAL OR CONSEQUENTIAL DAMAGES ARISING OUT OF THE USE OR INABILITY TO USE THE PROGRAM (INCLUDING BUT NOT LIMITED TO LOSS OF DATA OR DATA BEING RENDERED INACCURATE OR LOSSES SUSTAINED BY YOU OR THIRD PARTIES OR A FAILURE OF THE PROGRAM TO OPERATE WITH ANY OTHER PROGRAMS), EVEN IF SUCH HOLDER OR OTHER PARTY HAS BEEN ADVISED OF THE POSSIBILITY OF SUCH DAMAGES.

END OF TERMS AND CONDITIONS

How to Apply These Terms to Your New Programs

If you develop a new program, and you want it to be of the greatest possible use to the public, the best way to achieve this is to make it free software which everyone can redistribute and change under these terms.

To do so, attach the following notices to the program. It is safest to attach them to the start of each source file to most effectively convey the exclusion of warranty; and each file should have at least the "copyright" line and a pointer to where the full notice is found.

<one line to give the program's name and a brief idea of what it does.> Copyright (C) <year> <name of author>

This program is free software; you can redistribute it and/or modify it under the terms of the GNU General Public License as published by the Free Software Foundation; either version 2 of the License, or (at your option) any later version.

This program is distributed in the hope that it will be useful, but WITHOUT ANY WARRANTY; without even the implied warranty of MERCHANTABILITY or FITNESS FOR A PARTICULAR PURPOSE. See the GNU General Public License for more details.

You should have received a copy of the GNU General Public License along with this program; if not, write to the Free Software Foundation, Inc., 51 Franklin Street, Fifth Floor, Boston, MA 02110-1301, USA

Also add information on how to contact you by electronic and paper mail. If the program is interactive, make it output a short notice like this when it starts in an interactive mode:

Gnomovision version 69, Copyright (C) year name of author

Gnomovision comes with ABSOLUTELY NO WARRANTY; for details type `show w'.

This is free software, and you are welcome to redistribute it under certain conditions; type `show c' for details.

Appendix C: Glossary

The hypothetical commands ``show w'` and ``show c'` should show the appropriate parts of the General Public License. Of course, the commands you use may be called something other than ``show w'` and ``show c'`; they could even be mouse-clicks or menu items--whatever suits your program.

You should also get your employer (if you work as a programmer) or your school, if any, to sign a "copyright disclaimer" for the program, if necessary. Here is a sample; alter the names:

Yoyodyne, Inc., hereby disclaims all copyright interest in the program
'Gnomovision' (which makes passes at compilers) written by James Hacker.

<signature of Ty Coon>, 1 April 1989

Ty Coon, President of Vice

This General Public License does not permit incorporating your program into proprietary programs. If your program is a subroutine library, you may consider it more useful to permit linking proprietary applications with the library. If this is what you want to do, use the GNU Lesser General Public License instead of this License.

LICENSE.LGPLv2.1

GNU LESSER GENERAL PUBLIC LICENSE

Version 2.1, February 1999

Copyright (C) 1991, 1999 Free Software Foundation, Inc. 51 Franklin Street, Fifth Floor, Boston, MA 02110-1301 USA

Everyone is permitted to copy and distribute verbatim copies of this license document, but changing it is not allowed.

[This is the first released version of the Lesser GPL. It also counts as the successor of the GNU Library Public License, version 2, hence the version number 2.1.]

Preamble

The licenses for most software are designed to take away your freedom to share and change it. By contrast, the GNU General Public Licenses are intended to guarantee your freedom to share and change free software--to make sure the software is free for all its users.

This license, the Lesser General Public License, applies to some specially designated software packages--typically libraries--of the Free Software Foundation and other authors who decide to use it. You can use it too, but we suggest you first think carefully about whether this license or the ordinary General Public License is the better strategy to use in any particular case, based on the explanations below.

When we speak of free software, we are referring to freedom of use, not price. Our General Public Licenses are designed to make sure that you have the freedom to distribute copies of free software (and charge for this service if you wish); that you receive source code or can get it if you want it; that you can change the software and use pieces of it in new free programs; and that you are informed that you can do these things.

Appendix C:

Glossary

To protect your rights, we need to make restrictions that forbid distributors to deny you these rights or to ask you to surrender these rights. These restrictions translate to certain responsibilities for you if you distribute copies of the library or if you modify it.

For example, if you distribute copies of the library, whether gratis or for a fee, you must give the recipients all the rights that we gave you. You must make sure that they, too, receive or can get the source code. If you link other code with the library, you must provide complete object files to the recipients, so that they can relink them with the library after making changes to the library and recompiling it. And you must show them these terms so they know their rights.

We protect your rights with a two-step method: (1) we copyright the library, and (2) we offer you this license, which gives you legal permission to copy, distribute and/or modify the library.

To protect each distributor, we want to make it very clear that there is no warranty for the free library. Also, if the library is modified by someone else and passed on, the recipients should know that what they have is not the original version, so that the original author's reputation will not be affected by problems that might be introduced by others.

Finally, software patents pose a constant threat to the existence of any free program. We wish to make sure that a company cannot effectively restrict the users of a free program by obtaining a restrictive license from a patent holder.

Therefore, we insist that any patent license obtained for a version of the library must be consistent with the full freedom of use specified in this license.

Most GNU software, including some libraries, is covered by the ordinary GNU General Public License. This license, the GNU Lesser General Public License, applies to certain designated libraries, and is quite different from the ordinary General Public License. We use this license for certain libraries in order to permit linking those libraries into non-free programs.

When a program is linked with a library, whether statically or using a shared library, the combination of the two is legally speaking a combined work, a derivative of the original library. The ordinary General Public License therefore permits such linking only if the entire combination fits its criteria of freedom. The Lesser General Public License permits more lax criteria for linking other code with the library.

We call this license the "Lesser" General Public License because it does Less to protect the user's freedom than the ordinary General Public License. It also provides other free software developers Less of an advantage over competing non-free programs. These disadvantages are the reason we use the ordinary General Public License for many libraries. However, the Lesser license provides advantages in certain special circumstances.

For example, on rare occasions, there may be a special need to encourage the widest possible use of a certain library, so that it becomes a de-facto standard. To achieve this, non-free programs must be allowed to use the library. A more frequent case is that a free library does the same job as widely used non-free libraries. In this case, there is little to gain by limiting the free library to free software only, so we use the Lesser General Public License.

In other cases, permission to use a particular library in non-free programs enables a greater number of people to use a large body of free software. For example, permission to use the GNU C Library in non-free programs enables many more people to use the whole GNU operating system, as well as its variant, the GNU/Linux operating system.

Although the Lesser General Public License is Less protective of the users' freedom, it does ensure that the user of a program that is linked with the Library has the freedom and the wherewithal to run that program using a modified version of the Library.

The precise terms and conditions for copying, distribution and modification follow. Pay close attention to the difference between a "work based on the library" and a "work that uses the library". The former contains code derived from the library, whereas the latter must be combined with the library in order to run.

GNU LESSER GENERAL PUBLIC LICENSE

TERMS AND CONDITIONS FOR COPYING, DISTRIBUTION AND MODIFICATION

0. This License Agreement applies to any software library or other program which contains a notice placed by the copyright holder or other authorized party saying it may be distributed under the terms of this Lesser General Public License (also called "this License"). Each licensee is addressed as "you".

A "library" means a collection of software functions and/or data prepared so as to be conveniently linked with application programs (which use some of those functions and data) to form executables.

The "Library", below, refers to any such software library or work which has been distributed under these terms. A "work based on the Library" means either the Library or any derivative work under copyright law: that is to say, a work containing the Library or a portion of it, either verbatim or with modifications and/or translated straightforwardly into another language. (Hereinafter, translation is included without limitation in the term "modification".)

"Source code" for a work means the preferred form of the work for making modifications to it. For a library, complete source code means all the source code for all modules it contains, plus any associated interface definition files, plus the scripts used to control compilation and installation of the library.

Activities other than copying, distribution and modification are not covered by this License; they are outside its scope. The act of running a program using the Library is not restricted, and output from such a program is covered only if its contents constitute a work based on the Library (independent of the use of the Library in a tool for writing it). Whether that is true depends on what the Library does and what the program that uses the Library does.

1. You may copy and distribute verbatim copies of the Library's complete source code as you receive it, in any medium, provided that you conspicuously and appropriately publish on each copy an appropriate copyright notice and disclaimer of warranty; keep intact all the notices that refer to this License and to the absence of any warranty; and distribute a copy of this License along with the Library.

You may charge a fee for the physical act of transferring a copy, and you may at your option offer warranty protection in exchange for a fee.

2. You may modify your copy or copies of the Library or any portion of it, thus forming a work based on the Library, and copy and distribute such modifications or work under the terms of Section 1 above, provided that you also meet all of these conditions:
 - a) The modified work must itself be a software library.
 - b) You must cause the files modified to carry prominent notices stating that you changed the files and the date of any change.
 - c) You must cause the whole of the work to be licensed at no charge to all third parties under the terms of this License.
 - d) If a facility in the modified Library refers to a function or a table of data to be supplied by an application program that uses the facility, other than as an argument passed when the facility is invoked, then you must make a good faith

Appendix C: Glossary

effort to ensure that, in the event an application does not supply such function or table, the facility still operates, and performs whatever part of its purpose remains meaningful.

(For example, a function in a library to compute square roots has a purpose that is entirely well-defined independent of the application. Therefore, Subsection 2d requires that any application-supplied function or table used by this function must be optional: if the application does not supply it, the square root function must still compute square roots.)

These requirements apply to the modified work as a whole. If identifiable sections of that work are not derived from the Library, and can be reasonably considered independent and separate works in themselves, then this License, and its terms, do not apply to those sections when you distribute them as separate works. But when you distribute the same sections as part of a whole which is a work based on the Library, the distribution of the whole must be on the terms of this License, whose permissions for other licensees extend to the entire whole, and thus to each and every part regardless of who wrote it.

Thus, it is not the intent of this section to claim rights or contest your rights to work written entirely by you; rather, the intent is to exercise the right to control the distribution of derivative or collective works based on the Library.

In addition, mere aggregation of another work not based on the Library with the Library (or with a work based on the Library) on a volume of a storage or distribution medium does not bring the other work under the scope of this License.

3. You may opt to apply the terms of the ordinary GNU General Public License instead of this License to a given copy of the Library. To do this, you must alter all the notices that refer to this License, so that they refer to the ordinary GNU General Public License, version 2, instead of to this License. (If a newer version than version 2 of the ordinary GNU General Public License has appeared, then you can specify that version instead if you wish.) Do not make any other change in these notices.

Once this change is made in a given copy, it is irreversible for that copy, so the ordinary GNU General Public License applies to all subsequent copies and derivative works made from that copy.

This option is useful when you wish to copy part of the code of the Library into a program that is not a library.

4. You may copy and distribute the Library (or a portion or derivative of it, under Section 2) in object code or executable form under the terms of Sections 1 and 2 above provided that you accompany it with the complete corresponding machine-readable source code, which must be distributed under the terms of Sections 1 and 2 above on a medium customarily used for software interchange.

If distribution of object code is made by offering access to copy from a designated place, then offering equivalent access to copy the source code from the same place satisfies the requirement to distribute the source code, even though third parties are not compelled to copy the source along with the object code.

5. A program that contains no derivative of any portion of the Library, but is designed to work with the Library by being compiled or linked with it, is called a "work that uses the Library". Such a work, in isolation, is not a derivative work of the Library, and therefore falls outside the scope of this License.

Appendix C: Glossary

However, linking a "work that uses the Library" with the Library creates an executable that is a derivative of the Library (because it contains portions of the Library), rather than a "work that uses the library". The executable is therefore covered by this License. Section 6 states terms for distribution of such executables.

When a "work that uses the Library" uses material from a header file that is part of the Library, the object code for the work may be a derivative work of the Library even though the source code is not. Whether this is true is especially significant if the work can be linked without the Library, or if the work is itself a library. The threshold for this to be true is not precisely defined by law.

If such an object file uses only numerical parameters, data structure layouts and accessors, and small macros and small inline functions (ten lines or less in length), then the use of the object file is unrestricted, regardless of whether it is legally a derivative work. (Executables containing this object code plus portions of the Library will still fall under Section 6.)

Otherwise, if the work is a derivative of the Library, you may distribute the object code for the work under the terms of Section 6. Any executables containing that work also fall under Section 6, whether or not they are linked directly with the Library itself.

6. As an exception to the Sections above, you may also combine or link a "work that uses the Library" with the Library to produce a work containing portions of the Library, and distribute that work under terms of your choice, provided that the terms permit modification of the work for the customer's own use and reverse engineering for debugging such modifications.

You must give prominent notice with each copy of the work that the Library is used in it and that the Library and its use are covered by this License. You must supply a copy of this License. If the work during execution displays copyright notices, you must include the copyright notice for the Library among them, as well as a reference directing the user to the copy of this License. Also, you must do one of these things:

- a) Accompany the work with the complete corresponding machine-readable source code for the Library including whatever changes were used in the work (which must be distributed under Sections 1 and 2 above); and, if the work is an executable linked with the Library, with the complete machine-readable "work that uses the Library", as object code and/or source code, so that the user can modify the Library and then relink to produce a modified executable containing the modified Library. (It is understood that the user who changes the contents of definitions files in the Library will not necessarily be able to recompile the application to use the modified definitions.)
- b) Use a suitable shared library mechanism for linking with the Library. A suitable mechanism is one that (1) uses at run time a copy of the library already present on the user's computer system, rather than copying library functions into the executable, and (2) will operate properly with a modified version of the library, if the user installs one, as long as the modified version is interface-compatible with the version that the work was made with.
- c) Accompany the work with a written offer, valid for at least three years, to give the same user the materials specified in Subsection 6a, above, for a charge no more than the cost of performing this distribution.
- d) If distribution of the work is made by offering access to copy from a designated place, offer equivalent access to copy the above specified materials from the same place.
- e) Verify that the user has already received a copy of these materials or that you have already sent this user a copy.

Appendix C:

Glossary

For an executable, the required form of the "work that uses the Library" must include any data and utility programs needed for reproducing the executable from it. However, as a special exception, the materials to be distributed need not include anything that is normally distributed (in either source or binary form) with the major components (compiler, kernel, and so on) of the operating system on which the executable runs, unless that component itself accompanies the executable.

It may happen that this requirement contradicts the license restrictions of other proprietary libraries that do not normally accompany the operating system. Such a contradiction means you cannot use both them and the Library together in an executable that you distribute.

7. You may place library facilities that are a work based on the Library side-by-side in a single library together with other library facilities not covered by this License, and distribute such a combined library, provided that the separate distribution of the work based on the Library and of the other library facilities is otherwise permitted, and provided that you do these two things:
 - a) Accompany the combined library with a copy of the same work based on the Library, uncombined with any other library facilities. This must be distributed under the terms of the Sections above.
 - b) Give prominent notice with the combined library of the fact that part of it is a work based on the Library, and explaining where to find the accompanying uncombined form of the same work.
8. You may not copy, modify, sublicense, link with, or distribute the Library except as expressly provided under this License. Any attempt otherwise to copy, modify, sublicense, link with, or distribute the Library is void, and will automatically terminate your rights under this License. However, parties who have received copies, or rights, from you under this License will not have their licenses terminated so long as such parties remain in full compliance.
9. You are not required to accept this License, since you have not signed it. However, nothing else grants you permission to modify or distribute the Library or its derivative works. These actions are prohibited by law if you do not accept this License. Therefore, by modifying or distributing the Library (or any work based on the Library), you indicate your acceptance of this License to do so, and all its terms and conditions for copying, distributing or modifying the Library or works based on it.
10. Each time you redistribute the Library (or any work based on the Library), the recipient automatically receives a license from the original licensor to copy, distribute, link with or modify the Library subject to these terms and conditions. You may not impose any further restrictions on the recipients' exercise of the rights granted herein. You are not responsible for enforcing compliance by third parties with this License.
11. If, as a consequence of a court judgment or allegation of patent infringement or for any other reason (not limited to patent issues), conditions are imposed on you (whether by court order, agreement or otherwise) that contradict the conditions of this License, they do not excuse you from the conditions of this License. If you cannot distribute so as to satisfy simultaneously your obligations under this License and any other pertinent obligations, then as a consequence you may not distribute the Library at all. For example, if a patent license would not permit royalty-free redistribution of the Library by all those who receive copies directly or indirectly through you, then the only way you could satisfy both it and this License would be to refrain entirely from distribution of the Library.

Appendix C: Glossary

If any portion of this section is held invalid or unenforceable under any particular circumstance, the balance of the section is intended to apply, and the section as a whole is intended to apply in other circumstances.

It is not the purpose of this section to induce you to infringe any patents or other property right claims or to contest validity of any such claims; this section has the sole purpose of protecting the integrity of the free software distribution system which is implemented by public license practices. Many people have made generous contributions to the wide range of software distributed through that system in reliance on consistent application of that system; it is up to the author/donor to decide if he or she is willing to distribute software through any other system and a licensee cannot impose that choice.

This section is intended to make thoroughly clear what is believed to be a consequence of the rest of this License.

12. If the distribution and/or use of the Library is restricted in certain countries either by patents or by copyrighted interfaces, the original copyright holder who places the Library under this License may add an explicit geographical distribution limitation excluding those countries, so that distribution is permitted only in or among countries not thus excluded. In such case, this License incorporates the limitation as if written in the body of this License.

13. The Free Software Foundation may publish revised and/or new versions of the Lesser General Public License from time to time. Such new versions will be similar in spirit to the present version, but may differ in detail to address new problems or concerns.

Each version is given a distinguishing version number. If the Library specifies a version number of this License which applies to it and "any later version", you have the option of following the terms and conditions either of that version or of any later version published by the Free Software Foundation. If the Library does not specify a license version number, you may choose any version ever published by the Free Software Foundation.

14. If you wish to incorporate parts of the Library into other free programs whose distribution conditions are incompatible with these, write to the author to ask for permission. For software which is copyrighted by the Free Software Foundation, write to the Free Software Foundation; we sometimes make exceptions for this. Our decision will be guided by the two goals of preserving the free status of all derivatives of our free software and of promoting the sharing and reuse of software generally.

NO WARRANTY

15. BECAUSE THE LIBRARY IS LICENSED FREE OF CHARGE, THERE IS NO WARRANTY FOR THE LIBRARY, TO THE EXTENT PERMITTED BY APPLICABLE LAW. EXCEPT WHEN OTHERWISE STATED IN WRITING THE COPYRIGHT HOLDERS AND/OR OTHER PARTIES PROVIDE THE LIBRARY "AS IS" WITHOUT WARRANTY OF ANY KIND, EITHER EXPRESSED OR IMPLIED, INCLUDING, BUT NOT LIMITED TO, THE IMPLIED WARRANTIES OF MERCHANTABILITY AND FITNESS FOR A PARTICULAR PURPOSE. THE ENTIRE RISK AS TO THE QUALITY AND PERFORMANCE OF THE LIBRARY IS WITH YOU. SHOULD THE LIBRARY PROVE DEFECTIVE, YOU ASSUME THE COST OF ALL NECESSARY SERVICING, REPAIR OR CORRECTION.
16. IN NO EVENT UNLESS REQUIRED BY APPLICABLE LAW OR AGREED TO IN WRITING WILL ANY COPYRIGHT HOLDER, OR ANY OTHER PARTY WHO MAY MODIFY AND/OR REDISTRIBUTE THE LIBRARY AS PERMITTED ABOVE, BE LIABLE TO YOU FOR DAMAGES, INCLUDING ANY GENERAL, SPECIAL, INCIDENTAL OR CONSEQUENTIAL DAMAGES ARISING OUT OF THE USE OR

Appendix C:

Glossary

INABILITY TO USE THE LIBRARY (INCLUDING BUT NOT LIMITED TO LOSS OF DATA OR DATA BEING RENDERED INACCURATE OR LOSSES SUSTAINED BY YOU OR THIRD PARTIES OR A FAILURE OF THE LIBRARY TO OPERATE WITH ANY OTHER SOFTWARE), EVEN IF SUCH HOLDER OR OTHER PARTY HAS BEEN ADVISED OF THE POSSIBILITY OF SUCH DAMAGES.

END OF TERMS AND CONDITIONS

How to Apply These Terms to Your New Libraries

If you develop a new library, and you want it to be of the greatest possible use to the public, we recommend making it free software that everyone can redistribute and change. You can do so by permitting redistribution under these terms (or, alternatively, under the terms of the ordinary General Public License).

To apply these terms, attach the following notices to the library. It is safest to attach them to the start of each source file to most effectively convey the exclusion of warranty; and each file should have at least the "copyright" line and a pointer to where the full notice is found.

<one line to give the library's name and a brief idea of what it does.> Copyright (C) <year> <name of author>

This library is free software; you can redistribute it and/or modify it under the terms of the GNU Lesser General Public License as published by the Free Software Foundation; either version 2.1 of the License, or (at your option) any later version. This library is distributed in the hope that it will be useful, but WITHOUT ANY WARRANTY; without even the implied warranty of MERCHANTABILITY or FITNESS FOR A PARTICULAR PURPOSE. See the GNU Lesser General Public License for more details.

You should have received a copy of the GNU Lesser General Public License along with this library; if not, write to the Free Software Foundation, Inc., 51 Franklin Street, Fifth Floor, Boston, MA 02110-1301 USA

Also add information on how to contact you by electronic and paper mail.

You should also get your employer (if you work as a programmer) or your school, if any, to sign a "copyright disclaimer" for the library, if necessary. Here is a sample; alter the names:

Yoyodyne, Inc., hereby disclaims all copyright interest in the library 'Frob' (a library for tweaking knobs) written by James Random Hacker.

<signature of Ty Coon>, 1 April 1990 Ty Coon, President of Vice

That's all there is to it!