



Powerline Network

Instant Networks for Internet Access...and More!

Solution for SOHO, SMALL OFFICE AND HOME OFFICE

Encryption Management Utility

User Guide

for

ETHERNET BRIDGE ALL1685

Index

1.	Introduction.....	3
1.1.	Installation.....	3
1.2.	Run the Utility.....	4
2.	How to use	5
2.1.	Main Frame	5
2.2.	Privacy Frame	9
2.3.	Diagnostics Frame.....	10
2.4.	About Frame	12

1. Introduction

The ALLNET Configuration Utility enables the user to find HomePlug devices on the Powerline networks, measures data rate performance, ensures privacy and performs diagnostics by setting user defined secure Powerline networks.

1.1. Installation

First step, you need to verify that there is no other Powerline Encryption Management Utility installed on your computer before installing this utility. If there is another utility installed, please uninstall it and restart your computer.

Second step, please insert setup CD-ROM into the computer's CD-ROM drive. Run the "Setup.exe" to install the Utility. The CD will launch an installation screen shown in Figure 1. Click the "Next" button to continue and follow the instruction to complete the installation.

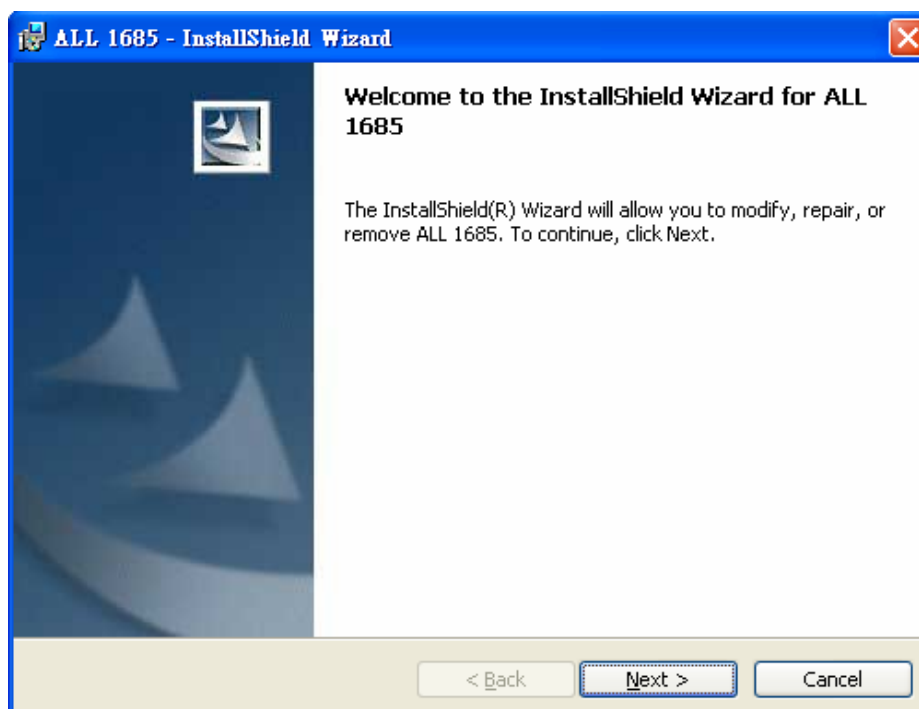


Figure 1: Installation Screen

1.2. Run the Utility

After installed the utility, please run the utility from Start / All Programs or double-click the utility icon on the desktop. Figure 2 is the main frame screen of the configuration utility. This screen shows a HomePlug 1.0 device connected as a local device and another three devices as remote devices.

Figure 3 is the main screen that High Speed device connected locally.

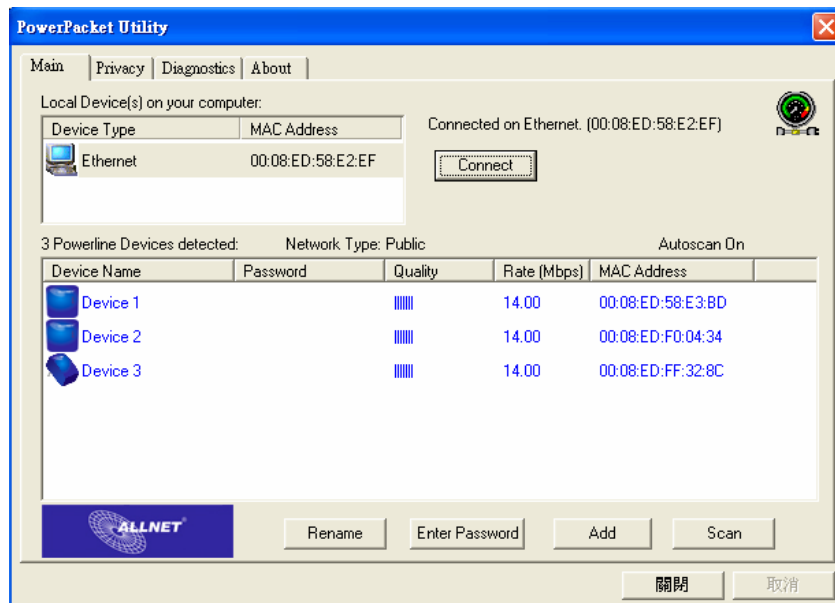


Figure 2: Main Screen with HomePlug 1.0 device Local

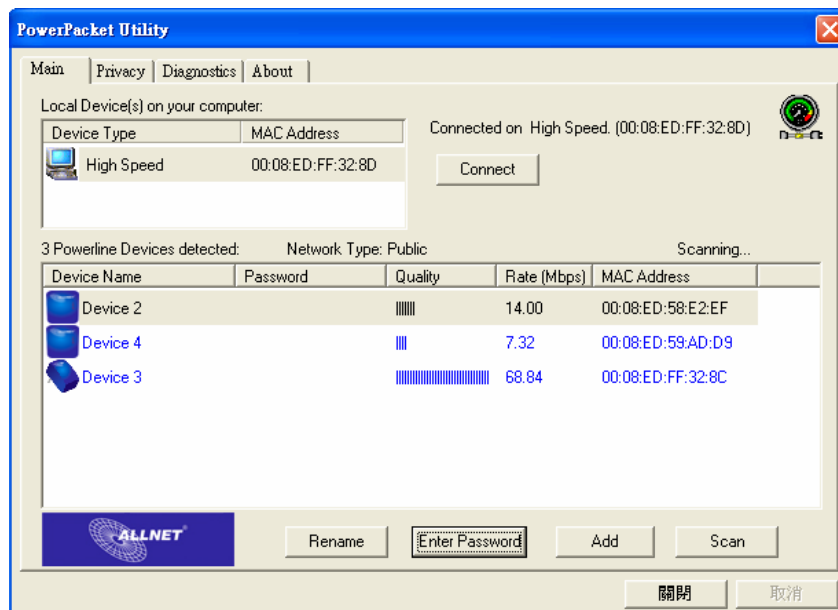


Figure 3: Main Screen with High Speed device Local

2. How to use

There are four Tabs (Main, Privacy, Diagnostics, About) on the Utility left top. Each Tab will launch the different frame and provide different functions. Follows will introduce the all functions by frame.

2.1. Main Frame

The Main frame will list all Powerline devices logically connected on the same Powerline network.

Upper Window

The upper window shows the all local HomePlug devices connected to your computer. In most cases, there is only one device shown on the window. If you have more than one NIC (Network Interface Card) on your computer and also connect to HomePlug devices, you will find more than one local HomePlug devices shown on the upper window. However, if you have also HomePlug USB device connected at the same time, you will find more than one local HomePlug devices, too. You can select one device and click the “Connect” button to manage the Powerline setting. The status area, above the “Connect” button, will show the local device you selected. The utility will scan the power line periodically to search all HomePlug devices.

Lower Window

The lower window lists all the HomePlug devices, discovered on the current logical Powerline networks. The window will report the connectivity and status.

Figure 4 shows the main frame. There are two local devices connected to the computer and three devices on the same Powerline networks.

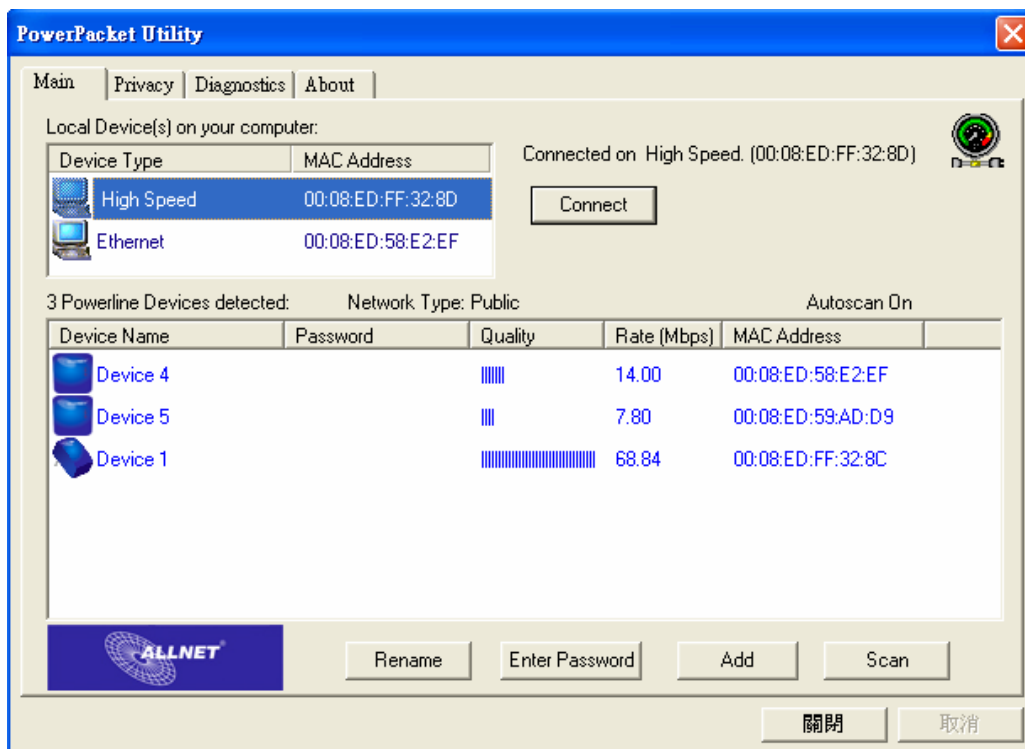




Figure 4: The main frame screen

The “**Device Name**” column shows the default device name. You can change the name by clicking the “Rename” button. The icon  means HomePlug 1.0 device and  high-speed device.

The “**Password**” column shows the device password. You can input the password by clicking the “Enter Password” button.

The “**Quality**” column shows the remote device’s link quality with the local device.

The “**Rate(Mbps)**” column shows the device’s connecting performance with the local device you selected.

The “**MAC Address**” column shows the device’s MAC address.

“Rename” button

Please select the device you want to edit the name and click the “Rename” button to edit the device name on the “name” column directly.

“Enter Password” button

If you want to create a private network, you need to enter the device password first. Please click on the device you selected and then click the “Enter Password” button, the dialog box will appear as shown in Figure 5. The selected device name is shown above the field for entering the password. After entered the password, please click

“OK” button. The confirmation box will notice the password you entered correct or not. If not, please check the device password and re-try again.



Figure 5: Set Device Password

“Add” button

The “Add” button is used to add a remote device to your logical network that is not in the list displayed on the lower window. For Example, a device is in another logical network currently. You can click on the “Add” button to add the device to your logical network. The dialog box shows in Figure 6 after click on the “Add” button, it allows you to enter both of the device name and the password. The device can join to your logical network only when the password is correct. And also, the device name will be changed to the name you entered. The confirmation box will notice success or not. If not, please check the device password and also the device in the same Powerline network, and then re-try again.



Figure 6: Add Remote Device

“Scan” button

The “Scan” button is used to search for the HomePlug devices connected to your logical network immediately. By default setting, It will scan every few seconds and updates the display lists automatically. The screen after entered the name and password will show as Figure 7.

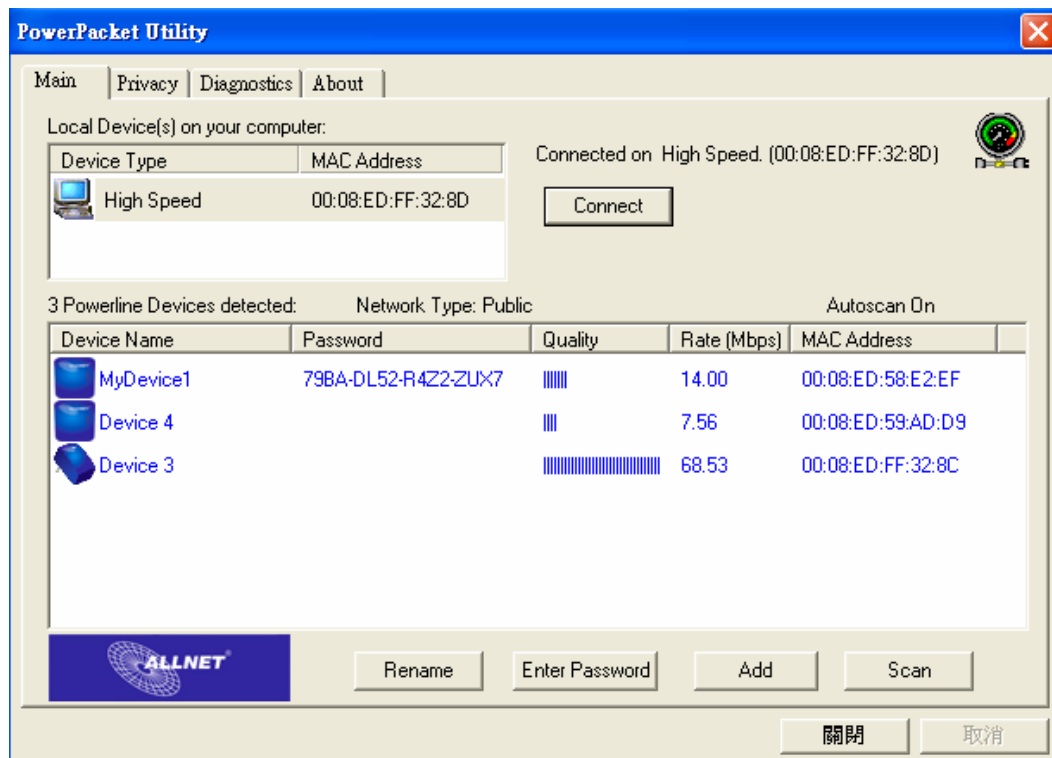


Figure 7: Main frame screen of the Configuration Utility

2.2. Privacy Frame

All of the HomePlug devices generally use a default logical network name **“HomePlug”**. The “Privacy” frame provides a function to manage the logical network and support you additional security. You can change the network name to the private network name.

“Use Default (Public Network)” button

You can set the network name to the public one by entering “HomePlug” as the network name or click on the “Use Default (Public Network)” button, and then press the “Set Local Device Only” button or “Set All Devices” button.

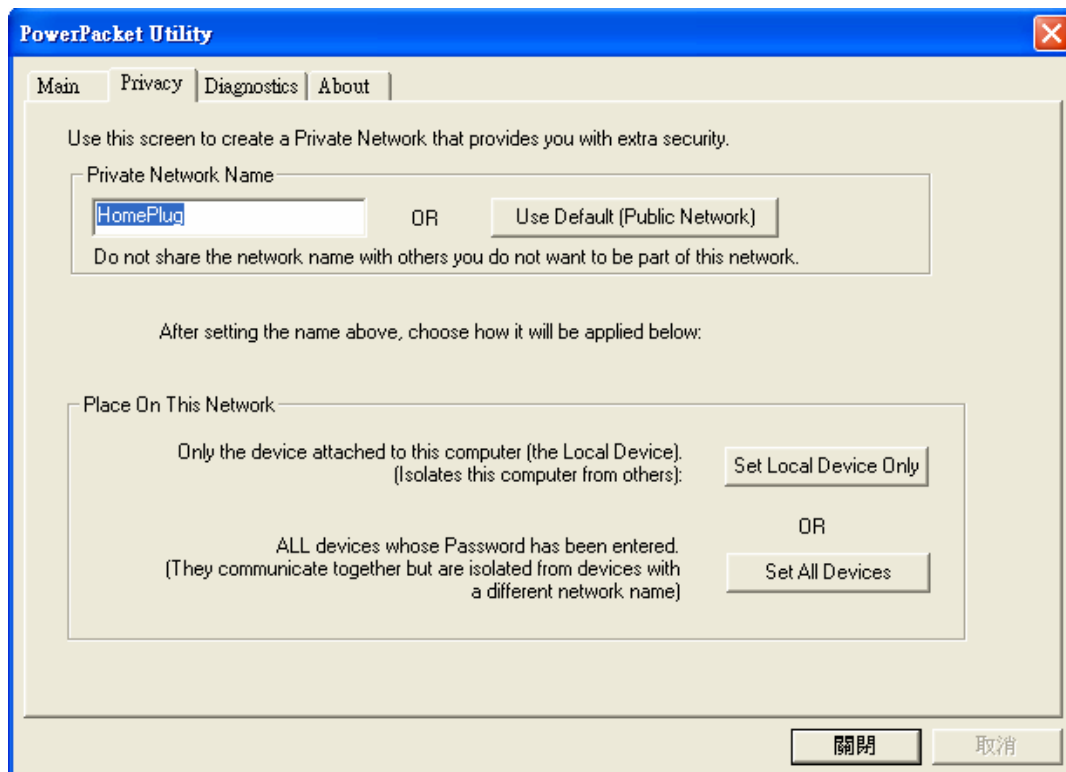


Figure 8: Privacy Frame Screen

“Set Local Device Only” button

The “Set Local Device Only” button is used to change the network name of the local device only. After changed the network name, all of the devices existing before will no longer be able to communicate or respond to you.

“Set All Devices” button

The “Set All Devices” button is used to change the logical network of all devices that showed on the Diagnostics frame with the correct password.

2.3. Diagnostics Frame

The Diagnostics frame shows the system information and the history of all devices that have been found before. It is shown as in Figure 9.

The **upper window** of Diagnostics frame shows the technical data of software and hardware on the host computer used to communicate over HomePlug. It includes the following:

- Operating System Type/Version
- Host Network Name
- User Name
- MAC Address of all NICs (network interface card)
- Identify versions of all Driver DLLs and Libraries used (NDIS) and optionally
- Device manufacturer name (Only high speed devices)
- MAC Firmware Version (Only high speed devices)
- Vendor name

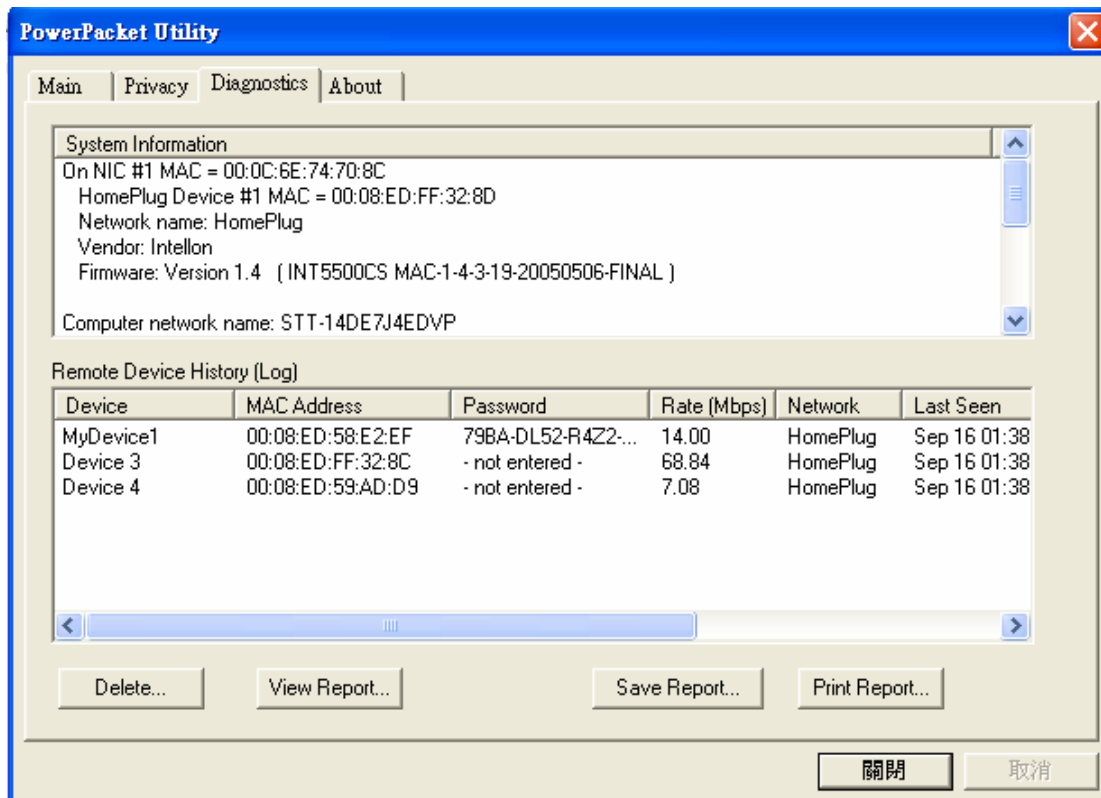


Figure 9: Diagnostics Frame Screen

The **lower window** of Diagnostics frame contains the history of all remote devices that have been found before on the computer. All the devices will be shown here regardless of they are on the same logical network name or not. If the devices are on the

same logical network, they will show a transfer rate in the Rate column. If the devices are on other logical networks or devices are no longer exist, they will show as “?” in the Rate column. The following remote device information is available from the list:

- Device Name
- MAC Address
- Password
- Last known rate
- Last Known Network
- Device manufacturer name
- Date that device last scanned.
- MAC Firmware Version. (Only high speed devices)

The diagnostics information displayed on the upper and lower window could be saved to a text file, or print. Devices that are no longer existed in the network can be deleted via the “Delete...” button, too.

“Delete...” button

Please select the device that is no longer existed in the network and click on this button to delete the device record.

“View Report...” button

Please click on this button to view all the device information displayed on the upper and lower window by the default text editor.

“Save Report...” button

You can click on this button to save all the device information displayed on the upper and lower window to a text file directly.

“Print Report...” button

You can click on this button to print the all diagnostics information to your default printer directly.

2.4. About Frame

The **About** Frame shows the software version and provides the ALLNET website link. You can click on the web address field to open a web browser and link to ALLNET web site directly.

Preferences window

The lower window shows the option for you to turn on the “Auto Scan” feature or off. It is shown as Figure 10. The default setting is “on”. If you turn off the “Auto Scan” feature, the main frame will not scan the all devices automatically. You need to click the “Scan” button in the main frame to search for the devices manually.

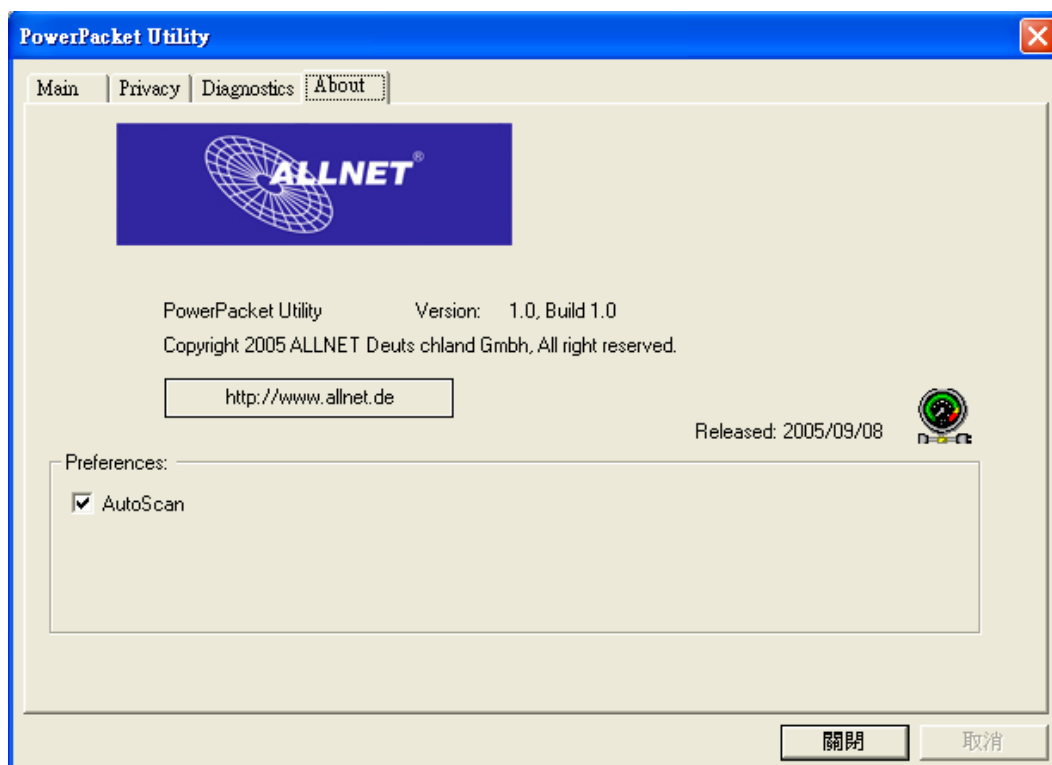


Figure 10: About Frame Screen