



# Powerline Network

*Instant Network for Internet Access...and More!*  
***Solution for SOHO, SMALL OFFICE AND HOME OFFICE***

## USER GUIDE

**For**

ALL168205 MAC address Burner

# Powerline Network

## PREFACE

This document is used for the ALL168205 MAC address Burner to recover the MAC address issue that caused by the Utility V.2.0.0 on the Firmware V3.0.5.

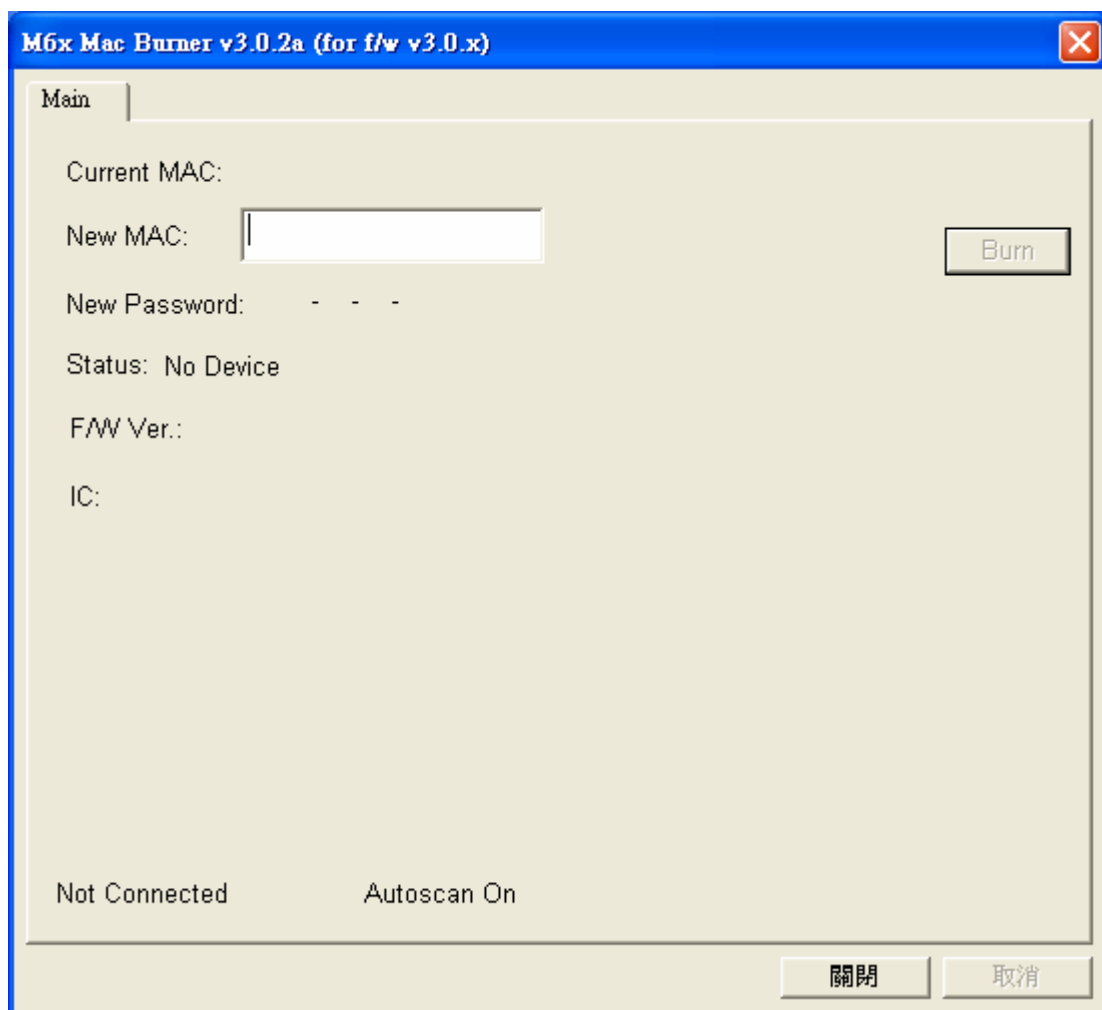
Please read this document before running the tool.

---

Please decompress the files to the same directory. And then, follow up the below instructions to change back your MAC address.

### 1. Execute “ALL168205-MacBurner3”.exe. You will find below window.

If you run this program on Vista 32-Bit, please use administrator to execute.

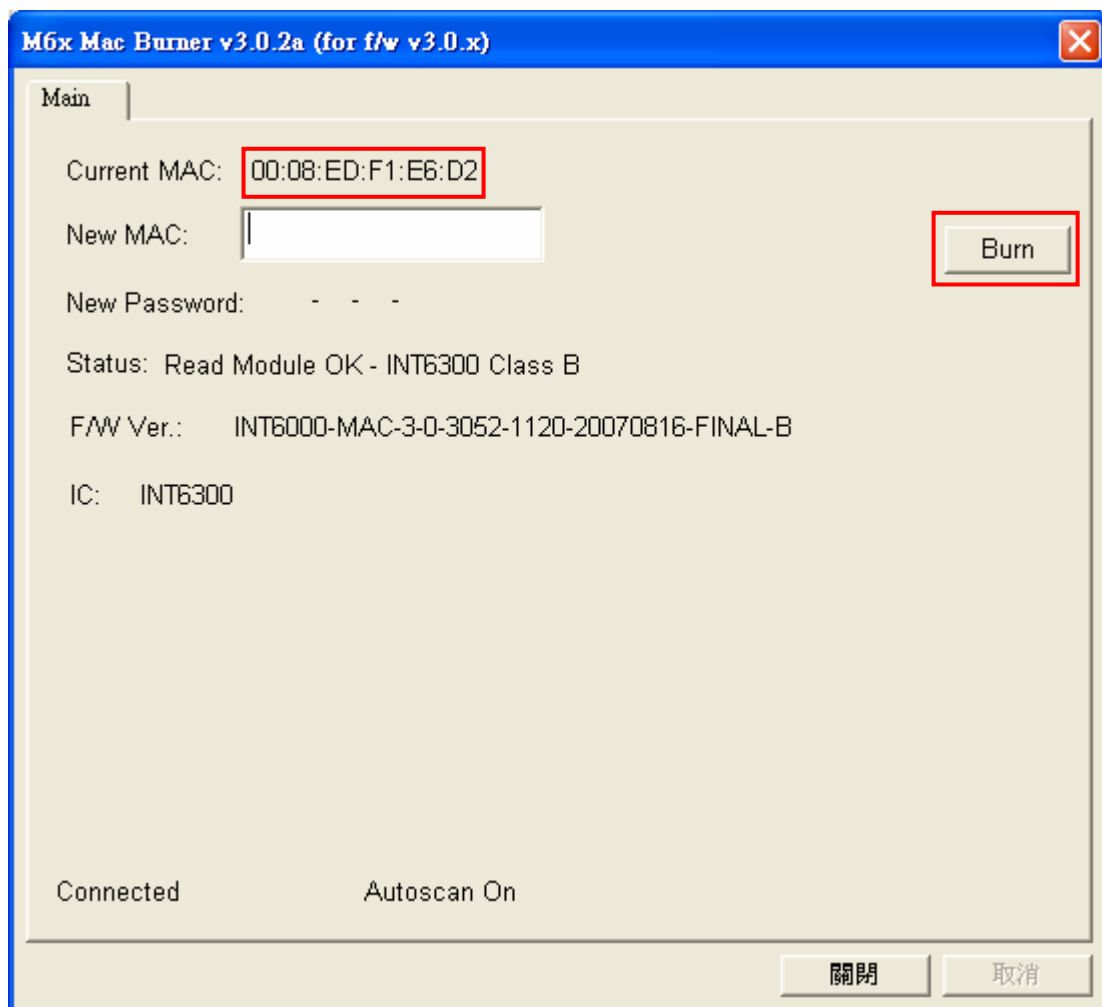


## Powerline Network

### 2. Connect the ALL168205 to PC.

If you have more than two Network Interface cards (NIC) on PC, please use the first NIC to connect the ALL168205.

After connected the ALL168205 to PC, the “Burn” button will enabled. And also, it will show the current MAC address. Please refer to below picture.

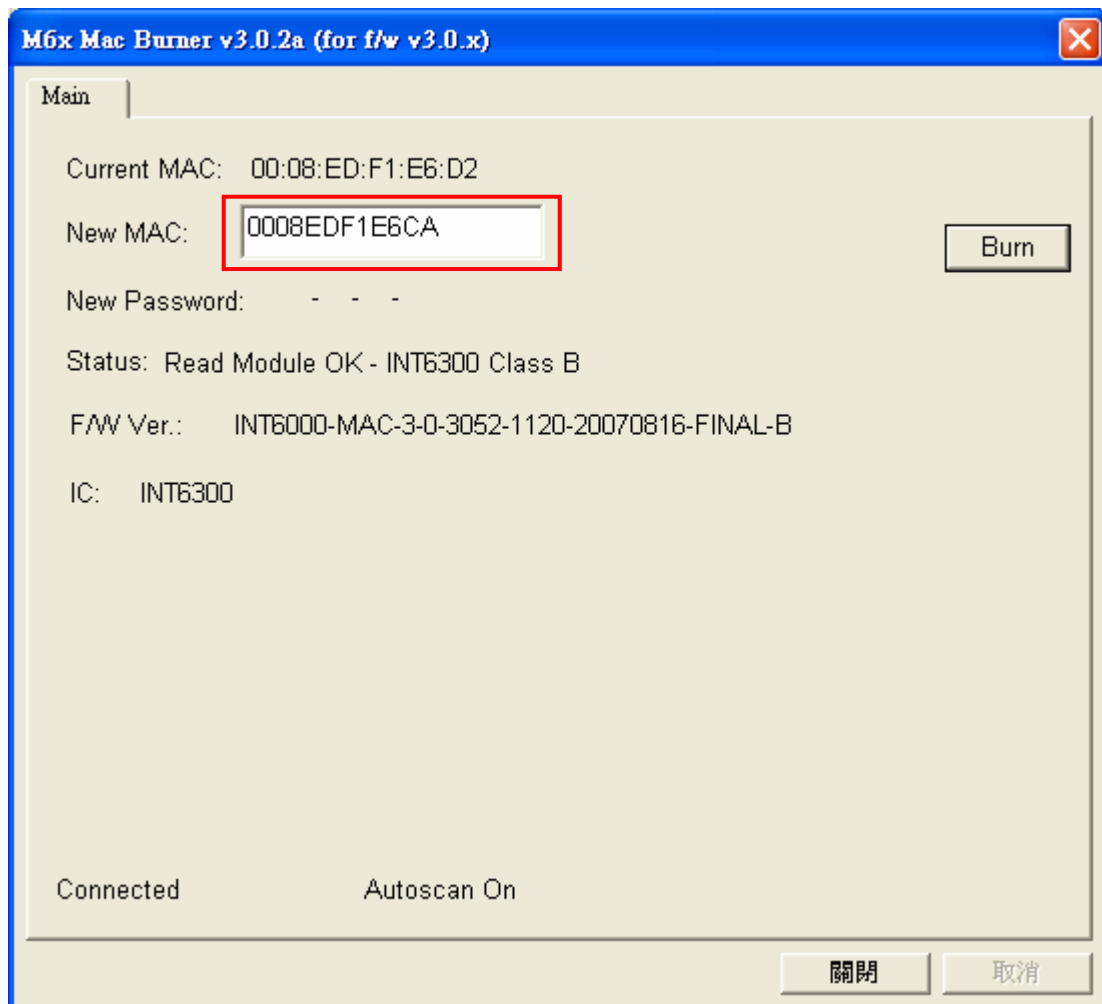


## Powerline Network

### 3. Input the MAC

Please Input the MAC address that printed on the label of ALL168205. **The MAC address must be the capital letter.**

Notice: The MAC address must be the same as the number on the label. Otherwise, it might show the error message “The input MAC is invalid.” after you pressed the “Burn” button.



## Powerline Network

### 4. Press “Burn” button

If the input MAC address is not the same as the number on the label. It might show the error message “The input MAC is invalid.” after you pressed the “Burn” button.

After burned MAC address, the device will restart. Please wait until “Success” showed on “Status:” row. It will also show the new MAC address you changed. Please check it the same as the MAC address on the label or not.

