

# **Web Camera**

**USER GUIDE**

**for**

**PLC Camera**

**Version 1.0**

Chapter One: Introduction.....	2
Features .....	2
Specification.....	2
Package Content.....	3
System Requirement .....	3
Contact information .....	3
Chapter Two: Hardware of PLC camera .....	4
The appearance of PLC camera .....	4
Port and LEDs.....	5
Chapter Three: Connecting PLC Camera .....	6
Local Network (LAN).....	6
World Area Network (WAN) .....	7
Chapter Four: Browser .....	8
Login .....	8
View .....	9
Change Password .....	10
Image Parameter .....	10
Network Configuration .....	11
Chapter Five: Applications.....	13
Chapter Six: FAQ .....	13
Appendix A: Powerline Internet connection .....	14

# Chapter One: Introduction

## Features

- ✧ Easy to install, Plug and Play
- ✧ Remote surveillance via network
- ✧ Embedded Web Server to watch the video over the internet
- ✧ IP assignment via Web Page / Utility. Easy for user to set.
- ✧ Built-in CMOS module provides an All-In-One system
- ✧ Local/Remote Digital Recording
- ✧ Password protection

## Specification

<b>Image</b>	
Sensor	CMOS Image Sensor
Resolution	320x240 / 640x480
Frame rate	1.5-5 fps
Compression	JPEG
ROM	512KB
<b>Networking</b>	
Network Interface	Powerline Communication
Standard	HomePlug1.0.1, IEEE802.3, IEEE802.3u
Protocols	ARP, ICMP, TCP, IP, UDP, HTTP
Network Setting	IP address, Mask IP address, DNS IP address, Gateway IP Address, ADSL PPPoE
Access Control	Password
Access tool	Browser
<b>Electronic</b>	
Power	120VAC/60Hz or 230VAC/50Hz or 220VAC/60Hz

## **Package Content**

- ✧ PLC camera
- ✧ Power Cord

## **System Requirement**

- ✧ Microsoft Windows 98 or later version.
- ✧ Microsoft Internet Explorer 6.0 or later version.
- ✧ JVM 1.3 or later version.

## **Contact information**

Phone (+886-6-6006789 ext.213) for technical support and any other query.

## Chapter Two: Hardware of PLC camera

### The appearance of PLC camera



## Port and LEDs

Transmit LED

Power LED



Power LED: It is ON when a valid connection occurs.

Transmit LED: Blink when PLC camera transmits Packets.

Power Connect



Power Connect: PLC camera Power Cord and communication.

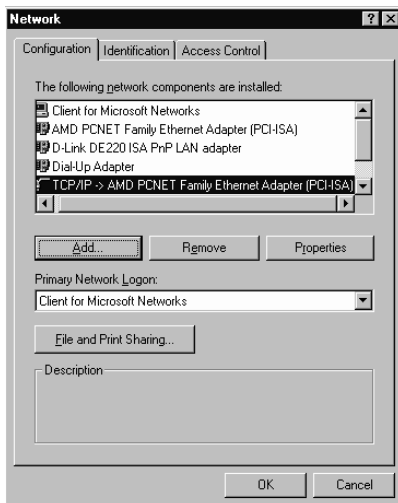
## Chapter Three: Connecting PLC Camera

This Chapter contains step-by-step instruction to connect IP camera to your network.

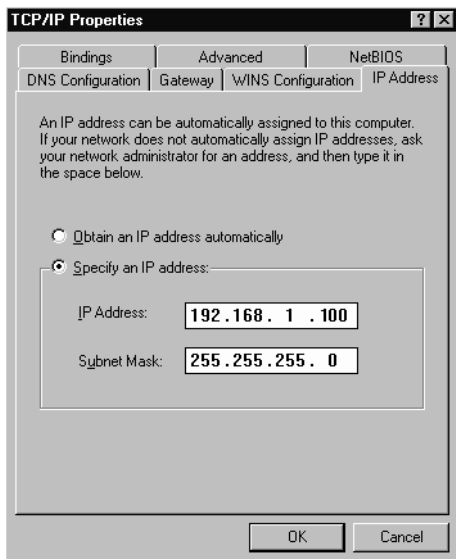
### Local Network (LAN)

1. Connect the power cord to PLC Camera.
2. Plug to the outlet.
3. PLC Camera's default IP address is 192.168.0.114.
4. Connect your Computer to the same PLC network, set the IP in the same network. You should be able to view the image.
5. If the IP address for your PLC Camera and your Computer are different, please change them under the same network (See "Chapter Four", "Network Configuration").
6. Change your IP on your computer.

You can set a fixed value for your IP address. To set a fixed IP, right click on < My Network Place > < Properties >.



7. Click on your TCP/IP protocol then click on < properties >.



Under < Specify an IP address > enter the correct IP address and Subnet mask. Then restart your Network connection.

## World Area Network (WAN)

PLC camera only supports fixed IP and PPPoE. When using fixed IP, you must set proper IP address, Mask address, Gateway address, and DNS address. You can also setting ADSL PPPoE user ID and password to connect to WAN.

If you don't know how to connect to Internet via powerline communication, please refer to Appendix A to see the powerline connection to WAN.

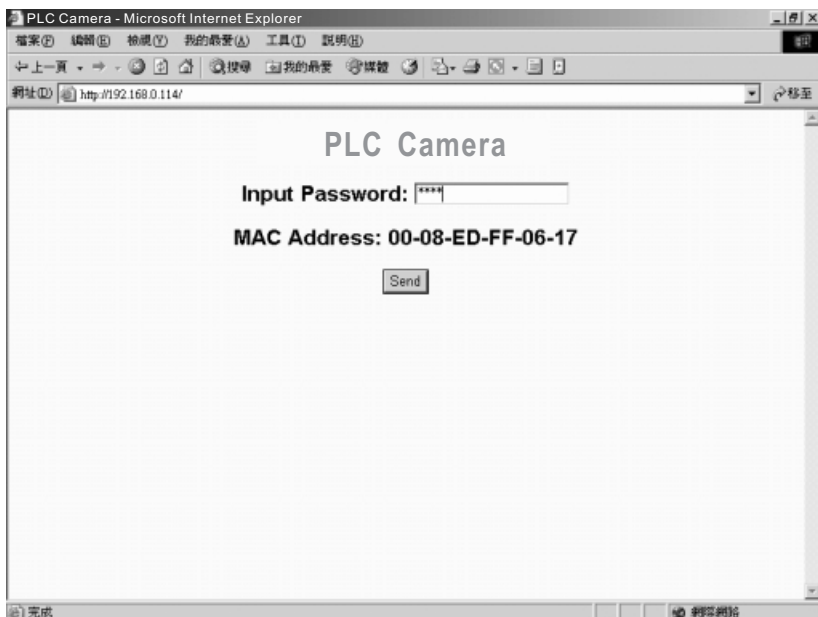


## Chapter Four: Browser

This Chapter contains information about how to configure your PLC camera and how to see the image.

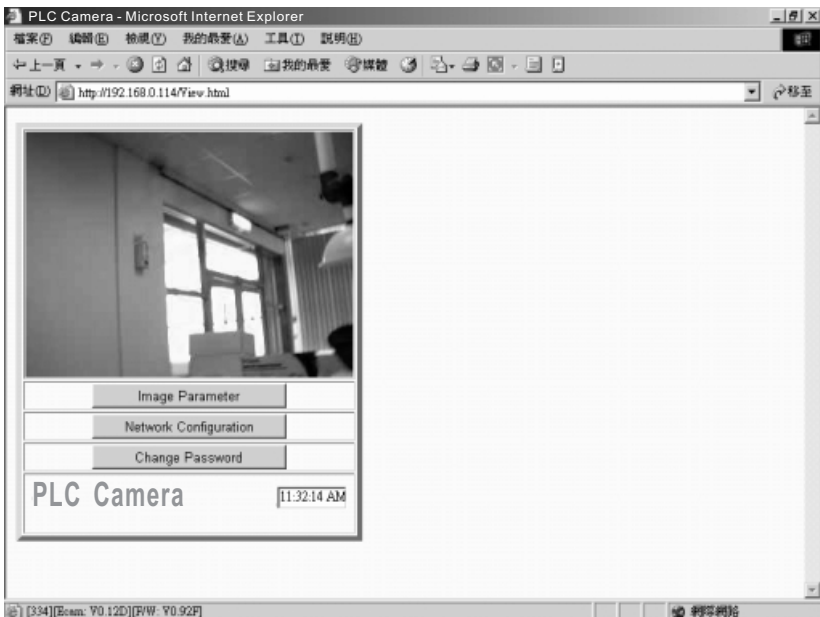
### Login

Entering PLC Camera IP address in your browser, you will be able to access the homepage. If it's the first time you login the homepage, you need to enter "Password". The default Password is "1234". For network security, please change password right now. Only one user can login at the same time.



## View

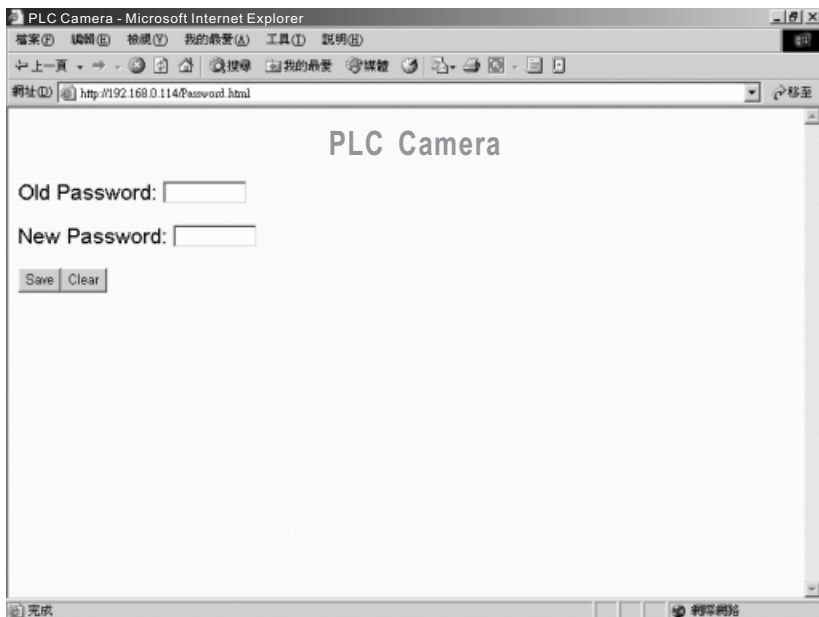
If login is successful, the image and function buttons will be showed in the browser.



1. Show real-time image, or
2. Press "Image Parameter", link to the image parameter setting page.
3. Press "Network Configuration", link to the network configuration setting page.
4. Press "Change Password", link to the password setting page.

## Change Password

Input old password and new password, and then press “Save” button. The password will be changed, and return to View page.



## Image Parameter

Press “Image Parameter” to set image parameters.

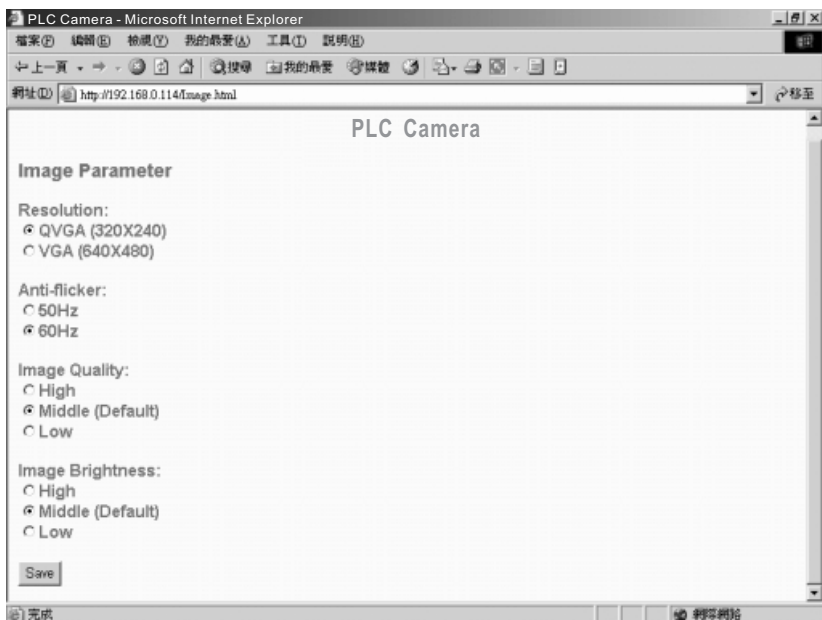
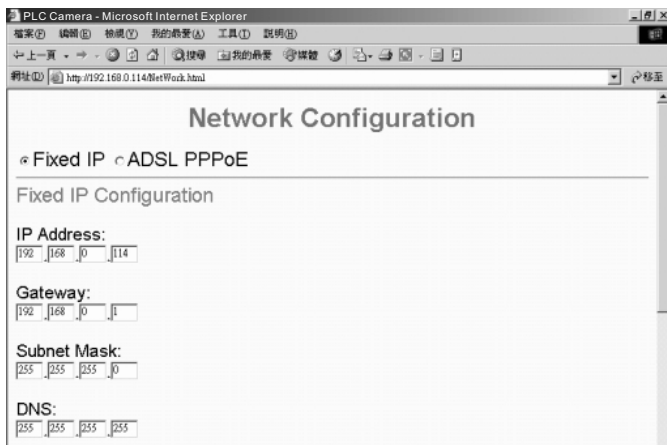


Image parameters include resolution, anti-flicker, quality, and brightness.

## Network Configuration

There are two ways to set network configuration – “Fixed IP” and “ADSL PPPoE”.

1. Fixed IP



If using a fixed IP setting, please select “Fixed IP”, input IP Address, Gateway, Subnet Mask, and DNS. Then press “Save” to change network setting. The new setting takes effect immediately, so you must connect to new IP address.

## 2. ADSL PPPoE



If using ADSL PPPoE, please select “ADSL PPPoE”, input ADSL User's ID, ADSL User's Password, E-mail, and SMTP Mail Server. After pressing “Save” button, IP camera will send a new IP address to the e-mail that you set. Then you can connect to new IP address.

## Chapter Five: Applications

1. Environment surveillance
2. House security
3. Baby/Home care
4. Office

## Chapter Six: FAQ

Q: PLC Camera cannot show image.

A:

1. Reset PLC camera and re-login.
2. Try to set image parameters as QVGA (320x240) and low quality. Sometimes the condition of network is bad, and the image is not complete. The browser only shows complete image.

Q: Sometimes the Network setting doesn't work.

A: Some IP address are reserved – “255.255.255.255”, “0.0.0.0”, “127.0.0.0”, “127.0.0.1” and “X.X.X.255”. You can't use these IP address.

## Appendix A: Powerline Internet connection

If you would like to connect to Internet via powerline, you need to order powerline Ethernet Bridge for the connection. Please refer to the following diagram to configure your installation.

