

Table of Contents

English	1
System Requirement	1
Package Contents	1
Hardware Overview	2
Hard Disk installation	3
Connect & Setup the ALL6500	6
ALL6500 Setup Winzard	7
Advanced Service Setup	9
French	10
German	19
Italian	28

ALL6500 IP Storage Appliance



Quick Installation Guide

System Requirements

To configure the ALLNET ALL6500, you must have a PC equipped with the following:

- A CD-ROM or DVD-ROM drive
- An Ethernet port connected to a network hub or switch
- Microsoft Windows XP, 2000, ME, Linux OS or Apple Mac OS X
- Microsoft Internet Explorer 6.0, Firefox 1.0.4, or Safari 1.3 web browser

Package Contents

- One (1) ALLNET ALL6500
- One (1) Accessory Pack:
 - * One (1) power cord
 - * Two (2) RJ-45 Ethernet cables
 - * Twelve (12) hard disk screws
 - * One (1) installation CD
 - * Quick installation guide



Hardware Overview

ALL6500 Front Panel

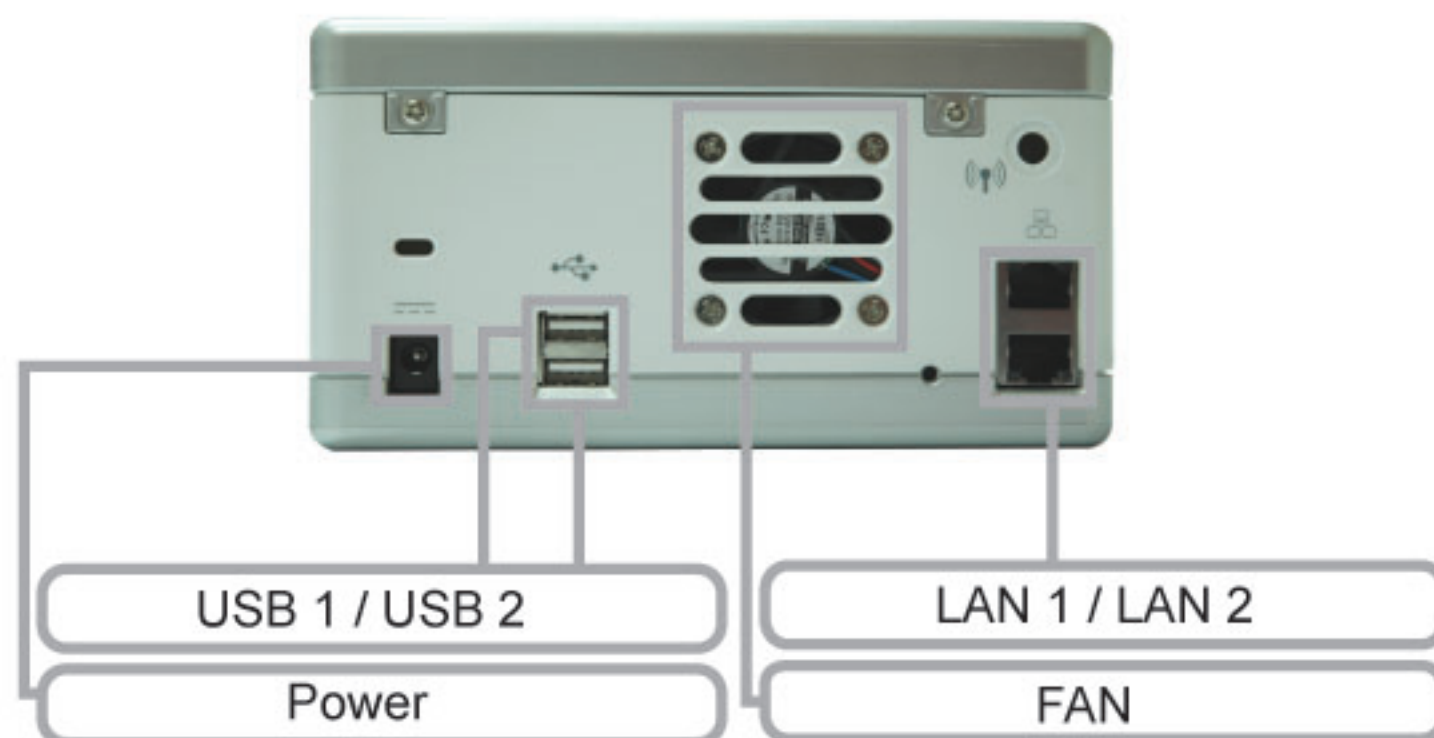


Power

USB

ALL6500 Back Panel

LAN 1/LAN 2: High speed connections to your network hub/switch.
Power Socket: Connect power cord, ideally from a surge protector.








USB 1 / USB 2

LAN 1 / LAN 2

Power

FAN

Power LED		Blue: System power on
	System Status LED	Blinking orange: System startup Blinking red: System error Off: System startup complete; system operating normally
	HDD 1 LED (blue/red)	Blue: HDD 1 detected Blinking blue: Active HDD 1 data transfer Red : HDD 1 error detected Blinking red: HDD 1 capacity is nearly full (90% or more) * If RAID is configured, capacity is based on the entire RAID system.
	HDD 2 LED (blue/red)	Blue: HDD 2 detected Blinking blue: Active HDD 2 data transfer Red : HDD 2 error detected Blinking red: HDD 2 capacity is nearly full (90% or more) * If RAID is configured, capacity is based on the entire RAID system.
One-Button USB Copy		Push the button to copy entire USB volume to the ALL6500. Files are stored in a folder named by current time stamp: (YearMonthDayHHMM)
	LAN 2 LED (green)	Green: Network connected Blinking green: Network activity
	LAN 2 LED (green)	Green: Network connected Blinking green: Network activity
	USB LED	USB Device Connection: Blinking blue (5 seconds) : USB device connected successfully. *For universal USB memory card reader, USB LED will blink blue when one or more card is mounted successfully. Blinking red (5 seconds) : USB device connection failure Data Transfer: Blinking blue: Active data transfer Blinking red: USB device read/write error

USB Port: USB 2.0 port for USB storage expansion.
Power Button: Turn on/off ALL6500.
USB Copy Button: Automatically copy entire USB storage content to the ALL6500.

Hard Disk Installation

The ALL6500 supports up to two Serial ATA (SATA) hard disks.
To install hard disks into the ALL6500, please follow the diagrams below:

Remove two screws located on the back of the unit using a Philips screwdriver.

STEP 1



Unscrew four mounting screws.

STEP
2



Lift up the hard disk tray by pulling up the top panel of the ALL6500.

STEP
3



Carefully insert a standard 3.5" SATA hard disk into the tray, and secure the hard disk with screws from the included accessory pack.

STEP
4



If you are installing two hard disks, please insert the second hard disk at the bottom of the tray and secure it with screws from the included accessory pack.

STEP
5



Carefully lower the hard disk tray back into the ALL6500.

STEP
6



After making sure the tray is in place and the connectors are aligned, secure the hard disk tray with screws.

STEP
7



Connect & Setup the ALL6500

Connect the first Ethernet port (LAN 1) to your network hub/router.

**STEP
1**



Plug in the power cord and turn on the system.

**STEP
2**



Make sure system is running properly by checking all front panel LEDs for any error indications.

**STEP
3**



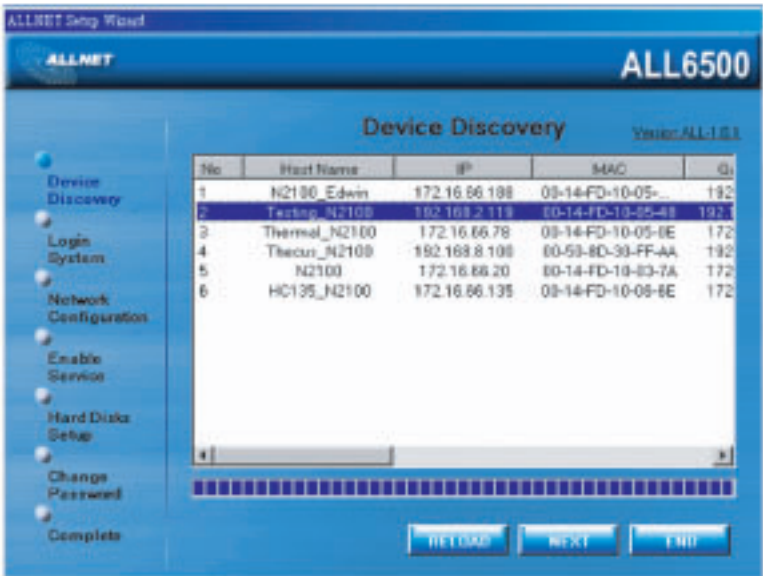
ALL6500 Setup Wizard

1. Insert the installation CD into your CD-ROM drive (host PC must have connection to the above network).
2. The Setup Wizard should launch automatically. If not, please browse your CD-ROM drive and double click on Setup.exe
3. The Setup Wizard will start and automatically detect all ALL6500s on your network. If none are found, please check your connection and refer to the Troubleshooting Guide at the back of the ALL6500 User's Manual.

STEP 1

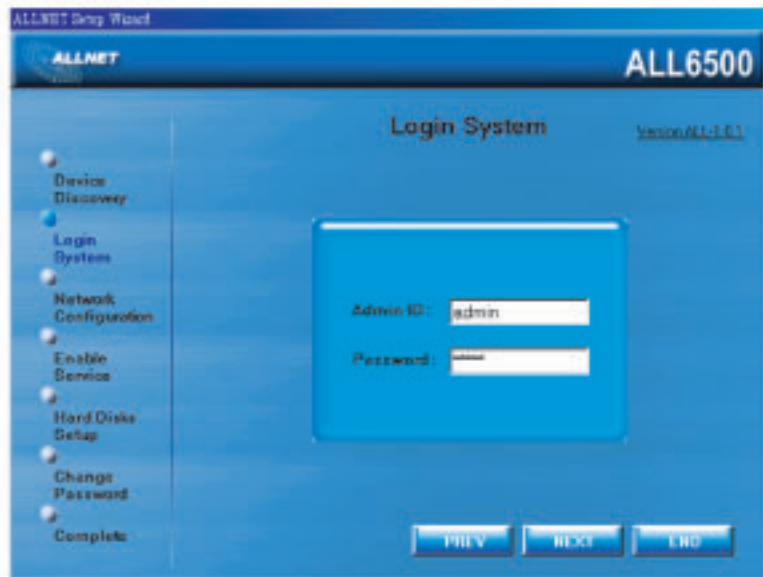


STEP 2



5. Login with the default administrator account and password. The default account and password are both "admin".

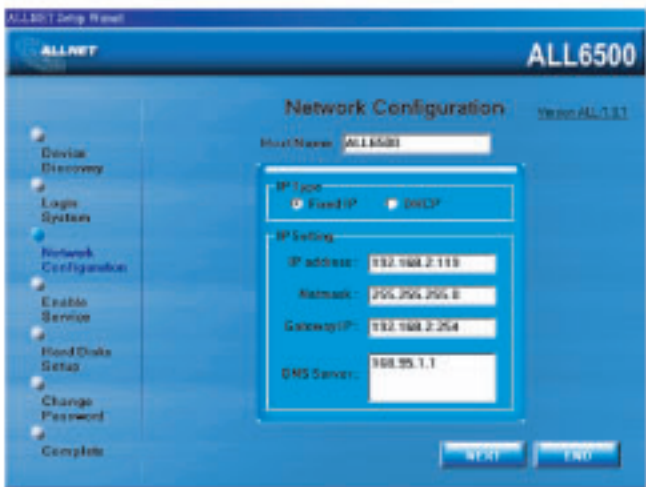
STEP 3



6. Name your ALL6500 system and configure the network IP address. If your router is configured as a DHCP Server, configuring the ALL6500 to automatically obtain an IP address is recommended. You may also use a static IP address and enter the DNS Server address manually.

STEP

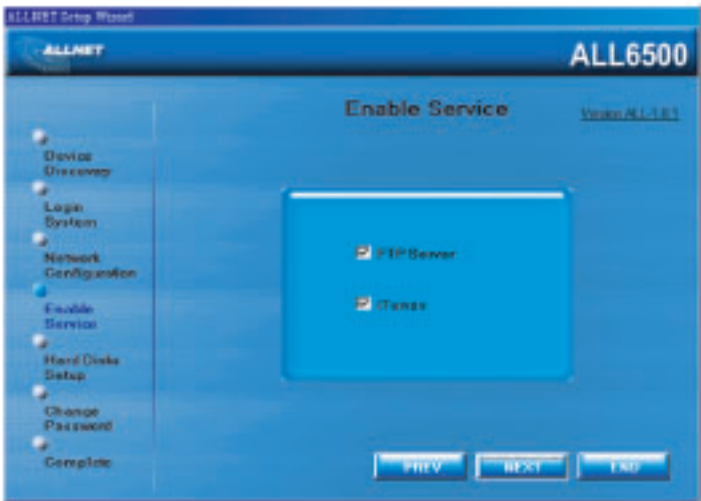
4



7. Enable the services you wish to make publicly accessible. The ALL6500 offers FTP Server and iTunes® Server.

STEP

5



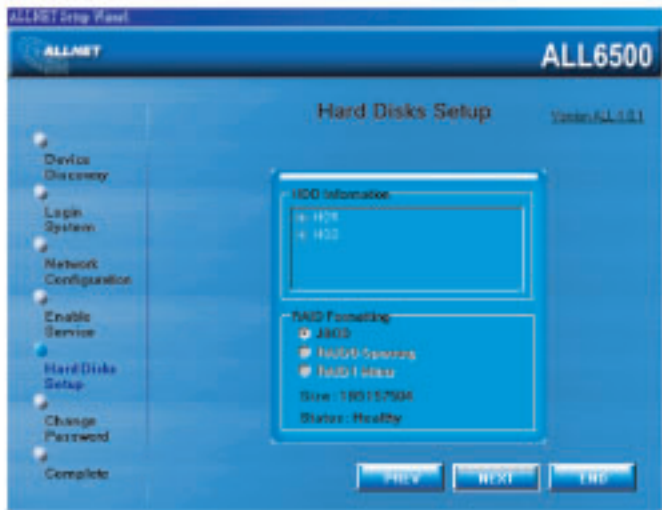
8. Refer to the following chart and select the hard disk configuration that best suits your usage model.

STEP

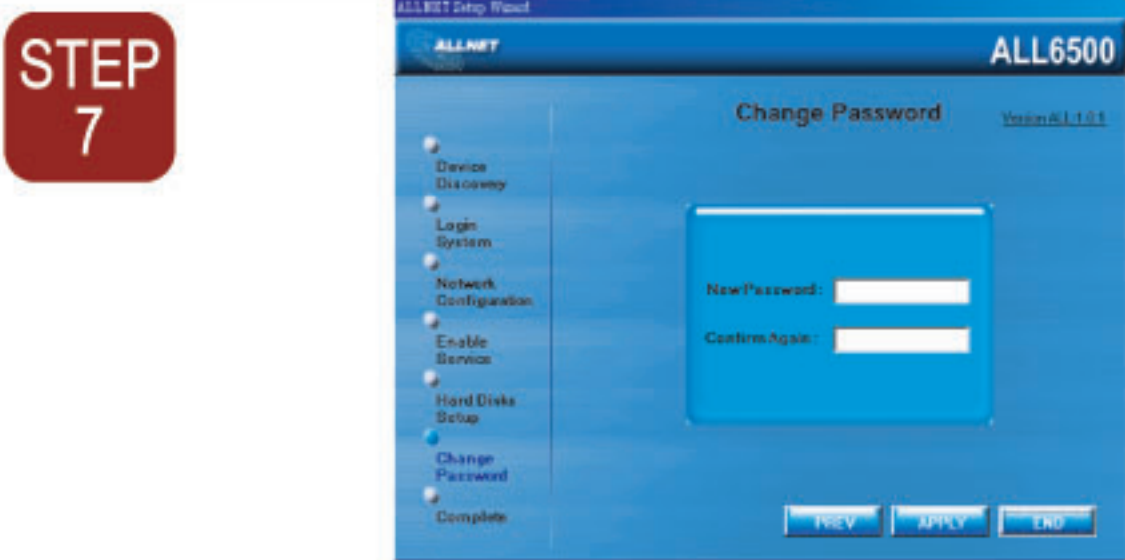
6

Setup Options	High Performance	Increased Reliability
1 Disk JBOD	No	No
2 Disk RAID 0	Yes	No
2 Disk RAID 1	Yes	Yes
2 Disk JBOD	No	No

- RAID 0 - Spanning: Combine 2 physical hard disks into one or more logical drives. Data is separated into threads and stored across both physical drives.
- RAID 1 - Mirroring: Use the 2nd hard disk as a mirror image of the 1st hard disk for increased reliability.
- JBOD - Expansion: Similar to RAID 0, but files are stored in whole on any available hard disks.



9. Change the default administrator password.



10. Finished! Access the current ALL6500 administrator webpage by pressing the “Web Management” button. You can also configure another ALL6500 at this point.



Advanced Service Setup

Photo Web Server

The ALL6500 has a built-in Photo Web Server that enables the sharing of personal photos anywhere on the network. Users can share photos with anyone or specific users using an access control list.

FTP

The ALL6500 can act as an FTP Server, enabling users to share files with their favorite FTP programs.

iTunes®

The ALL6500 has a built-in iTunes® service that allows users to hare and play digital music. PCs installed with iTunes® can playback music stored on the ALL6500.