



ALL2212 & ALL2213

Guide for CMS "IPCamClient"

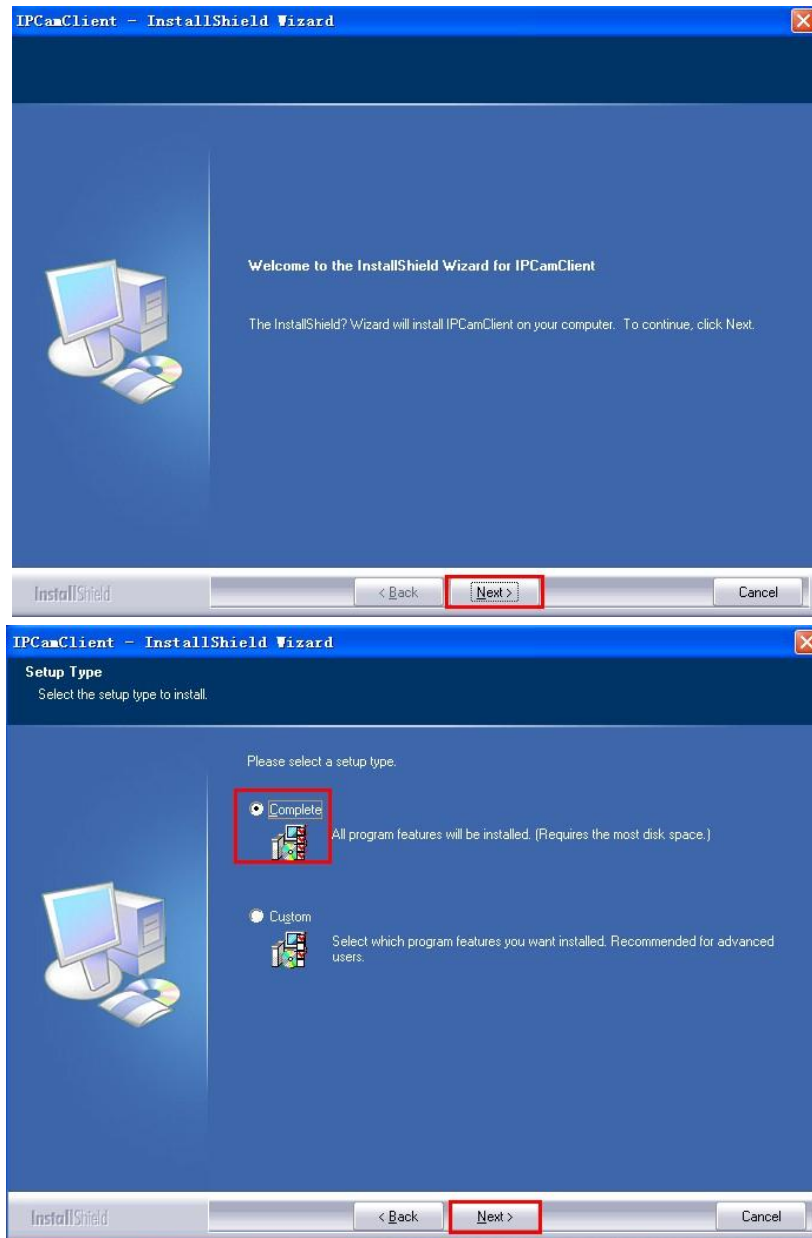


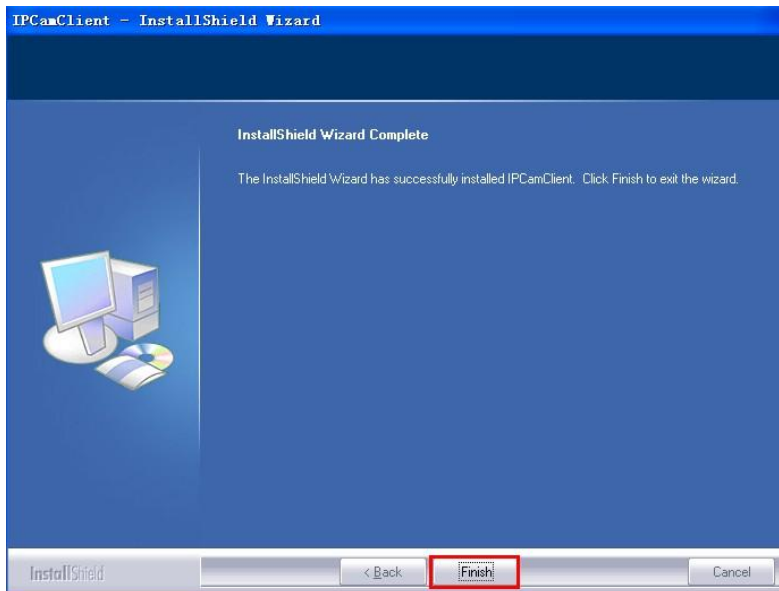
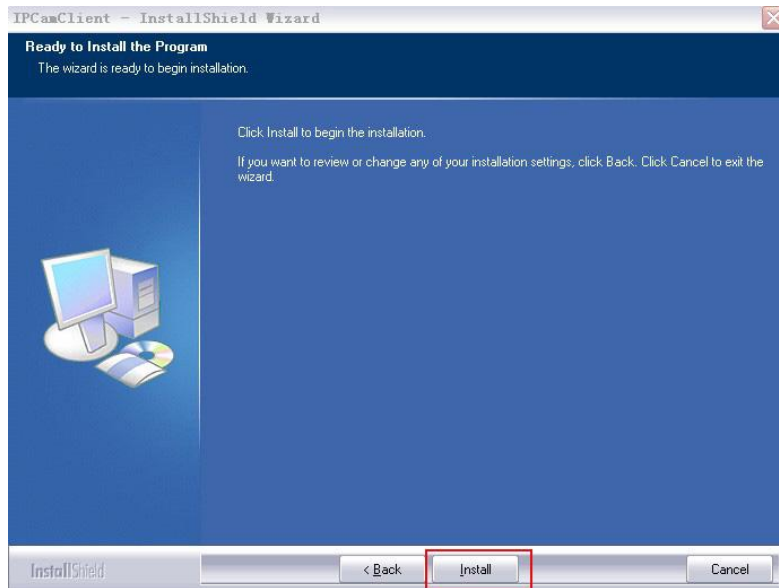
1. INSTALLATION

NOTE: This IPCamClient software matches with ALL2212 and ALL2213 IP cameras.

Before installation, please kindly turn off the firewall and Antivirus software of the computer connected, so that this software can be installed completely and successfully. Please don't worry, it's safe and won't bring any problem to your computer.

After installation, If there is clue for restarting the computer, please just do it, then you can use the IPCamClient software.





2. SOFTWARE OPERATION

2.1.Login



Double click the IPCamClient icon, you will see the login interface as below, choose language:



Enter the username and password. The default username is **admin**, default password is **admin**; then click **OK** to login:




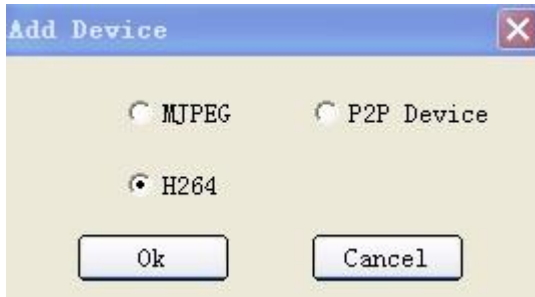
After login, will pop-up the software interface as below:



3. HOW TO ADD CAMERA

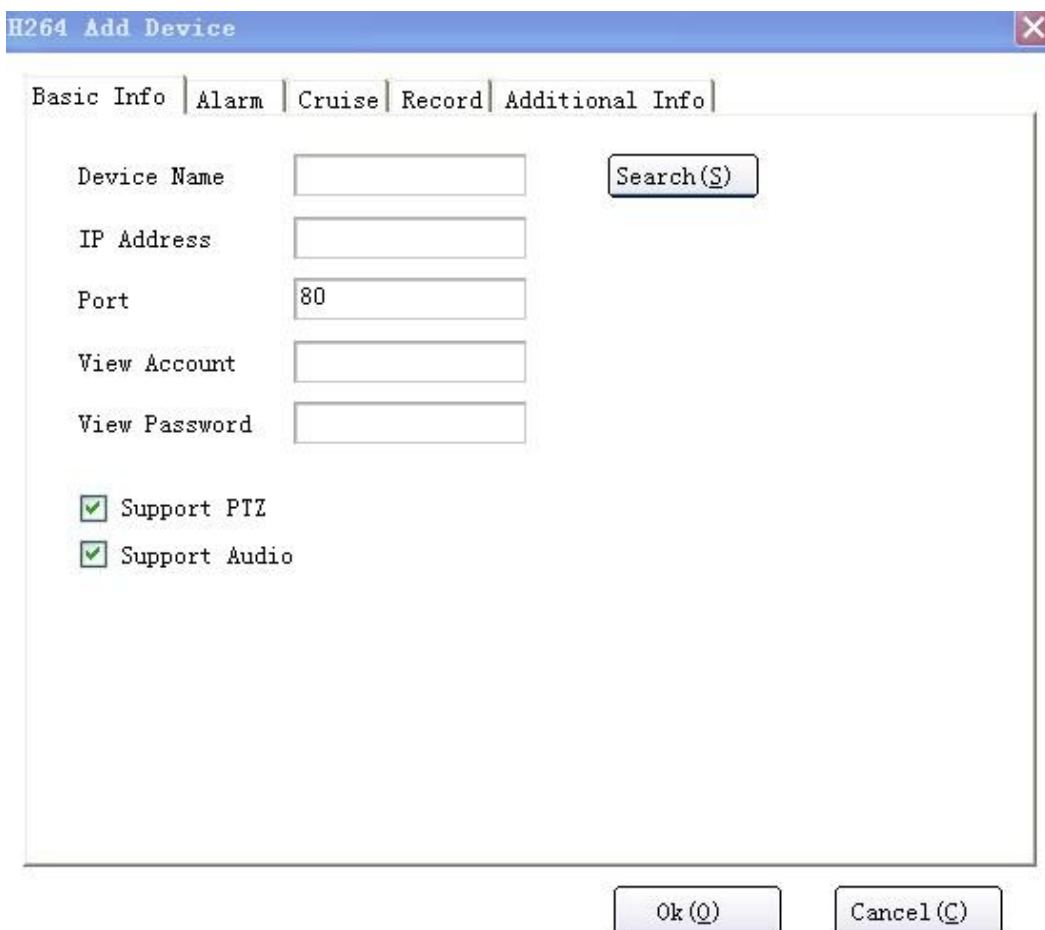
3.1 Add Camera by H.264 for local view

Click , will pop-up the window as below:



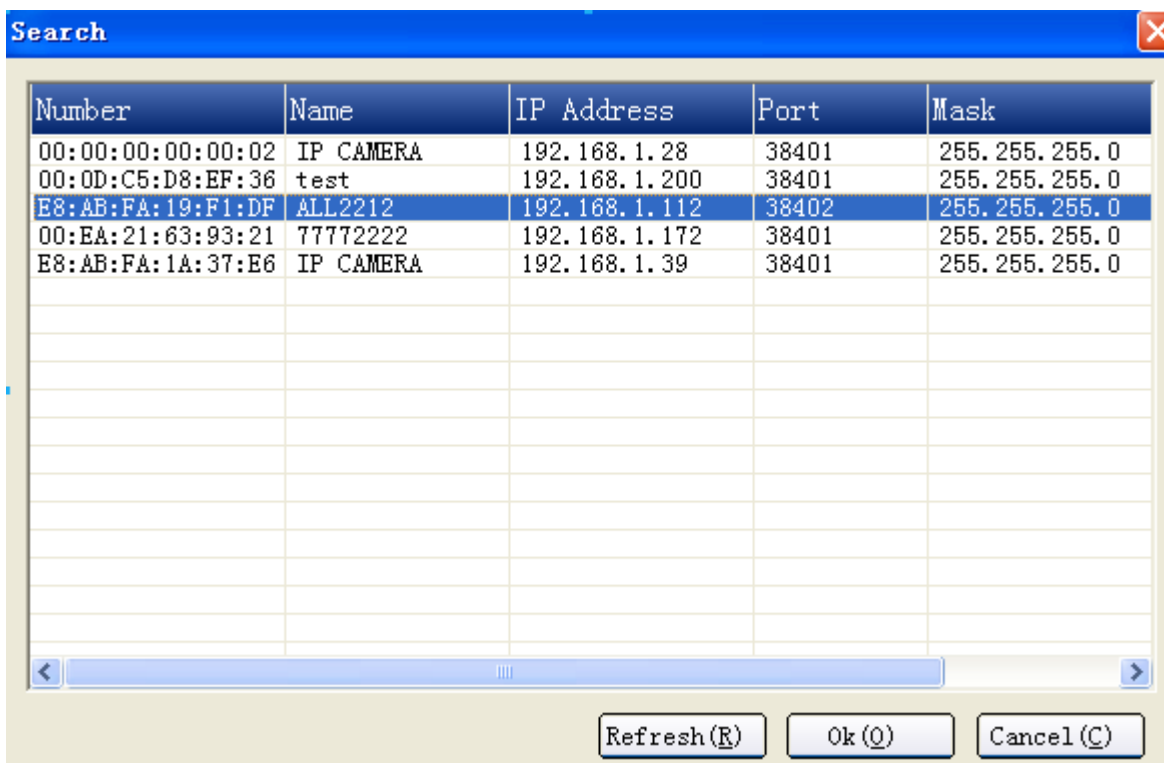
A small dialog box titled "Add Device" with a close button (X) in the top right corner. It contains three radio button options: "MJPEG", "P2P Device", and "H264". The "H264" option is selected. At the bottom, there are two buttons: "Ok" and "Cancel".

Choose **H264**, then click **OK**, will pop-up the window as below:



A larger dialog box titled "H264 Add Device" with a close button (X) in the top right corner. It has a tabbed interface with tabs for "Basic Info", "Alarm", "Cruise", "Record", and "Additional Info". The "Basic Info" tab is active. It contains several input fields: "Device Name", "IP Address", "Port" (with "80" entered), "View Account", and "View Password". There is a "Search(S)" button next to the "Device Name" field. At the bottom, there are two checked checkboxes: "Support PTZ" and "Support Audio". At the very bottom of the dialog are "Ok (O)" and "Cancel (C)" buttons.

Click **Search**, will pop-up the window as below:



The 'Search' window displays a table with the following data:

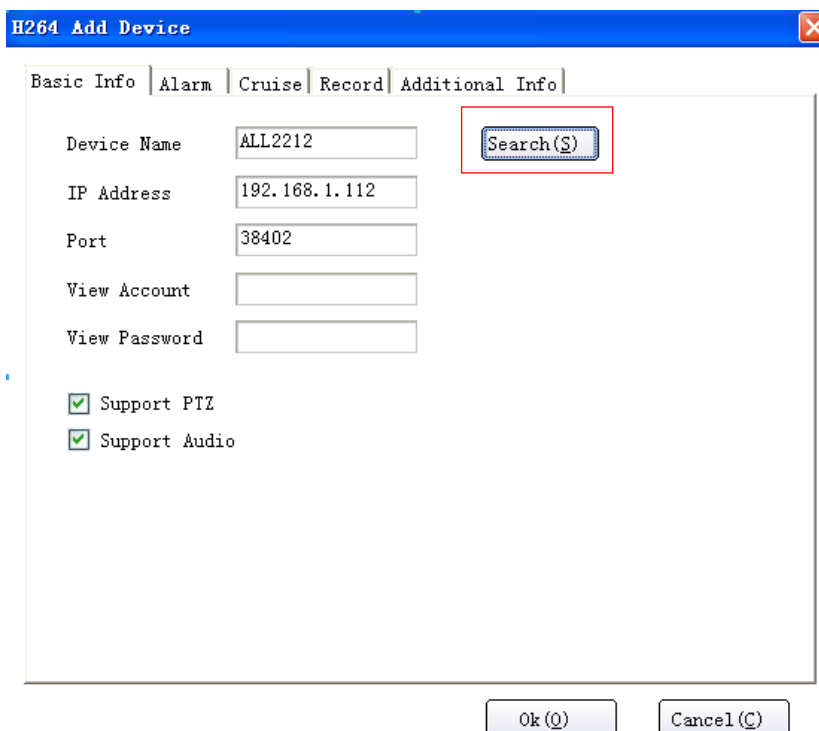
Number	Name	IP Address	Port	Mask
00:00:00:00:00:02	IP CAMERA	192.168.1.28	38401	255.255.255.0
00:0D:C5:D8:EF:36	test	192.168.1.200	38401	255.255.255.0
E8:AB:FA:19:F1:DF	ALL2212	192.168.1.112	38402	255.255.255.0
00:EA:21:63:93:21	77772222	192.168.1.172	38401	255.255.255.0
E8:AB:FA:1A:37:E6	IP CAMERA	192.168.1.39	38401	255.255.255.0

At the bottom of the window are three buttons: 'Refresh(R)', 'Ok(O)', and 'Cancel(C)'.

If there is no cameras listed, please click **Refresh**.

If there is still no cameras listed, maybe your computer's IP address doesn't match with the camera's IP address, they are not in the same LAN. Please change the computer's IP address to the same LAN as camera's.

Click the IP camera that is searched ,Click **OK**, show the window as below:



The 'H264 Add Device' window has tabs for 'Basic Info', 'Alarm', 'Cruise', 'Record', and 'Additional Info'. The 'Basic Info' tab is active, showing the following fields:

- Device Name: ALL2212
- IP Address: 192.168.1.112
- Port: 38402
- View Account: (empty)
- View Password: (empty)
- ☒ Support PTZ
- ☒ Support Audio

A red box highlights the 'Search(S)' button next to the Device Name field. At the bottom of the window are two buttons: 'Ok(O)' and 'Cancel(C)'.

Device Name: Name the camera as you want,for example, ALL2212

IP Address: The LAN IP address

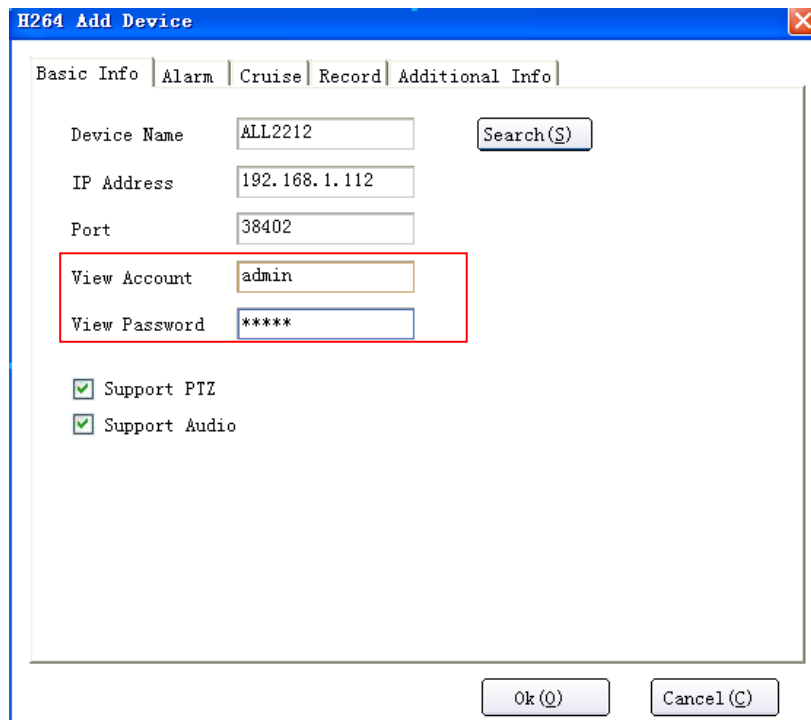
Port: Data Port of the camera

View Account: Default is **admin**

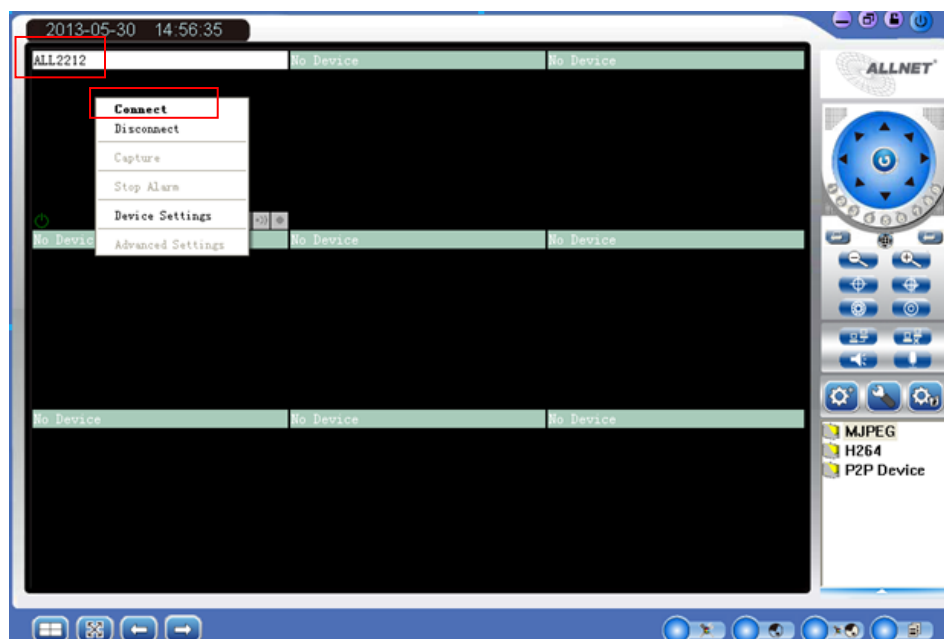
View Password: Default is **admin**

Support PTZ: Enable it to active Pan/Tilt/Zoom.

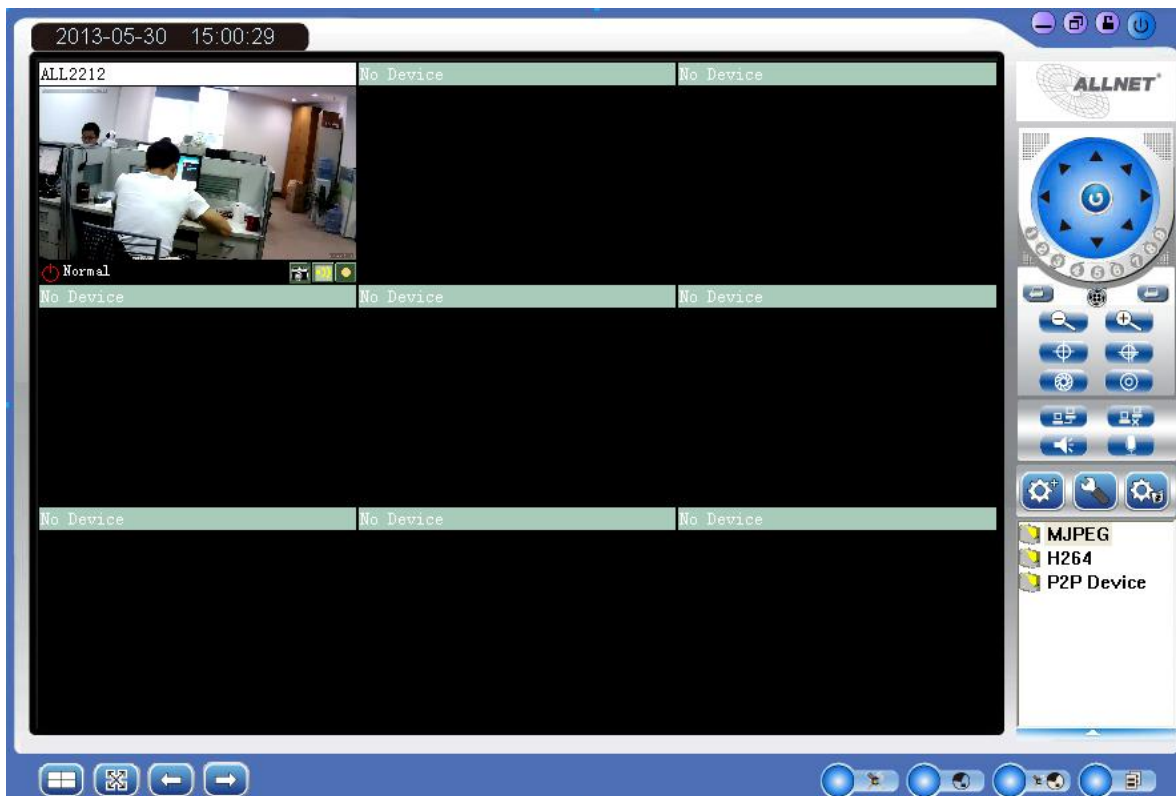
Support Audio: Enable it to active the audio function




Then click **ok**,you will see the camera in the CMS list.

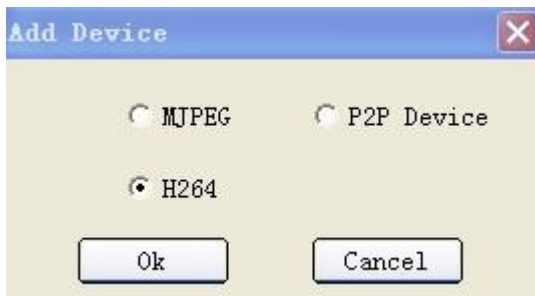


Right click **connect**,then you will see the video.



To remote view camera by DDNS(show in WEB UI),need port forwarding through router firstly.

Click , will pop-up the window as below:



Choose **H264**, then click **ok**

Name the camera as you want.

Input IP Address with DDNS,(if DDNS is <http://m4339.xipcam.com:112>, just need to input m4339.xipcam.com,

Input Port with Data Port(show in the searching tool),for example 38402

Input View Account and Vies Password,both default is **admin**.

H264 Add Device [X]

Basic Info | Alarm | Cruise | Record | Additional Info

Device Name: ALL2212 [Search(S)]

IP Address: m4339.xipcam.com

Port: 38402

View Account: admin

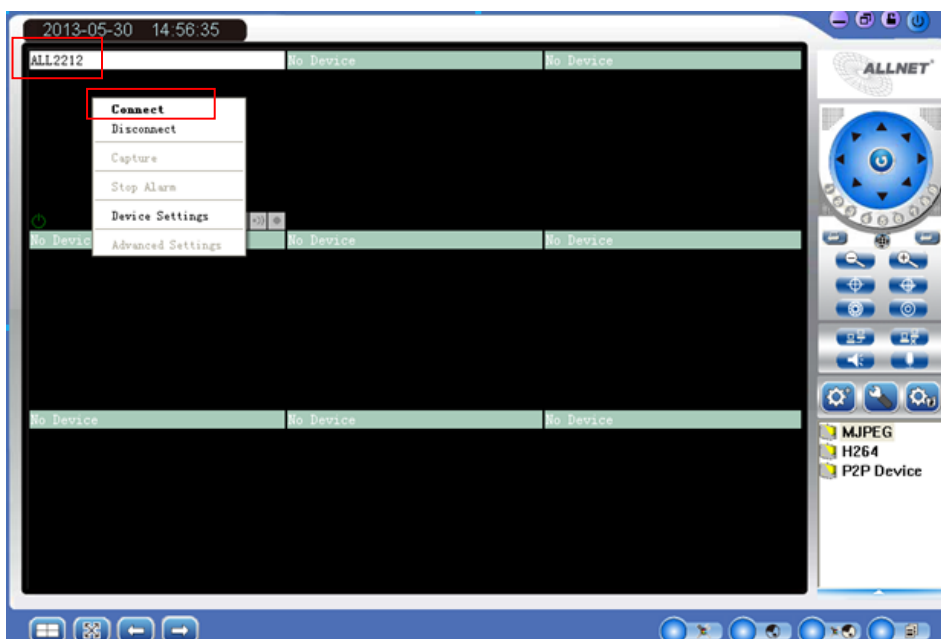
View Password: *****

☒ Support PTZ

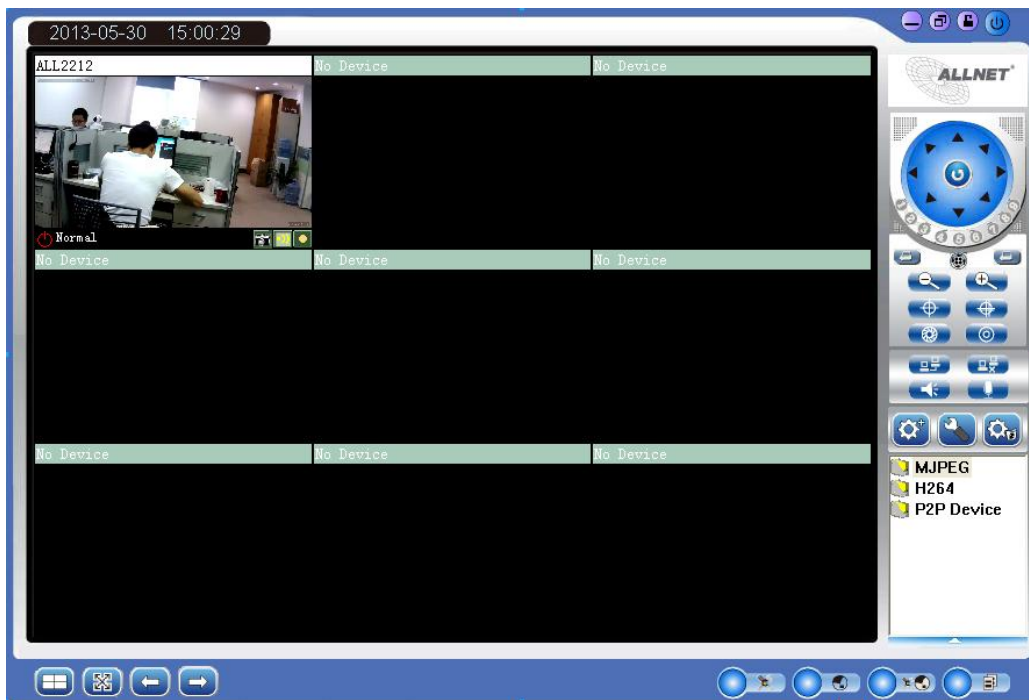
☒ Support Audio

Ok (O) Cancel (C)


Then click **ok**,you will see the camera in the CMS list.

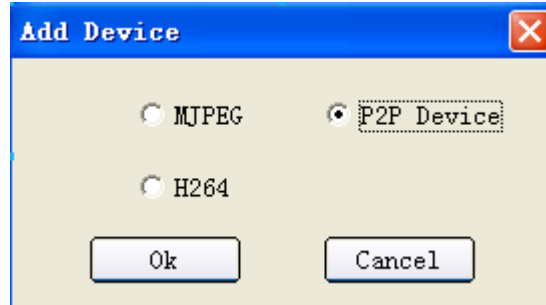


Right click **connect**,then you will see the video.



3.2 Add Device by P2P for both local and remote view

Click , will pop-up the window as below:



Choose **P2P Device**, then click **OK**, will pop-up the window as below:

P2P Device Add Device

Basic Info | Alarm | Cruise | Record | Additional Info

Device Name:

Device ID:

Port:

View Account:

View Password:

☒ Support PTZ

☒ Support Audio

☐ Flip Image

☐ Mirror Horizontal

Search(S)

Ok(O) Cancel(C)

Click **Search**, will pop-up the result:

[illegible]

Click the IP camera that is searched ,Click **OK**, show the window as below:

P2P Device Add Device [X]

Basic Info | Alarm | Cruise | Record | Additional Info

Device Name: ALL2212 [Search(S)]

Device ID: C0000TNP9GU78NPPW

Port: 26375

View Account:

View Password:

☒ Support PTZ

☒ Support Audio

Ok (O) Cancel (C)

Device Name: Name the camera as you want,for example.ALL2212

Device ID: P2P ID number

Port: The port of the camera.

View Account: Default is **admin**

View Password: Default is no **000000**

Support PTZ: Enable it to active Pan/Tilt/Zoom.

Support Audio: Enable it to active the audio function

P2P Device Add Device [X]

Basic Info | Alarm | Cruise | Record | Additional Info

Device Name: ALL2212 [Search(S)]

Device ID: C0000TNP9GU78NPPW

Port: 24109

View Account: admin

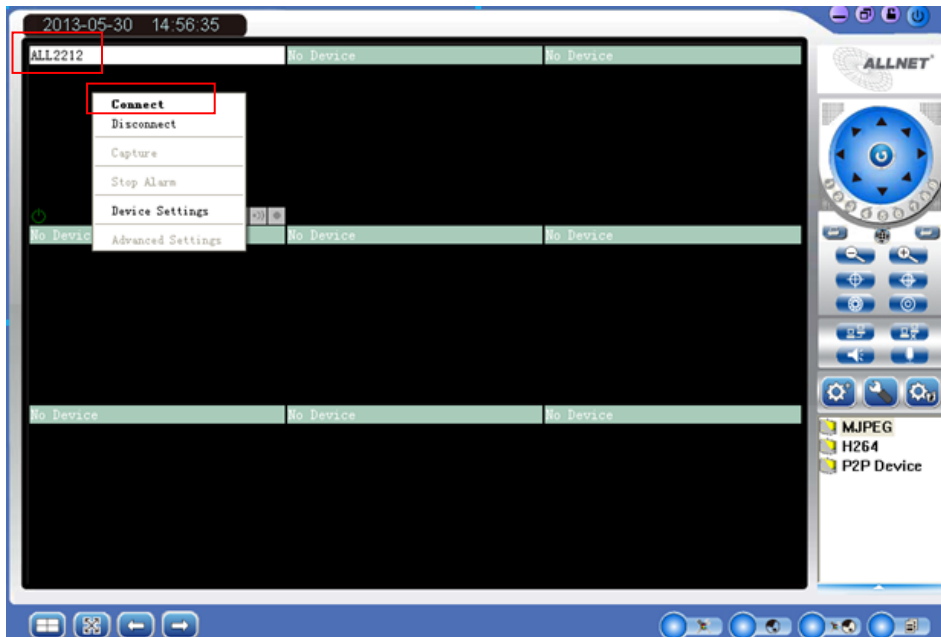
View Password: *****

☒ Support PTZ

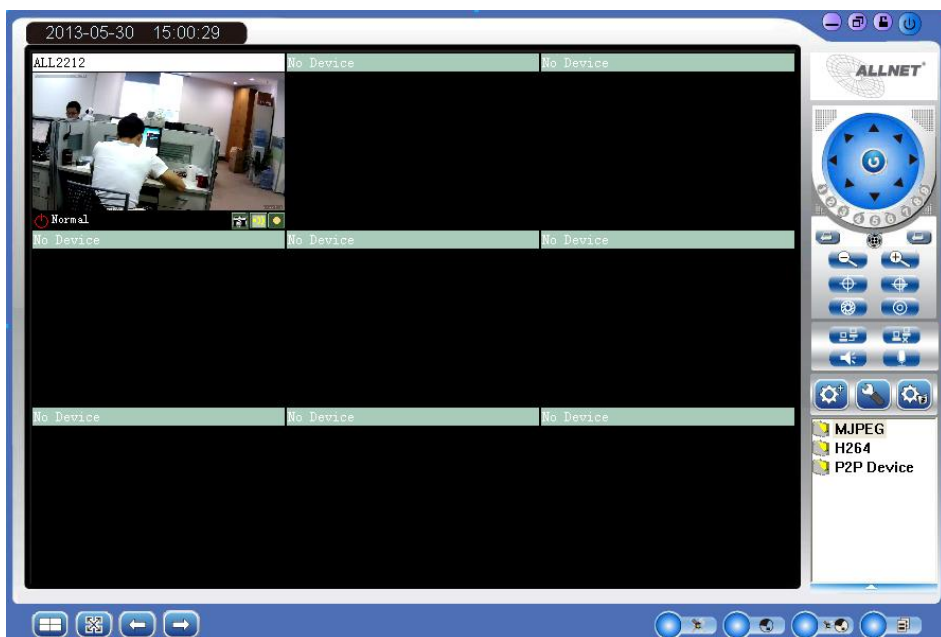
☒ Support Audio

Ok (O) Cancel (C)

Then click **ok**,you will see the camera in the CMS list.



Right click **connect**,then you will see the video.



Add more cameras, do the same steps.

4. For Multi-windows



: Click,it will pop-up the multi-windows options.

1 Window
4 Windows
9 Windows
16 Windows
36 Windows
64 Windows



|: Click it to turn to the full screen, double click the screen or press the **Esc** on the keyboard to back to normal.



: Click it to page up/down.

5. System Settings

Basic Settings
User Settings
Device List
Search File



System Setting: Click, it will pop-up the system setting options as

5.1 Basic Settings:

Click it to login the basic settings interface as below:

5.1.1 Record:

1. **Add/Delete:** Click it to set/delete the path for record files saved.
2. **Record file length:** Click it to set the length for every record file, could be 30/60/120/180/300 minutes.
3. **MJPEG add timestamp on record:** Select it to enable the function.
4. **MJPEG compressed into MPEG-4 format:** Select it to enable the function, will save the space for

recording files.

5. **Automatically covered once recording space is full:** Select it, once the hardisk is full, it will re-cover automatically.

5.1.2 Capture:



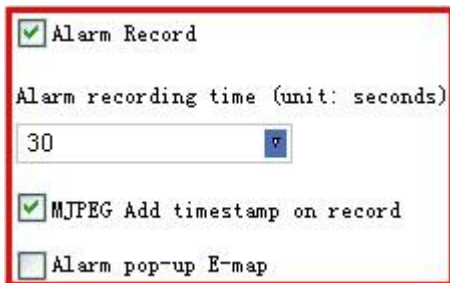
C:\Picture

Add Delete

☒ Open the folder when capture image

1. **Add/Delete:** Click it to set/delete the path for snapshot files saved.
2. **Open the folder when capture image:** Select it, will pop-up the folder when capture image saved.

5.1.3 Alarm:



☒ Alarm Record

Alarm recording time (unit: seconds)

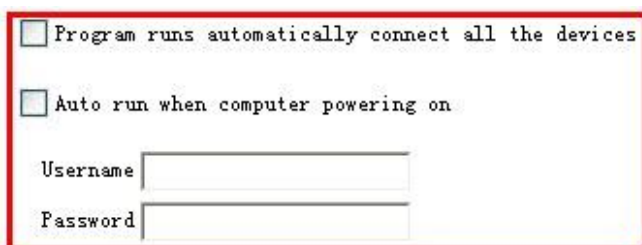
30

☒ MJPEG Add timestamp on record

☐ Alarm pop-up E-map

1. **Alarm Record:** Select it to active record function once alarmed.
2. **Alarm recording time:** Set the duration for every alarm, could be 30/60/120/180/300 seconds.
3. **MJPEG add timestamp on record:** Select it to enable the function.
4. **Alarm pop-up E-map:** Select it to enable the function, will pop-up the E-map which set successfully already once alarmed.

5.1.4 Auto run



☐ Program runs automatically connect all the devices

☐ Auto run when computer powering on

Username

Password

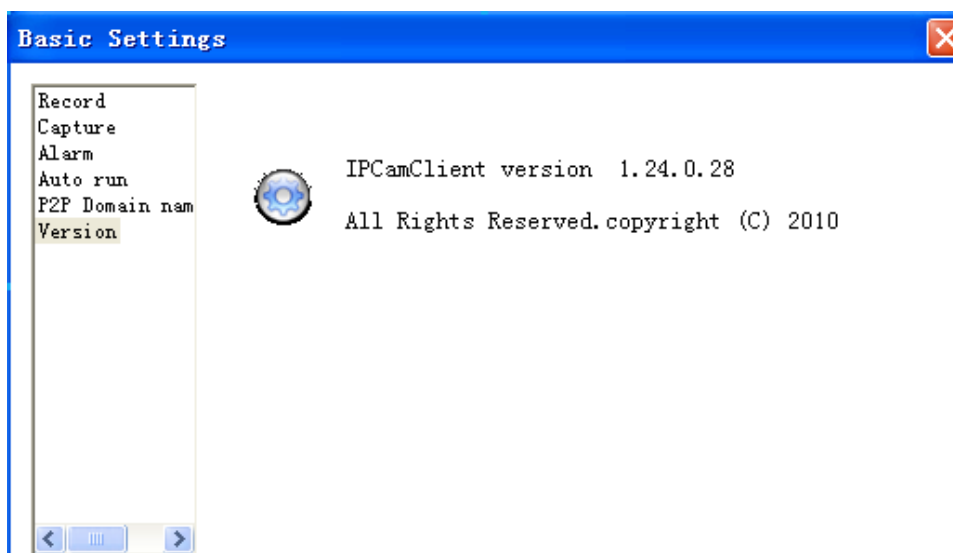
1. **Program runs automatically connect all the devices:** Select it, once running the program, will connect all the devices which set successfully already automatically.
2. **Auto run when computer powering on:** Select it, once start the computer, this software will run automatically. Users can save the username and password here in advance.

5.1.5 P2P Domain name server

Click it see the P2P Domain name server



5.1.6 Version



Click **Version** to get the version details of this software.

5.2 User Settings

Click it to login the user settings interface as below:

[illegible]

Click **Add** to set user accounts.

A screenshot of a Windows-style dialog box titled "Add". The dialog has a blue title bar with a red "X" button in the top right corner. The main area has a light beige background. It contains three text input fields, each preceded by a label: "Username", "Password", and "Confirm". At the bottom, there are two buttons: "Ok" and "Cancel".

Fill in the username, password, click OK to submit.

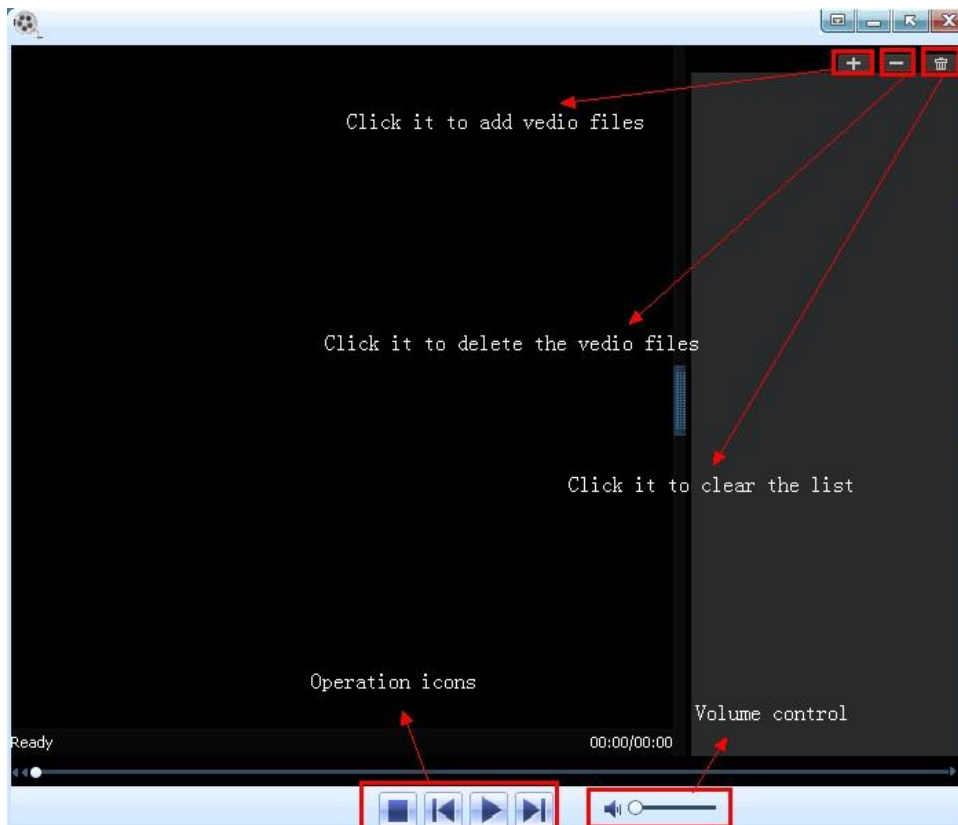
5.3 Device List

Click it will show all the device connected as below:

[illegible]

5.4 Search File (Playback)

Click it will pop-up the search file interface as below:



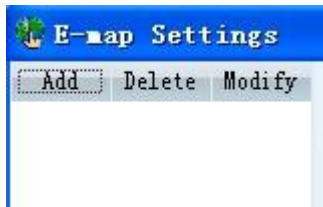
6. For E-map



: **Show Map**: Click it will pop-up the E-map which has been set successfully already.



: **Set Map**: Click it will pop-up the E-map settings interface.



Add: Click it to add new map, will pop-up the window as below, set the map name and browse the map to active it.



NOTE: Only support “.bmp” format images.

Delete: Choose the map firstly, click delete to remove the map.

Modify: Choose the map firstly, click modify to change/modify the map.

Map settings: pls kindly note that you need to set the map in your LAN network before using map function.

7. Log



: **Search Log**: Click it to search the log record of the software.

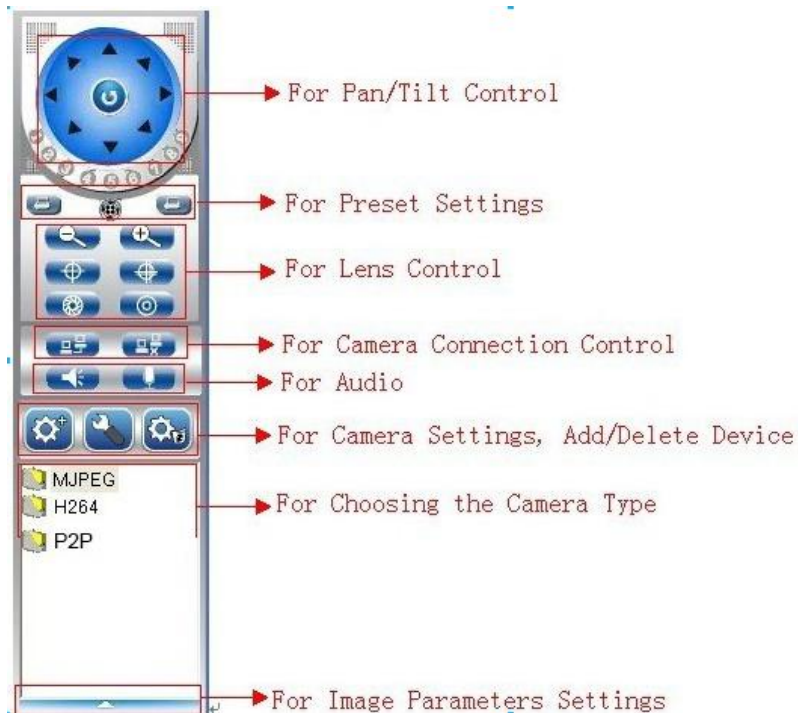
8. Software Interface Operation



: From left to right, means:

1. Minimize the program interface.
2. Maximization the program interface.
3. Lock/Unlock the program.
4. Close the software.

9. For Rightside Panel Icons



NOTE: Some icons may not work depends on your camera.

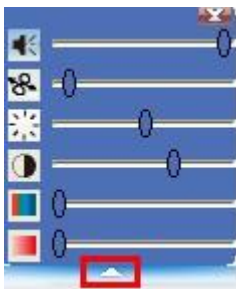
Please choose the type which match with your IP camera.

MJPEG: For MJPEG format IP Cameras.

H.264: For H.264 format IP Cameras.


P2P: For P2P IP Cameras

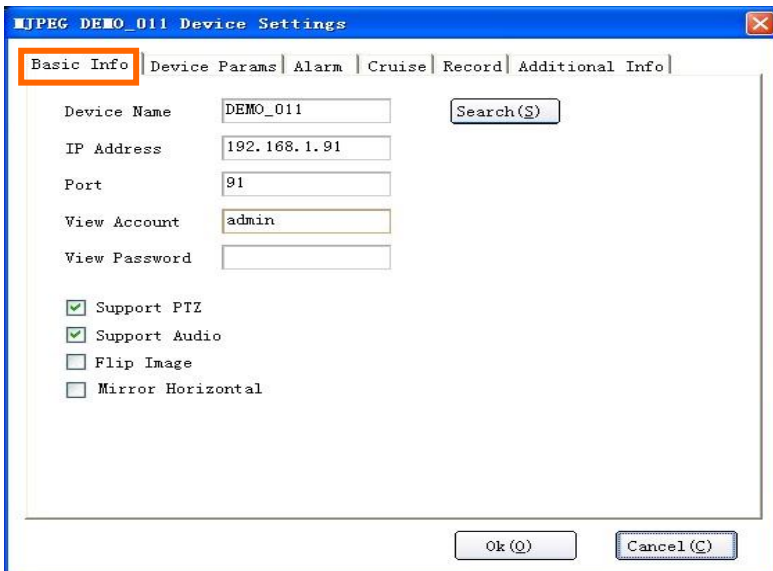
Click the arrow at the bottom, will pop-up the image parameter settings:



10 Device Settings

10.1 Basic Info.

Click , or right click on the channel window, choose “Device Settings”, will pop-up the window showing the basic info for this camera as below:

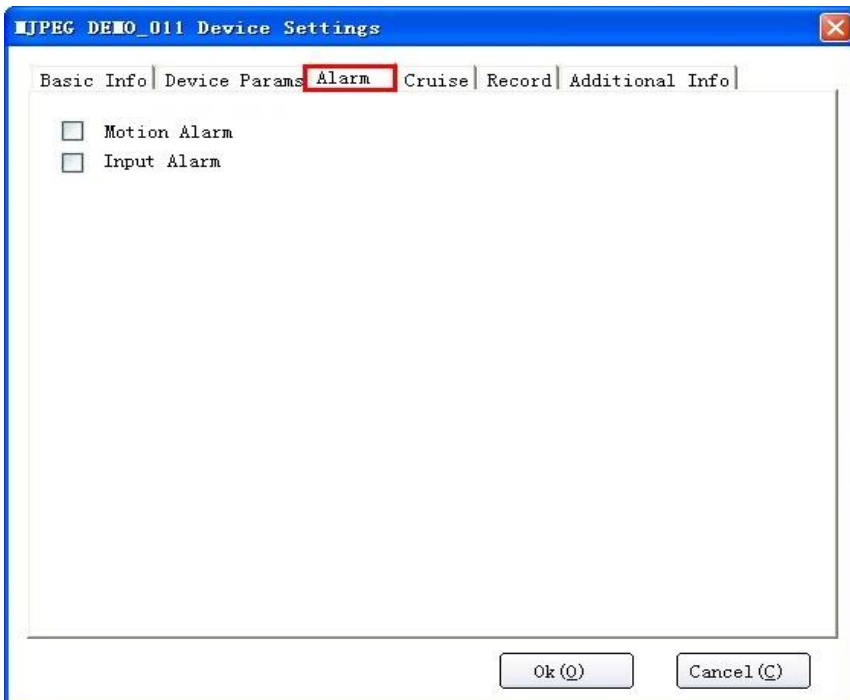


The screenshot shows the 'JPEG DEMO_011 Device Settings' window with the 'Basic Info' tab selected. The tab is highlighted with an orange box. The window contains the following fields and options:

- Device Name: DEMO_011
- IP Address: 192.168.1.91
- Port: 91
- View Account: admin
- View Password: (empty)
- Search(S) button
- Support PTZ: ☒
- Support Audio: ☒
- Flip Image: ☐
- Mirror Horizontal: ☐
- Ok (O) and Cancel (C) buttons at the bottom.

10.2 Alarm

Click **Alarm**, will show the information as below:



The screenshot shows the 'JPEG DEMO_011 Device Settings' window with the 'Alarm' tab selected. The tab is highlighted with a red box. The window contains the following options:

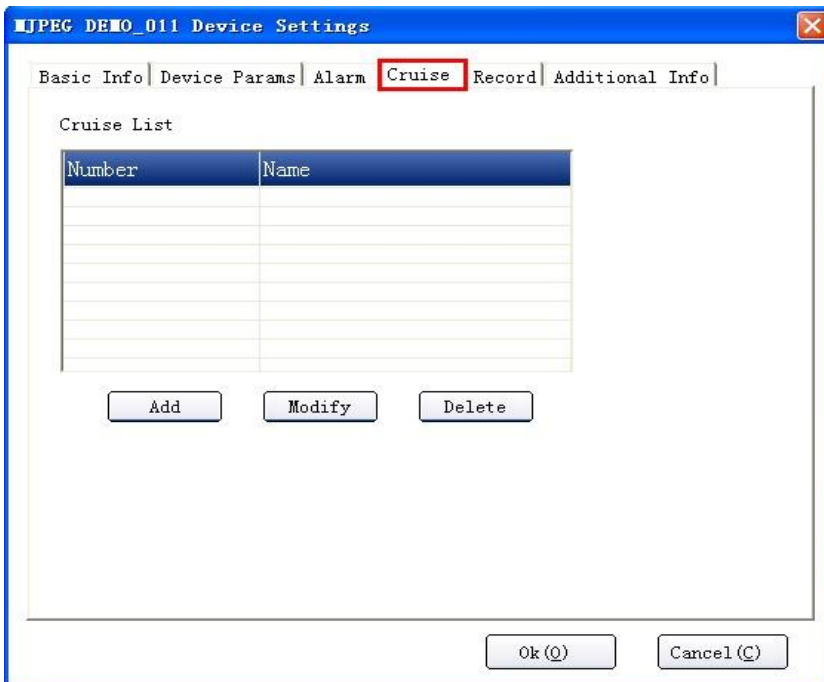
- Motion Alarm: ☐
- Input Alarm: ☐
- Ok (O) and Cancel (C) buttons at the bottom.

Motion Alarm: Enable to active the motion detection alarm function.

Input Alarm: Enable to active the I/O input alarm function.

10.3 Cruise

Click **Cruise**, or click the icon on the rightside panel , will show the information as below:



Basic Info | Device Params | Alarm | **Cruise** | Record | Additional Info

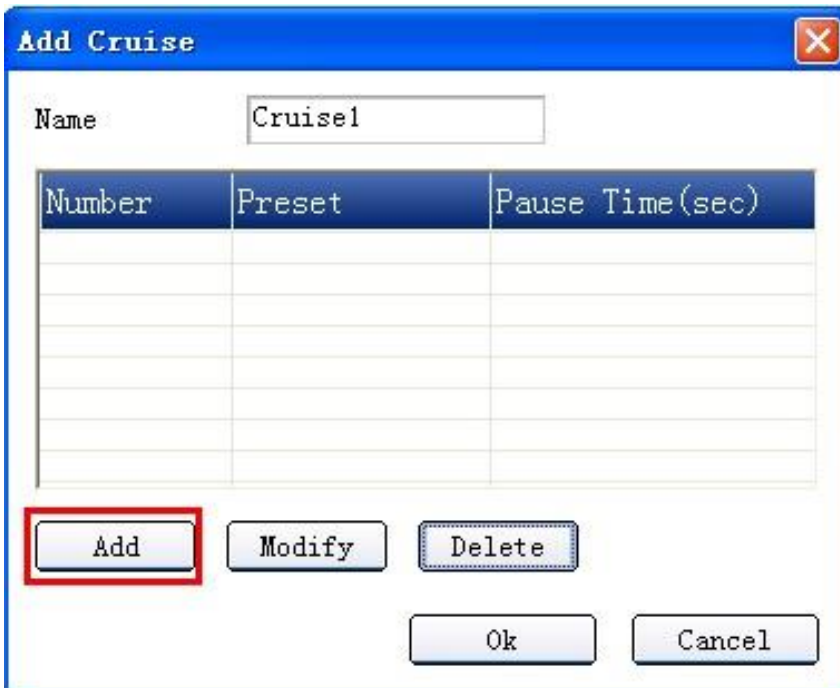
Cruise List

Number	Name

Add Modify Delete

Ok (O) Cancel (C)

Click **Add** will pop-up the add cruise window:



Add Cruise

Name Cruise1

Number	Preset	Pause Time(sec)

Add Modify Delete

Ok Cancel

It supports up to 9 cruise positions.

Click **Add** to set preset as cruise.



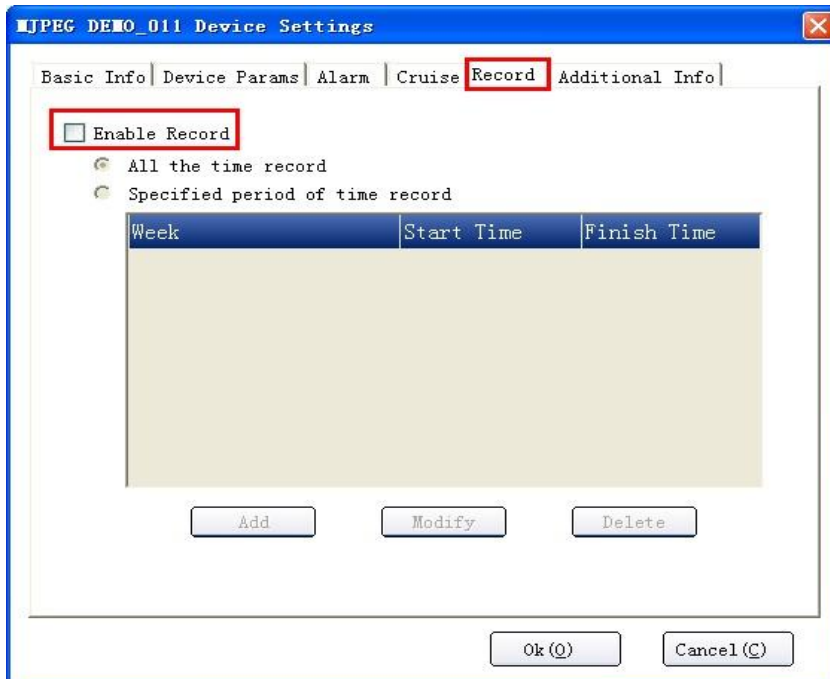
Preset: Choose the preset set successfully already, can be from preset 1-9.

Pause: Set the duration for each preset, can be from 1-60 seconds.

NOTE: Before using cruise function, users have to set preset firstly, this software supports up to 9 preset.
(Details see chapter 4. **Preset Settings**)

10.4 Record

Click **Record**, will show the information as below:

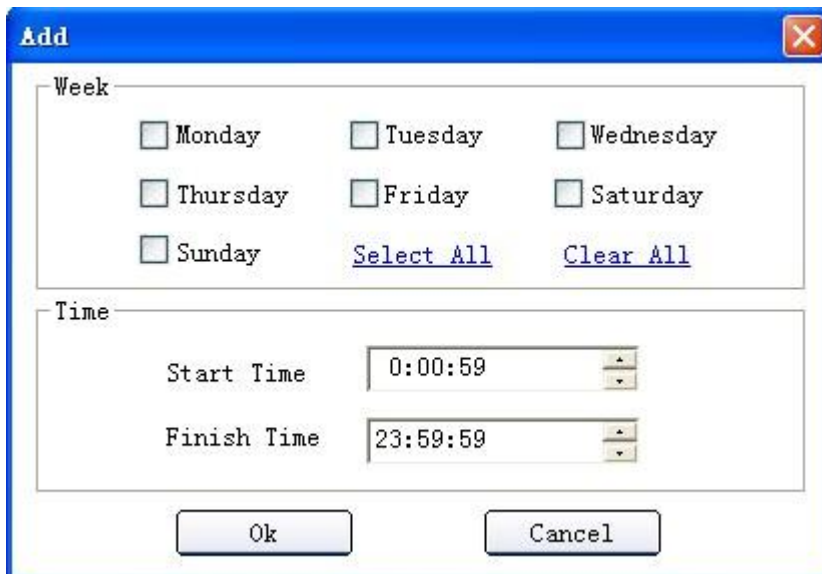


Enable Record: Click it to active the record function.

All the time record: Select it, will active record function all the time.

Specified period of the time record: Select it, active special time record function.

If enable specified period of the time record, click add, will pop-up the window as below:



Week: Set the day for every week.

Time: Set the start time and finish time for activating record.

10.5 Additional Info

Click Additional Info., will show the information as below:

MJPEG DEMO_011 Device Settings

Basic Info | Device Params | Alarm | Cruise | Record | **Additional Info**

Full Name

Phone

Address

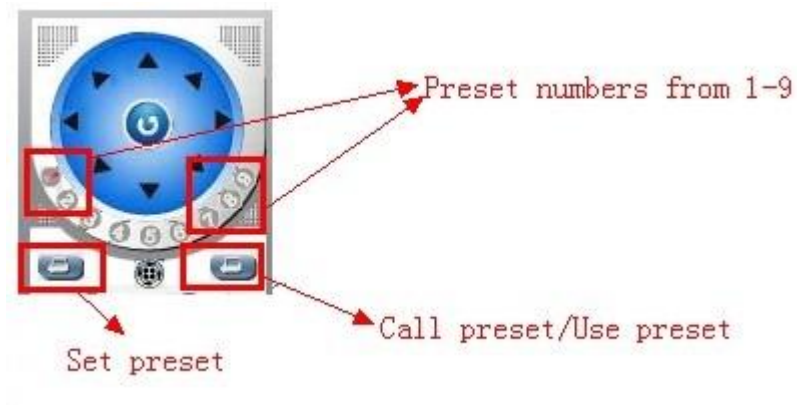
Memo

Ok (O) Cancel (C)

Users can set additional information for this device, such as **Full name**, **Phone**, **Address**, **Memo** etc.

11. PRESET SETTINGS

On the rightside panel, there are some icons for preset, details as the picture showed below:



Number 1-9: Means the preset positions, this software supports upto 9 presets.

Set Preset: Click it to set the preset position

Use Preset: Click it to call the preset position

STEPS:

1. Select the number you want to set, such as 1,
2. Rotate the camera to a special position you want to set as preset,
3. Click Set preset icon to set this position as preset 1.

Do the same steps for other presets, such as preset2, preset3...

4. If you want to check the preset3, select the number 3 firstly, then click use preset icon, then the camera will rotate to the appointed position which you set already.

12.SHORTCUT KEY ON SCREEN

Move the mouse to the window where showed the camera name, then right click, will pop-up the window as below:



Connect: Click it to connect the device set successfully already.

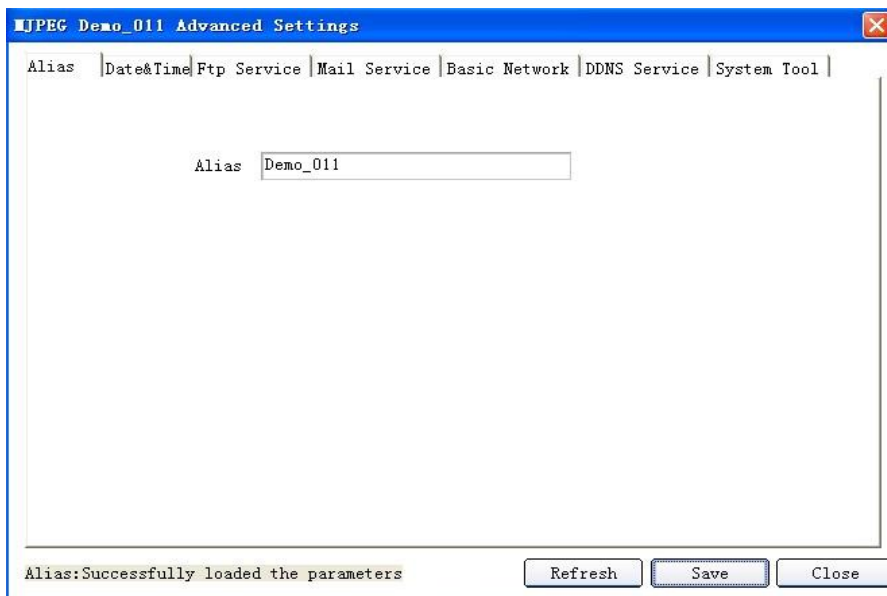
Disconnect: Click it to disconnect the device which showing live video.

Capture: Click it to take snapshot, pictures will be saved to the appointed file.

Stop Alarm: Click it to stop alarm. When there is alarm active, users can click it to stop it.

Device Settings: Click it, will pop-up the Device Settings interface.

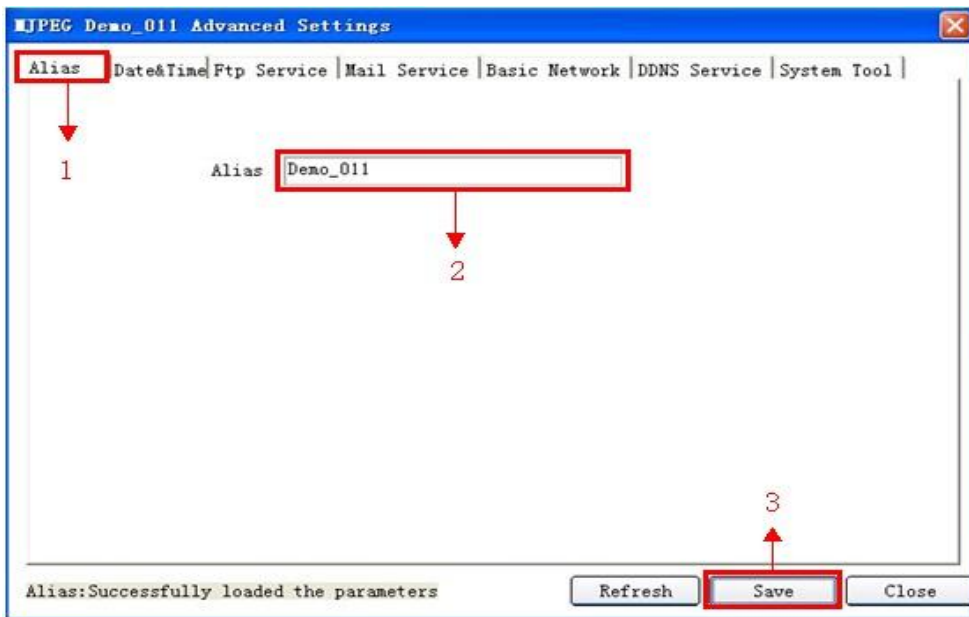
Advanced Settings: Click it, will pop-up the advance settings contexts as below:



12.1 Advanced Settings:

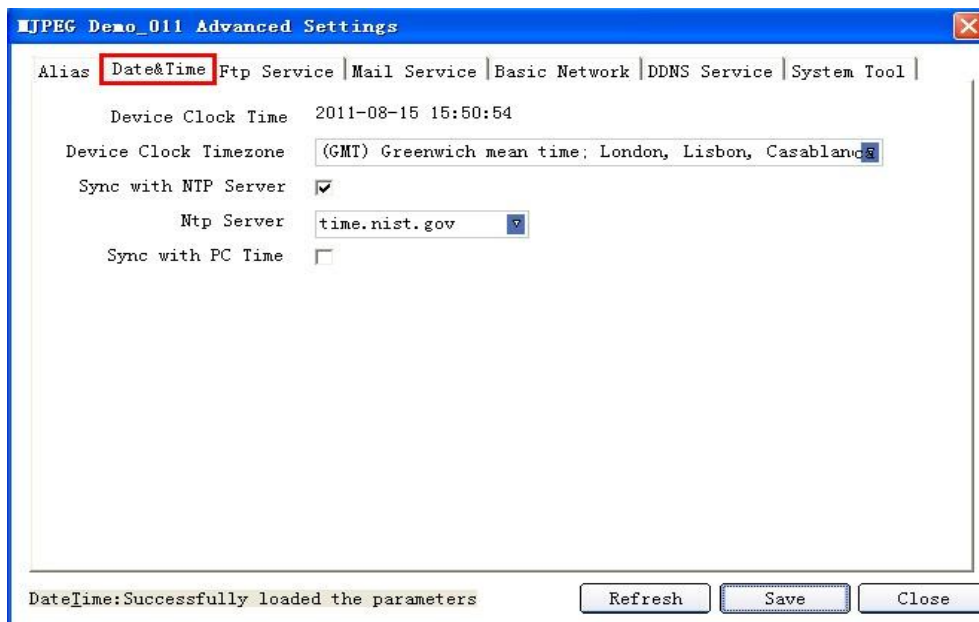
NOTE: For all the advance settings details, please check the usermanul of the device.

Alias: Set the device name freely.



Date&Time: Set the date&time for the device.

1. Set time zone
2. Synchronism with NTP server
3. Synchronism with PC time. (The PC connected to the camera)



FTP Service: Set the FTP functions, you can upload images to your FTP server when motion detection triggered.

JPG Demo_011 Advanced Settings

Alias | Date&Time | **Ftp Service** | Mail Service | Basic Network | DDNS Service | System Tool

FTP Server

FTP Port

FTP User

FTP Password

FTP Upload Folder

FTP Mode

Upload Image Now ☐

Ftp Service: Successfully loaded the parameters

Mail Service: Enable the camera send email alert when motion detection triggered.
Make sure the sender mailbox server provider support SMTP.

JPG Demo_011 Advanced Settings

Alias | Date&Time | Ftp Service | **Mail Service** | Basic Network | DDNS Service | System Tool

Sender

Receiver 1

Receiver 2

Receiver 3

Receiver 4

SMTP Server

SMTP Port

Transport Layer Security Protocol

Need Authentication ☐

Report Internet IP by ☐

Mail Service: Successfully loaded the parameters

Basic Network: Set the basic network parameters for the device, such as **IP address**, **Subnet Mask**, **Gateway**, **DNS Server**, **Http Port** etc.

Alias | Date&Time | Ftp Service | Mail Service | **Basic Network** | DDNS Service | System Tool

Obtain IP from DHCP ☐

IP Addr: 192.168.1.91

Subnet Mask: 255.255.255.0

Gateway: 192.168.1.1

DNS Server: 211.162.78.1

Http Port: 91

Basic Network: Successfully loaded the parameters

Refresh Save Close

DDNS Service: Set the DDNS function, it supports **Manufacturer's DDNS** and the **Third Party DDNS**.

Alias | Date&Time | Ftp Service | Mail Service | Basic Network | **DDNS Service** | System Tool

Manufacturer's DDNS

Manufacturer's Domain: a0581.aipcam.com

Third Party DDNS

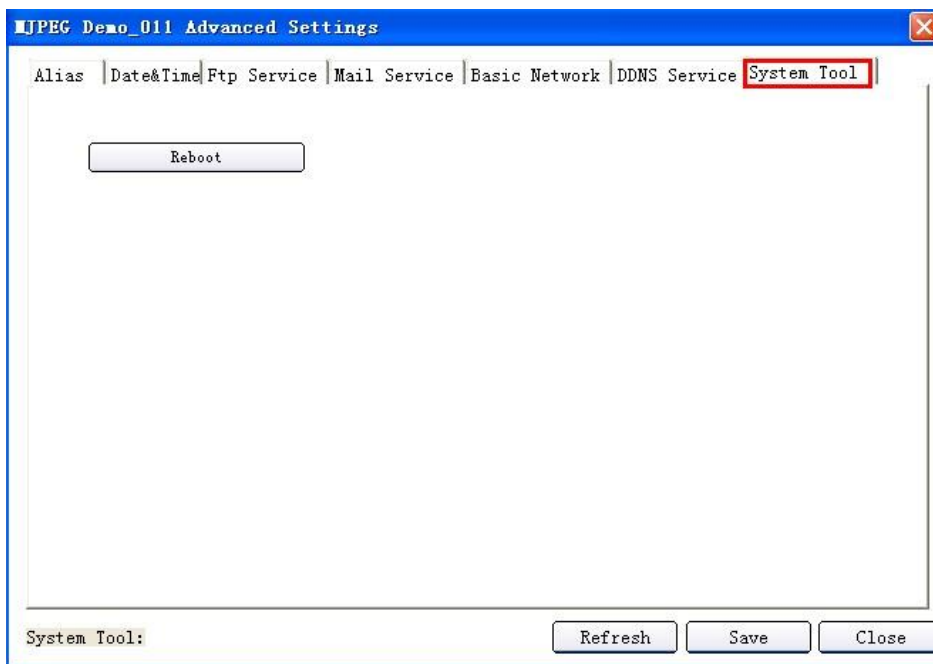
DDNS Service: None

- None
- Oray.net
- DynDns.org (dyndns)
- DynDns.org (statdns)
- DynDns.org (custom)
- 3322 (statdns)
- 3322 (dyndns)

DDNS Service: Successfully loaded the parameters

Refresh Save Close

System Tool: Can reboot the device here.



12.2 Three Icons on screen

Once device connected, there will be three icons on the right bottom, as below:



Capture: Click it to take snapshot.



Alarm Notify: Once there is any alarm, this icon will change to red color.



Record: Once record function activated, this icon will change to red color.

Click the record icon , will pop-up the window as below:



Stop Record: Click it to stop record.

Record has been: Record always.

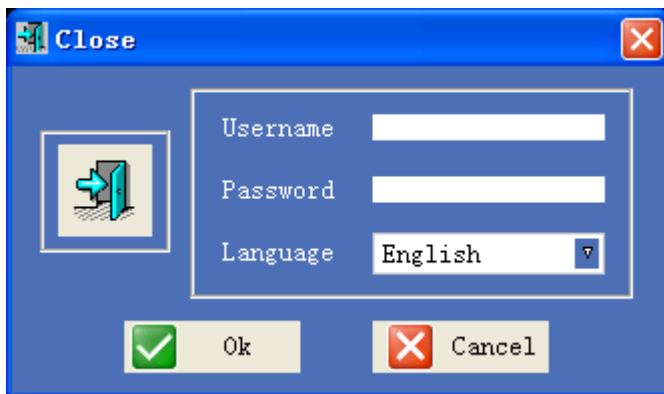
Plan Record: Record according to the plan.

Settings: Click it to do the record settings. It's the same as the record of device settings.

13.LOG OUT



Click  on top menu, will pop-up the window as below:



Enter the username and password, click **OK** to logout.

The factory setting: **username:** admin; **password:** admin;

7.STATEMENT

Thank you for buying our IP Camera, for camera operation, please check the official user manual refer to the appointed model.

This CMS user manual based on version **1.24.0.28**, please download the latest version from our official website, any questions you can not solved by yourself, please kindly contact our technical support department.

Any feedback for our software, please contact us freely.