



# **ALL2205**

## **Megapixel Fixed**

### **Wireless IP Camera**



## ***Quick Installation Guide***

## ALLNET ALL2205 Quick Installation Guide

Please follow the installation steps below to set up ALL2205 IP Camera.

Check the package contents against the list below. **See P.1**

Physical overview. **See P.1**

Install the hardware and connect all cables. **See P.2**

Microsoft OS: Use the software CD to install Intelligent IP Installer. **See P.2**

Access the IP Camera using Intelligent IP Installer. **See P.2**

Mac OS using Safari Browser. **See P.5**

Change light environment setting. **See P.6**

Change the Web Interface into your preferred language. **See P.6**

Use IP Camera via Mobile Phone. **See P.7**

Wireless Setting. **See P.8**

Windows Live Messenger Setting. **See P.9**

Access to Internet via Static IP, Dynamic IP or both. **See P.10**

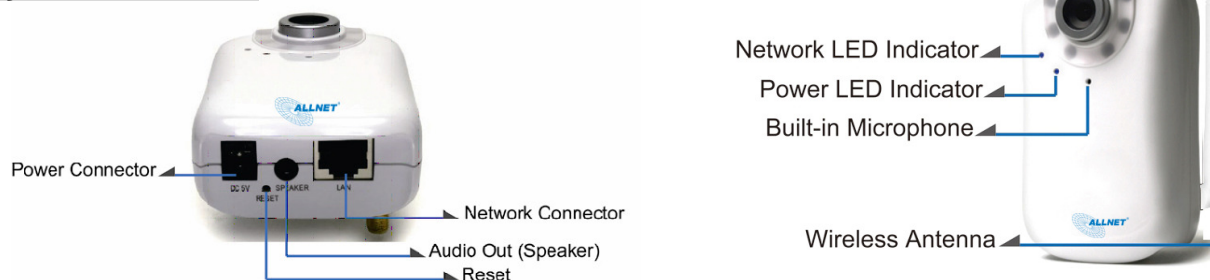
Application of IP Camera. **See P.12**

For more information, please check the User Manual available in the Software CD or you can download the latest software from <http://www.allnet.de>

### Package Contents

<b>Camera</b>	ALL2205 Megapixel Fixed Wireless IP Camera
<b>Quick Installation Guide</b>	Brief product information and quick installation
<b>Software CD</b>	IP Surveillance Software Intelligent IP Installer User Manuals Language Packs
<b>Mounting Bracket</b>	(2) screws, (2) plastic wall anchors, and (1) camera bracket
<b>Antenna</b>	For connection of IEEE 802.11 b / g wireless network
<b>Adaptor</b>	12V DC, 1 A max 12W

### Physical overview



**Focus Adjustment Ring:** Adjust the focus ring to get a clear image.

**Reset:** When the device is powered, press the Reset Button to reboot the device, or hold the Reset Button for 10 seconds to set the settings back to factory default

## Install the hardware and connect all cables

### a. Wall mounting and Ceiling mounting

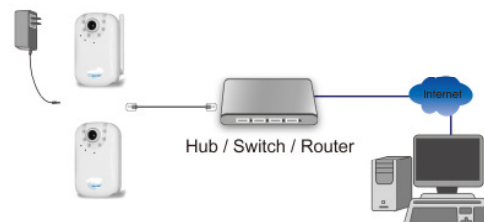
1. Use the 3 supplied screws to fix the base plate to a flat surface.
2. Loosen the lock ring to adjust the desired angle of the camera.
3. Tighten the lock ring.



### b. Connect cables and power supply

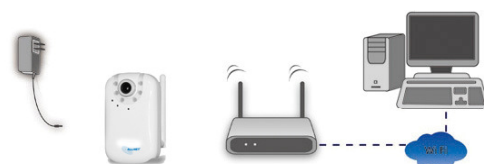
#### b1. Wire Connection

1. Connect the power adaptor to the IP Camera.
2. Use a standard RJ-45 network cable to connect the IP Camera to the Network connection



#### b2. Wireless Connection

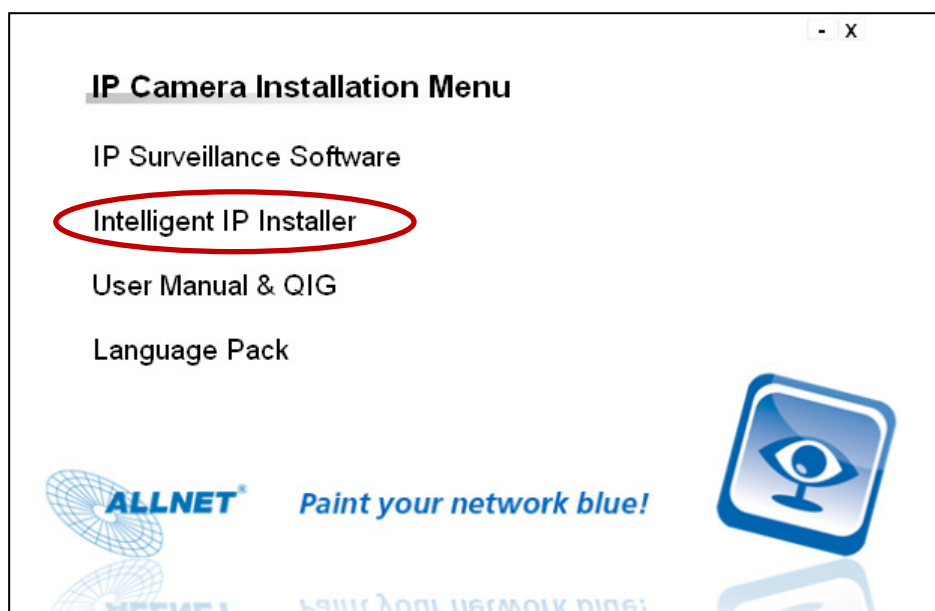
1. Connect power adaptor to the IP Camera.
2. Connect to Wi-Fi.



## Microsoft OS: Use the software CD to install Intelligent IP Installer

Power on your PC and insert the CD-ROM. The setup page will show up automatically. Please follow these steps to install the firmware.

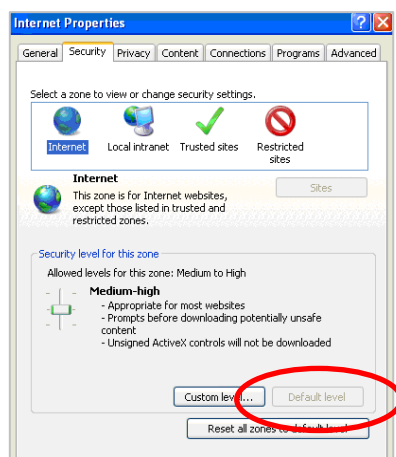
Select **“Intelligent IP Installer”** and follow the installation process to complete the installation.



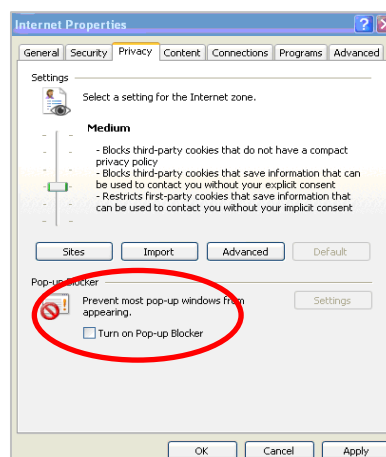
## Access the IP Camera using Intelligent IP Installer

1. Before using Intelligent IP Installer, please check two settings.

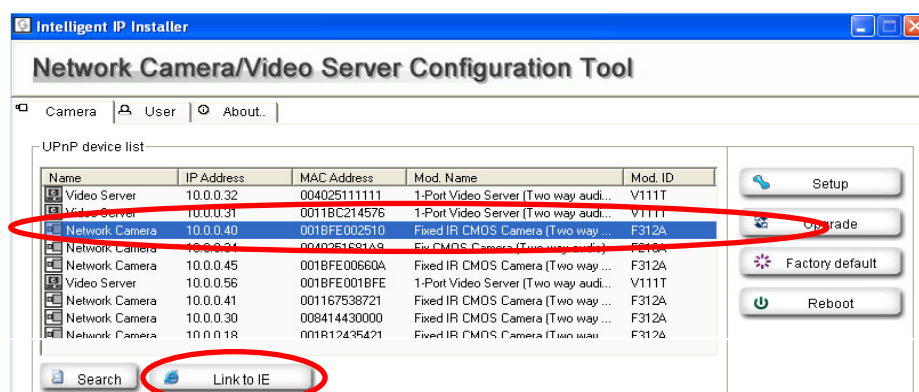
a. Browser's Internet Properties → Security



b. Browser's Internet Properties → Privacy

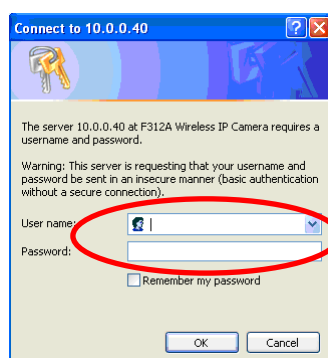


2. Click the Intelligent IP Installer Icon on your desktop. The main page will show up listing all active camera and video server devices. Select the relevant IP camera from the list and click **Link to IE**.



3. Enter your Username and Password to login to the IP Camera.

(Default is admin / admin)



4. When accessing the IP Camera for the first time, a yellow information bar appears below the address bar:  
**This website wants to install the following add-on: 'AxvideoView.cab from 'ALLNET GmbH.**



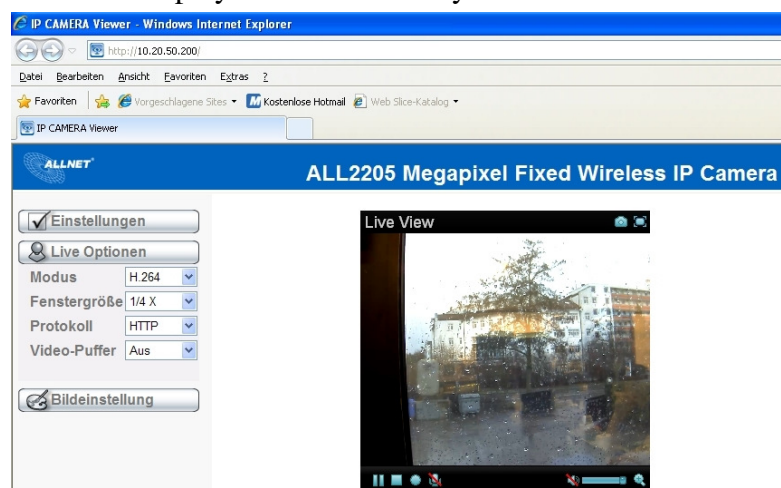
5. Click the information bar, and select **Install ActiveX control**.



6. Click **Install**.

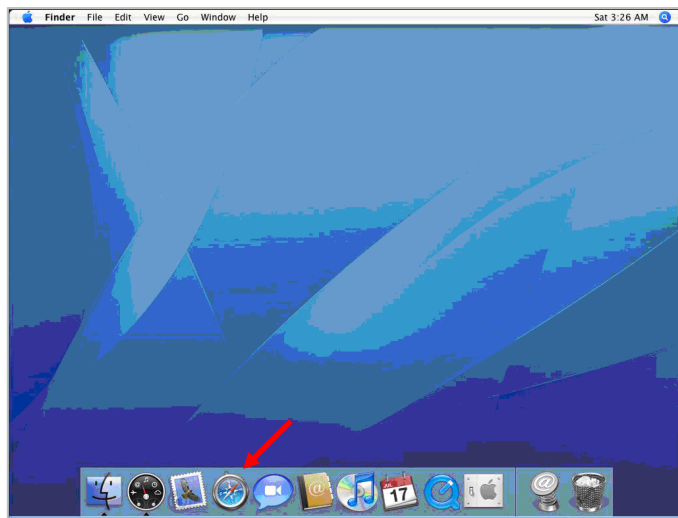


7. Live video displays in the centre of your web browser.

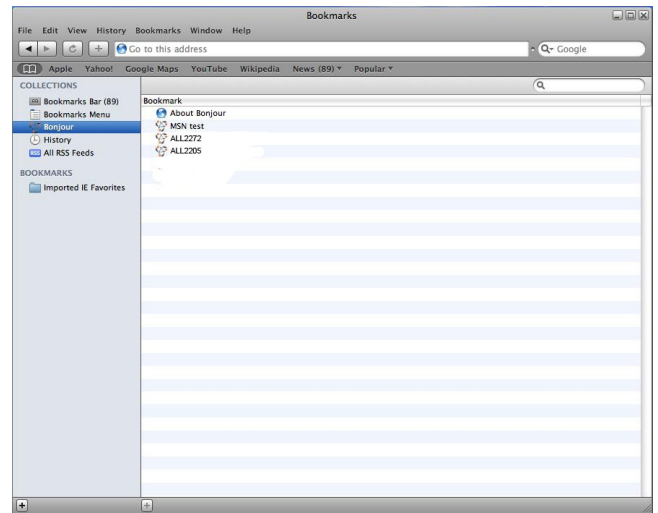


## Mac OS using Safari Browser

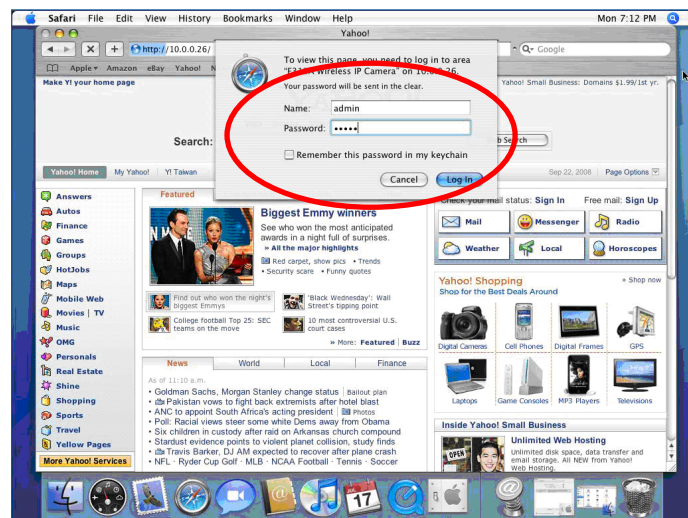
### 1. Select **Safari** icon



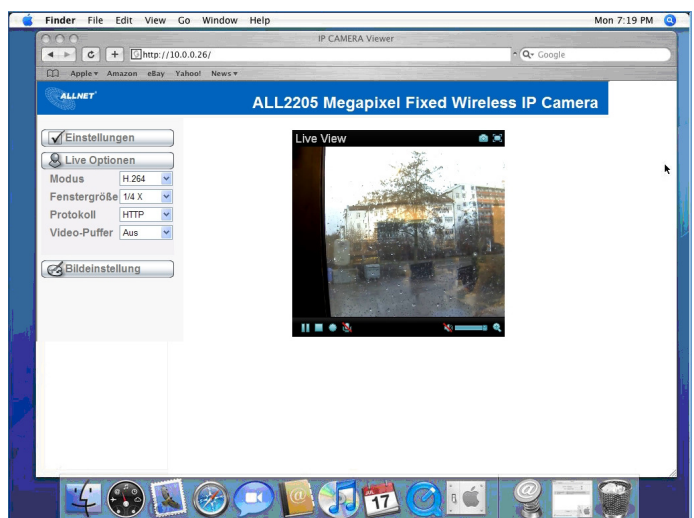
### 2. Click **Bonjour** function and select the camera you wish to access.



### 3. Enter name and password to login to the IP camera. (Default is admin / admin)



### 4. The monitor image will be displayed in your browser.

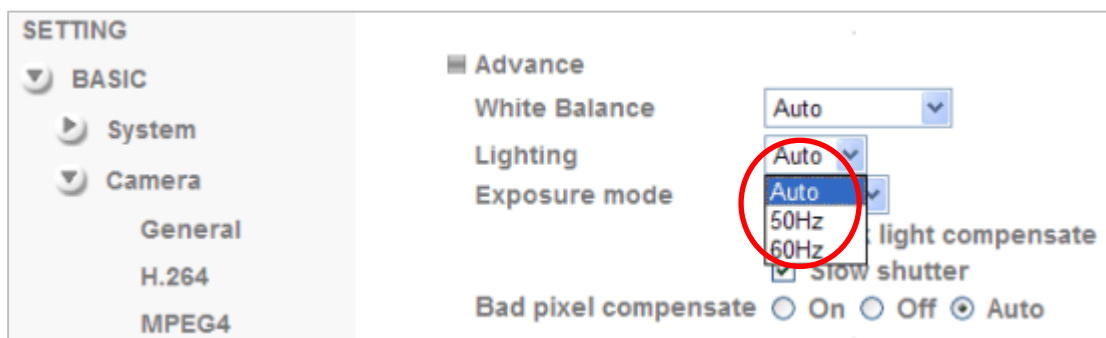




## Lighting environment setting

The default setting of lighting environment is **Auto**. However, you may also select 50 or 60 Hz upon the lighting environment of your country.

Go to “Setting → Basic → Camera → Advanced”, choose the environment setting you wish.

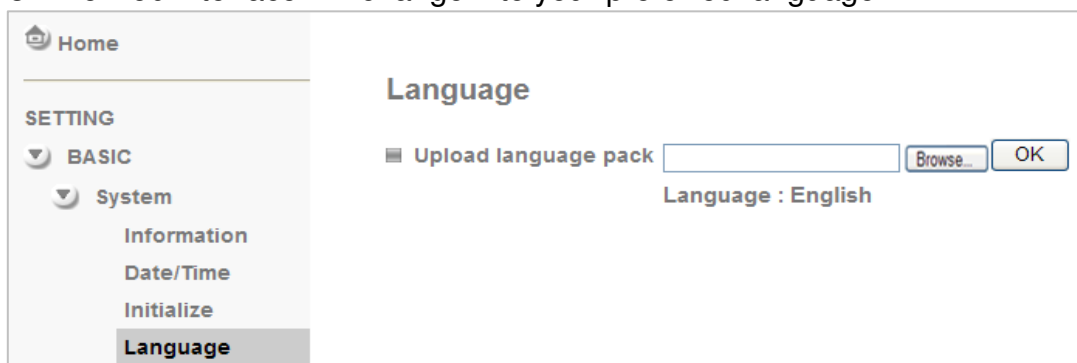


## Change the Web Interface into your preferred language

Use the settings screen to set the language of the Web Interface.

Go to “Setting → Basic → System → Language”.

1. Insert Software CD into your CD-ROM.
2. Browse and select the preferred language from language pack in the Software CD and then click OK.
3. The web interface will change into your preferred language.



## Use IP Camera via Mobile Phone

### 1. Using IP Camera via iPhone

Select Safari function → Enter IP address in the web link → enter username and password (**default value admin/admin**) → The Zavio user interface and Live Image will show up in the middle of the screen.

### **2. Mobile phone viewing**

#### a. 3G Mobile Phone Streaming Viewing

For 3G mobile phone viewing, please type “ **rtsp://<IP>:<PORT>/video.3gp** ” into your 3G web media player.

<IP> is the IP address of your IP camera;

<PORT> is the RTSP port of your IP camera (Default value is 554.)

**Example: rtsp://10.10.10.1:554/video.3gp**

#### b. 2.5G Mobile Phone Viewing

##### b1. WAP viewing

For 2.5G WAP mobile phone viewing, type “ **http://<IP>/mobile.wml** ” into your 2.5G web browser.

##### b1. Browser viewing

For 2.5G mobile phone browser viewing, type “**http:// <IP>/mobile.htm** ” into your 2.5G web browser.



## Wireless Setting

Power the IP Camera and connect an Ethernet network cable to the IP Camera's LAN port. Using Intelligent IP Installer and entering the camera's setting page.

Please go to "Setting → Basic → System → Network → Wireless", set the wireless option to "On"

1. Click Refresh and choose the Access Point you wish to connect.
2. Enter the password within the **Active transmit key** field if required.
3. Choose DHCP to connect through a dynamic IP or assign a static IP for the wireless connection.
4. Click "OK" to apply settings. The **Wireless IP address** appears in the **IP address** field.

**Note:** The wireless private IP address can be found in Intelligent IP Installer.

The screenshot shows the web interface of the ALL2205 Megapixel Fixed Wireless IP Camera. The left sidebar contains a menu with options: Home, SETTING, BASIC, System, Camera, Network, Information, PPPoE, DDNS, UPnP, Bonjour, IP Notification, **Wireless**, Messenger, Security, and Advanced. The main content area is titled "Wireless" and shows a toggle switch for "Wireless" set to "On". Below this is a table titled "Status of wireless networks" with columns: ESSID, Mode, Security, Channel, Signal strength, and Bit rate. The table lists several networks, with "ALL02762" selected. Below the table are fields for MAC address (00:1B:FE:00:EC:F1), IP address, ESSID (ALL02762), Mode (Managed), Authentication (WPA2-PSK), Encryption (TKIP), and a Passphrase field. At the bottom, there are radio buttons for "Obtain an IP address automatically (DHCP)" (selected) and "Use the following IP address".

ESSID	Mode	Security	Channel	Signal strength	Bit rate
bridgewb	AdHoc	WPAONE/TKIP	3	57	0
FRITZ!Box F...	Managed	WPA(2)-PSK/TKIP, AES	1	59	0
ALL0299BR	AdHoc	WPAONE/AES	13	93	0
ALL02762	Managed	WPA(2)-PSK/TKIP, AES	6	100	0
9708YGH000839	Managed	Open/NoSecurity	11	61	0

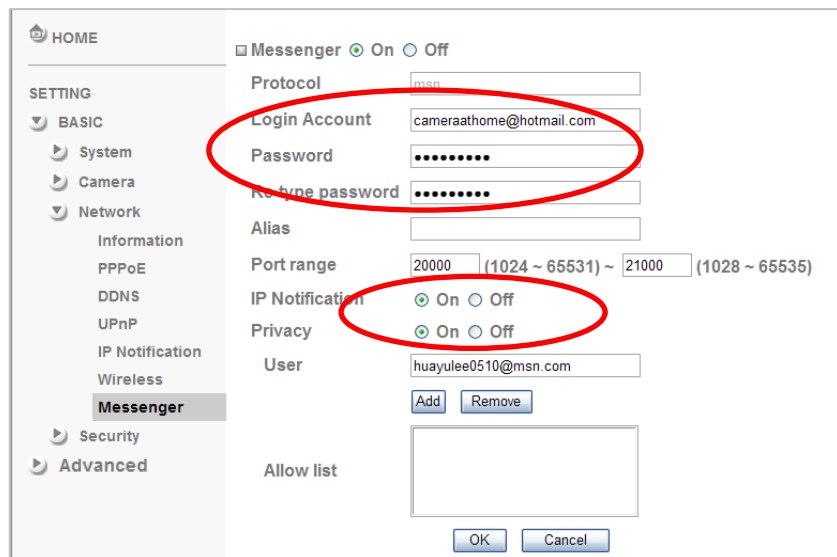
## Windows Live Messenger Setting

Live video of the IP Camera can be displayed using Microsoft Live Messenger, whilst providing its public IP address to users for access via the web browser. This feature is useful especially when the IP address of the camera is dynamically assigned.

If you wish to set up MSN Messenger, enter the camera's setting page.

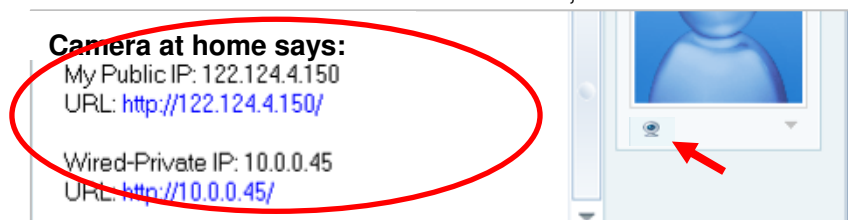
Go to "Setting → Basic → System → Network → Messenger", set the Messenger option "On."

1. Create a new MSN Messenger account (**e.g.: Camera at home**) for the IP Camera.
2. Enter the new MSN Messenger **Login Account** and **Password** within the designated boxes.
3. Under the **IP Notification Option**, Click "On" to enable IP notification to the users.
4. Under the **Privacy Option**, Click "On" to create an allow list.
5. Use your existing account to login to MSN Messenger.
6. Add the new MSN Messenger account (**e.g.: Camera at home**) to your contact list.

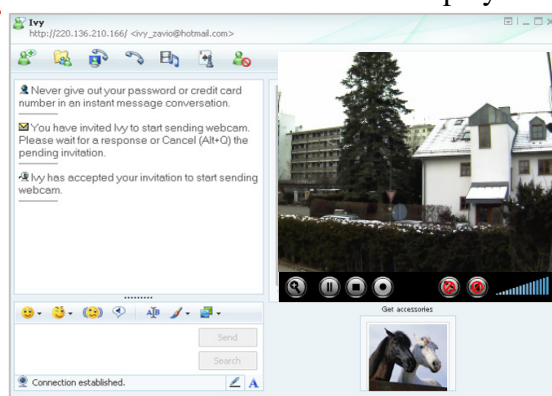


7. The IP Camera will send you a message with its Public IP and Private IP if the IP Notification Option is enabled.

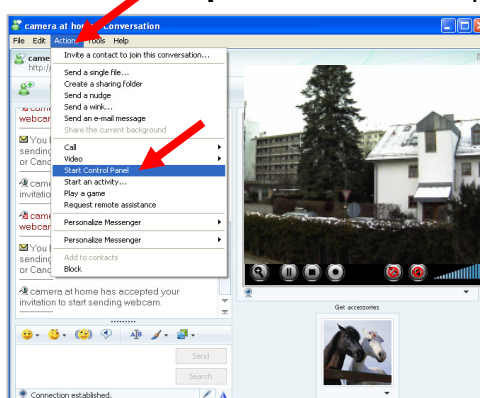
8. Click on the small camera icon. Then, choose "View a new contact's webcam".



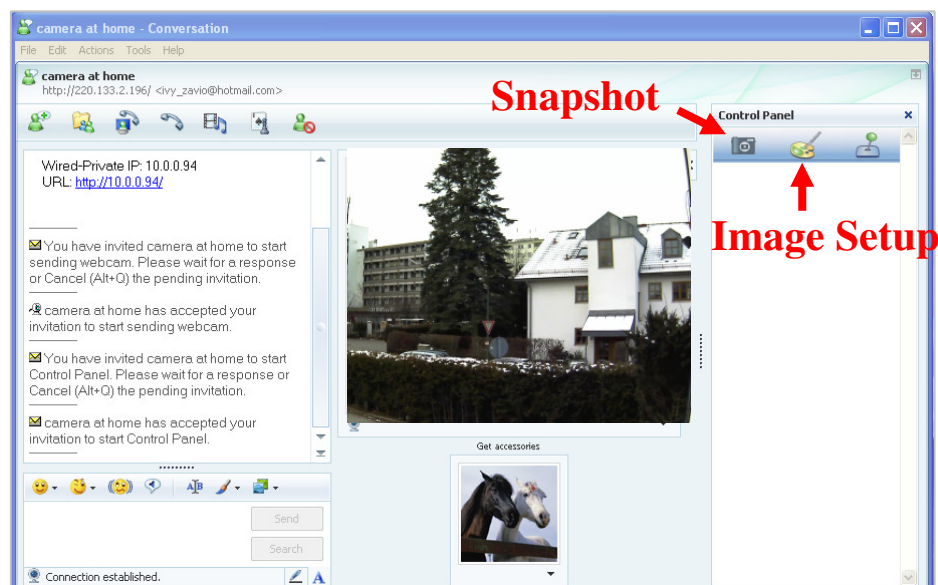
9. The IP Camera automatically accepts your invitation and its live video is displayed.



10. Click **Action** button and choose **Start control panel** to use control panel



11. You can use **Snapshot**, **Image Setup** function via MSN add-in control panel.



## Access to the Internet

a. Internet connectivity of the IP camera can be established by inputting the cameras IP information within the **Information** section.

(Please go to **Setting** → **Basic** → **Network** → **Information**)

**Home**

**SETTING**

- BASIC**
  - System
  - Camera
  - Network
    - Information**
    - PPPoE
    - DDNS
    - UPnP
    - Bonjour
    - IP Notification
    - Wireless
    - Messenger
  - Security
  - Advanced

**Information**

MAC address: 00:1B:FE:00:CC:FA

☐ Obtain an IP address automatically (DHCP)

☒ Use the following IP address

IP address: 10 . 0 . 0 . 40

Subnet mask: 255 . 255 . 255 . 0

Default gateway: 10 . 0 . 0 . 1

☒ Use the following DNS server address

Primary DNS server: 168 . 95 . 192 . 1

Secondary DNS server: 168 . 95 . 1 . 1

HTTP port number: ☒ 80 ☐ (1024 to 65535)

OK Cancel

b. Internet Connectivity of the IP Camera can be established through PPPoE (Point-to-Point Protocol over the Ethernet) by inputting the username and password from your Internet Service Provider (ISP) within the **PPPoE** section.

(Please go to **Setting** → **Basic** → **Network** → **PPPoE**)

**Note 1:** Please reboot the IP Camera, after changing the PPPoE settings.

**Note 2:** Please turn on the DDNS and IP Notification function when using the PPPoE function.

The screenshot displays the web interface of the ALL2205 Megapixel Fixed Wireless IP Camera. The top header is blue with the ALLNET logo and the device name. A left sidebar contains navigation links: Home, SETTING, BASIC (expanded), System, Camera, Network (expanded), Information, **PPPoE** (selected), DDNS, UPnP, Bonjour, IP Notification, Wireless, Messenger, Security, and Advanced. The main content area is titled 'PPPoE' and features a checkbox for 'PPPoE' which is checked, followed by 'On' and 'Off' radio buttons. Below this are input fields for 'IP address' (showing 0.0.0.0), 'User ID' (filled with all2205@allnet.de), 'Password' (masked with dots), and 'Re-type password' (also masked). There are two radio buttons for DNS configuration: 'Obtain DNS server address automatically' (selected) and 'Use the following DNS server address'. At the bottom right of the form are 'OK' and 'Cancel' buttons.

c. Internet Connectivity of the IP Camera can be established if your router is UPnP (Universal Plug and Play) enabled. The IP camera is automatically detected and added to “My Network Places” on your computer.

*Please note that only Home Routers manufactured after 2006 support the UPnP function.*

c1. If your router is a UPnP Internet Gateway Device (IGD), turn on the **UPnP function** within the UPnP section. (Please go **Setting** → **Basic** → **Network** → **UPnP**)

**Note: If you turn on the UPnP Port Forwarding function, RTSP (Real Time Streaming Protocol) Port information will change to the illustrated value below.**

HOME

SETTING

BASIC

System

Camera

Network

Information

PPPoE

DDNS

**UPnP**

IP Notification

Wireless

Messenger

Security

Advance

UPnP ☒ On ☐ Off

☒ Turn On UPnP port forwarding

HTTP port ☒ 80 ☐  (1024 ~ 65535)

SSL Port ☒ 443 ☐  (1024 ~ 65535)

MPEG4 viewer port  8090 (1024 ~ 65535)

MPEG4 viewer port(SSL)  8091 (1024 ~ 65535)

MJPEG viewer port  8070 (1024 ~ 65535)

MJPEG viewer port(SSL)  8071 (1024 ~ 65535)

MPEG4 RTSP port

Computer view  8050 (1024 ~ 65535)

Mobile view  8030 (1024 ~ 65535)

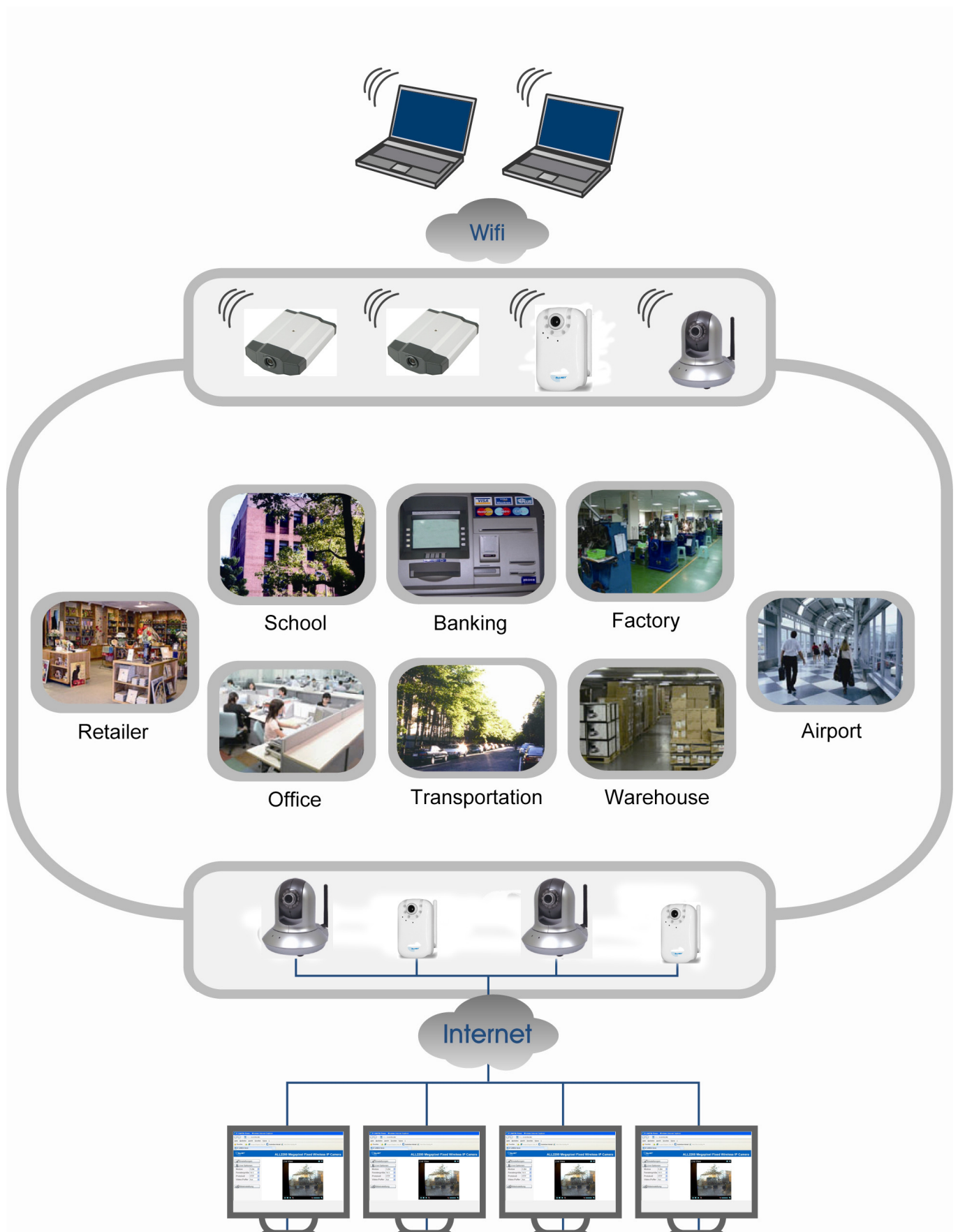
OK Cancel

c2. If your router is not an UPnP Internet Gateway Device, please setup Port Forwarding or Port Mapping

**Note 1: Home Routers manufactured before 2006 do not support UPnP IGD function.**

**Note 2: Enterprise Routers do not support UPnP IGD function.**

## Application of IP Camera



Copyright © 2009. All rights reserved.

No part of this document may be reproduced, republished, or retransmitted in any form or by any means whatsoever, whether electronically or mechanically, including, but not limited to, by way of photocopying, recording, information recording, or through retrieval systems without the express written permission of the owner. Product specifications contained in this document are subject to change without notice. All other company or product names mentioned are used for identification purposes only and may be trademarks of their respective owners.

Manufacturer:  
ALLNET GmbH



ALLNET Deutschland GmbH  
Maistrasse 2  
82110 Germering  
Tel. +49 89 894 222 22  
Fax +49 89 894 222 33  
E-Mail: [info@allnet.de](mailto:info@allnet.de)