



ALLNET ALL3692

Powermeter PM3

- Power Source and Consumption monitoring
- accessible via LAN/WLAN
- Analyse Power Consumption and feed
- Sensors capture measured values over
- controlling and switching
- save electricity!

Measure, control and regulate automatically and independently

ALLNET for years been pursuing the concept of intelligent control of processes in buildings over network and Internet. Intelligent building technologies not only offer comfort, but actively promotes the reduction of energy costs.

Centrally managed and network / internet accessible ALLNET Home Automation products allow the intelligent building technology regardless of time and location.

The Allnet ALL3692 is the consistent further development of the successful ALL369x Power Meter series, this time for D0 power meter with optical output. This concrete and calibrated readings are always recognized.

Art.-Nr.101241



ALLNET ALL3692 computer control and measurement

- Instrument for monitoring and control of your current power consumption at several measuring points
- Via the Internet from anywhere accessible (Internet connection at the location of ALL3692 required)
- Easy operation and installation through Web interface and the D0 OKK optical read head ALL3688, alternatively ALL3689 (no interference with the house wiring necessary)
- integrated web server
- Email alerting at a set value is exceeded
- 4 x D0 ports allows you to connect with each D0 power meter with optical output (ALL3688/ALL3689)
- Extensive consumption display with live chart, chart function, table display, etc.
- Possibility to download the readings in database format, eg as a CSV file
- Interfaces: 1 x network, 1x 300Mbit Wireless, D0 4x, 2x I2C sensor / port, 2x External USB ports

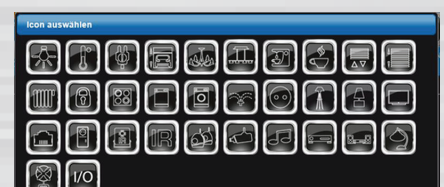
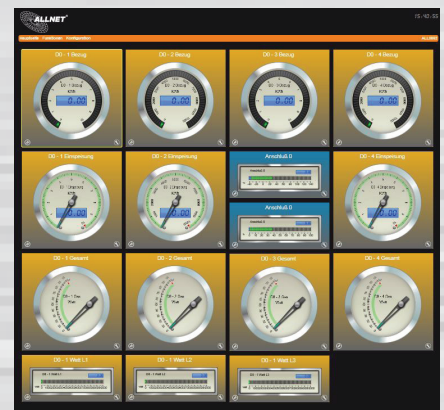
Easy installation by placing the OKK optical read head D0 by its magnetic ring on any modern electricity meter. A calibration of the ALL3692 omitted by the D0 signals of calibrated electricity meter. There is no interference in the House 230V wiring needed.



Features und web interface:

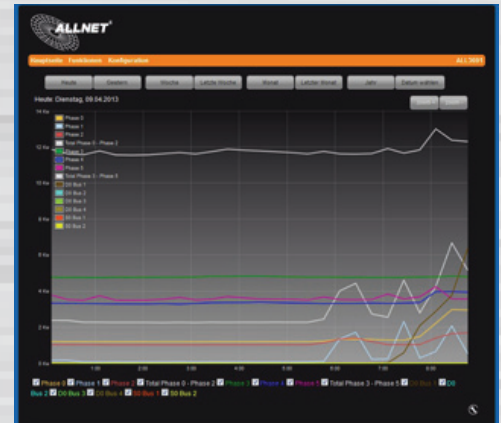
The „Speedometer„ Display of our power meter allows you to check live, what you up to date on current consumption each phase and also shows you the recognized current cost of consumption.

The additional sensor ports, you can optionally measured values such as Temperature, air pressure, brightness and to define optionally actuators.





The power meter allows you to graphically represent your consumption. You can represent a daily, weekly, monthly or yearly graphs and single-phase or hide.



The configuration page of the Power Meter gives you the opportunity to set individual values within the device. This includes the cost of power consumption, labels and graph colors.

If you want to reuse or export for archiving the determined values of the power meter, you can export it easily via the web menu as CSV or SQL Lite file.

The live charts of the device you graphically represents the current power consumption of the device. Here you have the possibility to compare directly single-phase power lines.





Item	Specification
Interfaces:	4x D0 for D0-compatible power meter with optical output 2x RJ 45 Ports for sensor and/or actuator 2x USB for external use 1x RS232 System console port
Internal Memory:	4GB USB Flash memory stick
Network Interface:	1x RJ45 10/100Mbps 1x 2,4 GHz Wireless N, up to 300 Mbps
network protocols:	HTTP/HTTPS, TCP/IP, SNTP, SMTP, SSH
operating Systems:	all network-capable operating system with a browser
Power input:	100~240 V AC, 50/60 Hz, external Power Supply
power consumption:	< 3 Watt (without additional moduls, sensors and actuators)
Case:	Aluminum case with mounting bracket for wall mounting
Environment:	Temperature operarting: 5 ~ 40 °C Humidity operating: 10% ~ 85% (non-condensing) Temperature storage: -20 ~ 60 °C Humidity storage: 5% ~ 95% (non-condensing)
Certificates:	CE, RoHS
Dimension:	155 x 28 x 26 mm (Lenght x Width x Height)
Weight:	260 Gramm (only device)
Warranty:	36 months
Package content:	1x ALL3692 1x ALL3688 OKK optical D0 readhead 1x Readhead-connection cable 2x WLAN Antennas 1x Ethernetcable 1x Power Netzteil 230VAC - 12V DC 2A 2x universal brackets 1x manual