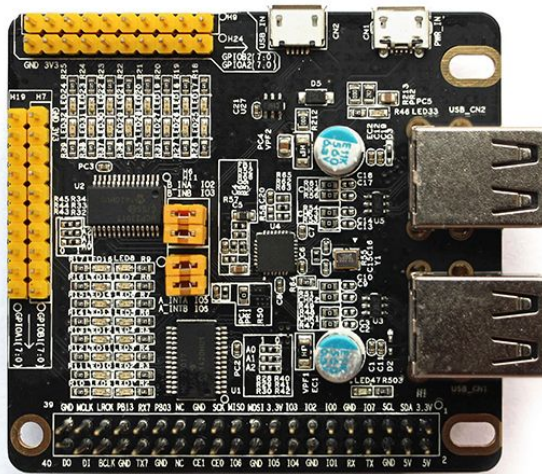


banana pro board zbh. LN Hub-32 IO



EAN CODE



Products Description:

LN Hub-32IO is an extension board with extra 32 GPIO ports and 4 USB ports. It is designed to plug on to the top of the 40 pin GPIO headers of the Banana Pro, allowing you to control more digital output and input devices and connect more USB devices. It can be powered by external power supplier when you connect many power consumption USB devices so that the Banana Pro can be protected.

Features:

- 32 GPIO headers
- 32 GPIO LED indicators
- 1 micro USB client port connect to Banana Pro
- 4 extra USB host ports for external USB devices
- 1 micro USB power port to connect external power source
- Easy to program in Python, Scratch and C
- Plugs directly onto the Banana Pro GPIO socket

Applications Example

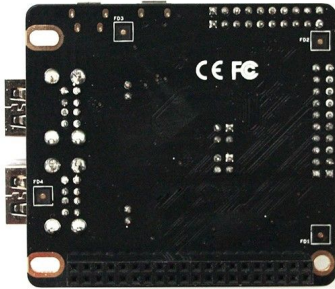
- Experiments with Banana Pro
- Connect more USB devices



Art.-Nr.: 121982
Herst.-Nr.: LN HUB-32IO

Detectors and alarms

Digital outputs/inputs control



Zubehör

Art.-Nr.	Name
115346	Banana Pro Board
21483	ALLNET Antenne 2,4 GHz 5dBi Omni indoor R-SMA
102080	ALLNET Antennen-Pigtail U.FL auf R-SMA (f) 30cm
111809	ALLNET S-ATA SATA HDD Kabel zbh. Mini PC, Mele, Banana etc.
115498	Banana Pro zbh. Acrylgehäuse
121958	Banana Pro Board Zbh. LN IO Erweiterungsplatine
121981	Banana Pro Board Zbh. LN Digital Erweiterungsplatine