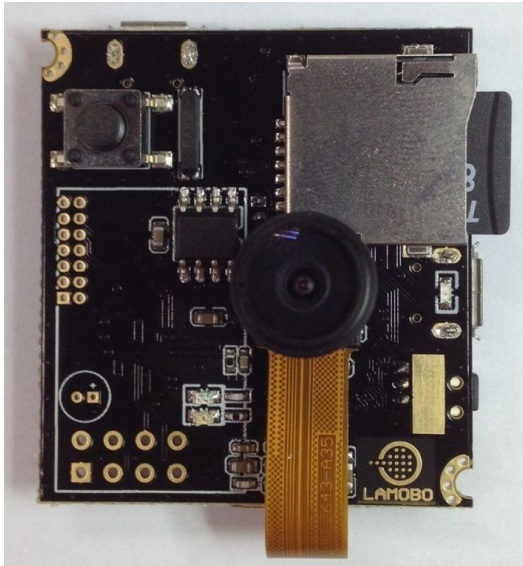


banana pi board BPI-D1



EAN CODE



What is Banana Pi BPI-D1

The BPI-D1 is the smallest open-source development board around, with a built-in HD mini camera. At 36mm (w) x36mm (l) and weighing in at 10g, it's much smaller and lighter than any mini-cam or camera board out there. It allows you to create and customize your own mini-cam and can be a valuable part of any cool hardware you are working on. The D1 prides itself on providing high-resolution image quality: Both video and photos are captured at 1280x720p with a video capture rate of 30 fps.

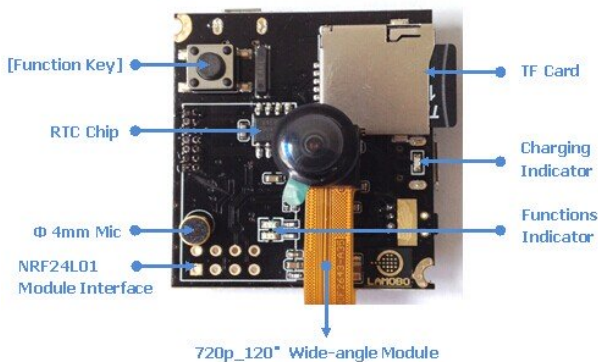
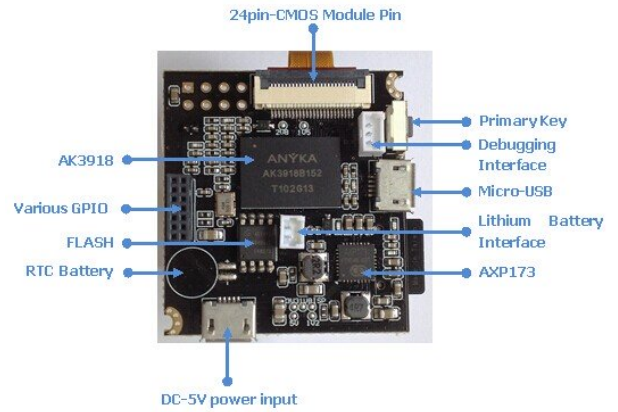
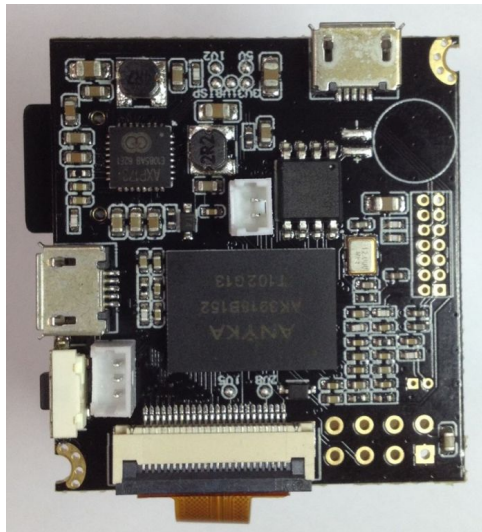
The BPI-D1 is designed specifically to give you all the multimedia tools you need in one small package. Simply connect to an external battery source (with your desired power capacity), and the D1 does the rest: there is a HD mini-cam, audio sensor, microphone, CPU, GPIO, WiFi, and more - you name it, the D1 has it.

Hardware specification	
Product size	PCB 36x36mm M7*P0.35 EFL=3.0mm/F.NO=2.8/View Angle=60°
CPU	400MHz ARM926EJ 32Bits RISC Core
RAM	64MB DDR2
Flash	16MB SPI-FLASH
Storage	SD Card Seat ,supportable for 8G,16G, 32G TF cards
CMOS	CMOS Image Sensor SoC30FPS@720P, Visible light with 940 nm two-way infrared lens filter, with infrared night vision function
Lens	M7*P0.35 EFL=3.0mm/F.NO=2.8/View Angle=60°
Video	It achieves H.264 hardware encoding at 1280x720p_30fps. 32 gb TF card can store 120 hours of video data
Audio	MP3/WMA/AAC
WIFI	optional über NRF24L01 4duino Wifi Art.: 111894 oder



Art.-Nr.: 114484
Herst.-Nr.: Bpi-D1

	USB Stick Art.: 111798 und Adapter
RTC	RTC circuit and supporting OSD
PM	Support Li-ion Charging with Built-in AXP173 power management chip
Mic	Embedded electret microphone
Power Consumption	Recording: 5V-200mA, WiFi On: 5V-350mA, continuously record 720P video or audio data for 24hour when a mobile power of 10000mAH is available.
GPIO	1UART/2GPIO, ?2PWM/2GPIO, ?I2C, ?AudioLineIN, ?HPAudioOutL, ?HPAudioOutR, ?1 SPI Interface
UART	Independent UART debugging interface
USB	USB programmatic interface / OTG device (WiFi module/USB drive)
DC IN	Micro-USB single +5V power input
Battery	3.7V Li-ion socket
OS	Running on Linux3.4.35, Kernel Operation system that makes secondary development possible



Zubehör

Art.-Nr.	Name
111809	ALLNET S-ATA SATA HDD Kabel zbH. Mini PC, Mele, Banana etc.
113894	Flepo Netzteil USB 2-fach 100V/240V-2A
85227	\Patchkabel USB2.0, 2m, A(St)/MicroB(St), schwarz, Synergy 21,
121803	//Flash SecureDigitalCard 8GB *SanDisk* SDHC - UHS-I
123801	/Flash SecureDigitalCard 16GB *Samsung* microSDHC - UHS-I
112980	\Flash SecureDigitalCard 16GB *SanDisk* microSDHC - UHS-I - Extreme Pro
113491	Banana zbH. IO extend Board



Art.-Nr.: 114484
Herst.-Nr.: Bpi-D1

Art.-Nr.	Name
113492	Banana zbh. PrototyPing extend Board
111798	ALLNET Wireless N 150Mbit USB-MINI-PEN Adapter ALL-WA0150N
101039	ALLNET BLUETOOTH 4.0 USB Adapter ALL1580
113079	Banana zbh. Banana/Arduino® I/O Breakoutplatine 2in1
113485	Banana zbh. I2C GPIO extend Board
113488	Banana zbh. GPIO extend Board
113494	Banana zbh. berryclip 6LED add-on DIY Board
113495	Banana zbh. UNO Board
114371	Banana Pi zbh. Camera Module CSI OV5640 Chipset
114432	\banana pi SD-CARD Adapter