



ALLNET PRODUCTS 2K15

CONTENTS

	IP CAMERAS	PAGE 3
	VDSL	PAGE 7
	WIFI	PAGE 10
	POWERLINE	PAGE 17
	BUILDING AUTOMATION	PAGE 23
	NAS SYSTEMS	PAGE 29
	POWER OVER ETHERNET	PAGE 33
	FAST & GIGABIT ETHERNET & SERVER NETWORKING CARDS	PAGE 41
	MODEMS & ROUTERS	PAGE 45
	MEDIA CONVERTERS	PAGE 49



ALLNET – THE NETWORK PEOPLE

Networks are becoming more and more important, whether for private households or businesses. The networks will be used for more than just transmitting data and will be integrated much deeper in our everyday life to offer more comfort and efficiency.

Our product range shows different ways to master the challenges of the digital life and offer your customers new, innovative and sustainable products and solutions. You can use ALLNET products to install network infrastructures or to update and enhance existing infrastructures with useful functions. IP based solutions like video surveillance, building automation or wireless networks offer not only more comfort, but also an increase in security and energy efficiency.

The possibility of combining different devices via IP offers new synergies to improve the power of the network and offers new functionalities for the users. This allows transmitting data, voice, video and even the power needed to supply PoE compatible devices via a standard network cables. In addition to that you can control devices via LAN and e.g. switch light on and off or control the energy consumption. All functions use the network cable as common basis, which turns the network infrastructure into a powerful framework that can be accessed by all compatible devices. This reduces the total cost and expense for installation, administration and maintenance.

Additionally, ALLNET offers passive network components to protect and enhance the centerpiece of your network. Our portfolio contains everything needed for a reliable networks infrastructure. Starting from complex internet access solutions to patch cables and 19" switches with up to 48 ports or VPN solution for remote access – ALLNET provides everything you need for a scalable and reliable network infrastructure.

In addition to standard products we also offer special solutions, like VDSL2 via 2wire-line, Powerline data transmission via powerline or innovative tools to measure the power consumption.

Our product assortment offers thousand possibilities to update your infrastructure to state of the art solutions. If you miss a specific solution, just take a look at our distribution portfolio – you can find everything from Axis to ZyXEL.

The ALLNET sales team is looking forward to your requests and is more than willing to offer advices around the theme of ALLNET.

Please do not hesitate to contact us: Tel.: 089 894 222 22 or sales@allnet.de.

Gerhard Zerwes
PRODUCTMANAGER ALLNET BRAND

CONSUMER SECTOR

ALL2212 WIRELESS MEGAPIXEL IP CAMERA

- Network camera WLAN / LAN
- 1 megapixel
- Integrated IR LEDs
- Supports P2P function with direct access via App (iOS & android)
- Wireless LAN interface as per IEEE802.11 b/g/n
- 15 pan/ tilt functions
- Easy wall/ ceiling mounting with included mounting parts



INDOOR



Art.-Nr. 101401

ALL2213 OUTDOOR WIRELESS MEGAPIXEL IP CAMERA

- Network camera wifi/ LAN outdoor
- 1 megapixel
- Integrated IR LEDs
- Supports P2P function with access via App (iOS & android)
- MicroSD card slot for local recording
- Wireless LAN interface as per IEEE802.11 b/g/n
- Easy wall/ ceiling mounting with included mounting parts



OUTDOOR



Art.-Nr. 101402

BUSINESS SECTOR

ALL2288v2 INDOOR MINI FIX DOME FULL HD IP CAMERA

- 4mm F1.5 CMOS progressive scan
- 78° angle of view & motion detection
- Full HD 1920x1080P resolution (2 Megapixel)
- 25fps at 1280x720p, 12,5fps at 1920x1080p frame rate
- Minimum illumination 0.1 LUX
- MJPEG & H.264 compression
- Power over Ethernet (802.3af)
- Micro-SD Slot for local recording up to 32 GB
- ONVIF support



INDOOR



Art.-Nr. 92872

ALL2295v2 POE+ OUTDOOR FIX DOME FULL HD IP-CAMERA

- Progressive scan CMOS sensor
- Full HD 1080p/ HD 720p real time dual streaming
- H.264 and MJPEG compression
- Remote zoom and focus (motorized lens)
- Motion detection, privacy masks
- Day/night mode (23 integrated IR LEDs)
- Recording to NAS (SMB) or local microSD card up to 32 GB
- Weather resistant / suitable for outdoor (IP66)
- ONVIF support
- Power over Ethernet by IEEE802.3af/at



OUTDOOR



Art.-Nr. 92886



ALL2295v2 INT OUTDOOR FIX DOME FULL HD IP CAMERA

- Motorized lens 103,5° ~ 34,3° focal length
- F1.2 CMOS sensor
- 1920x1080 pixel at 25/30fps; 0,2 lux day and 0,02 lux b/w resolution
- WDR & 3D noise reduction
- H.264 & MJPEG compression
- Alarm input/output
- integrated IR spotlight
- MicroSD card slot for local recording up to 32GB
- Analogue BNC outlet
- Power supply 12DC or Power over Ethernet
- Temperature range: -35° ~ 50°C with integrated heating



Art.-Nr. 102661

ALL2296v2 POE+ OUTDOOR BULLET FULL HD IP CAMERA

- Progressive scan CMOS sensor
- Full HD 1080p/ HD 720p real time dual streaming
- H.264 and MJPEG compression
- Remote zoom and focus (motorized lens)
- Day/night mode (23x integrated IR LED)
- Recording to NAS (SMB) or local micro sd card up to 32GB
- Weather-resistant/ outdoor suitable (IP66)
- Power over Ethernet by IEEE802.3af/at & ONVIF support
- Wide dynamic range „WDR”



Art.-Nr. 92887

ALL2298 OUTDOOR PTZ IP CAMERA 12X ZOOM

- Weather-resistant/ outdoor suitable (IP66)
- 1/4" exview CCD 3,8-45,6 mm lens
- 360° swivel-mounted & motion detection
- Resolution: 720x576 PAL
- Day/night vision 0,01 LUX
- MJPEG & H.264 compression
- Wide dynamic range „WDR” & 2D/3D noise reduction
- 12x optical zoom
- incl. wall holder



Art.-Nr. 83778

ALL2299 OUTDOOR FULL HD PTZ IP CAMERA 18X ZOOM

- Image: 1/2,8" sony progressive CMOS 4,7~84,6mm
- Outdoor ready IP66 (-40°C to +50°C)
- 360° swivel-mounted/ 18x optical zoom & motion detection
- Resolution: 1080p/XSGA/720p/XGA/SVGA/D1/VGA/CIF with 256 storage positions
- Day/ night vision 0,01 LUX & with back light compensation
- Compression: MJPEG & H.264
- AGC control, autofocus and manual focus
- Wide dynamic range „WDR” & 3D noise reduction
- IR 850NM
- Alarm INPUT/ OUTPUT
- Power over Ethernet by IEEE802.3at & ONVIF support
- incl. wall holder



Art.-Nr. 93712

ALL-CAM2305-LW

- Business networking camera IP LEDs + PIR sensor
- 3 megapixel
- Integrated IR LEDs up to 10m and IR cut filter & PIR motion detection sensor up to 10m
- 1/3" CMOS sensor
- 4mm @ F2.0 98,5° focal length for 1920x1080
- 3D noise reduction
- Digital WDR
- Back light compensation
- 20fps at 2048x1535p & 25fps at 1920x1080p
- Power over Ethernet by IEEE802.3af
- Internal microphone and loudspeaker
- Micro SD slot up to 64GB
- ONVIF support
- Integrated wifi IEEE802.11b/g/n



Art.-Nr. 114580

ALL-CAM2388-LVE

- 3MP mini dome networking camera IR LEDs/ vandal proof housing IP66
- Integrated IR LEDs with IR cut up to 10m
- 1/3" CMOS sensor
- 4mm at F2.0 75,8° focal length
- 3D DNR
- Digital WDR
- Back light compensation
- 15fps by 2048x1536p
- 30fps by 1920x1080fps
- Power over Ethernet by IEEE802.3af
- ONVIF support
- Internal micro SD card slot up to 64GB
- IP66 outdoor from -30°~60°C



Art.-Nr. 114619

ALL-CAM2397-LE

- Business networking camera IR LEDs & IP66 outdoor
- 3 megapixel
- Integrated IR LEDs with IR LED cut
- 3D noise reduction
- Digital WDR
- Back light compensation
- 20fps by 2048x1535p, 25fps by 1920x1080p
- Power over Ethernet at IEEE802.3af
- IP66 outdoor from -30°~60°C
- ONVIF support



Art.-Nr. 114579



ALL-CAM2385-L

- 6 megapixel business fisheye networking camera IR LEDs
- Integrated IR LEDs with IR LED cut
- 1/1,8" CMOS sensor
- 1,27mm at F2.8 360° focal length by 1920x1080p
- 3D noise reduction 120db
- Digital WDR
- Back light compensation
- High light
- Virtual PTZ
- Multiple views
- 25fps by 3072x2048p & 4x PTZ 30fps by 1024x768p
- Power over Ethernet by IEEE802.3af
- Integrated microphone and loudspeaker
- ONVIF support
- Integrated micro sd card slot



Art.-Nr. 114581

ALL2255 IP VIDEO SERVER

- MJPEG & H.264 compression
- Maximum resolution 720x576
- Full duplex audio-streaming
- Alarm input/ output
- 10/ 100MBPS LAN streaming
- Possibility to directly record to micro SD card (32GB)
- Maximum access: 20 users
- Power over Ethernet by IEEE802.3af



Art.-Nr. 85604

VDSL - VERY HIGH SPEED DIGITAL SUBSCRIBER LINE

VDSL is a DSL technique that enables higher data transmission rates via twisted two-wire cables than e.g. ADSL or ADSL2+. The ALLNET VDSL2 components are suitable for a length of 2.000 meters.

It enables a bandwidth of up to 100MBPS for short distances.

Simultaneously it is possible to connect and operate analog telephones.

This means, that you can use the existing telephone cabling for high performance data transmissions. This technology is the optimum solution especially for hotels, schools or hospitals.

DSLAM / MASTER-MODEM

ALL12616M DSLAM / SWITCH MASTER 16 PORT

- VDSL2 switch with 16x RJ45 VDSL2 ports
- 2x ethernet 10/100/1000MBPS & 2x SFP slots
- 19" metal housing
- Integrated POTS splitter
- Supports profil 17a/30a
- 100MBPS down & upstream
- UPBO/DPBO
- Supports IEEE802.1dSTP/ IEEE801.1w
- RSTP & IEEE802.1s MSTP
- Supports QoS / TOS and DSCP
- Jumbo packets up to 9K
- Bandwidth limit (rate control)



Art.-Nr. 118709

ALL1268M 8 PORT VDSL DSLAM / MASTER

- VDSL2 switch with 8x RJ45 VDSL2 ports
- 2x Ethernet 10/100/1000MBPS & 2x SFP slot (combo)
- 19" metal housing
- Compatible to ALL126AS2 / ALL126AS3
- Supports profil 17a/30a/8/12/17/30
- UPBO/DPBO
- Echo cancellation
- Integrated POTS splitter for all ports



Art.-Nr. 89095

ALL126AM2 VDSL DSLAM / MASTER

- VDSL2 master modem with integrated 4x 10/100MBPS switch
- Possibility to connect via twisted two-wire cable with up to 100MBPS
- Maximum connection length 2.5 km - depends on type of cable
- RJ12 assignment 2,3
- Integrated POTS splitter



Art.-Nr. 63905



ALL-MC115VDSL2 VDSL MASTER/ SLAVE SWITCHABLE

- VDSL2 master/slave modem
- Possibility to connect via twisted two-wire cable with up to 100MBPS
- Maximum connection length up to 1km, depends on type of cable
- Possibility for wall mounting
- Master/slave only with ALL-MC115VDSL and ALL1268M



Art.-Nr. 102395

SLAVE-MODEMS / BRIDGES

ALL126AS3 VECTORING COMPATIBLE

- VDSL2 slave modem with integrated 4x 10/100MBPS switch
- Possibility to connect via twisted two-wire cable with up to 100MBPS
- Maximum connection length 2.5km, depends on type of cable
- Supports DPBO (downstream power back off)
- Can be configured as VDSL2 modem for VDSL2 access and vectoring
- Supports ADSL2(+)
- Integrated POTS splitter



Art.-Nr. 103889

ALL126AS2 VDSL MODEM WITH SPLITTER

- VDSL2 slave modem with integrated 4x 10/100MBPS switch
- Possibility to connect via twisted two-wire cable with up to 100MBPS
- Maximum connection length 2.5km, depends on type of cable
- Supports DPBO (downstream power back off)
- Can be configured as VDSL2 modem for VDSL2 access
- Integrated POTS splitter



Art.-Nr. 63906



ALL126AM2 + ALL126AS2 WITH INTEGRATED SPLITTER BUNDLE

- ALLNET VDSL2 + ALL126AM2 set
- 100MBPS master modem
- ALLNET VDSL2 + ALL126AS2
- 100MBPS slave modem



Art.-Nr. 66303

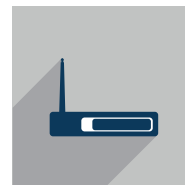
ALL-WR0500AC VDSL2 WIRELESS ROUTER WITH VECTORING

- Broadband modem router
- Integrated wifi AP with 300MBPS (IEEE802.11b/g/n/ac) dual band
- Encryption WEP 64/128
- WPA/WPA2
- WPS
- 4x 10/100MBPS switch
- L2TP
- PPTP
- IPSec
- Telephone connections for SIP provider



Art.-Nr. 115064

Works additionally as client to master DSLAM ALL126AM2 & ALL1268M.



WIRELESS CLIENTS

ALL-WA1200AC 2T2R 300MBPS 2,4GHZ & 867MBPS 5GHZ USB 3.0

- Realtek 8812AU chipset
- USB 3.0 standard
- IEEE802.11a/b/g/n/ac dual band 2,4 GHz & 5GHz
- Encryption: 64/128bit WEP
- WPA-PSK
- WPA2-PSK „AES&TKIP“ WPS & WPS2.0
- WMM
- Operating systems: Windows 2000/XP/Vista/7/8, Linux 2.6x, Mac OS X



Art.-Nr. 116361

ALL0233EXT 2T2R 300MBPS WIRELESS N DESKTOP USB ADAPTER

- External USB 2.0 adapter
- 2 removable antennas
- IEEE802.11n 300MBPS 2,4GHz
- RALINK RT2870F chipset
- 64/128 bit WEP encryption
- WPA encryption (TKIP with IEEE802.1x) & WPA2 encryption (AES with IEEE802.1x)
- Supports WPS (wifi protected setup)
- Supports WMM (wifi multimedia by IEEE802.11e QoS)
- Supports CCS (Cisco Compatible Extensions) wireless monitoring and fast roaming



Art.-Nr. 74713

ALL0233DB 2T2R 300MBPS USB-MINI-PEN ADAPTER

- RALINK/Mediatek RT5572 Chipset
- IEEE802.11a/b/g/n Dual-Band 2,4GHz & 5GHz
- Encryption: 64/128-Bit WEP
- WPA-PSK
- WPA2-PSK „AES & TKIP“ WPS & WPS2.0
- Operating systems: Windows 2000/XP/Vista/7/8, Linux 2.6x, Mac OS X



Art.-Nr. 113600

ALL0235NANO 1T1R 150MBPS USB NANO-ADAPTER

- Ralink/Mediatek MT7601 Chipset
- IEEE802.11b/g/n
- Encryption: WEP 64/128, WPA, WPA2, 802.1x, 802.11i
- Compatible with Windows 2000/XP/Vista/7/8 32/64-Bit, Linux, Mac



Art.-Nr. 111798

ALL-WA0100N 1T1R 150MBPS USB NANO-ADAPTER

- Realtek RTL8188EU Chipset
- IEEE802.11b/g/n
- Encryption: WEP 64/128, WPA, WPA2, 802.1x, 802.11i
- Compatible with Windows 2000/XP/Vista/7/8 32/64-Bit, Linux, Mac, Raspberry Pi „Raspbian, OpenELEC, Raspbmc“



Art.-Nr. 119387



BUSINESS SECTOR

ALL02850N WIRELESS N 300MBPS 2,4GHZ ACCESS POINT

- Up to 300MBPS wireless N 2.4 GHz
- 4 SSID configurable
- Safe wireless connection with WEP/WPA/WPA2/802.1x radius authentication
- Power supply via IEEE802.3af PoE or power supply
- SNMP configuration and management software



Art.-Nr. 104003

ALL02860ND WIRELESS N 300MBPS 2,4GHZ / 5GHZ ACCESS POINT

- 2.4 and 5GHz wireless N parallel usable
- Supports 802.1q SSID to VLAN tagging
- Up to 16 SSIDs, radius authentication
- Power supply via IEEE802.3af PoE or power supply
- SNMP configuration and management software



Art.-Nr. 104002

ALL02880ND WIRELESS N 300MBPS 2,4GHZ / 5GHZ ACCESS POINT

- 2.4 and 5GHz wireless N parallel usable
- Up to 16 SSIDs, radius authentication
- WPS, WDS and QoS (WMM)
- SNMP configuration and management software
- Easy configuration, professional functions
- Power supply via IEEE802.3af PoE or power supply



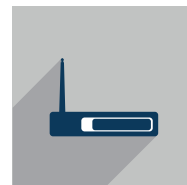
Art.-Nr. 104001

ALL-HS02530 WIRELESS N 300MBPS 2,4GHZ HOTSPOT IN A PRINTER

- 300MBPS wifi
- 2,4GHz hotspot with printer
- Easy handling with 3 buttons
- LAN option extension via micro USB adapter
- 10 profiles for maximum 30 users
- Integrated ticket system
- Expandable with further access points in LAN
- Suitable for hotels, bars, cafés, hairdresser etc.
- Records to external syslog server as well



Art.-Nr. 104128



ALL0358N WIRELESS N 300MBPS 2,4GHZ OUTDOOR ACCESS POINT

- 300MBPS, 2.4 GHz IEEE802.11a/n standard with integrated 13dBi directional antenna
- 64/128/256 bit WEP, WPA/WPA2, PSK/EAP encryption
- Access point/WDS/client bridge/client router/DHCP server/ client mode
- QoS (WMM)
- SNMP V1/V2c management
- LED display for signal strength/communication etc
- IP55 housing
- Inclusive PoE injector with power supply



Art.-Nr. 81725

ALL0558N WIRELESS N 300MBPS 5GHZ OUTDOOR ACCESS POINT

- 300MBPS, 5 GHz IEEE802.11a/n standard with integrated 13dBi directional antenna
- 64/128/256 bit WEP, WPA/WPA2, PSK/EAP encryption
- Access point/WDS/client bridge/client router/DHCP server/ client mode
- QoS (WMM)
- SNMP V1/V2c management
- LED display for signal strength/communication etc
- IP55 housing
- Inclusive PoE injector with power supply



Art.-Nr. 104000

ALL0315N WIRELESS N 300MBPS 2,4GHZ OUTDOOR ACCESS POINT

- Compatible to IEEE802.11b/g/n
- Water-resistant outdoor housing (IP67 standard)
- Integrated lightning protection for ethernet and antenna
- 2x LAN port 10/100/1000MBPS (1xPoE)
- Dimensions: 260mm(l) x 175mm(w) x 65mm (h)
- Access point, PTP bridge, PTMP bridge, repeater or client mode
- 2x N type antenna connection
- Power over Ethernet (IEEE802.3af)
- Inclusive PoE injector and power supply



Art.-Nr. 81696

ALL0174 MICRO USB LAN ADAPTER FOR ALL-HS02530

- Micro USB fast ethernet networking adapter
- Asix AX88772B chipset
- Half/ full duplex 10/100MBPS
- Automated detection of the ALL-HS02530
- Plug & play



Art.-Nr. 107812

WIRELESS AC

ALL-WAP02860AC 1750MBPS DUAL BAND ACCESS POINT

- 1750MBPS wireless AC Dual Band (2.4 & 5GHz) 3Tx+3Rx Access Point
- IEEE802.11a/b/g/n/ac
- 1x Gigabit Networking port
- PoE compatible (IEEE802.3af)
- integrated 3D sector-array MIMO antennas
- 4 different modes: access point/ client/ WDS access point/ WDS client
- 16 SSID (8x 2,4GHz / 8x 5GHz) + 2 GuestNetwork SSID (1x 2,4GHz / 1x 5GHz)
- 2 different ways of power supply: Power over Ethernet and external 12V, 2A power supply
- WDS
- WPS
- WMM
- 802.1q SSID to VLAN tagging
- WPA/WPA2 PSK/EAP
- 802.1X RADIUS
- Band-Steering
- SNMP v1/v2c/v3



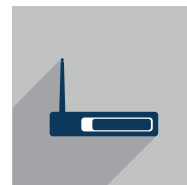
Art.-Nr. 116355

ALL-WAP0305AC 1750MBPS DUAL BAND OUTDOOR ACCESS POINT IP68

- 1750MBPS wireless AC Dual Band (2.4 und 5GHz) 3Tx+3Rx
- access point by IEEE802.11a/b/g/n/ac
- 2x Gigabit networking port
- PoE compatible by IEEE802.3at INPUT and 1x RJ45 Gigabit PoE OUTPUT
- 6x N-Type female connectors for 2,4 & 5GHz 5dbi antennas inclusive
- different modes: access point, MESH (2,4GHz), Client Bridge, WDS
- 16 SSID (8x 2,4GHz / 8x 5GHz) + 2 GuestNetwork SSID (1x 2,4 / 1x 5)
- WDS
- WPS
- WMM
- 802.1q SSID to VLAN tagging
- WPA/WPA2 PSK/EAP
- 802.1X RADIUS
- Band-Steering
- SNMP v1/v2c/v3



Art.-Nr. 116357



CONSUMER SECTOR

ALL0237R WIRELESS N 300MBPS ACCESS POINT / REPEATER 2,4GHZ

- 300MBPS Wireless N technology by IEEE802.11n standard
- Compatible to former wifi standards IEEE802.11b/g
- Extends the range of existing wifi networks
- All-in-one shape
- Device is attached directly to the the power outlet
- WPS security for easy installation and secure connection
- Usable as classic access point or client by ethernet socket



Art.-Nr. 99141

ALL0238RD WIRELESS N 300MBPS ACCESS POINT / REPEATER DUAL-BAND 2,4 & 5GHZ

- 300MBPS wireless N technology by IEEE802.11a/n standard
- Dualband 2,4 & 5GHz
- Compatible to former wifi standards IEEE802.11 b/g
- Extends the range of existing wifi networks
- Device is attached directly to the the power outlet
- WPS security for easy installation and secure connection
- Usable as classic access point or client by ethernet socket



Art.-Nr. 108724

CONTROLLER

ALL0360 WIRELESS CONTROLLER & VPN ROUTER 2-IN-1

- 4x WAN port WAN Router & CAPWAP WLAN controller
- 24 APs manageable „default“ / max. 50 APs
- 4x WAN ports for Load-Balancing
- 1x LAN Port
- Remote Management & Remote Access Control
- max. 100 VPN tunnel
- max. 2GBPS NAT Troughput / 76MBPS VPN Troughput
- Suitable access points: ALL0368 & ALL-VPN10 with special firmware



Art.-Nr. 111475

MANAGED AP

ALL0368 WIRELESS CONTROLLER AP

- Controller based AP
- 300MBPS wireless N technology by IEEE802.11n standard
- Compatible to former wifi standards IEEE802.11 b/g
- Usable with ALL0360



Art.-Nr. 111448

WIRELESS LAN ANTENNAS

ALLNET ANTENNA 2,4/ 5GHZ

- 5,5dBi gain by 5GHz
- 2,5dBi gain by 2,4GHz
- H360, V50 degrees radiation angle
- H360, V25 degrees radiation angle by 5GHz
- RP-SMA direct connector (Replacement antenna)



Art.-Nr. 35280

ALLNET ANTENNA 2,4/ 5GHZ

- DualBand directional antenna 2,4GHz
- Gain 2,5dBi by 2,4GHz, 5,5dBi by 5GHz
- H50, V60 degrees radiation angle
- Inclusive 1m RP-SMA connection cable



Art.-Nr. 35276

ALLNET ANTENNA 2,4GHZ, 14DBI

- 2,4GHz Yagi directional antenna
- 14dBi gain
- H25, V30 degrees radiation angle
- N-Type socket connection
- Mast assembly up to 216km/h wind load
- Mechanically up/down slewable up to +10° -15°
- 50 Ohm impedance
- Dimensions: 560 x 89 x 50mm, weight: 0,6 kg



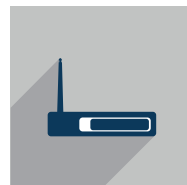
Art.-Nr. 35288

ALLNET ANTENNA 2,4GHZ, 12DBI

- 2,4GHz Yagi directional antenna
- 12dBi gain
- H50, V50 radiation angle
- N-type socket connection
- mast assembly up to 216km/h wind load



Art.-Nr. 35286



ALLNET ANTENNA 2,4GHZ, 14DBI FLAT PATCH

- 2,4GHz directional antenna
- 14dBi gain
- H30, V30 degrees radiation angle
- N-type socket connection
- Suitable for wall- und mast assembly
- Dimensions: 210 x 210 x 73 mm



OUTDOOR



Art.-Nr. 35283

ALLNET ANTENNA 2,4GHZ, 18DBI FLAT PATCH

- 2,4GHz directional antenna
- Gain: 9dBi A
- H70, V65 degrees radiation angle
- N-type socket connection with 0.25m cable
- Suitable for wall- and mast assembly
- Dimensions: 122x122x47mm



OUTDOOR



Art.-Nr. 35281

ALLNET ANTENNA 2,4GHZ, 7DBI

- Linear and vertical polarization
- 7dBi gain
- Opening angle horizontal 360°/vertical 20°
- R-SMA socket connection
- Weight: 275g
- Dimensions: 13x13x280mm



INDOOR



Art.-Nr. 63294

ANT-DUAL-270 PATCH 2,4, FLAT

- Flat patch antenna in 2,4GHz Band & 5,4 - 5,8GHz ISM Band
- 6dBi by 2,4GHz & 9dBi by 5GHz gain
- Directional = directional antenna dispersion characteristic
- 60° degrees horizontal und 60° vertical radiation angle
- N-type socket connection
- Suitable for wall- and mast assembly
- IP67 compatible housing
- Wind load up to ca. 160km/h



OUTDOOR



Art.-Nr. 92275

MORE ANTENNAS: WWW.ALLNET.DE



500MBPS WITH POE

ALL1682503 POWERLINE BRIDGE HOMEPLUG AV

- 500MBPS Powerline Bridge by IEEE1901 & Homeplug AV
- PoE by IEEE802.3af max. 15,4W performance
- Downward compatible to 200MBPS
- 128bit AES encryption
- 10/100MBPS Base-TX interface
- Dimensions: ca. 6,5x11,5x3,8cm (without socket) and 7,5cm with socket
- Maximum 8 Powerline adapter in one network



Art.-Nr. 112552

POWERLINE ACCESSORIES

ALL1688PC PHASE COUPLER

- 3 phase version with fourth LX phase for linking with other networks
- Frequency range 1-40MHz
- AC 250 / 440V, 4x 22nF X2, 3 phases (Lx linked to L3)

Attention! This device has to be installed by authorised specialist workshops.



Art.-Nr. 90246

ALL16881PC PHASE COUPLER - SIGNAL BRIDGE

- 3 phase version + extra galvanically separated phase to bridge FI circuit breakers
- Coupling out or electricity meter overall coupling
- Frequency range 1-70MHz
- Temperature range: -25°... +50°C

Attention: 3 Phase + „L/N“ . Higher range because of better linking in comparison to standard nphase couplers. Several electricity circuit can be linked to the ALL16881PC adapter. FI's can be bridged by several ALL16881PC.

Attention! This device has to be installed by authorised specialist workshops.



Art.-Nr. 112411



500MBPS

ALL168250

- HomePlug AV Standard
- Data transmission via 230V mains
- Usable with existing building cabling
- 500MBPS data rate
- max. 8 nodes in one network



Set of 1: Art.-Nr. 93100

Set of 2: Art.-Nr. 92752

Set of 3: Art.-Nr. 93101

ALL168255 PASSTROUGH

- HomePlug AV Standard
- Data transmission via 230V mains
- Usable with existing building cabling
- 500MBPS data rate
- QoS
- Integrated Schuko socket 230V 16A with integrated powerline filter
- 1x Fast-Ethernet interface
- max. 8 nodes in one network



Set of 1: Art.-Nr. 94252

Set of 2: Art.-Nr. 94259

2IN1 WITH WIRELESS ACCESSPOINT

ALL1682511

- HomePlug AV standard
- Data transmission via 230V mains
- Usable with existing building cabling
- 500MBPS data rate
- Integrated 300MBPS (802.11n) WLAN access Ppoint
- Simultaneously usage of wifi and LAN
- max. 8 nodes in one network



Art.-Nr. 99301



600MBPS WITH SMARTLINK

SMARTLINK / MIMO

The Powerline SmartLink or MIMO function uses not only the phase of the current for data transmission but also the earth wire. This enables a higher performance, reliability and transmission quality.

ALL168607 COAXNET

- HomePlug AV2 standard
- 600MBPS data transmission via Coax cabling (max. 700m)
- Suitable for existing building cabling
- Gigabit networking port
- Max. 15 clients
- MIMO technology via SmartLink



Art.-Nr. 111822

ALL168610 SINGLE

- HomePlug AV2 standard
- 600MBPS data transmission
- MIMO technology via SmartLink
- Suitable for existing building cabling
- Gigabit networking port
- Max. 15 clients



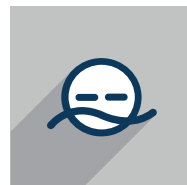
Art.-Nr. 103708

ALL168610 DOUBLE

- HomePlug AV2 standard
- 600MBPS data transmission
- Suitable for existing building cabling
- Gigabit networking port
- Max. 15 clients
- MIMO technology via SmartLink



Art.-Nr. 103709



ALL168615 DOUBLE

- HomePlug AV2 standard
- 600MBPS data transmission
- Suitable for existing building cabling
- Gigabit networking port
- Max. 15 clients
- MIMO technology via SmartLink



Art.-Nr. 103710

1200MBPS WITH SMARTLINK

ALL1681205

- 1200MBPS Homeplug AV2 Powerline Bridge
- Integrated Schuko socket with filter
- 2x Gigabit Ethernet interface
- 2~68Mhz frequency band
- MIMO technology via SmartLink
- Integrated QoS Quality of Service
- Max. 15 clients
- Supports IGMP managed multicast sessions
- Integrated 128bit AES encryption
- Downward compatible to Homeplug AV & Homeplug AV2 (from 200MBPS upwards)



Art.-Nr. 118597



INDUSTRIAL POWERLINE, THE NEXT GENERATION POWERLINE

WHEN IS INDUSTRIAL POWERLINE NEEDED?

Common Powerline bridges are based on HomePlug or HomePlugAV standard. The devices are limited in scalability because of their network access methods. These Powerline standards support only up to 15 devices. If more devices are used, the bandwidth will decrease dramatically. The maximum distance is limited to 200 meter, which is usually enough for home users. In addition, both HomePlug standards are not offering bandwidth limitations, so that all devices share the bandwidth with no priority settings available.

Since there are no data traffic settings possible, each user can be connected to all devices in the Powerline network. Only the data transmission is protected by powerful encryption standards.

ALLNET INDUSTRIAL POWERLINE IS THE SOLUTION.

Industrial Powerline offers a brutto data transmission of maximum 200Mbps or up to 70Mbps in netto transmission. The maximum cable length is limited to 200 meters but can be extended to up to 1.000 meters by using coax cables. Both techniques can be used in parallel to extend the network's flexibility and performance. Industrial Powerline uses a so called "headend station" for data transmission. Each Headend unit can administrate up to 62 stations by assigning different time slots to each connected device. If more devices should be installed or the distance is larger than 200 meters, additional repeaters can be installed to increase the signal.

A connected Headend station is connected as a client and can manage the integration of further 62 stations. The time slot method, similar to a token ring, offers additional administration options, e.g. bandwidth control of each station, QoS (Quality of Service), VLAN and access control to the repeater or Headend unit for each client. Two time domain repeater can be used in the transmission path of two devices. This allows a large number of clients in a tree-based structure and a noticeable enhancement of the cable length.

Within larger installations the transmission time of network packages can be too slow. The Frequency Domain Repeater splits the used frequency ranges to offer a parallel operation of several network segments.

ADVANTAGES OF INDUSTRIAL POWERLINE:

- Integration of more than 15 devices
- Extended security options
- Powerful management and diagnosis tools
- Integration of repeaters to enlarge the distance
- Separate bandwidth assignment for each station

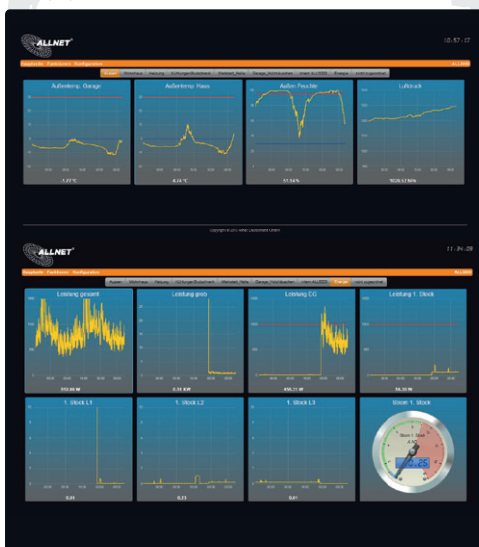


ALLNET follows the concept of intelligent control of the increasing complexity of building technology via network and internet. Intelligent building technology doesn't only offer more comfort, but also promotes the reduction of energy costs. Controlled centrally and accessible via network / internet, the ALLNET home automation products enable intelligent building control regardless of time and location.

The **IP-CONTROL CENTERS** are professional ethernet sensormeters for variable usage scenarios in the professional home and industrial environment.

The main task of the IP control centers ALL3418v2 / ALL3500 / ALL3500PoE / ALL3505 / ALL 4500 / ALL5000 is perfect for the recognition and signalization of the ambient conditions, e.g. temperature, humidity, pressure, the activation of switching inputs via contacts or relays and so much more. This can take place manually, time-controlled or regardless of the recorded values. Different scenarios like the control of light, shutters, air conditioning and household appliances can be controlled by the ALL4500 / ALL 5000. From temperature acquisition and on demand heating of several rooms, control of garden irrigation, gas smell and water ingress alerting to automatic shutters opening and closing, depending on daylight. There are no limits for your creative ideas.

You control everything from your PC, notebook or other mobile devices, e.g. smartphone or tablet, regardless of whether you're staying at the same building or on another continent. The ALL4500 / ALL5000 control units can be addressed and adjusted via unique IP addresses, by cable or wireless via wifi. The determined values can be called up directly from the device via web browser or e-mailed, e.g. in case of exceedances or undershooting of preset limits. An integrated and open-source XML interface allows you to individually interrogate the database via internet with external applications. To this, you can find several examples of use on page 15. The ALL4500 / ALL5000 offer a linux based open source operation system. Therefore it offers enough space for own software developments and adjustments, suitable for your individual operation purpose.





POWMETER - FIND AND ELIMINATE YOUR POWER GUZZLERS!

To save electricity sustainably, the concrete consumption must be known. ALLNET's powermeters ALL3690 and ALL3691 help to identify peak loads and main factors of your power consumption, which can be minimized that way. The powermeter allows direct access to the three phases in the electricity line. The matching induction clips deliver the current consumption data, so that an intervention into the cabling is not necessary: That improves safety and comfort.

ALL3690 POWERMETER PM1 INDUCTION

- Measuring of electricity
- Connection to all 3 phases via induction
- Incl. induction clips and measuring cable, lenght: 0,5m
- Measuring accuracy +/- 5%
- 1 conenction for SO counter sensor



Art.-Nr. 84205

ALL3691 POWERMETER PM2 INDUCTION

- 2 connections for current clamps (set of three)
- 2 connections for SO counter
- 4x D0-Bus counter
- 1x 50A measuring clamps incl. (3 pieces)
- Measuring accuracy +/- 5%



Art.-Nr. 90325

ALL3692 POWERMETER / SMARTMETER PM3 D0-OPTICAL

- 4 connections for D0 OKK sensor head (ALL3688 / ALL3689)
- 2x I2C sensor / ports
- 2x external USB connections for optimum Plugwise/EnOcean adapters
- 1x OKK (ALL3688) incl.
- 1x RJ45 10/100MBPS LAN interface
- 1x 300MBPS wireless LAN (2x unscrewable R-SMA antennas)



Art.-Nr. 101241



IP CONTROL CENTERS

ALL3418v2 IP NETWORK SENSORMETER

- Compact, network-compatible measuring instrument for the connection of all sensors
- **1 sensor port**
- 1x 100MBPS LAN / 150MBPS wifi
- E-mail alarm function
- Incl. ALL3006 temperature sensor
- Power supply via 12V power supply



Art.-Nr. 95629

ALL3500 IP BUILDING-AUTOMATION-CENTRAL

- **4 sensor ports can also be expanded with ALL4504 / 4404**
- USB host port
- 1x 100MBPS LAN / 150MBPS wifi
- 1 serial port (console)
- 4 input for contacts e.g. buttons
- 4 relay output 250V/8A
- Incl. power supply 12V/1A & ALL3006 temperature sensor



Art.-Nr. 98686

ALL3500POE IP BUILDING-AUTOMATION-CENTRAL

- **4 Sensorports auch erweiterbar mit ALL4504/4404**
- USB host port
- 1x 100MBPS LAN / 150MBPS wifi
- 1 serial port (console)
- 4 input for contacts e.g. buttons
- 4 relay output 250V/8A
- Incl. power supply 12V/1A & ALL3006 temperature sensor
- Supports PoE



Art.-Nr. 101636

ALL3505 TOP-HAT IP BUILDING-AUTOMATION-CENTRAL

- ALL3505 for top-hat rail
- USB host port
- 1x 100MBPS LAN / 150MBPS wifi
- **8 sensorports expandable with ALL4504/4404**
- 1 serial port RJ45
- Incl. power supply 12V/1A phoenix clamp & ALL3006 temperature sensor
- 1x R-SMA Front antenna connection
- Width: 10,5cm corresponds to 6 TE



Art.-Nr. 104126

ALL4500 SENSORMETER IP BUILDING-AUTOMATION-CENTRAL

- 8x sensor ports (RJ45) expandable with ALL4504/4404
- 2x USB 2.0 port
- 4x RS232
- 1x RS485
- Voltage supply either with 100 - 230V AC wall wart or 12V DC



Art.-Nr. 84148

ALL5000 SENSORMETER IP BUILDING-AUTOMATION-CENTRAL

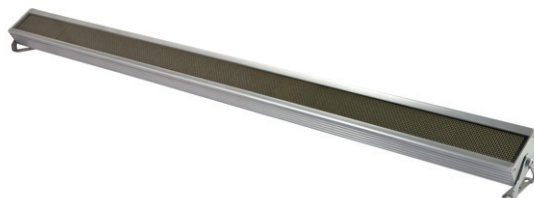
- 16 sensorports expandable with ALL4504/4404
- 4x reedrelais
- 4x 230V relais
- 4x A/D converter INPUT
- 4x contact access
- 3x USB 2.0 port
- 2x RS232
- Voltage supply either with 100 - 230V AC wall wart or 12V DC



Art.-Nr. 81174

POE LED INFORMATION DISPLAY

- Access via network
- Power supply via PoE
- Intuitive web interface for configuration
- Integration via RSS-feeds, exchange ticker and individual texts
- XML interface for data retrieval
- Four different lengths
- Individual lengths on request
- Remote control via XML and JSON
- White font color



269mm Art.-Nr. 102329

525mm Art.-Nr. 105763

781mm Art.-Nr. 105764

1037mm Art.-Nr. 105765





IP CONTROL ACTORS

ALL3073WLAN 8A NETWORK SOCKETS

- Adapter with LAN interface
- Enables switching of connected consumer devices (up to 8A) via integrated Webserver
- 10/100MBPS RJ45 network connection
- For 200 - 250V AC voltage
- Power consumption: 2,7W standby, 3,1W relay on



Art.-Nr. 94320

ALL3075v3 WLAN 16A NETWORK SOCKETS WITH CURRENT MEASUREMENT OPTION

- Adapter with LAN interface
- Enables switching of connected consumer devices (up to 16A) via integrated Webserver
- Integrated current measurement function
- 10/100MBPS RJ45 network connection
- For 200 - 250V AC voltage
- Power consumption: 2,7W standby, 3,1W relay on



Art.-Nr. 104248

ALL4075 NETWORK SWITCHING DEVICE QUADRUPLE RELAY 230V/10A

- Handling via webbrowser
- Individual switching of the relays via WEB menu
- Time control, USB master/slave or manually via button
- Temperature and humidity measuring via optional Sensor
- Access via Ethernet 10/100MBPS or 150MBPS WLAN
- 1x USB host port for Plugwise / EnOcean option
- Power consumption <2,8W



Art.-Nr. 92996

ALL4076 NETWORK SWITCHING DEVICE SEXTUPLE SOCKET STRIP

- Intelligent sextuple socket strip for switching up to 10A each
- Handling via webbrowser
- Individual switching of the sockets via WEB menu
- Time control, USB master/slave or manually via button
- Temperature and humidity measuring via optional Sensor
- Access via Ethernet 10/100MBPS or 150MBPS WLAN
- 1x USB host port for Plugwise / EnOcean option
- Power consumption <2,8W



Art.-Nr. 94994

OPTIONAL SENSORS AND ACTORS

FOR THE ALL3418V2 / ALL350X / ALL4500 / ALL5000 SERIES

ArtNr.	Description	ALL3418V2	ALL3500	(ALL4000V2)	ALL4001	ALL4500	ALL5000	ALL3692	other
		ArtNr. 95629	ArtNr. 98686	ArtNr. 86173 EOL	ArtNr. 59976	ArtNr. 84148	ArtNr. 81174	ArtNr. 101241	Combination
28196	ALL3002 1x relay output	x	x	x	x	x	x	x	
28197	ALL3003 1x output optocoupler	x	x	x	x	x	x	x	
27166	ALL3006 Temp sensor indoor	x	x	x	x	x	x	x	ALL4076
26780	ALL3015 Temp sensor waterproof	x	x	x	x	x	x	x	
27359	ALL3018 Temp/ humidity sensor	x	x	x	x	x	x	x	ALL4076
33501	ALL3024 Mains voltage monitor	x	x	x	x	x	x	x	
27904	ALL3025 Contact counter	x	x	x	x	x	x	x	
76814	ALL3032 Brightness sensor	x	x	x	x	x	x	x	
34417	ALL3036 Liquid level sensor vertical	x	x	x	x	x	x	x	
34418	ALL3037 Liquid level sensor horizontal	x	x	x	x	x	x	x	
36788	ALL3051 PIR motion detector	x	x	x	x	x	x	x	
61957	ALL3054 Shocksensor	x	x	x	x	x	x	x	
61956	ALL4003 HUT/ portextender 3 port				x				
60987	ALL4006 HUT/ temp Sensor	x	x	x	x	x	x	x	
60988	ALL4018 HUT/ temp/ humidity sensor	x	x	x	x	x	x	x	
61959	ALL4020 HUT/ 1x relay switching output	x	x	x	x	x	x	x	
64681	ALL4022 HUT/ VDC voltmeter			x	x				
72556	ALL4023 HUT/ 3xVDC voltmeter	x	x	x	x	x	x	x	
60991	ALL4024 HUT/ voltmeter 1 phase	x	x	x	x	x	x	x	
61953	ALL4025 HUT/ Contact counter S0 bus	x	x	x	x	x	x	x	

COMPATIBLE D0 ELECTRIC METER FOR ALL3692

COMPATIBILITY LIST BY D0 „SLM-PROFIL“

Producer	Type	Description	Reference	Supply
NZR	EHZ	Three-phase meter	x	-
NZR	Q3B	Three-phase meter	x	-
Easymeter	Q3d	Three-phase meter	x	-
Easymeter	Q3DA1024	Three-phase meter	x	x
Voltcraft	VSM-105	Three-phase, two-way counter	x	x
EMH	ED100L	Phase meter	-	1-phase
EMH	ED300L	Three-phase meter	x	x
EMH	EHZ	Three-phase, two-way counter	x	x
Hager	EHZ363ZA	Bidirectional counter	x	x
Hager	EHZ363LA	Three-phase delivery narrator	-	x
Hager	EHZ363WA	Three-phase meter	x	-
Voltcraft	VSM-105	Bidirectional counter	x	x
Itron	HZ3-A20D	Phase meter	x	-



Status february 2015, more electric meters following

D0 electric meter with
optical ALL3688 D0
read head



ArtNr.	Description	ALL3418V2	ALL3500	(ALL4000V2)	ALL4001	ALL4500	ALL5000	ALL3692	other
		ArtNr. 95629	ArtNr. 98686	ArtNr. 86173 EOL	ArtNr. 59976	ArtNr. 84148	ArtNr. 81174	ArtNr. 101241	Combination
59502	ALL4027 HUT/ 8 port 250V/ 6A relay	x	x	x	x	x	x	x	
60990	ALL4029 HUT/ Temp/ humidity/ pressure sensor	x	x	x	x	x	x	x	
91666	ALL4504 Port multiplexer 8x	x	x			x	x	x	
88283	ALL4506 Temp sensor	x	x	x	x	x	x	x	ALL4076
88284	ALL4520 Relay output1x16A	x	x			x	x	x	
88282	ALL4524 Mains voltage monitor	x	x	x	x	x	x	x	
89722	ALL4526 1xSwitching input	x	x	x	x	x	x	x	
88281	ALL4529 Temp/ humidity/ pressure sensor	x	x			x	x	x	ALL4076
88285	ALL4532 Brightness sensor analog	x	x			x	x	x	
98820	ALL4404 Port multiplexer 8x	x	x			x	x	x	
98821	ALL4406 Temp sensor	x	x	x	x	x	x	x	ALL4076
102436	ALL4418 Temp/ humidity Sensor	x	x	x	x	x	x	x	ALL4076
98824	ALL4425 Contact counter S0 Bus	x	x	x	x	x	x	x	
98825	ALL4427 4 port relay 250V/10A	x	x	S	S	x	x	x	
98828	ALL4429 Temp/ humidity/ pressure sensor	x	x			x	x	x	ALL4076
98831	ALL4432 Brightness sensor analog	x	x			x	x	x	
98836	ALL4442 4x contact input	x	x	S	S	x	x	x	
98838	ALL4444 4x Mains voltage monitor	x	x	x	x	x	x	x	
98840	ALL4452 PIR motion detector	x	x	x	x	x	x	x	
102435	ALL4025 HUT/ contact counter S0 Bus	x	x			x	x	x	
115545	ALL4408 PT100-Interface	x	x			x	x	x	
115537	ALL4409 PT1000-Interface	x	x			x	x	x	
115537	ALL4590 Powermeter Sensor (Induction)	x	x			x	x		

S: only with specic conguration

OPTIONAL ACCESSORIES

FOR POWERMETER SERIES ALL3690 / 3691 / ALL3692

ArtNr.	Description	ALL3690	ALL3691	ALL4590	ALL3692
		ArtNr. 84205	ArtNr. 90325	ArtNr. 87785	ArtNr. 101241
88380	50A Induction Clamp Set	x	x	x	
84807	200A Induction Clamp Set	x	x	x	
88373	800A Induction Clamp Set	x	x	x	
92145	ALL3689 optical read head		x		x
101240	ALL3688 optical, magnetic read head		x		x
87785	ALL4590 Power Meter module I2C (induction)				x



ALL3688

FIND MORE INFORMATIONEN ABOUT THE SENSORS: WWW.ALLNET.DE

ALL-NAS200 NAS RAID SYSTEM 2X HDD

- Supports either up to 2x 2,5" or 3,5" SATA hard drives 3000GB (3TB)
- Dual-Core Cavium SoC processor
- 256 MB RAM DDR2
- 2x Gigabit network connection
- 1x USB 2.0 target
- Supports RAID 0, 1
- SMB/CIFS, HTTP/HTTPS, FTP, NFS, AFP; UPnP / DLNA via Twonkymedia module (optional)



Art.-Nr. 92875

ALL-NAS600 NAS RAID SYSTEM 6X HDD

- Supports up to 6x 3,5" SATA hard drives 3000GB (3TB)
- Pentium G620 2,6GHz CPU
- 2x Gigabit network connection
- 4x USB 2.0 host
- Supports RAID 0, 1, 5, 6, 10, 50 & JBOD
- Dedicated / Global Hot-Spare
- Online RAID migration / expansion
- SMB/CIFS, HTTP/HTTPS, FTP, NFS v4, AFP;
- Link aggregation with Load-Balance, Failover, 802.3ad, Balance-XOR etc., supports iSCSI etc.



Art.-Nr. 93731

ALL-NAS800 NAS RAID SYSTEM 8X HDD

- Supports up to 8x 3,5" SATA hard drives 3000GB (3TB)
- Intel Core i3 2120 3,3GHz CPU
- 2x Gigabit network connection
- 4x USB 2.0 host
- Supports RAID 0, 1, 5, 6, 10, 50, 60 & JBOD
- Dedicated / Global Hot-Spare
- Online RAID migration / expansion
- SMB/CIFS, HTTP/HTTPS, FTP, NFS v4, AFP
- Link aggregation with Load-Balance, Failover, 802.3ad, Balance-XOR etc., Supports iSCSI etc.



Art.-Nr. 93732

ALL-NAS1000 NAS RAID SYSTEM 10X HDD

- Supports up to 10x 3,5" SATA hard drives 4000GB (4TB)
- Intel Xeon E3-1225 3,1GHz CPU
- 4GB DDR3
- 2x Gigabit network connection
- 1x PCI Express Slot x2
- 4x USB 2.0 Host
- Supports RAID 0, 1, 5, 6, 10, 50, 60 & JBOD
- Dedicated / Global Hot-Spare
- Online RAID Migration / Expansion
- SMB/CIFS, HTTP/HTTPS, FTP, NFS v4, AFP
- Link aggregation with Load-Balance, Failover, 802.3ad, Balance-XOR etc., Supports iSCSI etc.



Art.-Nr. 93733



ALL60700 19" NAS RAID SYSTEM 4X HDD

- 4x internal SATA I/II, 1 x external eSATA interfaces
- Hot-Swap function
- 2 LAN-Ports Gigabit
- Supports RAID-Modi: 0, 1, 5, 6, 10, JBOD
- 6x USB 2.0-Host-Port
- 1x RS232 for connection to USV
- Network-data protocols: SMB/CIFS, HTTP/HTTPS, FTP, NFS v3, AFP
- Multimedia-features: iTunes Sharing Server, Web-Photo-Server
- With Dual-DOM function
- Modules: NBZ Newsmodule, Mail server, Download Manager (FTP,HTTP,BT), MySQL Module, Web Server, Bi-directional USB Copy
- Operating mode: NAS, DAS or iSCSI



Art.-Nr. 83235

HOME PNA 3.1

Home PNA is an easy (most existing telephone cabling) building cabling for computer networks, e.g. for the common usage of internet connection. Thereby, the application of phonecalls is not impaired. Additionally, there are devices, that use the existing TV cabling for data transmission. Several computers can be connected. In the beginning it was possible to achieve speeds from 1 to 2MBPS, meanwhile with HomePNA the speeds range from 3.1 up to 192MBPS. HomePNA works with a frequency range from 4 up to 10MHz. Home PNA is a widespread technique for home networks in the USA.

ALL-HPNA3 BRIDGE CONVERTER

- 2x RJ45 Ethernet port 10/100MBPS
- 1x RJ11 Home PNA port for two-wire copper cable
- 1x RJ11 phone port
- HPNA data rates up to 92MBPS (cable length depending, max. 250 meters)
- QoS
- TagVLAN
- IGMP Snooping Support
- Plug & Play



Art.-Nr. 94134

ALL-HPNA3 BRIDGE CONVERTER BUNDLE

- 2x RJ45 Ethernet port 10/100MBPS
- 1x RJ11 Home PNA port for two-wire copper cable
- 1x RJ11 phone port
- HPNA data rates up to 92MBPS (cable length depending, max. 250 meters)
- QoS
- TagVLAN
- IGMP Snooping Support
- Plug & Play



Art.-Nr. 96090

10G GIGABIT ETHERNET STACKING



ALL-SG8826PMX-10G 24X GIGABIT POE AT 500W (TP)

- ALL-SG8826PMX-10G 24x Gigabit PoE AT 500W (TP) + 2x SFP/SFP+ „10G“ slots
- Layer2+ full management
- **Via 2x SFP+ up to 16x stackable**
- VLAN & Advanced VLAN
- Trunking
- IGMP Snooping
- Port/ tag based/DSCP Quality of Service QoS
- 32K MAC-address store
- 4MB Buffer storage
- 88Gbps switch capacity
- 10K Jumbo Frames
- IEEE802.1x Port authentication
- Spanning Tree
- Rapid Spanning Tree
- Flow control
- LoopDetection
- Storm-Control
- **IEEE802.3at 400W total Sharing**
- PoE Overload Protection
- PoE Power Level Setting per Port
- PoE via 2 and 4-pair cables
- Suitable for mixed stacking (PoE/ non PoE)
- Dimensions: 33,5x44,5x5cm „1HE“



Art.-Nr. 112082

ALL-SG8826MX-10G 24X GIGABIT (TP)

- ALL-SG8826MX-10G 24x Gigabit (TP) + 2x SFP/SFP+ „10G fähig“ Slots
- Layer2+ full management
- **Via 2x SFP+ up to 16x stackable**
- VLAN & Advanced VLAN
- Trunking
- IGMP Snooping
- Port/ tag based/DSCP Quality of Service QoS
- 32K MAC-address store
- 4MB Buffer storage
- 88Gbps switch capacity
- 10K Jumbo Frames
- IEEE802.1x Port authentication
- Spanning Tree
- Rapid Spanning Tree
- Flow control
- LoopDetection
- Storm-Control
- Suitable for mixed stacking (PoE/ non PoE)
- Dimensions: 22x44,5x4,7cm „1HE“



Art.-Nr. 112203



10G STACK „DAC“ DIRECT-ATTACHED-CABLE



ALL4759-0,5 0,5M COPPER LENGTH

- for ALLNET/ D-Link/ Lancom/Allied Telesyn/Zyxel
- Inexpensive stacking-Kabel for ALL-SG8826PMX-10G and ALL-SG8826PM-10G



Art.-Nr. 114295

ALL4759-1 1M COPPER LENGTH4 SENSORPORTS EXPANDABLE WITH ALL4504/4404

- for ALLNET/ D-Link/ Lancom/Allied Telesyn/Zyxel
- Inexpensive stacking-cable for ALL-SG8826PMX-10G and ALL-SG8826PM-10G



Art.-Nr. 113483

ALL4759-3 3M COPPER LENGTH

- for ALLNET/ D-Link/ Lancom/Allied Telesyn/Zyxel
- Inexpensive stacking-cable for ALL-SG8826PMX-10G and ALL-SG8826PM-10G



Art.-Nr. 113807



POWER OVER ETHERNET

GIGABIT 1000MBPS

ALL-SG8926PM 24 PORT FULL POE

- 24 ports Gigabit full PoE by IEEE802.3at & IEEE802.3af + 2 ports Gigabit SFP with max. 400W PoE-Budget
- Manageable with PoE ports ON/OFF
- IEEE 802.1Q VLAN Tagging
- Jumbo Frames and IGMP Snooping support
- Link Aggregation
- Spanning Tree
- Flow Control, Loop-Detection
- QoS Features
- SNMP v1/v2/v2c/v3
- Port-Mirroring „one to One /Many to One“
- Cable-Diagnostics
- Internal power supply



Art.-Nr. 113199

ALL8844WMP 24 PORT GIGABIT POE AF SMART MANAGED

- 20 ports Gigabit full PoE by IEEE8023.af
- 4 Gigabit Combo Ports SFP/RJ45
- Web-Management-Rack-Switch
- Port and tag based VLAN
- Port-Mirroring
- Spanning Tree
- PoE switch on/off via webinterface
- Band width control
- QoS priorities
- MAC address filter etc.
- Configuration via web browser



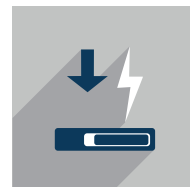
Art.-Nr. 87517

ALL8809WMP 8 PORT GIGABIT HPOE AT SMART MANAGED / 2 COMBO

- 8x Gigabit TX PoE Switch + 2x Gigabit Combo SFP/TP „PoE“
- Either 8x IEEE802.3af (max. 16,25W per port) or 8x IEEE802.3at (max. 30W per port) full-/ halfduplex
- Auto MDI/MDI-X
- Metal housing with internal power supply
- 260W total
- 176K Bytes Memory Buffer
- 9,6K frame size
- 8K MAC address store
- VLAN
- SNMP
- QoS
- IGMP
- Port-Mirroring
- Incl. 19" angles



Art.-Nr. 98555



ALL8894WMP 8 PORT GIGABIT / 4 PORTS WITH POE AF SMART MANAGED

- 8 Port Switch 10/100/1000MBPS
- Half-/Full-Duplex
- 4 ports POE by IEEE802.3af specifications
- Auto MDI/MDI-X
- Fanless
- Internal power supply
- Power over Ethernet
- Webmanagement
- PoE switchable via webinterface



Art.-Nr. 90956

ALL8808POE 8 PORT SWITCH UNMANAGED 8 PORT

- 8 Port desktop Gigabit PoE Switch
- Either 8x IEEE802.3af (max. 15,4W pro Port) or 4x IEEE802.3at (max. 30W pro Port)
- Full-/Halfduplex
- Auto MDI/MDI-X
- Metal housing with internal power supply
- Fanless
- 150W Total
- 2MB Memory Buffer
- 9K frame size
- 8K MAC address store
- Power consumption without link only ca. 2,8W
- Incl. 19" angles



Art.-Nr. 93392

ALL8804POE+ 8 PORT SWITCH UNMANAGED - 4 PORTS POE

- 8 Port desktop Gigabit PoE Switch,
- Either 4x IEEE802.3af (max. 15,4W per port) or 2x IEEE802.3at (max. 30W per port)
- Full-/Halfduplex
- Auto MDI/MDI-X
- Metal housing with internal power supply
- Fanless
- 63W Total
- Support 802.11p QoS
- IEEE802.3x flow control
- 12K Memory Buffer
- 8K MAC address store
- Incl. 19" angles



Art.-Nr. 99315



POWER OVER ETHERNET

FAST ETHERNET 100MBPS

ALL0484WMP POE-SWITCH

- 24 LAN ports 10 / 100MBPS with PoE Ffunctions
- 2× Gigabit Combo TX/SFP miniGBICS Slot Auto-Negotiation
- Auto MDI/MDI-X
- Full/Half Duplex Transfer Mode on every port
- Store-and-Forward switching
- 4K MAC store
- 2,75 MB packet buffer
- IEEE 802.3x Flow Control for Full-Duplex mode ports
- Port based VLAN
- Port based trunking
- Port mirroring
- Configuration via webbrowser
- Possibility of 19" assembly
- PoE standard 802.3.af



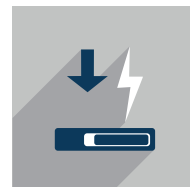
Art.-Nr. 79361

ALL0486POE SWITCH UNMANAGED 16 PORT FAST ETHERNET

- 16 port switch 10/100MBPS Half-/Full-Duplex, among them 8 Ports PoE by IEEE802.3af specification
- Automatic PoE-classification-recognition
- 15.4W on maximum 8 PoE ports at the same time each
- Auto MDI/MDI-X
- Internal power supply
- Possibility of wall assembly
- 130W PoE budget



Art.-Nr. 111447



INJECTORS

ALL0488v3 GIGABIT POE AF INJECTOR 15,4W

- IEEE 802.3af standard (48VDC)
- Input: 1x PoE In TP socket, (48VDC/0.5A)
- Output: 1x TP-Output Data Out
- Class 0: 48VDC@15,4W
- Class 1: 48VDC@4W
- Class 2: 48VDC@7W
- Integrated power supply



Art.-Nr. 93379

ALL0489v2 GIGABIT HPOE AT INJECTOR 30W

- IEEE 802.3af & IEEE802.3at High Power PoE
- Input: 1x Gigabit Base-TX
- Output: 1xGigabit Base-TX
- Power consumption: 30 watts (max.)
- 1 device with class 4 (30W) can be connected
- Integrated power supply



Art.-Nr. 89537

ALL048900v2 SMART LT POE INJECTOR 90W

- Power over Ethernet Injector by IEEE802.3af 15,4W/IEEE802.3at 25W/IEEE802.3at++ 90W
- 2x 10/100/1000MBPS Base-T Gigabit interfaces
- External 55V 2A power supply, temperature range: 0° ~ 40°

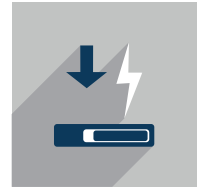
Rev. B now has the SMART function which means that all common PoE registration options up to 90W is possible via several PINs. Compatible with 60W IP cameras from Samsung and Axis.



Art.-Nr. 112270



GIGABIT POE PD SWITCHES



With the ALLNET PD switches you are fully independent of power sockets since the switch is powered via PoE by itself.. The remaining power is provided for the supply of the end devices and enables highest performance.

ALL8845PD UNMANAGED 5 PORT GIGABIT SWITCH

- Desktop PoE switch
- PoE powered device
- Switch can be operated via PoE (IEEE802.3at, High Power 25W /IEEE802.3af Low-Power 15,4W) or included power supply 36W
- 5x RJ45 Gigabit ports
- 4x Gigabit PoE OUT(IEEE802.3af)
- Compact design



Art.-Nr. 93199

ALL-SG8205PD UNMANAGED 5 PORT GIGABIT SWITCH

- Desktop PoE switch
- PoE powered device
- Switch can be operated via PoE (IEEE802.3at, High Power 25W /IEEE802.3af Low-Power 15,4W) or included power supply 36W
- 5x RJ45 Gigabit ports
- 2x Gigabit PoE OUT (IEEE802.3af)
- 2x Gigabit standard
- 1x Gigabit PoE IN



Art.-Nr. 112532

ALL-SG8208PD UNMANAGED 8 PORT GIGABIT SWITCH

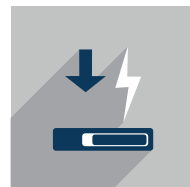
- Desktop PoE switch
- PoE powered device
- Switch can be operated via PoE (IEEE802.3at, High Power 25W /IEEE802.3af Low-Power 15,4W) or included power supply 36W
- 8x RJ45 Gigabit ports
- 4x Gigabit PoE OUT (IEEE802.3af)
- 3x Gigabit standard
- 1x Gigabit PoE IN



Art.-Nr. 118887



LT POWER OVER ETHERNET



The ALLNET LT terminal devices support not only the IEEE802.3af standard with a performance of 15,4W and the IEEE802.3at High Power standard with 30W, but also IEEE802.3at++ with 90 watts performance via CAT6/CAT7 networking cables.

INJECTOR

ALL048900v2 SMART INJECTOR 90W

- Power over Ethernet Injector by IEEE802.3af 15,4W/IEEE802.3at 25W/IEEE802.3at++ 90W
- 2x 10/100/1000MBPS Base-T Gigabit interfaces
- External 56V 2A power supply, temperature range: 0° ~ 40°

Rev. B now has the SMART function which means that all common PoE registration options up to 90W is possible via several PINs. Compatible with 60W IP cameras from Samsung and Axis.



Art.-Nr. 112270

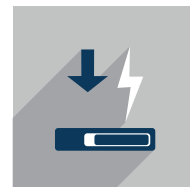
SWITCH

ALL048605PD SWITCH UNMANAGED 5 PORT GIGABIT LT-POE

- Unmanaged 5 port PoE-Switch for working places
- 3 combinable power supply options:
 1. PoE (IEEE802.3af/at/LTPoE via PD-Port with up to 90W
 2. External 56V DC power supply up to 500W (4 PoE ports up to 90W each)
 3. DC supply with 12-48V (e.g. battery or solar)
- LT PoE is available at all four ports, depends on the capacity of the power supply
- 5x RJ45 Gigabit ports, among them 4x PoE OUT (IEEE802.3af/at/LT PoE) and 1x PoE IN
- Fanless design
- Own power consumption ca. 5W
- PoE budget 80W at PD supply via LT PoE compatible injector
- Smart PoE scan recognizes unusual devices
- Chipset RTL8370



Art.-Nr. 113046



SPLITTERS

ALL048700POE SPLITTER 90W

- IEEE 802.3af & IEEE802.3at & IEEE802.3at++
- LT PoE (48VDC) normal/high power PoE
- 90W performance
- IN: 1x Gigabit POE IN TP socket
- OUT: 1x Gigabit TP-socket data out
- 1x 10-25V switchable output voltage
- 2x USB 2.0 up to 2A per Port
- 1x power cable



Art.-Nr. 99300

ALL048701 SPLITTER-MINI/EXTRACTOR LT-POE

- Mixed IEEE 802.3af & IEEE802.3at & IEEE802.3at++
- LT PoE (48VDC) Normal/High-Power PoE 60 W
- IN: 1xPOE IN TP-socket
- OUT: 1xTP socket data out
- 1x 5-14V switchable output voltage
- Mounting plate for wall assembly



Art.-Nr. 113243

REPEATER

ALL048600POE REPEATER 90W EXTENDS DATA AND POWER BY MAX. 100M

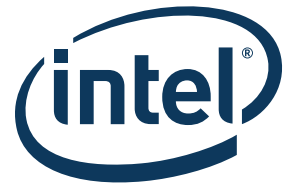
- 2x Gigabit Ethernet ports PoE (data and power)
- LT PoE++, IEEE802.3 at+/at/af
- Up to 6 repeaters cascable
- No need for an own power supply



Art.-Nr. 102328



1 / 10 GIGABIT PCI SERVER-CARDS

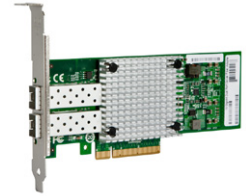


The ALLNET network cards are based on the current Intel chip set and enable comfortability and ensure compatibility and reliability. These advantages are provided by the ALLNET 1/10GB cards at a good price-performance ratio.

ALL0131-2SFP+-10G

PCI-E 10G X8 DUAL SFP+ FIBER NIC SERVER ADAPTER

Art.-Nr. 103585



ALL0135-2-10G-TX

PCI-E 10G X8/16 DUAL PORT NETWORK CARD- COPPER RJ45

Art.-Nr. 105889



ALL0134-1-10G-TX

PCI-E 10G X8/16 SINGLE PORT NETWORK CARD- COPPER RJ45

Art.-Nr. 105888



ALL0133-2-GB-TX

PCI-E 1G X4 DUAL PORT GIGABIT SERVER ADAPTER- COPPER RJ45

Art.-Nr. 103890



ALL0132-4-GB-TX

PCI-E 1G X4 QUAD PORT GIGABIT SERVER ADAPTER- COPPER RJ45

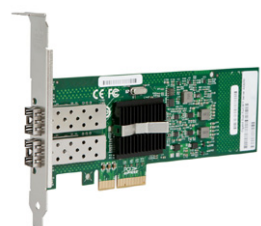
Art.-Nr. 103583



ALL0130-2SFP

PCI-E 1G X4/8 DUAL SFP FIBER CARD SERVER ADAPTER
-LC FIBER OPTIC(EF)- ALL0130-2SFP

Art.-Nr. 103584



FAST & GIGABIT ETHERNET

ALL8056A SWITCH UNMANAGED 5 PORT FAST ETHERNET

- 10/100MBPS half /full duplex
- Auto MDI/MDI-X
- Fanless
- 128KB buffer memory
- 1K MAC store
- Plastic housing with magnetic base for easy assembling
- Dimensions: 145x70x20mm



Art.-Nr. 893

ALL8089 SWITCH UNMANAGED 8 PORT FAST ETHERNET

- 10/100MBPS half /full duplex
- Fanless
- 256KB buffer memory
- 1K MAC store
- Plastic housing with magnetic base
- Suitable for wall assembly
- Dimensions: 185x75x20mm



Art.-Nr. 1803

ALL8089VOIP SWITCH UNMANAGED 8 PORT FAST ETHERNET

- 10/100MBPS half /full duplex
- Fanless
- 256KB buffer memory
- 1K MAC-Speicher
- Plastic housing with magnetic base
- Suitable for wall assembly
- 4 Port QoS Quality of Service
- Dimensions: 185x75x20mm



Art.-Nr. 35905

ALL8445v3 SWITCH UNMANAGED 5 PORT GIGABIT

- 10/100MBPS half /full duplex
- Fanless design
- 8K MAC store
- Metal housing
- Flow control
- Dimensions: 171x98x28mm



Art.-Nr. 85267



ALL8898 SWITCH UNMANAGED 8 PORT GIGABIT

- 10/100MBPS half / full duplex
- Fanless Design
- 1024KB buffer memory
- 16K jumbo frame
- Metal housing (mini design)
- Internal power supply



Art.-Nr. 82314

ALL-SG8208M SWITCH SMART MANAGED 8 PORT GIGABIT

- Webmanagement
- 8K MAC address store with 8 groups
- VLAN Table
- Port mirroring
- QoS-Quality of Services port based/ tag based/ DSCP prioritization
- 10k jumbo frame
- 8K buffer store



Art.-Nr. 112533

ALL-SG8316M SWITCH SMART MANAGED 16 PORT GIGABIT

- 16 port Gigabit managed switch
- 8K MAC store
- 10K jumbo frame
- 64 Static VLAN
- Port based VLAN
- Tagged based VLAN
- Spanning tree
- IGMP snooping
- QoS, storm control
- IPv6, IEEE 802.3az „Energy Saving“
- Cable diagnostics



Art.-Nr. 112534

ALL-SG8324M SWITCH SMART MANAGED 24 PORT GIGABIT

- 24 port Gigabit Managed Switch
- 8K MAC store
- 10K jumbo frame
- 64 Static VLAN
- Port Based VLAN
- Tagged based VLAN
- Spanning tree
- IGMP snooping
- QoS, storm control
- IPv6, IEEE 802.3az „Energy Saving“
- Cable diagnostics



Art.-Nr. 113771

FAST & GIGABIT ETHERNET

ALL4804W SWITCH SMART MANAGED 16 PORT GIGABIT

- 16 ports Gigabit
- Full duplex mode
- Desktop switch
- 8K MAC store & 340KB buffer store
- Auto uplink
- Layer 2, web managed
- 19" metal housing
- Store and forward switching



Art.-Nr. 61360

ALL4806W REV. B SWITCH SMART MANAGED 24 PORT GIGABIT

- Web based management
- 24x Gigabit TX ports + 4x mini GBIC slots full duplex & half duplex
- Port-Mirroring & Port-Trunking
- Support 8K absolute MAC address
- 500KByte RAM
- Jumbo frames: 9.6KB
- Port based / tag based VLAN
- QoS-Quality of Service
- 16 groups VLAN tagging
- 802.1x port based
- IGMP snooping
- Fanless design incl. 19" angles



Art.-Nr. 111582

ALL4750 SFP(MINI GBIC), SX/LC MODUL 1G 550M

- ALLNET/ D-Link/ ZyXEL/ Enterasys/Lancom
- LC connector, 1.125G 850 nm multimode
- SFP
- 550m range



Art.-Nr. 27947

ALL4750-DDMI SFP(MINI GBIC), 1G 550M

- For ALLNET/D-Link/ZyXEL/Enterasys/Lancom
- LC connector 1.125G 850 nm multimode
- SFP & DDMI data interface
- 550m range



Art.-Nr. 114291

ALL4751 SFP(MINI GBIC), LX/LC MODUL 1G 10KM

- for ALLNET/ D-Link/ ZyXEL/ Enterasys/Lancom
- LC connector, 1.125G 1310nm singlemode
- SFP
- 10km range



Art.-Nr. 59426

ALL4751-DDMI SFP (MINI GBIC), LX/LC MODUL 1G 10KM

- for ALLNET/D-Link/ZyXEL/Enterasys/Lancom
- LC connector 1.125G 1310nm singlemode
- SFP & DDMI data interface
- 10km range



Art.-Nr. 114293



ALL4752 SFP(MINI GBIC), 1G 20KM

- for ALLNET/D-Link/Lancom/Zyxel
- LC connector 1.125G 1310nm 3,3V singlemode
- SFP
- 20km range



Art.-Nr. 114334

ALL4752-DDMI SFP(MINI GBIC), 1G 20KM

- for ALLNET/D-Link/Lancom/Zyxel
- LC connector 1.125G 1310nm 3,3V Singlemode
- SFP & DDMI data connector
- 20km range



Art.-Nr. 114289

ALL4753 SFP(MINI GBIC), LHX/LC MODUL 1G 40KM

- 3Com / Cisco / ALLNET / D-Link
- LC connector 1.125G 1310nm 3,3V singlemode
- SFP
- 40km range



Art.-Nr. 59391

ALL4753-DDMI SFP(MINI GBIC), 1G 40KM

- for ALLNET/D-Link/Lancom/Zyxel
- LC connector 1.125G 1310nm 3,3V singlemode
- SFP & DDMI data interface
- 40km range



Art.-Nr. 114283

ALL4755 SFP(MINI GBIC), ZX/LC MODUL 1G 70-80KM

- for 3Com / Cisco / ALLNET / D-Link
- LC-Anschl 1.125G 1550nm 3,3V singlemode
- SFP
- 70-80km range



Art.-Nr. 59393

ALL4757 SFP+(MINI GBIC), SR/LC 10G MODUL MAX. 300M

- for Cisco / ALLNET / D-Link / Lancom
- LC connector
- SFP+(mini Gbic)
- Multimode 850nm



Art.-Nr. 101189

ALL4758 SFP+(MINI GBIC), LR/LC 10G MODUL MAX.10KM

- for 3Com / Cisco / ALLNET / D-Link
- LC connector
- SFP+(mini Gbic)
- Only for single mode cables
- Wavelength 1310nm



Art.-Nr. 101190

ALL-VPN10 VPN ROUTER WITH W-LAN

- 1~2x 100MBPS WAN ports for load balancing
- 3~4x 100MBPS switch LAN Ports, 2x USB ports
- Up to 10 IPSec VPN tunnels, 100MBPS VPN throughput
- Up to 5 simultaneous PPTP VPN connections
- Up to 10 IPSec VPN tunnels



Art.-Nr. 104312

ALL-VPN20 VPN / FIREWALL DUAL-WAN

- 2x 100MBPS WAN ports for load balancing
- 4x 100MBPS switch LAN ports
- Up to 10 IPSec VPN connections at the same time
- Provides up to 10 PPTP VPN connections



Art.-Nr. 95194

ADSL ANNEX B / J MODEM

ALL0333CJ REV.C ADSL / ADSL2+ MODEM

- 2MB flash
- 8MB SDRAM G.992.3(ADSL2)
- G.992.5(ADSL2+)
- RE-ADSL compliant
- AnnexB & AnnexJ
- Up to 26MBPS download
- RJ-45 connection for LAN
- LED display



Art.-Nr. 98791

VDSL2 BRIDGE-MODEM MIT VECTORING

ALL-BM100VDSL2V

- Bridge modem for ADSL2, ADSL2+, VDSL, VDSL2 in Annex B & J / vectoring
- Connection via twisted two-wire cable, performance up to 100MBPS
- Supports DPBO (downstream power back off)
- VDSL2 vectoring compatible up to 100MBPS connection
- ADSL downward compatible



Art.-Nr. 120183



VDSL2 ANNEX B BRIDGE / MODEM

ALL126AS3 VECTORING COMPATIBEL

- VDSL2 slave modem with integrated quadruple 10/100MBPS switch
- Connection via twisted two-wire cable, performance up to 100MBPS
- Max. connection length: ca. 2,5km - depends on type of cable
- Supports DPBO (downstream power back off)
- Can be configured as VDSL2 modem for Telekom VDSL connection and vectoring
- Supports ADSL2(+)
- Integrated POTS splitter



Art.-Nr. 103889

ALL126AS2 VDSL MODEM MIT SPLITTER

- VDSL2 slave modem with integrated quadruple 10/100MBPS switch
- Connection via twisted two-wire cable, performance up to 100MBPS
- Maximum connection length up to 2.5km - depends on type of cable
- Supports DPBO (downstream power back off)
- Can be configured as VDSL2 modem for Telekom VDSL connection and vectoring
- Integrated POTS splitter



Art.-Nr. 63906

ADSL ANNEX B/J ROUTER / MODEM

ALL-WR0500AC VDSL2 WIRELESS ROUTER MIT VECTORING

- Broad band modem router for ADSL2, ADSL2+, VDSL, VDSL2 in Annex B & J
- Integrated WLAN AP with 300MBPS (IEEE802.11b/g/n/ac) dual band
- Encryption WEP 64/128
- WPA/WPA2
- WPS
- Quadruple 10/100MBPS switch
- L2TP
- PPTP
- IPSec
- Telephone connection for SIP-Provider

Can be used as client of the master DSLAM ALL126AM2 & ALL1268M.



Art.-Nr. 115064

3G/4G ROUTER 3-IN-1

ALL-WR2901-4G 4G POCKET ROUTER WITH WIFI AP / POWERBANK & LAN INTERFACE

- LTE 4G mobile router with integrated battery „powerbank“ 5200mAh for charging mobile devices
- LTE band 800/1800/2600Mhz
- 3G = 850/900/1900/2100Mhz, 2G= 900/1800/1900
- Integrated wireless AP by IEEE802.11 b/g/n 1T1R max. 10 connections to wifi mobile devices
- LTE Qualcomm 9600 module with max. 100MBPS download and 50MBPS upload
- SIM interface
- 1x RJ45 100MBPS interface
- Dimensions: 110x72x22mm



Art.-Nr. 113022

3G/4G ANTENNAS

GSM-ANTENNA 2,4DBI 4G OMNIDIRECTIONAL ANTENNA OMNI-A0121

- Frequency band: 790-960, 1710-2170, 2500-2700MHz bands
- Weight: nominal 2,4dbi 360°
- Polarization: linear
- Connection: SMA-Male
- Cable length: 5M HDF195
- Dimensions: 600x85x60mm
- Assembly: wall/ mast assembly indoor/ outdoor IP65



Art.-Nr. 79122

GSM-ANTENNA 2,5DBI MIMO 4G OMNIDIRECTIONAL ANTENNA XPOL-A001

- Frequency band: 790-960, 1710-2170, 2300-2400, 2500-2700MHz bands
- Gain: nominal 2dbi, max. 2,5dbi
- Polarization: 2xLinear (vertical or horizontal)
- Connectors: 2x SMA-Male
- Cable length: 2x 5m HDF 195
- Assembly: wall/ window/ mast assembly indoor/ outdoor
- Dimensions: 234x134x84mm



Art.-Nr. 105303



GSM-ANTENNA 8DBI MIMO 4G FLAT-PATCH ANTENNA

- Frequency band: 650-960, 1710-2170, 2500-2700MHz bands
- Gain: Max. 8.3dbi
- Polarization: 2x linear vertically und horizontally
- Connector: SMA-Male
- Cable length: 5m HDF195
- Dimensions: 260x260x80mm
- Assembly: wall or mast assembly (60mm) indoor/ outdoor IP65



Art.-Nr. 98913

GSM-ANTENNA 11DBI YAGI/MAST LPDA-A0092

- Frequency band: 694-1000, 1500-3000MHz
- Gain: Nominal 11dbi
- Polarization: linear
- Conenctor: SMA-Male
- Cable length: 7m HDF 195
- Dimensions: 1100 x180x60mm
- Assembly: mast assembly (60mm) indoor/ outdoor IP65



Art.-Nr. 91566

3G/4G ANTENNA ACCESSORIES

GSM-ANTENNA 11DBI YAGI/MAST ZBH. HORIZONTAL

- It's required to use 2x LPDA-A0092 antennas with horizontal und vertical polarization for LTE
- Mast assembly for two antennas



Art.-Nr. 105297



MEDIA CONVERTERS

ALL-MC102-SC-MM MEDIA CONVERTER - 10/100MBPS - 100BASEFX MM, SC

- 1x 10/100BaseTX Ethernet TP port
- 1x 100BaseFX Ethernet fiber port
- TP port supports half/ full duplex
- Auto MDI/MDI-X and auto negotiation
- FX Fiber port supports multi mode
- Ethernet 802.3x flow control



Art.-Nr. 102458

ALL-MC103G-SC-MM MEDIA CONVERTER - 10/100/1000MBPS - 1000BASESX MM, SC

- 1x 10/100BaseTX Ethernet TP port
- 1x 1000BaseSX Ethernet fiber port
- TP port supports half/ full duplex
- Auto MDI/MDI-X and auto negotiation
- Gigabit fiber port supports multi mode
- Ethernet 802.3x flow control



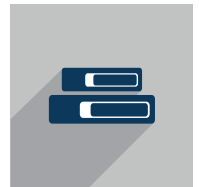
Art.-Nr. 102459

ALL-MC104G-SFP1 MEDIA CONVERTER - 10/100/1000MBPS - 1000BASESX/LX SFP

- 1x Gigabit BaseT Ethernet TP port
- 1x 1000BaseSX/LX SFP slot
- TP port supports half/ full duplex
- Auto MDI/MDI-X and auto negotiation
- SFP slot supports multi or single mode SFP (mini GBIC) modules
- Ethernet 802.3x flow control



Art.-Nr. 102460



ALL-MC105G-SC-SM MEDIA CONVERTER - 10/100/1000MBPS - 1000BASELX SM, SC

- 1x Gigabit BaseT Ethernet TP port
- 1x 1000BaseLX Ethernet fiber port
- TP port supports half/ full duplex
- Auto MDI/MDI-X and auto negotiation
- Gigabit fiber port supports single mode SC
- Ethernet 802.3x flow control



Art.-Nr. 103897

ALL-MCS014 19" HOUSING FOR UP TO 14 MEDIA CONVERTERS

- 19" chassis for assembling up to 14 media converters „except of MC115VDSL“
- Inclusive redundant power supply



Art.-Nr. 102465

USB DEVICE SERVER

ALL0804W USB DEVICE SERVER 4 PORT

- 4x USB 2.0 Port
- 1x LAN, Wireless N 802.11n (1T1R) 150MBPS
- Access to up to 4 USB devices via network per software client
- Client software available for Windows desktop operation system & MAC



Art.-Nr. 88445



ALLNET GmbH Computersysteme
Maistrasse 2, 82110 Germering
Tel. +49 (0)89 894 222 - 22 • Fax +49 (0)89 894 222 - 33
Email: sales@allnet.de • www.allnet.de

Errors and omissions excepted. März 2K15.