



# ALL-PI2011BP-60W Industrial PoE Injector 60W

- 60 Watts, selectable Mode A and Mode B
- Industrial Gigabit POE Injector with voltage booster
- accept 24 VDC to boost up voltage to 55V for 60Watts application
- 1x10/100/1000M TX PSE (802.3af/at POE+) TX
- 1x10/100/1000M TX, Operating temp: -40°C to +75°C

## Introduction

This Super Voltage Booster --- 60 Watts, high power Single port industrial POE Injector is equipped with our high efficiency ColdDesign technology which allows low input voltage, such as 24/48/56 VDC be boost up to 55VDC to provide 60Watts to 72 Watts power to your security equipment by a 4-pin selectable dip switch. The ColdDesign technology will not only boost up Input Voltage, also reduce the excessive heat problem to a minimum. It accepts the input voltage as low as 24/48 VDC to boost up to 55V to meet IEEE802.3af/at required voltage. This built-in 4 pin dip switches are able to select POE for Mode B or Mode A, to select standard IEEE802.3at 30Watts or high power 36Watts, and to select 2 pair or 4 pair for 30/36Watts or 60/72Watts power output. It is being rigorously tested for your Security, Transportation and Telco application.

Art.-Nr. 134036

Errors and technical changes that serve the interests of progress or development of the product are reserved.

[www.allnet.de](http://www.allnet.de)



## Specification

IEEE Standard	IEEE 802.3 10Base-T Ethernet
	IEEE 802.3u 100Base-TX Fast Ethernet
	IEEE 802.3ab 1000Base-T Gigabit Ethernet
	IEEE802.3af for POE
	IEEE802.3at for POE+
Network Connector :	1xRJ-45 10/100/1000BaseT(X) Data
	1xRJ-45 10/100/1000BaseT(X) PSE with POE Output power
Network Cable	UTP/STP Cat.5e or above Cable
	EIA/TIA-568 10-ohm (100m)
Protocol	CSMA/CD
LED	PW1(power 1) Green: ON- power good, OFF-power failed
	PW2(power 2) Green: ON- power good, OFF-power failed
	Mode A : ON- End Span PD detected
	Mode B: ON – Mid Span PD detected
	4 Pair: ON – 60W PSE in active mode. OFF – 30W PSE in active mode.
POE Pin Assignment	Default: Mode A (End Span) V+, V+, V-, V- for pin 1, 2, 3, 6
	DIP switch setting can be changed to Mode B, V+, V+, V-, V- for pin 4, 5, 7, 8
DIP Switch	To select 2 pair (30/36Watts) or 4 pair (60/72Watts)
	To select Mode A, or Mode B
	To select standard IEEE802.3at 30watts or high power POE 36Watts
Reverse polarity protection	Present
Overload current protection	Present
Power Supply	2 Redundant power source
	24V-56V VDC Power Input,
Power Consumption	1 W@24/48 VDC full load, Without POE
POE power	Maximum POE power 72watts at 24/48VDC input

**Part.-No. 134036**

Errors and technical changes that serve the interests of progress or development of the product are reserved.

[www.allnet.de](http://www.allnet.de)



## Specification

Removable Terminal Block	Provide 4 pin terminal block
	Wire range: 0.34mm <sup>2</sup> to 2.5mm <sup>2</sup>
	Solid wire (AWG):12-24/14-22
	Stranded wire(AWG): 12-24/14-22
	Torque:5lb-In/0.5Nm/0.56Nm
	Wire Strip length: 7-8mm
Operating Temperature	-40°~75° C fully tested.
Operating Humidity	5% to 95% (Non-condensing)
Storage Temperature	-40°~85° C
MTBF (mean time between failure)	510,304 hrs ( MIL-HDBK-217F) at 25°C
Housing	Rugged Metal, IP30 Protection
Case Dimension (L X W X D)mm	103.5mmx32mmx81.5mm (LxWxD)
Installation mounting	DIN Rail mounting and Wall Mounting
EN55022/24	ITE equipment
EN55011	Industrial, Scientific and Medical (ISM) equipment
Safety	IEC EN60950-1
EMC/EMS	CE, FCC, VCCI
EMI	FCC Part 15 Subpart B Class A,
	CE EN 55022 Class A
EN 50155 / EN 60068-2-6	Vibration
EN 50155 / EN 60068-2-27	Shock
EN 50155 / EN 60068-2-32	Free Fall

**Part.-No. 134036**

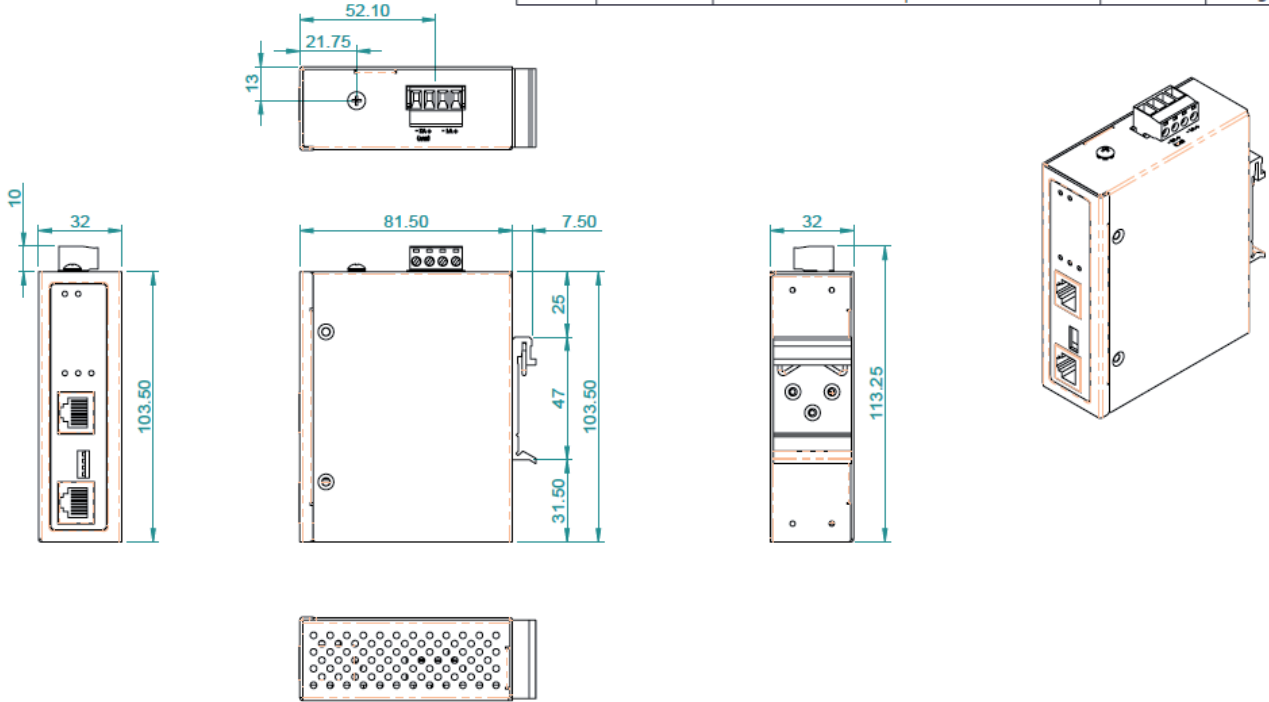
Errors and technical changes that serve the interests of progress or development of the product are reserved.

[www.allnet.de](http://www.allnet.de)



## Housing Dimension

Zone	Mark	Description	Date	Sign
------	------	-------------	------	------



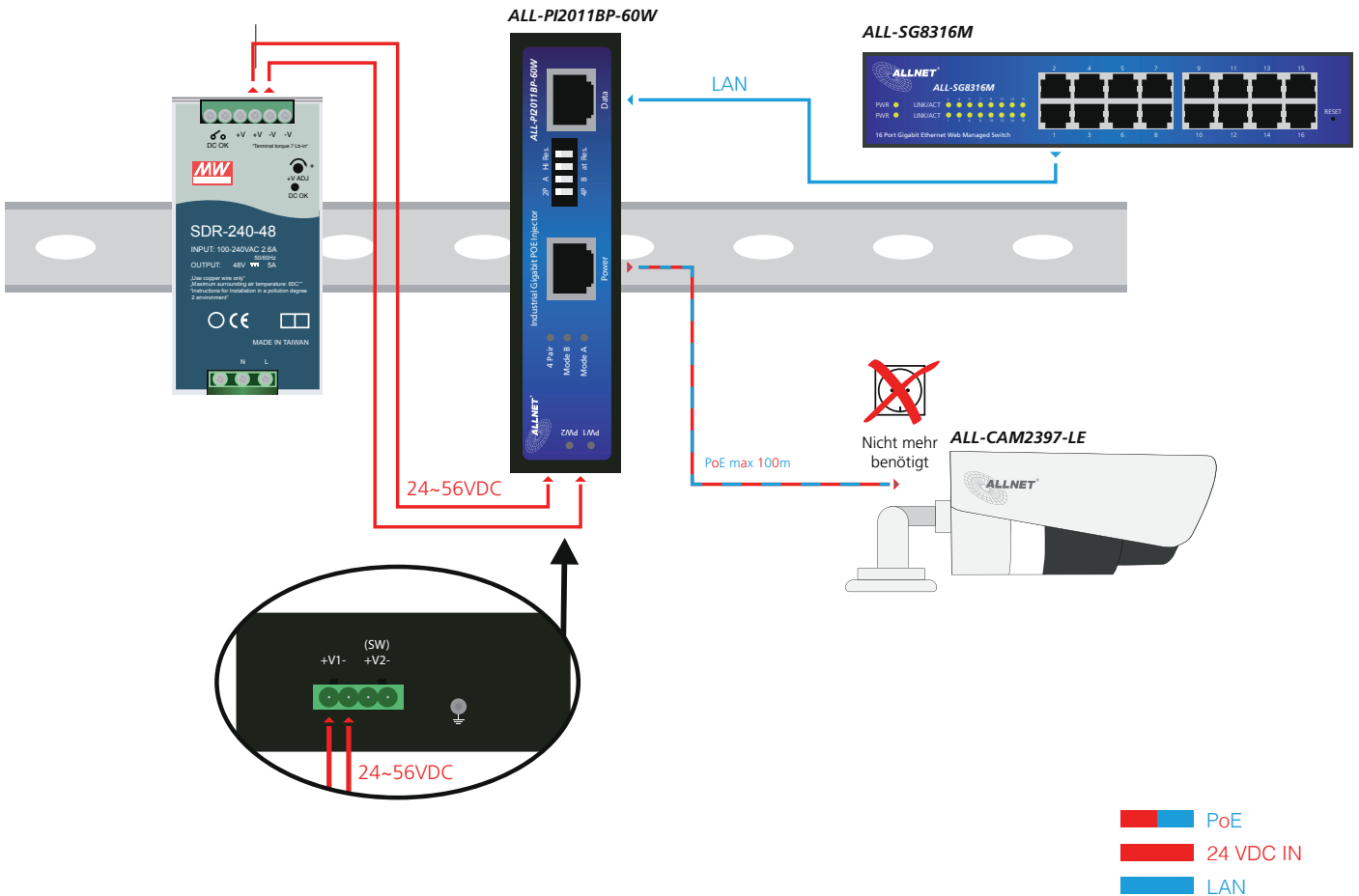
Part.-No. 134036

Errors and technical changes that serve the interests of progress or development of the product are reserved.

[www.allnet.de](http://www.allnet.de)



Installation diagram:



Part.-No. 134036

Errors and technical changes that serve the interests of progress or development of the product are reserved.

[www.allnet.de](http://www.allnet.de)