

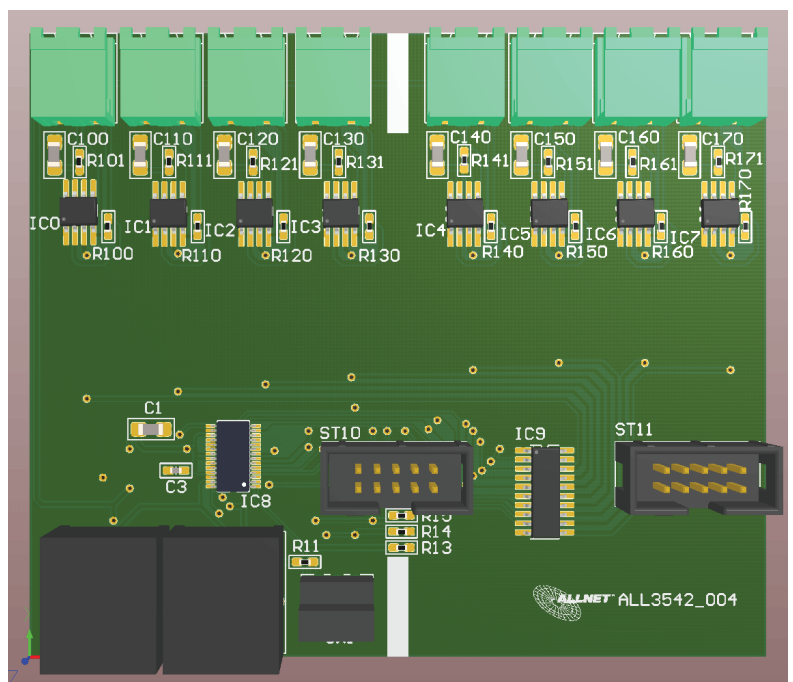
ALLNET ALL3542

8-Port contact input for DIN rail

- compatible to ALL3418v2/3500/4500/5000
- 8-port contact input module for DIN rail mounting 107 mm
- Connection of up to eight (potential-free) contacts
- Open contacts are counted as „1“, closed as „0“ - ideal for quiescent current loops (door contacts) with pulse stretching

NOT COMPATIBLE TO ALL3000/4000 & ALL4001

Power is supplied via the sensor cable,
no power adapter required



Art.-Nr. 106665