



ALLNET **5" RGB LCD Display Module**

Das LCD Display können Sie schnell und einfach über den RGB Connector an den Banana Pi anbinden. Mit einer Auflösung von 800x480 Pixeln bietet das Display eine perfekte Auflösung und lässt sich durch das sehr geringe Gewicht flexibel und portabel einsetzen.

Artikel: 114689



Produkt Details:

LCD Größe:
5" (Diagonale)

Anschluss:
Parallel RGB

Auflösung:
800 x 480px

Treiber Technologie:
a-Si TFT active matrix

DOT Pitch
0,045 x 0,135mm (B/H)

Anbindung an Banana Pi:
40 Pin FOC Stecker für Display Sensor Interface (DSI)

Display:
Glanz

Farb Anordnung:
RGB

Ansicht-richtung:
6 = 0´Clock

Stromversorgung:
5V/400mA

Sichtbarer Bereich:
108,0 x 64,8mm (B/H)

Abmessungen
118,5 x 77,55 x 3,1mm (B/H/T)



Innovation Enriches Your Life.

LeMaker Team -- The Professional Makers for Hardware and Software Customization.

Banana Pi

5 inch LCD MODULE

SPECIFICATION

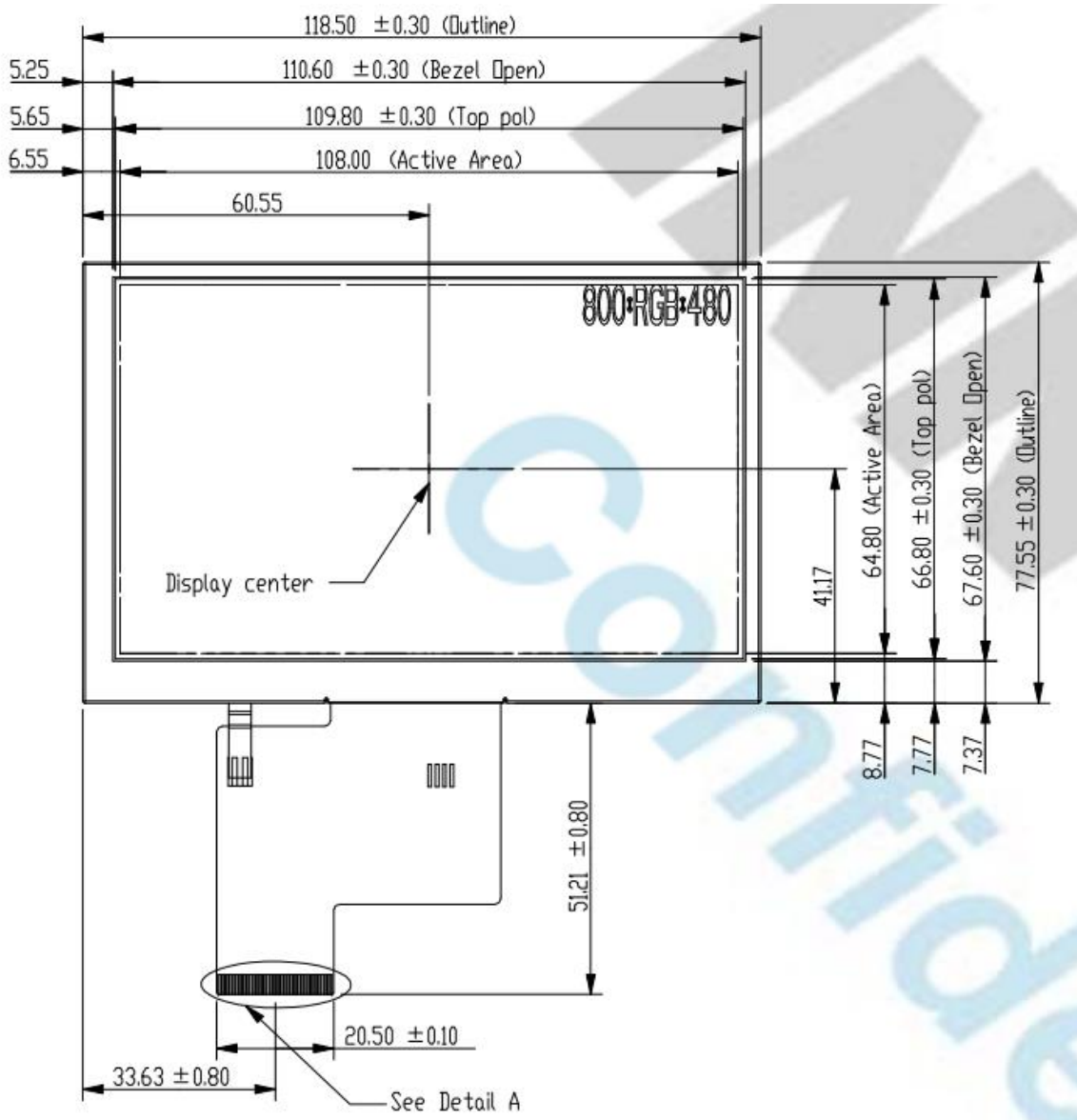
V1.0

By Tony

www.lemaker.org

1. Product Picture

2. Mechanical Drawing



3. General Specifications

➤ Electrical Specifications

Item	Specification	Remark
Power	5V(Typ.)	
Current	400mA(Typ.)	
Interface	Parallel RGB	

➤ LCD Specifications

Item	Specification	Remark
LCD size	5.0 inch(Diagonal)	
Driver element	a-Si TFT active matrix	
Resolution	800 × 3(RGB) × 480	
Display mode	Normally White, Transmissive	
Dot pitch	0.045(W) × 0.135(H) mm	
Active area	108.0(W) × 64.8(H) mm	
Module size	118.5(W) × 77.55(H) × 3.1(D) mm	Note 1
Surface treatment	Glare	
Color arrangement	RGB-stripe	
View direction(Gray Inversion)	6 O' Clock	
Backlight power consumption	TBDW(Typ.)	
Panel power consumption	TBD	
Weight	TBD	

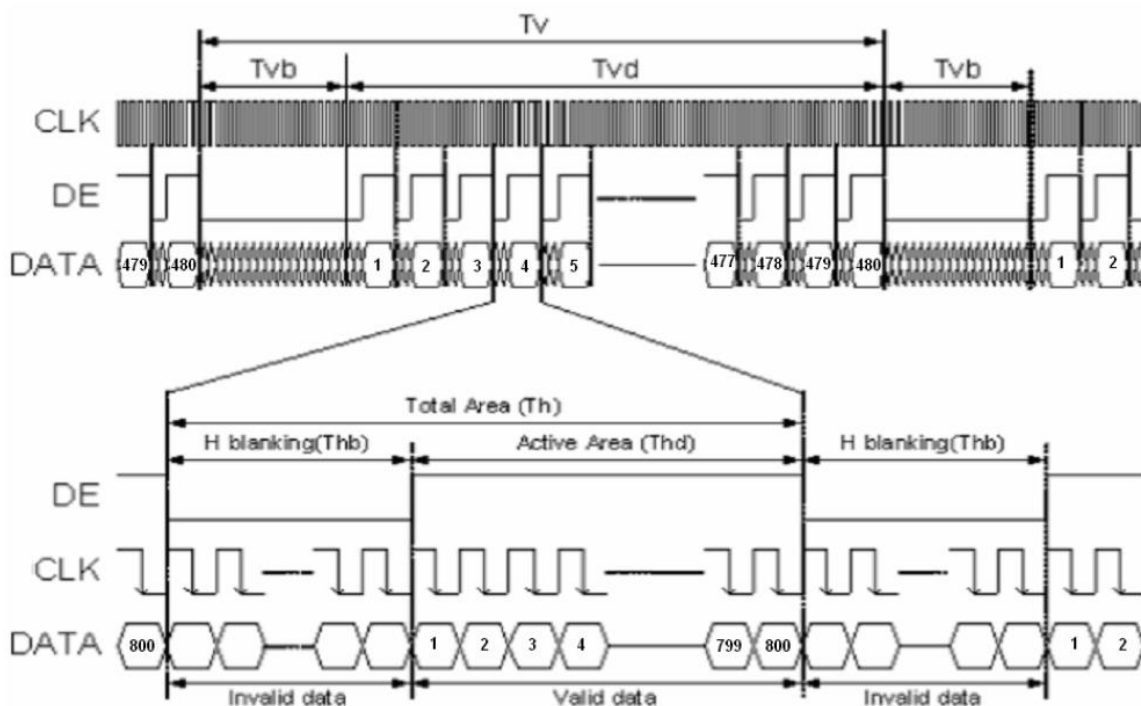
Note 1: Refer to Mechanical Drawing.

4. Timing Characteristics

➤ Timing Conditions

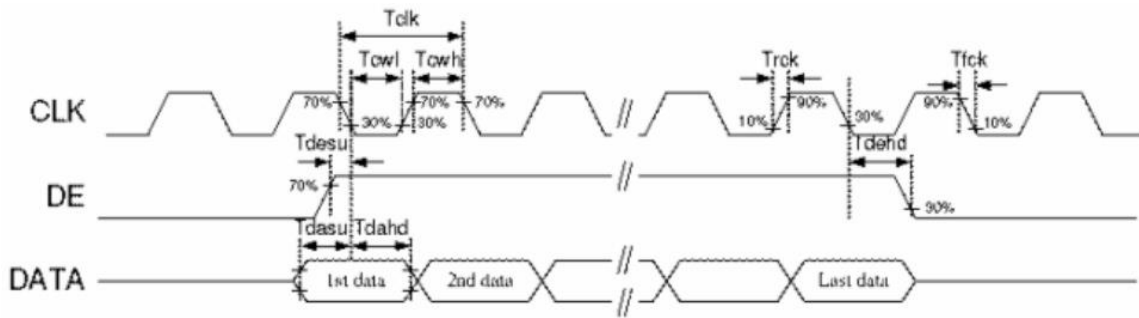
Parameter	Symbol	Values			Unit	Remark
		Min.	Typ.	Max.		
Clock frequency	FCLK	26.4	33.3	46.8	MHz	
DEV period time	Tv	510	525	650	H	
DEV display area	Tvd	480			H	
DEV blanking	Tvb	30	45	170	H	
DEH period time	Th	862	1056	1200	CLK	
DEH display area	Thd	800			CLK	
DEH blanking	Thb	62	256	400	CLK	
CLK cycle time	Tclk	21.3	30	37.8	ns	
Clock width of high level	Tcwh	40	50	60	%	
Clock width of low level	Tcwl	40	50	60	%	
Clock rising time	Trck	8	-	-	ns	
Clock falling time	Tfck	8	-	-	ns	
Data Setup Time	Tdasu	8	-	-	ns	
Data Hold Time	Tdahd	8	-	-	ns	
DE Setup Time	Tdesu	8	-	-	ns	
DE Hold Time	Tdehd	8	-	-	ns	

➤ Timing Diagram



Innovation Enriches Your Life.

LeMaker Team -- The Professional Makers for Hardware and Software Customization.



www.lemaker.org



Innovation Enriches Your Life.

LeMaker Team -- The Professional Makers for Hardware and Software Customization.

5. Optical Specifications

Item	Symbol	Condition	Values			Unit	Remark
			Min.	Typ.	Max.		
Viewing angle (CR≥10)	θL	Φ=180°(9 o' clock)	60	70	-	degree	
	θR	Φ=0°(3 o' clock)	60	70	-		
	θT	Φ=90°(12 o' clock)	40	50	-		
	θB	Φ=270°(6 o' clock)	60	70	-		
Response time	TON	Normal θ=Φ=0°	-	10	20	msec	
	TOFF		-	15	30	msec	
Contrast ratio	CR		400	500	-	-	
Color chromaticity	WX		0.26	0.31	0.36	-	
	WY		0.28	0.33	0.38	-	
Luminance	L		280	350	-	cd/m ²	
Luminance uniformity	YU		70	75	-	%	



www.lemaker.org